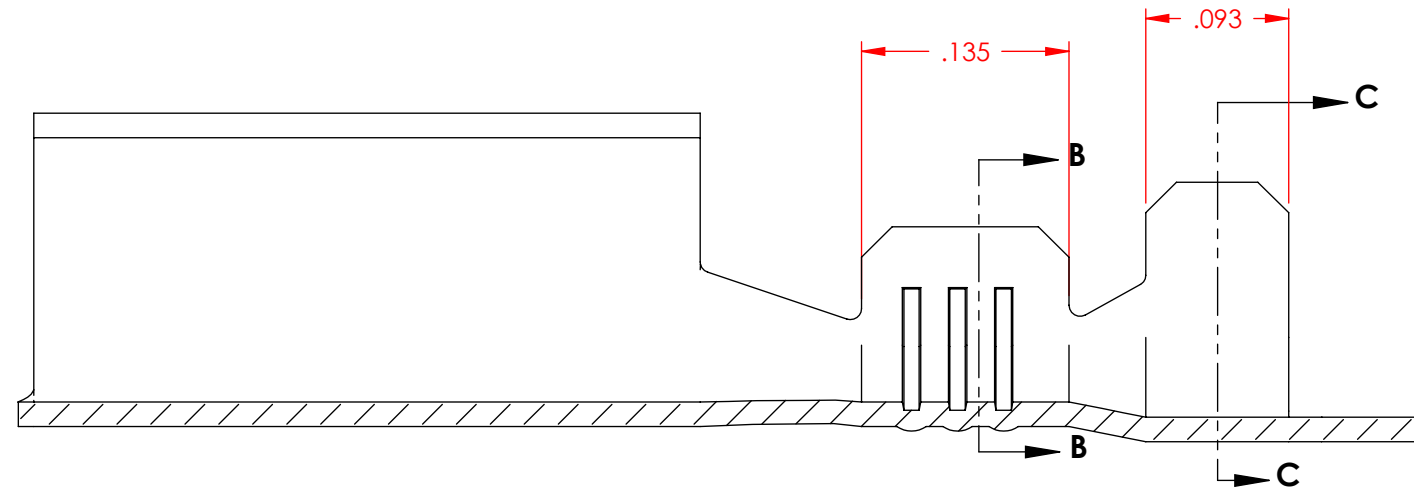
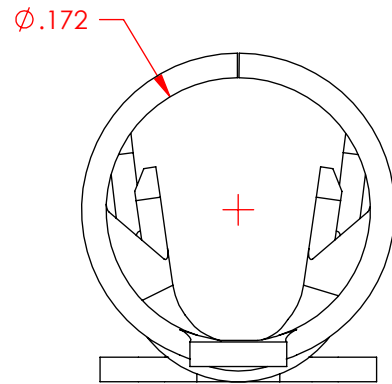
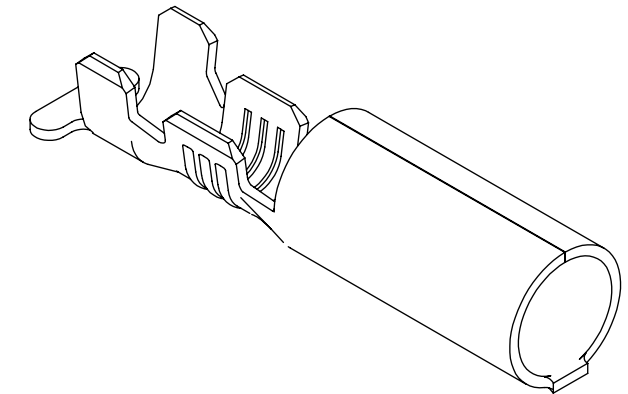
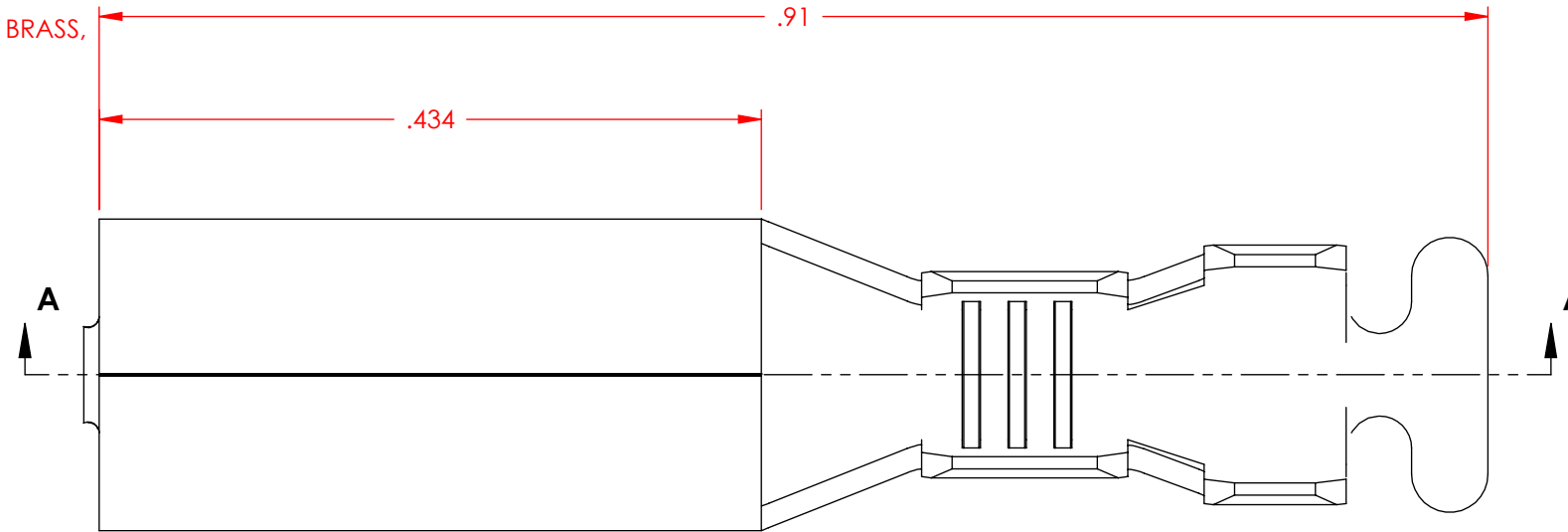


NOTE:

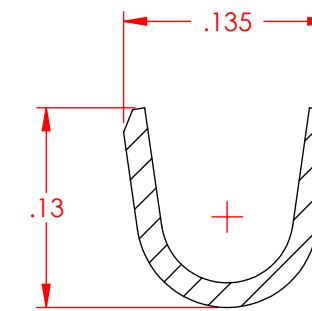
- 1.) MAT'L: .016 THK., BRASS, #8 TEMPER (SPRING HARD), PER ETCO METAL CODE NO. 00195.
- 2.) MAT'L: .016 THK., PRE-TINNED BRASS, #4 TEMPER (FULL HARD), PER ETCO METAL CODE NO. 01269.
- 3.) MAT'L: .016 THK., RICH LOW BRASS, #8 TEMPER (SPRING HARD), PER ETCO METAL CODE NO. 02181.
- 4.) MAT'L: .016 THK., PRE-TINNED RICH LOW BRASS, #8 TEMPER (SPRING HARD), PER ETCO METAL CODE NO. 02430.
- 5.) PARTS MAY BE COATED WITH A LIGHT FILM OF LUBRICATION USED IN THE MANUFACTURING PROCESS.
- 6.) WIRE RANGE: 20-16 AWG.
- 7.) INSUL RANGE: ϕ .090-.125
- 8.) TO ACCEPT A ϕ .180 PIN TERMINAL.

P/C	DESCRIPTION	MAT'L
09385	RE180-A-HB#8	NOTE 1
09387	RE180-A-TRL	NOTE 4
09390	RE180-A-THB	NOTE 2
09394	RE180-A-RL	NOTE 3

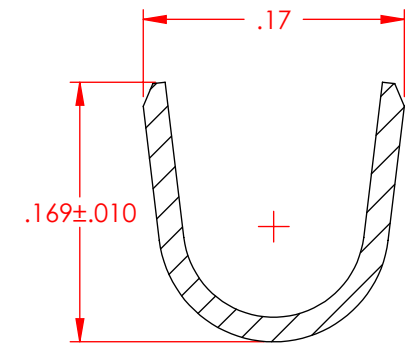
Rev.	Description of Change/ SCN#	Date
2	REDRAWN ON SOLIDWORKS NO CHANGES SCJ ORG.ENG.DWG.DATE: 11-19-69	6-17-05
3	ADDED P/Cs SCN#140162 SCJ	9-12-07



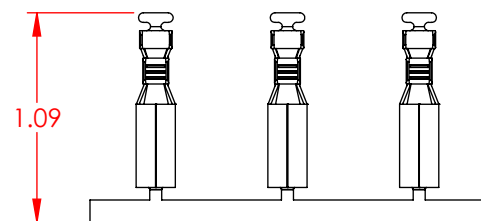
SECTION A-A
SCALE 8 : 1



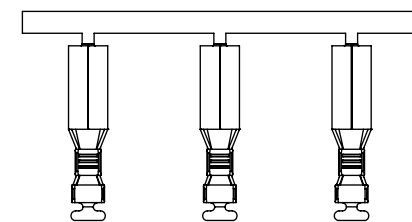
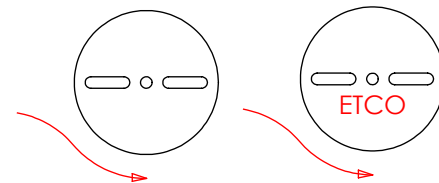
SECTION B-B
SCALE 8 : 1



SECTION C-C
SCALE 8 : 1



DIRECTION EXITING TOOL,
EARS UP, CARRIER TO THE FRONT



DIRECTION TOWARD APPLICATOR,
EARS UP, CARRIER TO THE BACK

UNCONTROLLED COPY

THIRD ANGLE PROJECTION
TOLERANCES UNLESS OTHERWISE SPECIFIED
INCHES: .XX - \pm .030
.XXX - \pm .015
ANGLES: \pm 5°

TOOL NO.
0649



Title:

ϕ .180 RECEPTACLE

DO NOT SCALE DWG.

Drawn By: S.JOHNSON

Date: 6-15-05

ETCO Incorporated
Engineered Products
25 Bellows Street
Warwick, RI 02888
Phone: (401) 467-2400
Fax: (401) 467-9230
www.ETCO.com

Chk'd/App'd By:

Scale:
8X

Size
B

Dwg. No.:

RE180-A cust