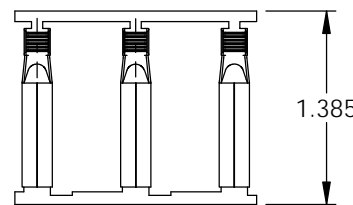
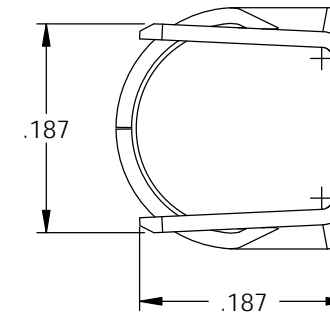
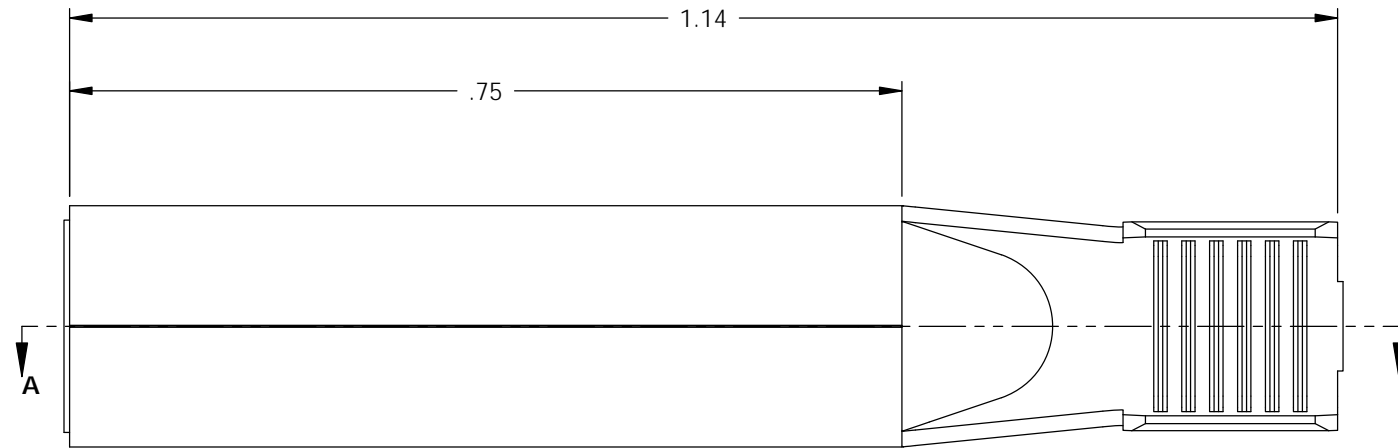
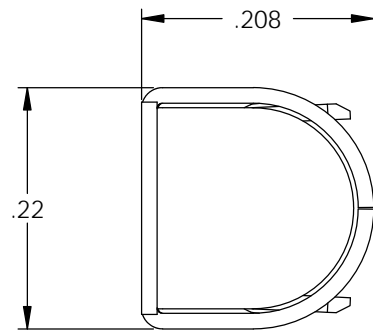
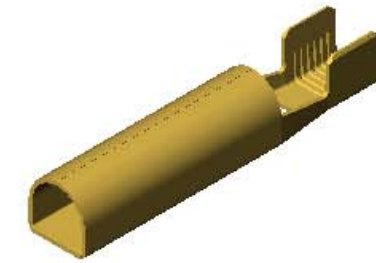
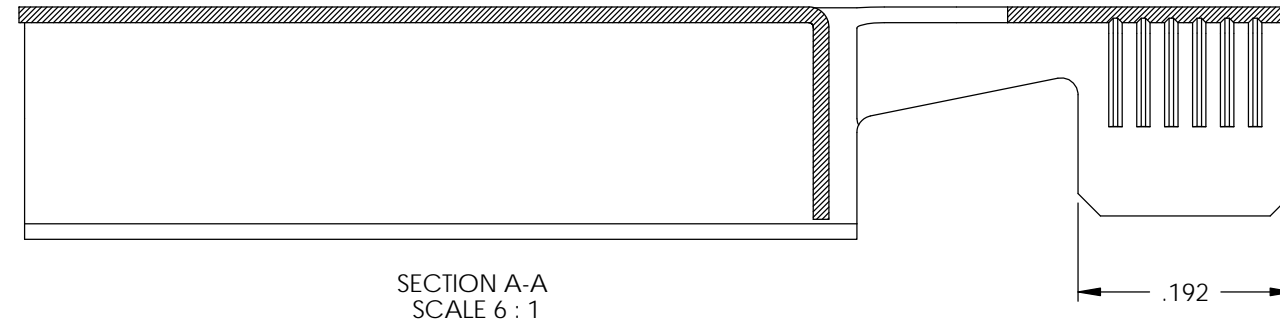


NOTES:

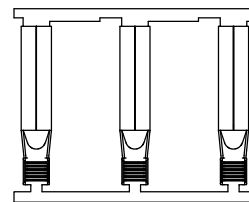
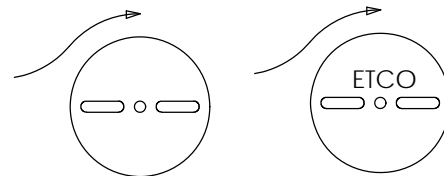
1. MATERIAL: .014 THICK C26000 BRASS
1/2 HARD, ANNEALED TO TEMPER,
PER ETCO METAL CODE 00059.
2. PARTS MAY BE COATED WITH A LIGHT FILM OF LUBRICATION
USED IN THE MANUFACTURING PROCESS.
3. WIRE RANGE: #10-#12 AWG.
4. TO ACCEPT A ϕ .187 PIN.

P/C	DESCRIPTION (2)	MAT'L
14023	RED187F10-B-HB	NOTE 1

Rev.	Description of Change/ SCN#	Date
1	TRANSFERED FROM CP SCJ	8-19-08
2	ECR# 816 SCJ	11-4-11



DIRECTION EXITING TOOL
EARS UP, TO THE BACK



DIRECTION TOWARDS APPLICATOR
EARS UP, TO THE FRONT

UNCONTROLLED COPY

<p>THIRD ANGLE PROJECTION TOLERANCES UNLESS OTHERWISE SPECIFIED INCHES: .XX - \pm.030 .XXX - \pm.015 ANGLES: \pm5°</p>	<p>TOOL NO. 0818</p>	<p>Title: FEMALE RECEPTACLE</p>		
		<p>DO NOT SCALE DWG.</p>	<p>Drawn By: S.JOHNSON</p>	<p>Date: 8-19-08</p>
<p>ETCO Incorporated Engineered Products 25 Bellows Street Warwick, RI 02888 Phone: (401) 467-2400 Fax: (401) 467-9230 www.ETCO.com</p>		<p>Chk'd/App'd By:</p>	<p>Scale: 6X</p>	<p>Size B</p>
<p>Dwg. No.: RED187F10 cust</p>				