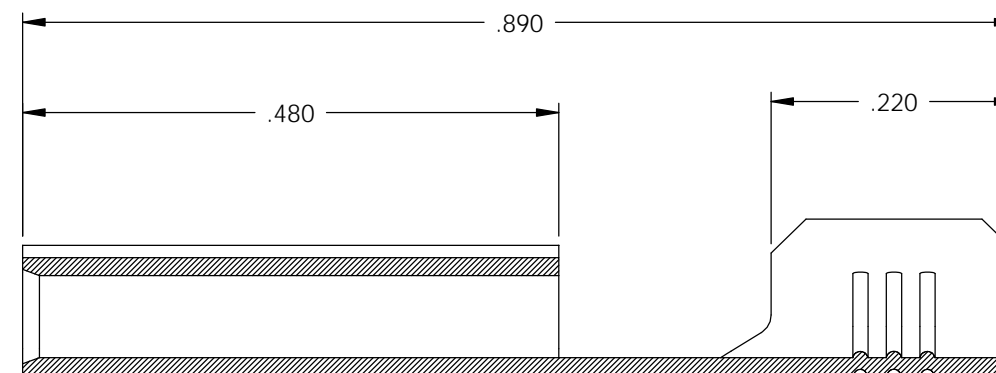
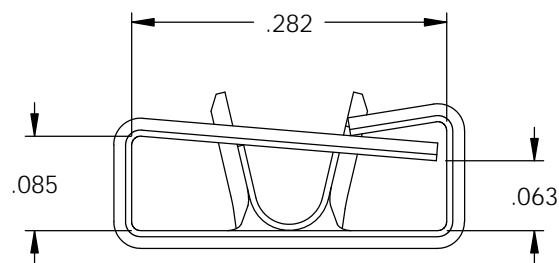
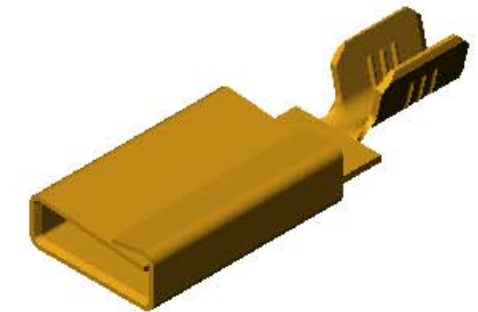
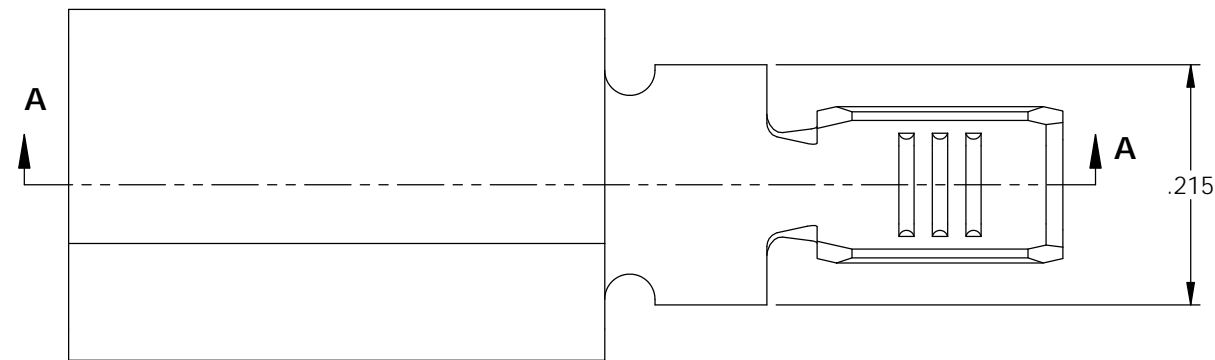


NOTES:

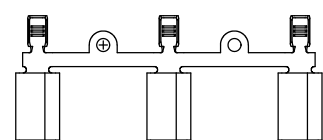
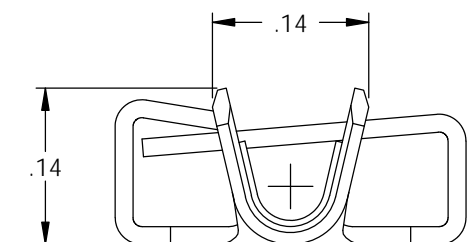
- MATERIAL: .016 THICK C26000 BRASS
1/2 HARD, ANNEALED TO TEMPER,
PER ETCO METAL CODE 00198.
- MATERIAL: .016 THICK C51000 PHOSPHOR BRONZE
1/2 HARD, PER ETCO METAL CODE 05354
- TO MATE WITH A IEC-C20 PIN
- WIRE RANGE: #14-#18 AWG
- RETENTION FORCES ARE INDICATED ON THE QUALITY INSPECTION PLAN.

P/C	DESCRIPTION (2)	MAT'L
14026	CF977-11-C-HB	NOTE 1
14211	CF977-11-C-PB	NOTE 2

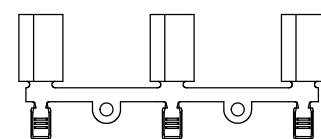
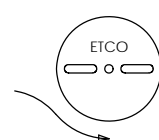
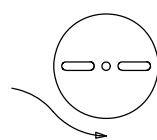
Rev.	Description of Change/ SCN#	Date
1	TRANSFERED FROM CP SCJ	8-6-08
2	ECR# 816 SCJ	11-4-11



SECTION A-A
SCALE 6 : 1



DIRECTION EXITING TOOL
EARS UP, TO THE BACK



DIRECTION TOWARDS APPLICATOR
EARS UP, TO THE FRONT

UNCONTROLLED COPY

THIRD ANGLE PROJECTION TOLERANCES UNLESS OTHERWISE SPECIFIED INCHES: .XX - ±.030 .XXX - ±.015 ANGLES: ±5°		TOOL NO. 0821	Title: RECEPTACLE		
	DO NOT SCALE DWG.		Drawn By: S.JOHNSON	Date: 8-6-08	
	ETCO Incorporated Engineered Products 25 Bellows Street Warwick, RI 02888 Phone: (401) 467-2400 Fax: (401) 467-9230 www.ETCO.com		Chk'd/App'd By:	Scale: 6X Size: B	
			Dwg. No.: CF977-11 cust		