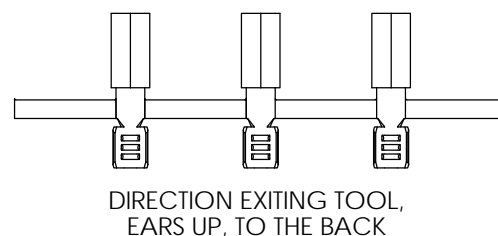
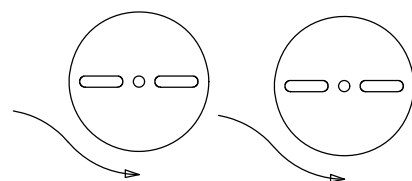
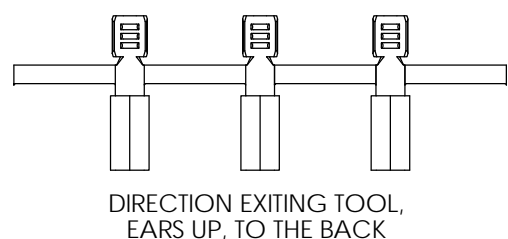
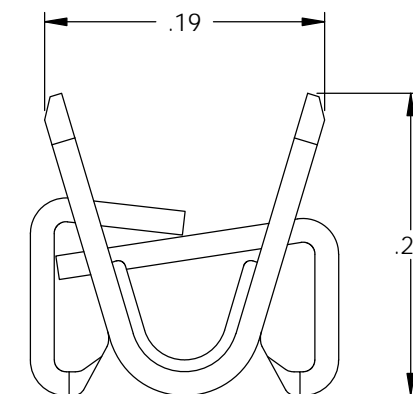
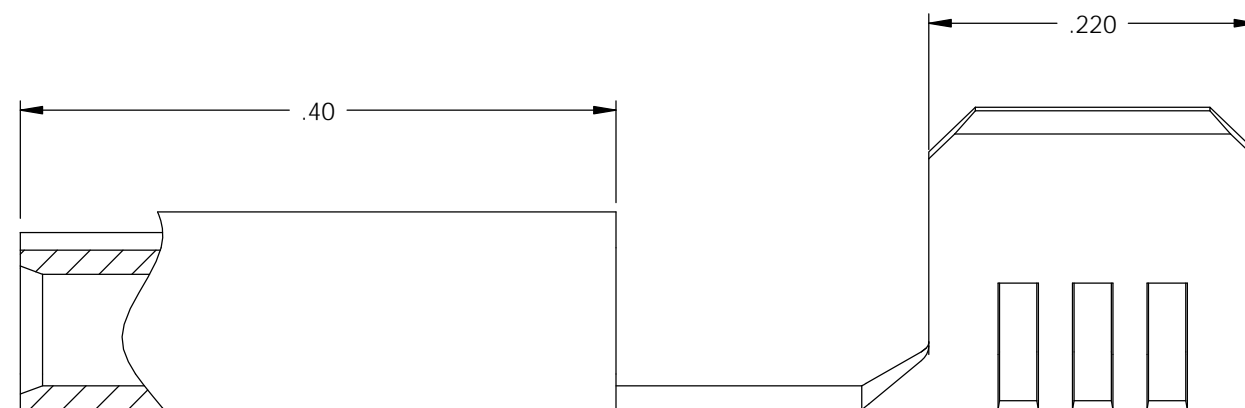
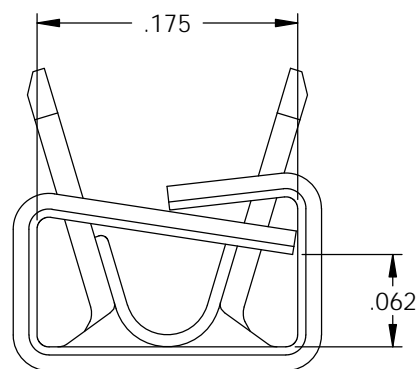
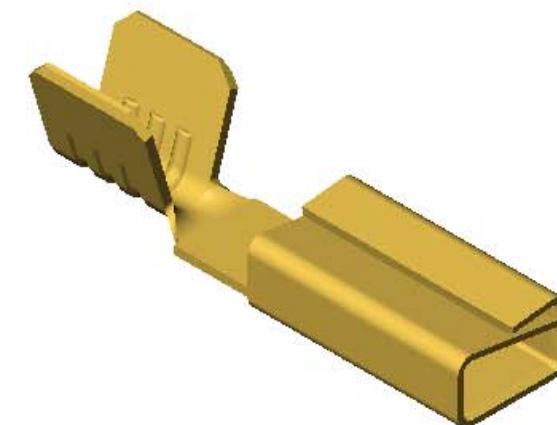
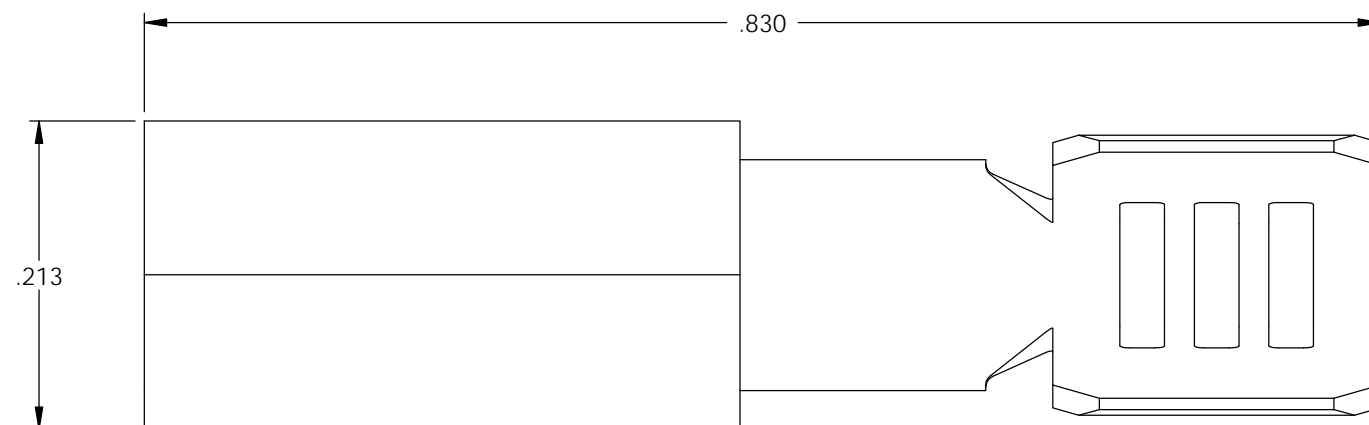


- NOTE:
 1.) MAT'L: .016 THK., BRASS,
 #2 TEMPER (HALF HARD), ANNEALED TO TEMPER,
 PER ETCO METAL CODE NO. 00171.
 2.) TO MATE WITH A IEC-C14 PIN.
 3.) RECEPTACLE RETENTION FORCES ARE INDICATED
 ON THE QUALITY INSPECTION PLAN.
 4.) WIRE RANGE: 10-12 AWG.

P/C	DESCRIPTION (2)	MAT'L
14084	CF977-12-C-HB	NOTE 1
14124	CF977-5-C-HB	NOTE 1

Rev.	Description of Change/ SCN#	Date
1	REDRAWN ON SOLIDWORKS NO CHANGES SCJ	1-15-04
2	ECR# 816 SCJ	11-7-11



THIS PRINT IS THE PROPERTY OF ETCO INCORPORATED. NO PART OF THIS DESIGN MAY BE USED IN ANY WAY WITHOUT WRITTEN CONSENT FROM ETCO INCORPORATED.

UNCONTROLLED COPY

THIRD ANGLE PROJECTION		TOOL NO. 0808		Title: RECEPTACLE	
TOLERANCES UNLESS OTHERWISE SPECIFIED		ETCO Incorporated Engineered Products 25 Bellows Street Warwick, R.I. 02888 Phone: (401)467-2400 FAX: (401)467-9230 www.ETCO.com		DO NOT SCALE DWG.	
INCHES: .XX - ±.030 .XXX - ±.015		Angles - ±5°		Drawn By: S. JOHNSON	
		ETCO		Date: 5-13-03	
				Chk'd/App'd By:	
				Scale: 8:1	
				Size B	
				Dwg. No.: CF977-5 & CF977-12	