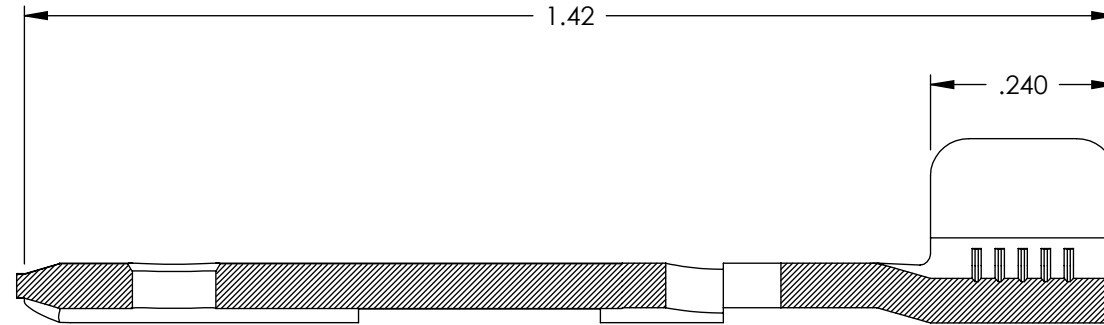
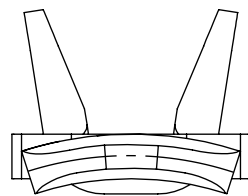
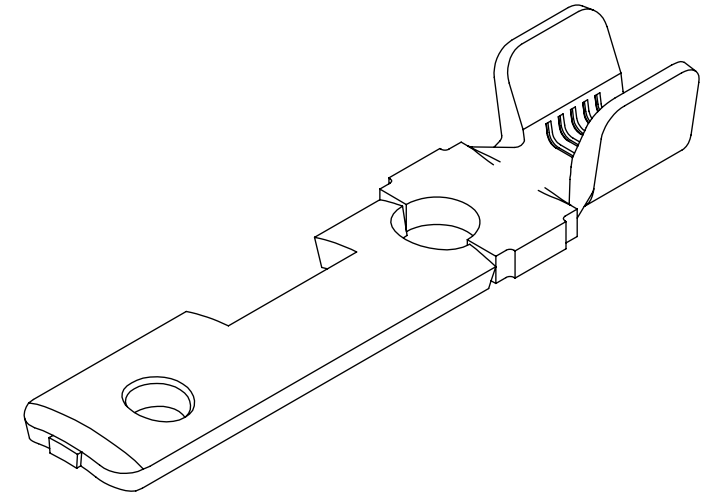
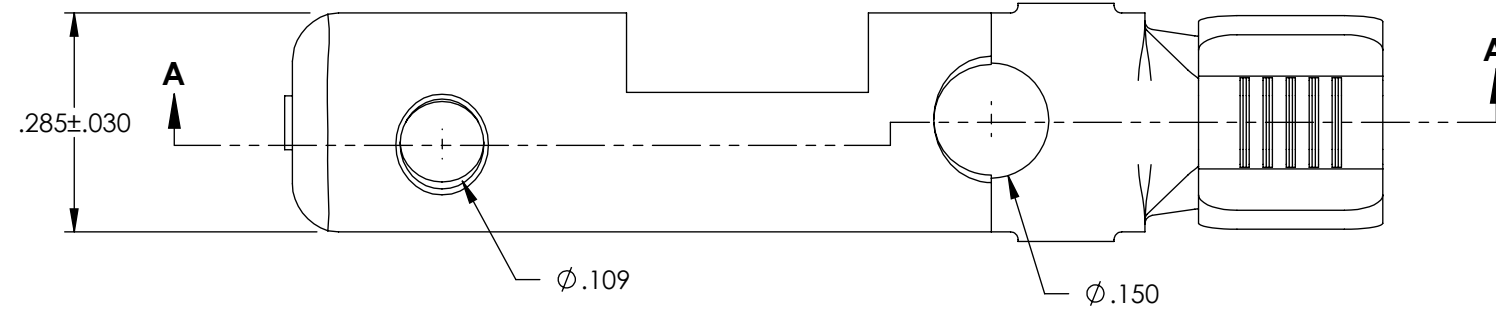


NOTES:

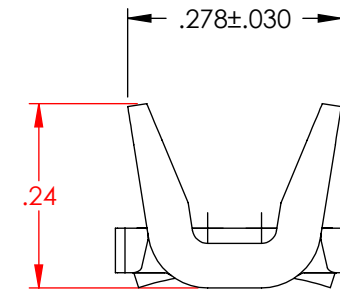
1. MATERIAL: .058 THICK C26000 BRASS; 1/4 HARD, ANNEALED TO TEMPER, PER ETCO METAL CODE 07028.
2. PARTS MAY BE COATED WITH A LIGHT FILM OF LUBRICATION USED IN THE MANUFACTURING PROCESS.
3. WIRE RANGE: #10-#16 AWG.
4. NEMA L5-20, 125 VOLTS-20 AMPS.

| P/C | DESCRIPTION | MAT'L | POST-PLATING |
|-------|------------------|--------|--------------|
| 82051 | MALETLNRW-HB | NOTE 1 | NONE |
| 82061 | MALETLNRW-HB-TAF | NOTE 1 | NOTE 2 |

| Rev. | Description of Change/ SCN# | Date |
|------|-----------------------------|--------|
| 1 | TRANSFERED FROM CP SCJ | 8-7-08 |



SECTION A-A



UNCONTROLLED COPY

| | | | | |
|---|---------------------------------|--|-----------------------------------|----------------------------|
| <p>THIRD ANGLE PROJECTION TOLERANCES UNLESS OTHERWISE SPECIFIED INCHES: .XX - ±.030 .XXX - ±.015 ANGLES: ±5°</p> | <p>TOOL NO. 0836</p> | <p>Title: MALE TWIST LOCK TERMINAL-NARROW: L5-20, 125 VOLTS-20 AMPS</p> | | |
| | | <p>DO NOT SCALE DWG.</p> | <p>Drawn By: S.JOHNSON</p> | <p>Date: 8-7-08</p> |
| <p>ETCO Incorporated Engineered Products 25 Bellows Street Warwick, RI 02888 Phone: (401) 467-2400 Fax: (401) 467-9230 www.ETCO.com</p> | | <p>Chk'd/App'd By:</p> | <p>Scale: 4X</p> | <p>Size B</p> |
| | | <p>Dwg. No.: MALETLNRW loose pc. cust</p> | | |