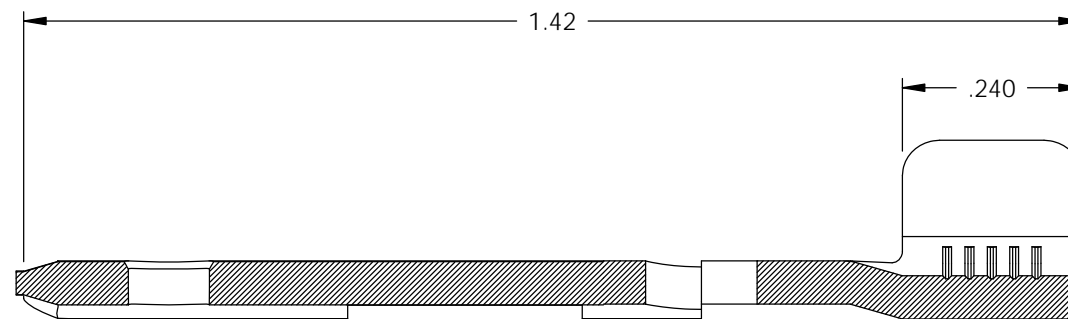
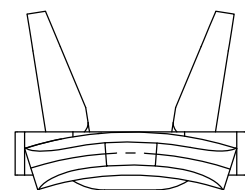
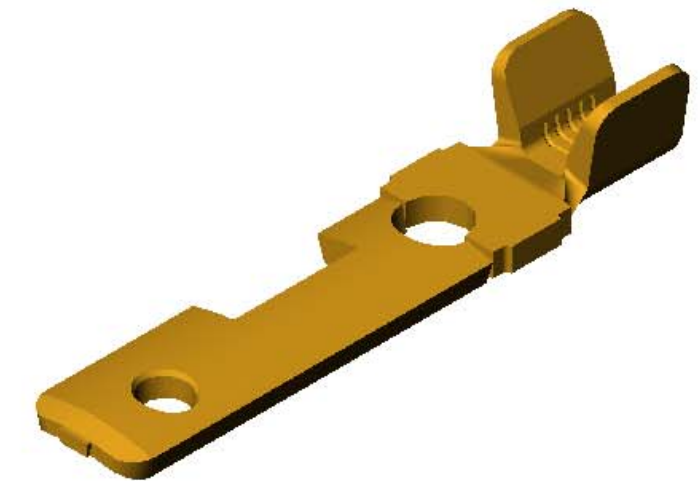
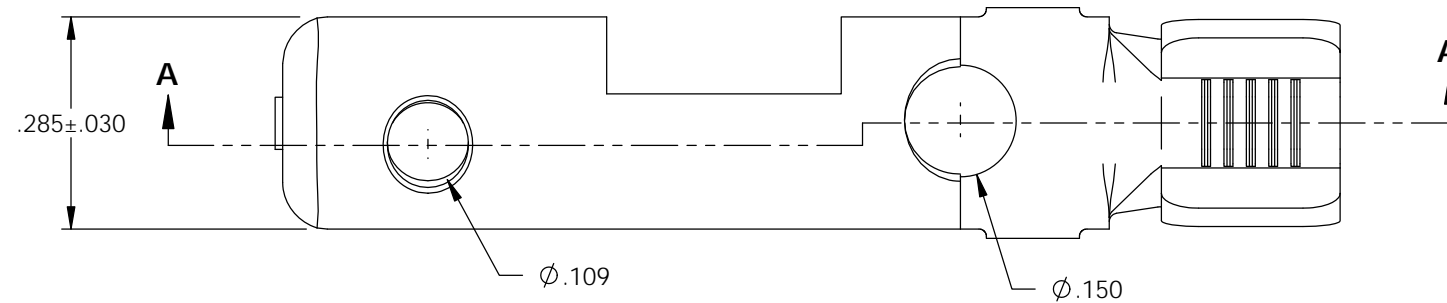


NOTES:

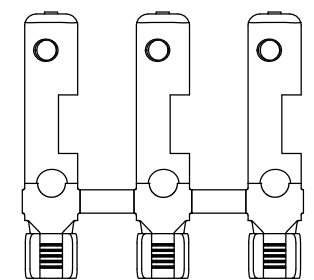
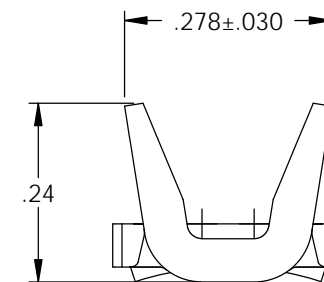
1. MATERIAL: .058 THICK C26000 BRASS; 1/4 HARD, ANNEALED TO TEMPER, PER ETCO METAL CODE 07028.
2. PARTS MAY BE COATED WITH A LIGHT FILM OF LUBRICATION USED IN THE MANUFACTURING PROCESS.
3. WIRE RANGE: #10-#16 AWG.
4. NEMA L5-20, 125 VOLTS-20 AMPS.

P/C	DESCRIPTION (5)	MAT'L
82064	MALETLNRW-C-HB	NOTE 1

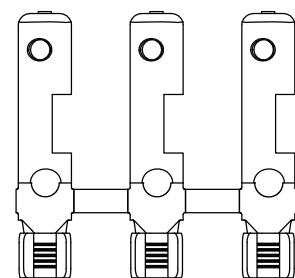
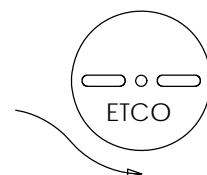
Rev.	Description of Change/ SCN#	Date
1	TRANSFER FROM CP TO EP	10-6-04
2	SCN# 102798 SCJ	1-3-05
3	SCN# 102831 SCJ	1-24-05
4	SCN# 102981 SCJ	5-24-05
5	ECR# 816 SCJ	11-3-11



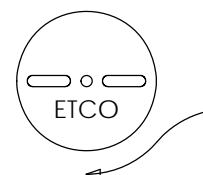
SECTION A-A



DIRECTION EXITING TOOL, EARS UP, TO THE FRONT



DIRECTION TOWRD APPLICATOR, FROM RIGHT, EARS UP, TO THE FRONT



UNCONTROLLED COPY

<p>THIRD ANGLE PROJECTION</p>	<p>TOOL NO.</p> <p>0836</p>	<p>Title: MALE TWIST LOCK TERMINAL-NARROW: L5-20, 125 VOLTS-20 AMPS</p>		
	<p>TOLERANCES UNLESS OTHERWISE SPECIFIED</p> <p>INCHES: .XX - ±.030 .XXX - ±.015</p> <p>ANGLES - ±5°</p>	<p>DO NOT SCALE DWG.</p>	<p>Drawn By: S.JOHNSON</p>	<p>Date: 10-6-04</p>
<p>ETCO</p>	<p>ETCO Incorporated Engineered Products 25 Bellows Street Warwick, R.I. 02888 Phone: (401)467-2400 FAX: (401)467-9230 www.ETCO.com</p>	<p>Chk'd/App'd By:</p>	<p>Scale: 4X</p>	<p>Size B</p>
		<p>Dwg. No.: MALETLNRW strip form</p>		