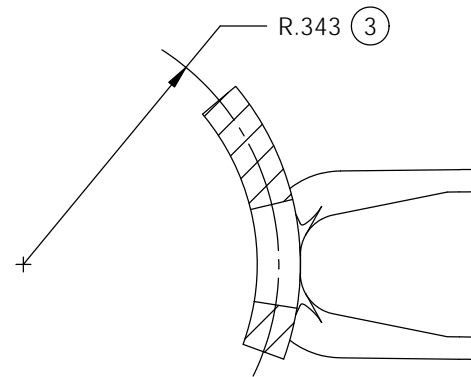
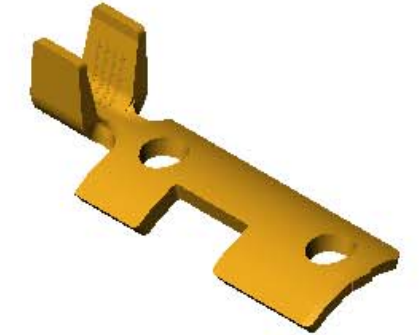


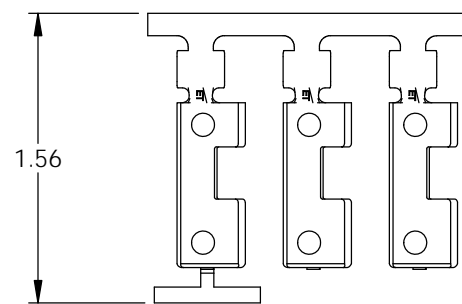
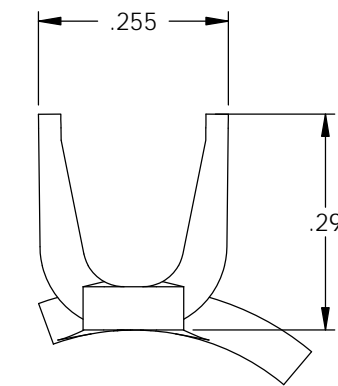
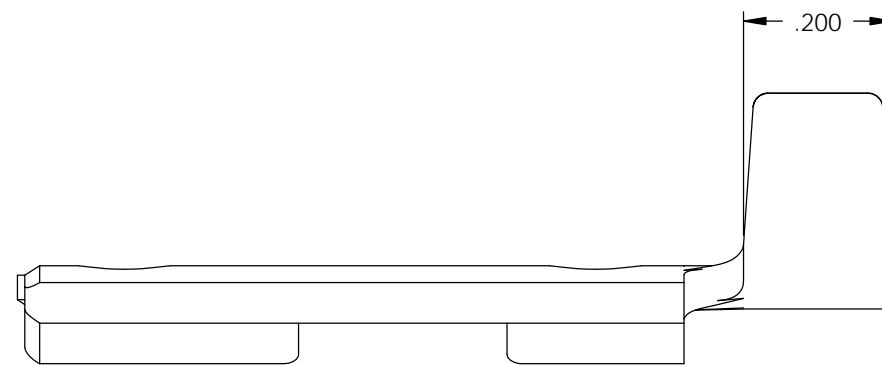
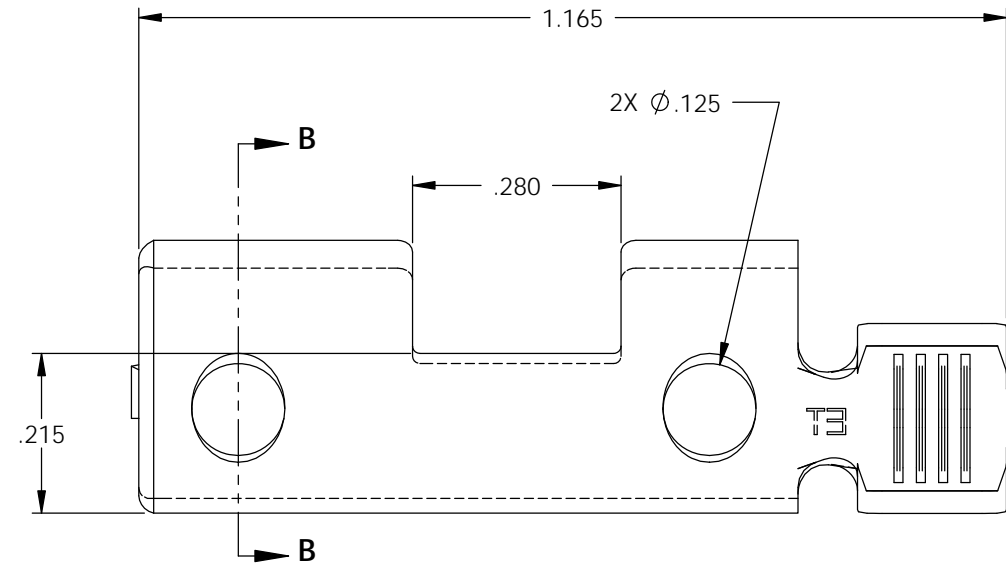
- NOTE:
- MAT'L: .058 THK., BRASS, #1 TEMPER (QUARTER HARD), ANNEALED TO TEMPER, PER ETCO METAL CODE NO. 01076.
 - PARTS MAY BE COATED WITH A LIGHT FILM OF LUBRICATION USED IN THE MANUFACTURING PROCESS.
 - WIRE RANGE: 10-16 AWG.
 - NEMA L5-15, 125 VOLTS-15 AMPS.
 - NEMA L6-15, 250 VOLTS-15 AMPS.
 - NEMA L7-15, 277 VOLTS-15 AMPS.

P/C	DESCRIPTION (4)	MAT'L
82081	MALETLLINE-D-HB	NOTE 1

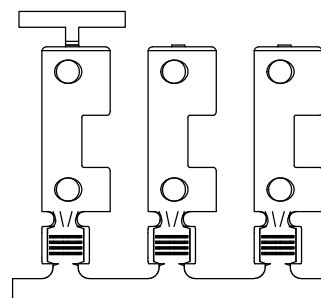
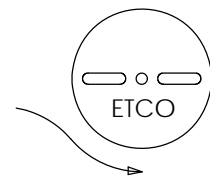
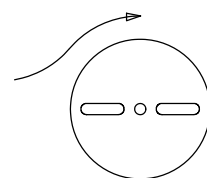
Rev.	Description of Change/ SCN#	Date
1	TRANSFER FROM CP TO EP	1-14-05
2	SCN# 102830 SCJ	1-24-05
3	ECR#533 JMR	12-07-10
4	ECR# 816 SCJ	11-3-11



SECTION B-B
SCALE 4 : 1



DIRECTION EXITING TOOL,
EARS DOWN, TO THE BACK



DIRECTION TOWARDS APPLICATOR,
EARS UP, TO THE FRONT

UNCONTROLLED COPY

 THIRD ANGLE PROJECTION	TOOL NO. 0847	Title: COMMON BLADE TWIST: 15 AMPS				
		DO NOT SCALE DWG.	Drawn By: S.JOHNSON	Date: 1-14-05		
TOLERANCES UNLESS OTHERWISE SPECIFIED INCHES: .XX - ±.030 .XXX - ±.015 ANGLES - ±5°	 ETCO	ETCO Incorporated Engineered Products 25 Bellows Street Warwick, R.I. 02888 Phone: (401)467-2400 FAX: (401)467-9230 www.ETCO.com		Chk'd/App'd By:	Scale: 4:1	Size B
		Dwg. No.:		MALETLLINE		