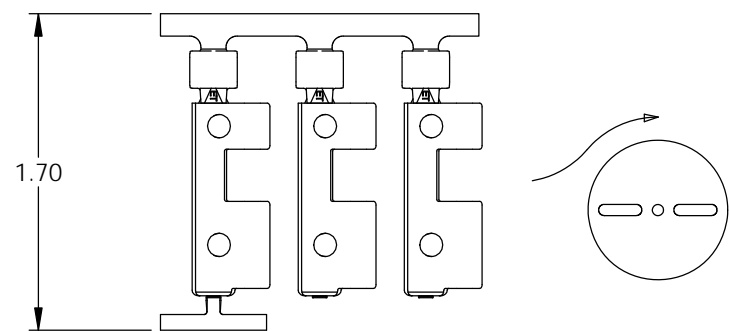
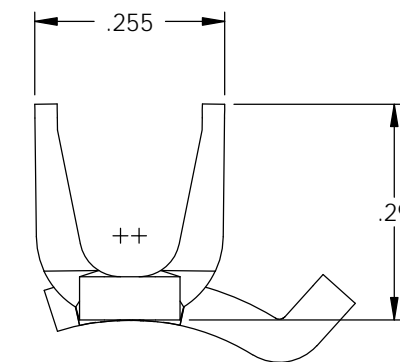
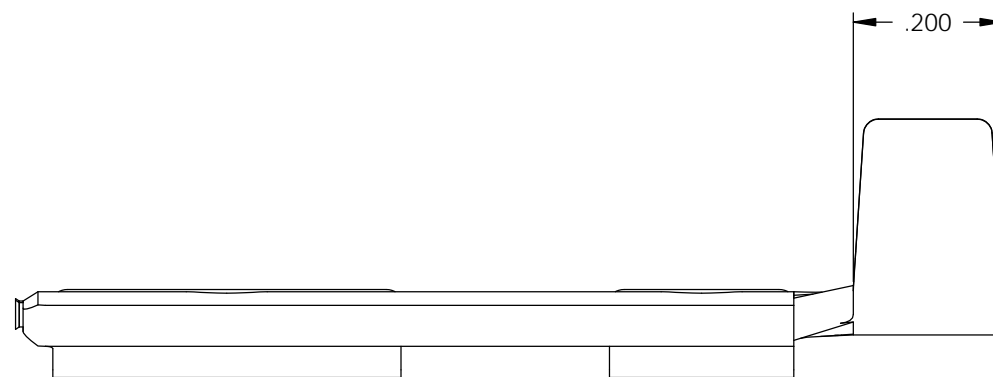
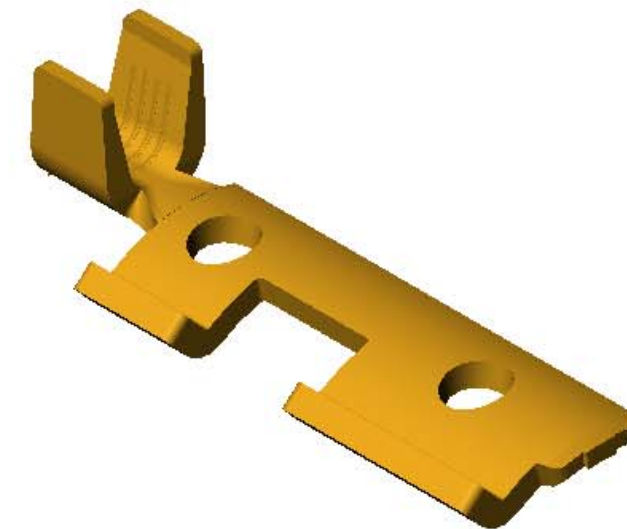
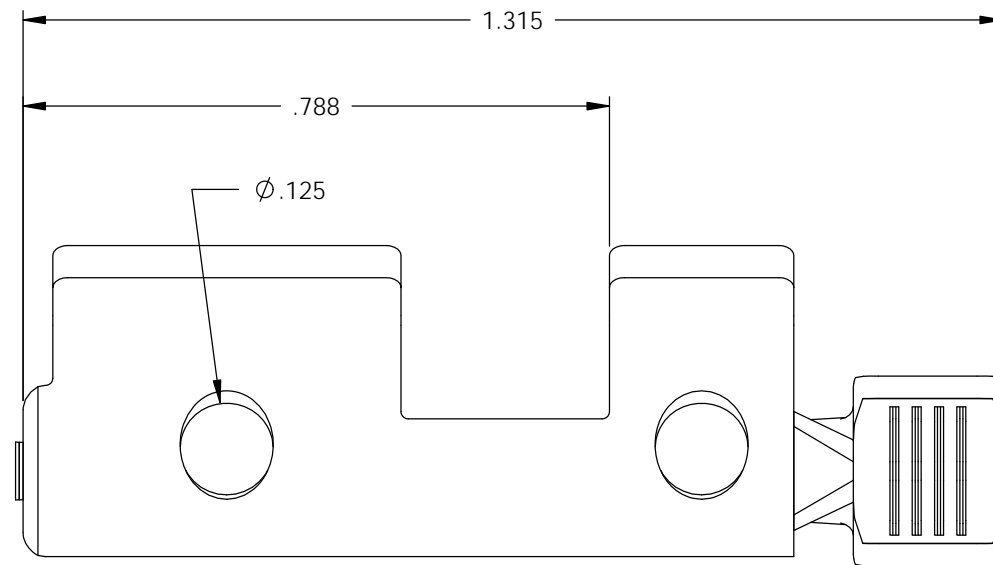
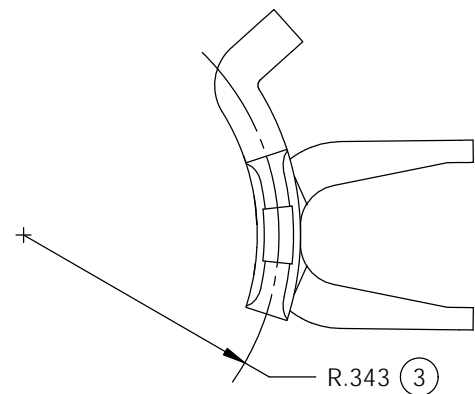


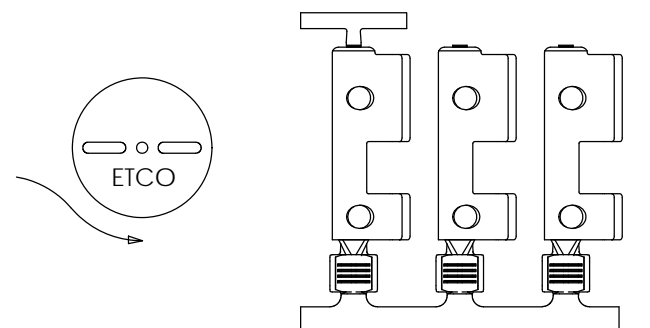
- NOTE:
 1.) MAT'L: .058 THK., BRASS,
 #1 TEMPER (QUARTER HARD), ANNEALED TO TEMPER,
 PER ETCO METAL CODE NO. 07025.
 2.) PARTS MAY BE COATED WITH A LIGHT
 FILM OF LUBRICATION USED IN THE
 MANUFACTURING PROCESS.
 3.) WIRE RANGE: 10-16 AWG.
 4.) NEMA L6-15, 250 VOLTS-15 AMPS.

P/C	DESCRIPTION (4)	MAT'L
82083	MALETLGRD-V3-D-HB	NOTE 1

Rev.	Description of Change/ SCN#	Date
1	TRANSFER FROM CP TO EP	1-18-05
2	SCN# 102830 SCJ	1-24-05
3	ECR# 533 JMR	12-07-10
4	ECR# 816 SCJ	11-3-11



DIRECTION EXITING TOOL,
EARS DOWN, TO THE BACK



DIRECTION TOWARD APPLICATOR,
EARS UP, TO THE FRONT

UNCONTROLLED COPY

 THIRD ANGLE PROJECTION	TOOL NO. 0847	Title: MALE TWIST GROUND: L6-15, 250 VOLTS-15 AMPS			
		DO NOT SCALE DWG.	Drawn By: S.JOHNSON	Date: 1-18-05	
TOLERANCES UNLESS OTHERWISE SPECIFIED INCHES: .XX - ±.030 .XXX - ±.015 ANGLES - ±5°	 ETCO	ETCO Incorporated Engineered Products 25 Bellows Street Warwick, R.I. 02888 Phone: (401)467-2400 FAX: (401)467-9230 www.ETCO.com	Chk'd/App'd By:	Scale: 4:1	Size B
Dwg. No.: MALETLGRD-V3					