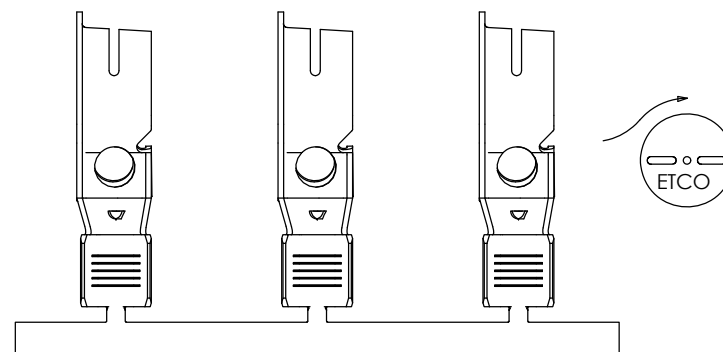
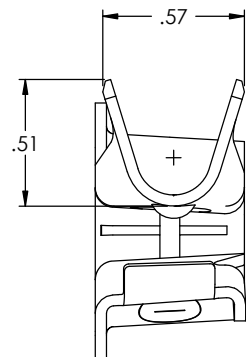
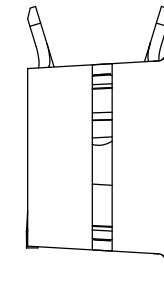
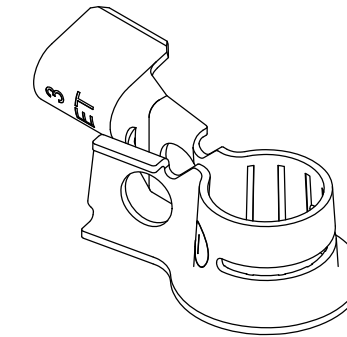
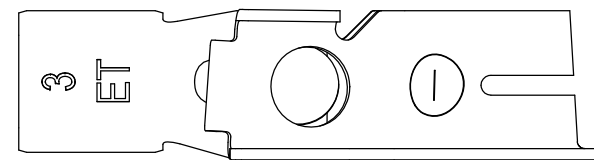
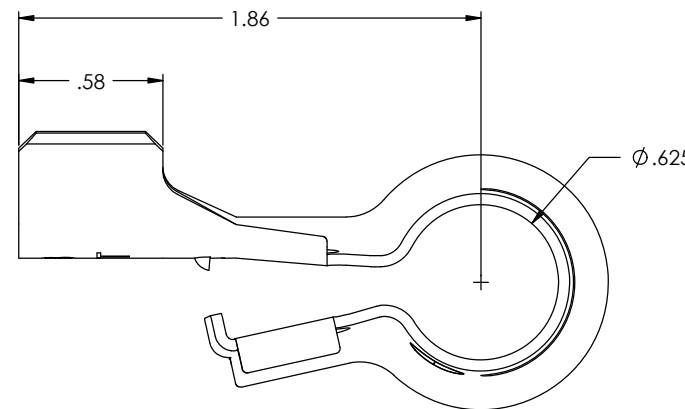
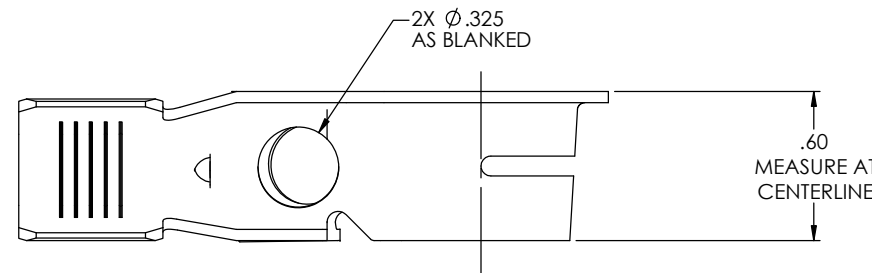
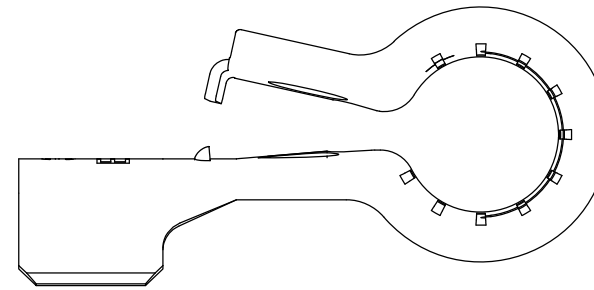


NOTE:

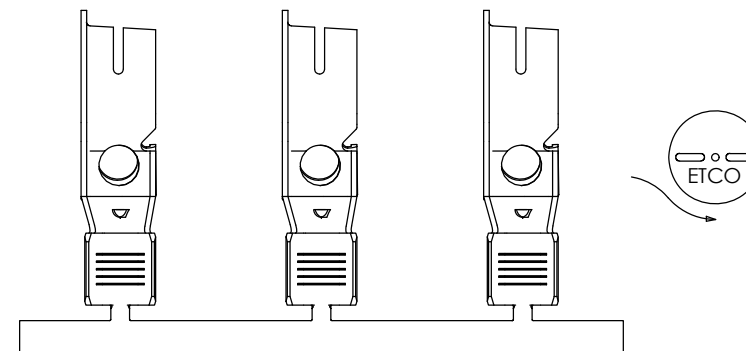
- 1.) MAT'L: .045 THK, BRASS, #2 TEMPER (HALF HARD), ANNEALED TO TEMPER, PER ETCO METAL CODE NO. 07043.
- 2.) MAT'L: .045 THK, PRE-TINNED BRASS, #2 TEMPER (HALF HARD), ANNEALED TO TEMPER, PER ETCO METAL CODE NO. 07042.
- 3.) PARTS MAY BE COATED WITH A LIGHT FILM OF LUBRICATION USED IN THE MANUFACTURING PROCESS.
- 4.) WIRE RANGE: 4 - 6 AWG
- 5.) FOR USE WITH $\phi 5/16"$ BOLT. ①

| P/C | DESCRIPTION | MAT'L |
|-------|------------------|--------|
| 52118 | BPC7-N-1*ARC-THB | NOTE 2 |

| Rev. | Description of Change/ SCN# | Date |
|------|----------------------------------|-------------|
| - | INITIAL CUSTOMER DRAWING RELEASE | JMR 2/22/10 |
| 1 | ECR #7185 | SMK 6-22-23 |



DIRECTION EXITING TOOL, EARS UP, TO THE FRONT



DIRECTION TOWARD APPLICATOR, FROM RIGHT, EARS UP, TO THE FRONT

| | | | | | |
|---|-------------------------|--|-----------------------------|----------------------|--------------------------------|
| UNCONTROLLED COPY | | | | | |
| THIRD ANGLE PROJECTION | TOOL NO. 0869 | Title: NEGATIVE BATTERY TERMINAL | | | |
| | | DO NOT SCALE DWG. | Drawn By: J. RAMALHO | Date: 2-22-10 | Chk'd/App'd By: |
| TOLERANCES UNLESS OTHERWISE SPECIFIED INCHES: .XX - ± 0.030 .XXX - ± 0.015 ANGLES: $\pm 5^\circ$ | | ETCO Incorporated Engineered Products 25 Bellows Street Warwick, RI 02888 Phone: (401) 467-2400 Fax: (401) 467-9230 www.ETCO.com | Scale: 2X | Size: C | Dwg. No.: 52118 cust |