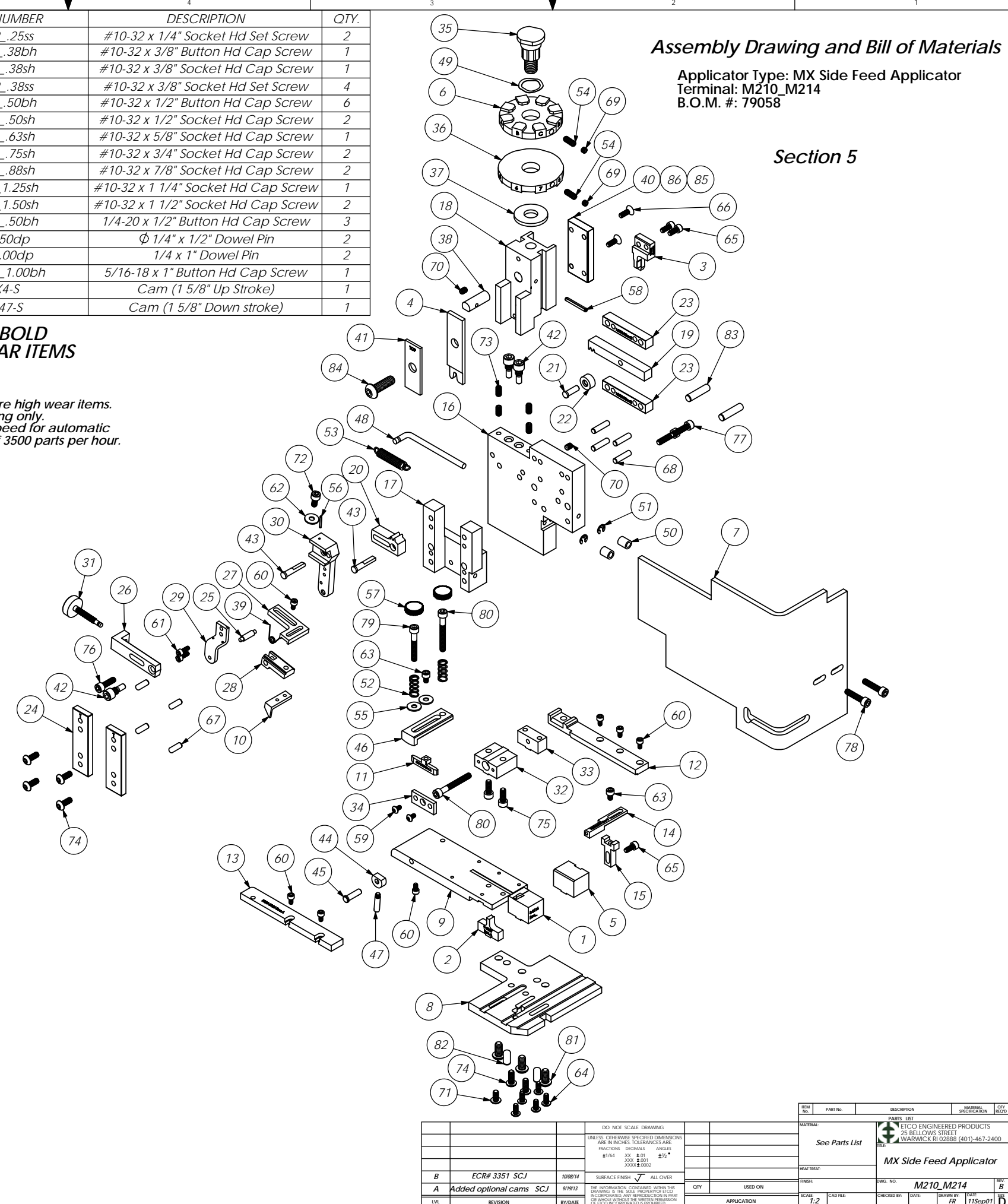


ITEM NO.	Part_Code	PART NUMBER	DESCRIPTION	QTY.	ITEM NO.	Part_Code	PART NUMBER	DESCRIPTION	QTY.
1	71742	8-3116	Cut-Off Die	1	70	63054	10-32_.25ss	#10-32 x 1/4" Socket Hd Set Screw	2
2	76511	9-3037	Anvil	1	71	78993	10-32_.38bh	#10-32 x 3/8" Button Hd Cap Screw	1
3	71744	12-3116	Cut-Off Punch	1	72	70110	10-32_.38sh	#10-32 x 3/8" Socket Hd Cap Screw	1
4	76513	13-3037	Wire rolling tool	1	73	71626	10-32_.38ss	#10-32 x 3/8" Socket Hd Set Screw	4
5	74802	26-3000	Backup Block	1	74	76501	10-32_.50bh	#10-32 x 1/2" Button Hd Cap Screw	6
6	71772	34-3116	Wire Crimp Dial	1	75	63056	10-32_.50sh	#10-32 x 1/2" Socket Hd Cap Screw	2
7	76403	199-3005	Safety Guard	1	76	70293	10-32_.63sh	#10-32 x 5/8" Socket Hd Cap Screw	1
8	76538	200-3037	Base Plate	1	77	63532	10-32_.75sh	#10-32 x 3/4" Socket Hd Cap Screw	2
9	74060	250-3002	Feed Plate	1	78	70925	10-32_.88sh	#10-32 x 7/8" Socket Hd Cap Screw	2
10	75942	303-3021	Feed Finger	1	79	77396	10-32_1.25sh	#10-32 x 1 1/4" Socket Hd Cap Screw	1
11	76495	403-3032	Brake Shoe	1	80	63826	10-32_1.50sh	#10-32 x 1 1/2" Socket Hd Cap Screw	2
12	75175	500-3009	Rear Guide Rail	1	81	63632	1.4-20_.50bh	1/4-20 x 1/2" Button Hd Cap Screw	3
13	71775	1000-3116	Front Guide Rail	1	82	63827	1.4_.50dp	Ø 1/4" x 1/2" Dowel Pin	2
14	76464	1600A-3001	Adjustable Stripper	1	83	63510	1.4_1.00dp	1/4 x 1" Dowel Pin	2
15	74803	1600B-3000	Adjustable Stripper Holder	1	84	63055	5.16-18_1.00bh	5/16-18 x 1" Button Hd Cap Screw	1
16	71029	MX2A-S	Mounting Frame	1	85	74344	MX4-S	Cam (1 5/8" Up Stroke)	1
17	71030	MX2B-S	Plunger Frame	1	86	74416	MX47-S	Cam (1 5/8" Down stroke)	1
18	74343	MX3	Ram	1					
19	74438	MX5-S	Cam Rack	1					
20	74346	MX6	Gear Arm	1					
21	74347	MX7	Cam Pin	1					
22	74350	MX8	Cam Roller	1					
23	74351	MX10-S	Rack Pad	2					
24	74352	MX11	Gib	2					
25	74356	MX12	Feed Finger Pivot Pin	1					
26	74360	MX13	Adjusting Bar	1					
27	74361	MX14-S	Feed Finger Arm	1					
28	74362	MX15-S	Feed Finger Guide	1					
29	74364	MX16	Retainer	1					
30	74371	MX18-S	Swing Arm	1					
31	74376	MX25	Stroke Adjustment Screw	1					
32	74384	MX29-S	Slide Support	1					
33	74388	MX30-S	Support Anchor	1					
34	74390	MX32-S	Support Cover	1					
35	74407	MX33	Mounting Post	1					
36	74409	MX35	Insulation Dial	1					
37	74411	MX36	Dial Spacer	1					
38	74412	MX44	Locating Dowel	1					
39	74415	MX45-S	Feed Finger Spring	1					
40	74417	MX48-S	Cam (1 1/8" Up Stroke)	1					
41	74418	MX49	Tool Retainer	1					
42	74419	MX50	Safety Pivot Pin	3					
43	74420	MX52	Pivot Pin	2					
44	74425	MX84-S	Brake Cam	1					
45	74426	MX85-S	Cam Pivot Pin	1					
46	75178	MX87-S	Lift Arm	1					
47	74430	MX88-S	Lever	1					
48	74614	MX90-S	Spring Bracket	1					
49	72310	MX104	Wave Disc Spring	1					
50	74491	GS-375	Guard Spacer	2					
51	75083	Irving 3100-18	External Retaining Ring	2					
52	77322	LC-045E-10-M	Spring	2					
53	74611	LE-037CD-6	Extension Spring	1					
54	70739	McMaster-Carr #3126A53	Spring Plunger	1					
55	72519	McMaster Carr #98029A043	#8 Hardened Washer	2					
56	74447	McMaster-Carr #98296A109	Expansion Pin (1/16 x 1/2")	1					
57	73785	SPI 99-602-5	#10 Black Knurled Knob	2					
58	62040	1.8_1.00rp	1/8" x 1" Roll Pin	1					
59	63792	6-32_.25bh	#6-32 x 1/4" Button Hd Cap Screw	2					
60	63207	6-32_.25sh	#6-32 x 1/4" Socket Hd Cap Screw	7					
61	63209	6-32_.38sh	#6-32 x 3/8" Socket Hd Cap Screw	2					
62	63210	8fw	#8 Flatwasher	1					
63	63163	8-32_.25sh	#8-32 x 1/4" Socket Hd Cap Screw	2					
64	61472	8-32_.38bh	#8-32 x 3/8" Button Hd Cap Screw	5					
65	63161	8-32_.38sh	#8-32 x 3/8" Socket Hd Cap Screw	3					
66	63052	8-32_.50fh	#8-32 x 1/2" Flat Hd Cap Screw	2					
67	63158	3.16_.50dp	Ø 3/16" x 1/2" Dowel Pin	4					
68	63470	3.16_.75dp	Ø 3/16" x 3/4" Dowel Pin	4					
69		10-32_.12 sjs	#10-32 x 1/8" Socket Jam Screw	2					

NOTE: ITEMS MARKED IN BOLD TEXT ARE HIGH WEAR ITEMS

- NOTE:**
- (1) Items marked in bold text are high wear items.
 - (2) Use OEM replacement tooling only.
 - (3) Recommended machine speed for automatic equipment is a maximum of 3500 parts per hour.



REV	DESCRIPTION	DATE	BY/DATE	APP	SCALE	CDR	CHKD	DATE	REV
B	ECR# 3351 SCJ	10/08/14							B
A	Added optional cams SCJ	9/19/13							B

REV	DESCRIPTION	DATE	BY/DATE	APP	SCALE	CDR	CHKD	DATE	REV
1					1:2				1

REV	DESCRIPTION	DATE	BY/DATE	APP	SCALE	CDR	CHKD	DATE	REV
1					1:2				1

REV	DESCRIPTION	DATE	BY/DATE	APP	SCALE	CDR	CHKD	DATE	REV
1					1:2				1

REV	DESCRIPTION	DATE	BY/DATE	APP	SCALE	CDR	CHKD	DATE	REV
1					1:2				1

REV	DESCRIPTION	DATE	BY/DATE	APP	SCALE	CDR	CHKD	DATE	REV
1					1:2				1