



REFERENCE LIST:
R13
ECC APPLICATOR
BILL OF MATERIAL NUMBER
79074
REV A

WARNING !
NEVER OPERATE
THIS OR ANY
APPLICATOR
WITHOUT SAFETY
GUARD IN POSITION.

PART CODE	PART NUMBER	QUANTITY	DESCRIPTION
75495	1100-FS	(1)	PLUNGER
77918	1102-FS	(1)	FLOATING SHANK
75728	1155	(1)	ADJUST SCREW
75724	1150	(1)	INSULATION BLOCK
75710	1125	(1)	CAM ROLLER BRACKET
75719	1142	(1)	CAM ROLLER BEARING
71770	*12-R16-2	(1)	CUT-OFF PUNCH
78540	*13-363	(1)	WIRE ROLLING TOOL
73528	6-047-50	(1)	SPRING
74410	314L-2	(1)	CAM
74403	311	(1)	SPRING PIN
74404	312	(1)	CAM TAPER PIN
74402	310	(1)	CAM RETURN SPRING
73899	101	(1)	TOP CASTING
76969	169	(2)	UNIVERSAL GIBS
74675	406	(1)	COTTER PIN
74676	407	(1)	BRAKE SPRING
77286	408-687	(1)	BRAKE BUSHING
74674	405	(1)	TAPER PIN
74673	404	(1)	BRAKE CAM
74498	403-1	(1)	BRAKE BODY
74496	402	(1)	SPRING RETAINER
74495	401	(1)	BRAKE SHAFT
74396	306	(1)	FEED FINGER STOP
74393	305	(1)	FEED FINGER ARM
74400	308	(1)	FEED SHAFT
76894	304-500	(1)	REAR SPACER
76860	307-8	(1)	SPRING
70083	7A-R15-2	(1)	FEED FINGER
76873	301-4	(1)	SHOULDER SCREW
73952	231	(2)	STRIPPER SPRING
75985	1602	(1)	WIRE STOP/STRIPPER
73955	235	(1)	GUIDE SPACER BLOCK
78539	500-481	(1)	REAR / RIGHT GUIDE
78538	1000-334	(1)	FRONT / LEFT GUIDE

NOTE: ITEMS MARKED WITH AN *
ARE HIGH WEAR ITEMS

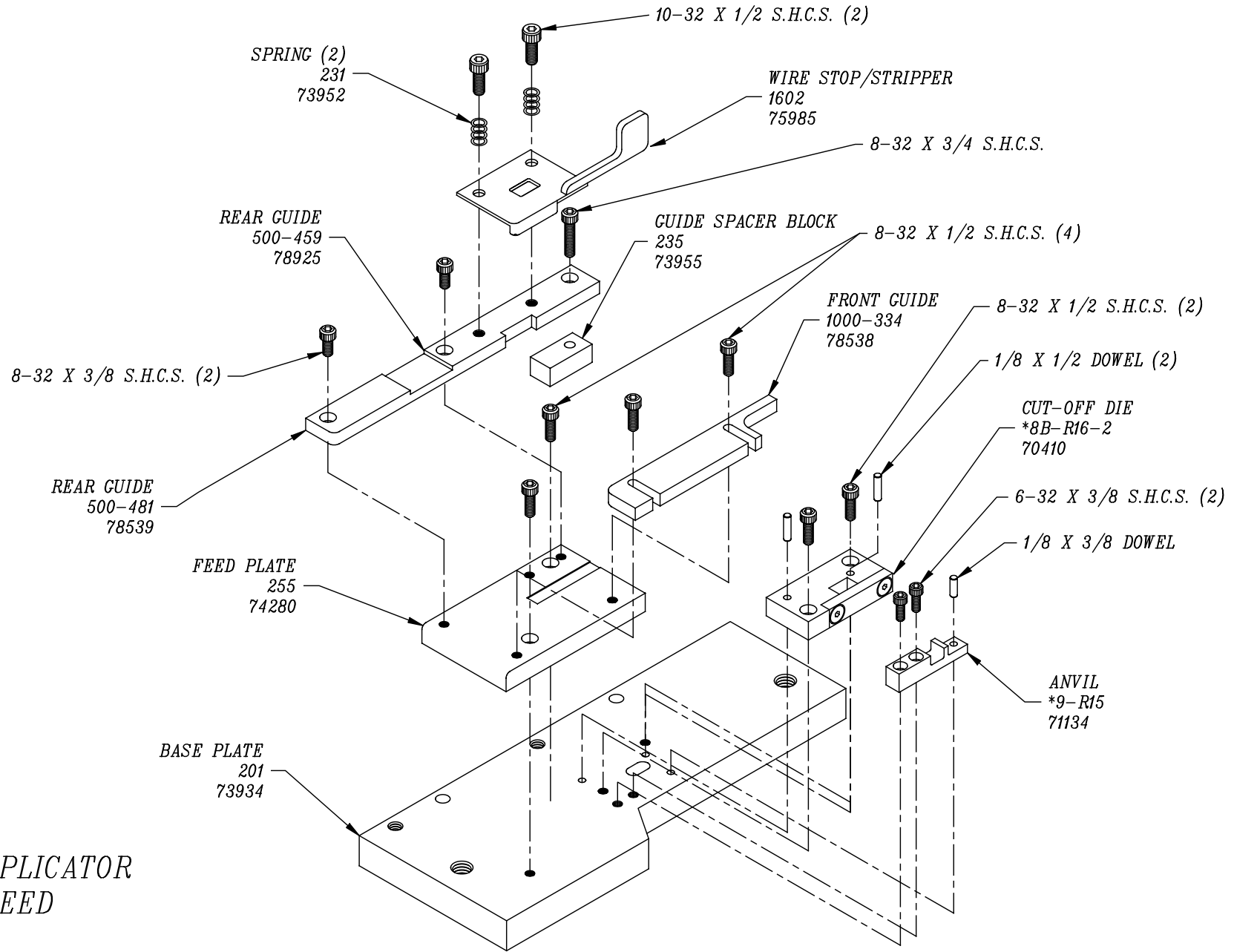


REFERENCE LIST:
R13
ECC APPLICATOR
 BILL OF MATERIAL NUMBER
79074
 REV A

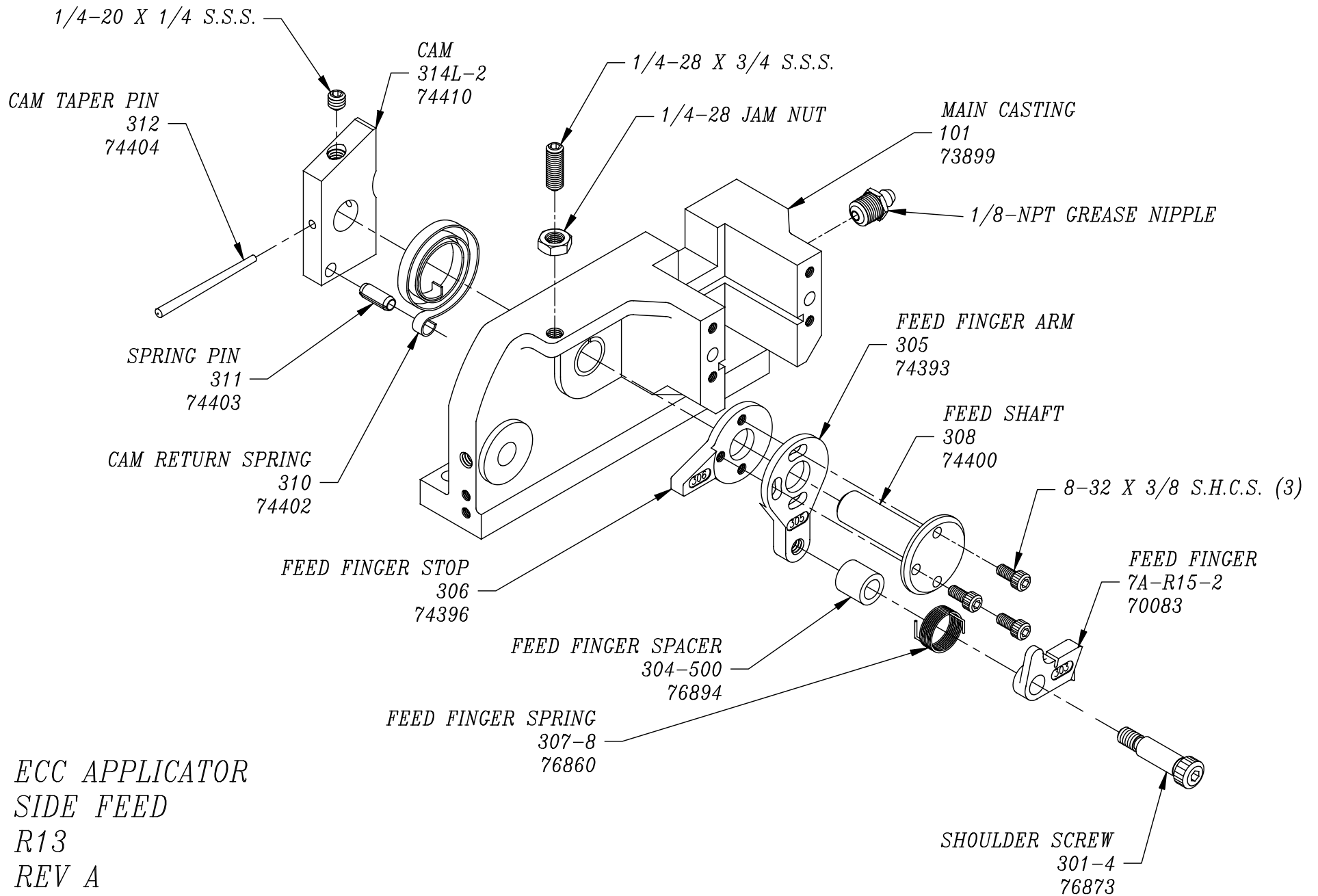
WARNING !
NEVER OPERATE
THIS OR ANY
APPLICATOR
WITHOUT SAFETY
GUARD IN POSITION.

PART CODE	PART NUMBER	QUANTITY	DESCRIPTION
74280	255	(1)	DIE PLATE
73934	201	(1)	BASE PLATE
70410	*8B-R16-2	(1)	DIE
71134	*9-R15	(1)	ANVIL
76186	1800	(1)	STOCK CHUTE
73922	176	(1)	GUARD
		(1)	1/8 X 3/8" DOWEL
		(2)	1/8 X 1/2" DOWEL
		(2)	1/8 X 1" DOWEL
		(2)	6-32 X 3/8" S.H.C.S.
		(9)	8-32 X 3/8" S.H.C.S.
		(8)	8-32 X 1/2" S.H.C.S.
		(1)	8-32 X 3/4" S.H.C.S.
		(1)	10-32 X 5/16" S.H.C.S.
		(2)	10-32 X 3/8" S.H.S.S.
		(2)	10-32 X 1/2" S.H.C.S.
		(1)	10-32 X 1 1/4" S.H.C.S.
		(2)	1/4 X 1" DOWEL
		(2)	1/4-20 X 1" S.H.C.S.
		(2)	1/4-20 X 1/4" S.S.S.
		(1)	1/4-28 X 1/2" S.H.C.S.
		(1)	1/4-28 X 3/4" S.S.S.
		(1)	1/4-28 JAM NUT
		(1)	5/16 X 3/4" SHOULDER SCREW
72069	#98407A118	(2)	E-STYLE RETAINING RINGS

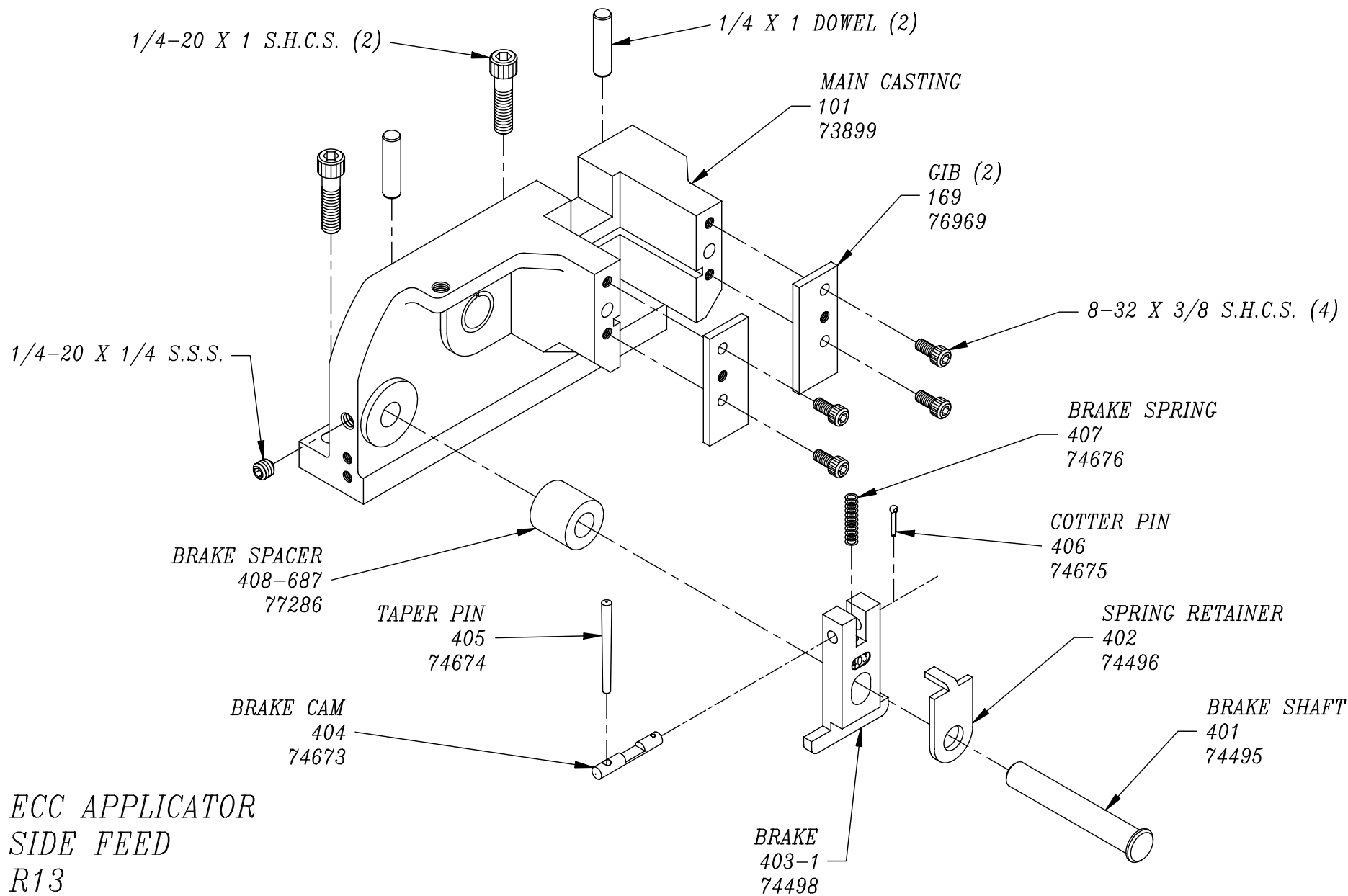
**NOTE: ITEMS MARKED WITH AN *
 ARE HIGH WEAR ITEMS**



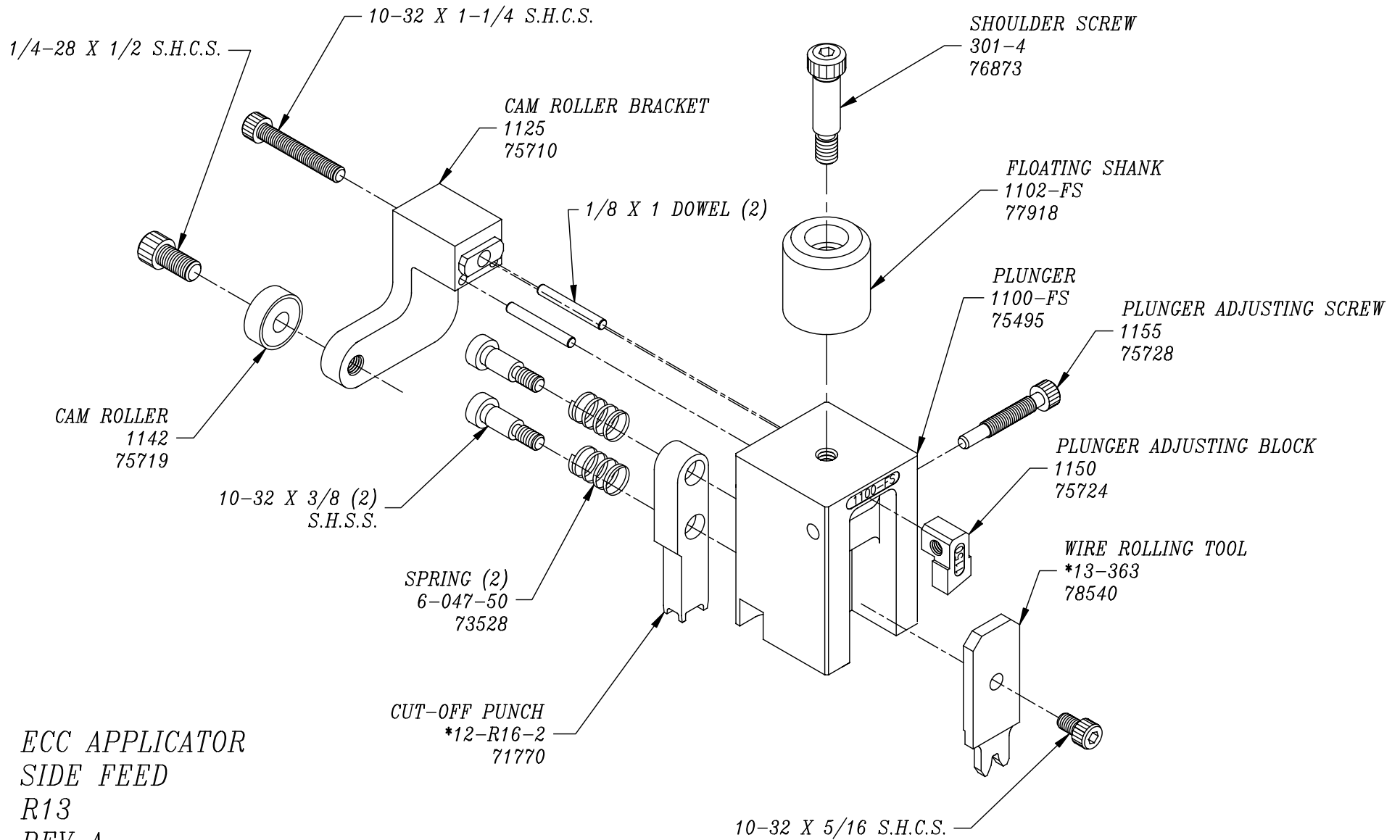
ECC APPLICATOR
 SIDE FEED
 R13
 REV A



ECC APPLICATOR
 SIDE FEED
 R13
 REV A



ECC APPLICATOR
 SIDE FEED
 R13
 REV A



ECC APPLICATOR
 SIDE FEED
 R13
 REV A

*ECC APPLICATOR
SIDE FEED
R13
REV A*

