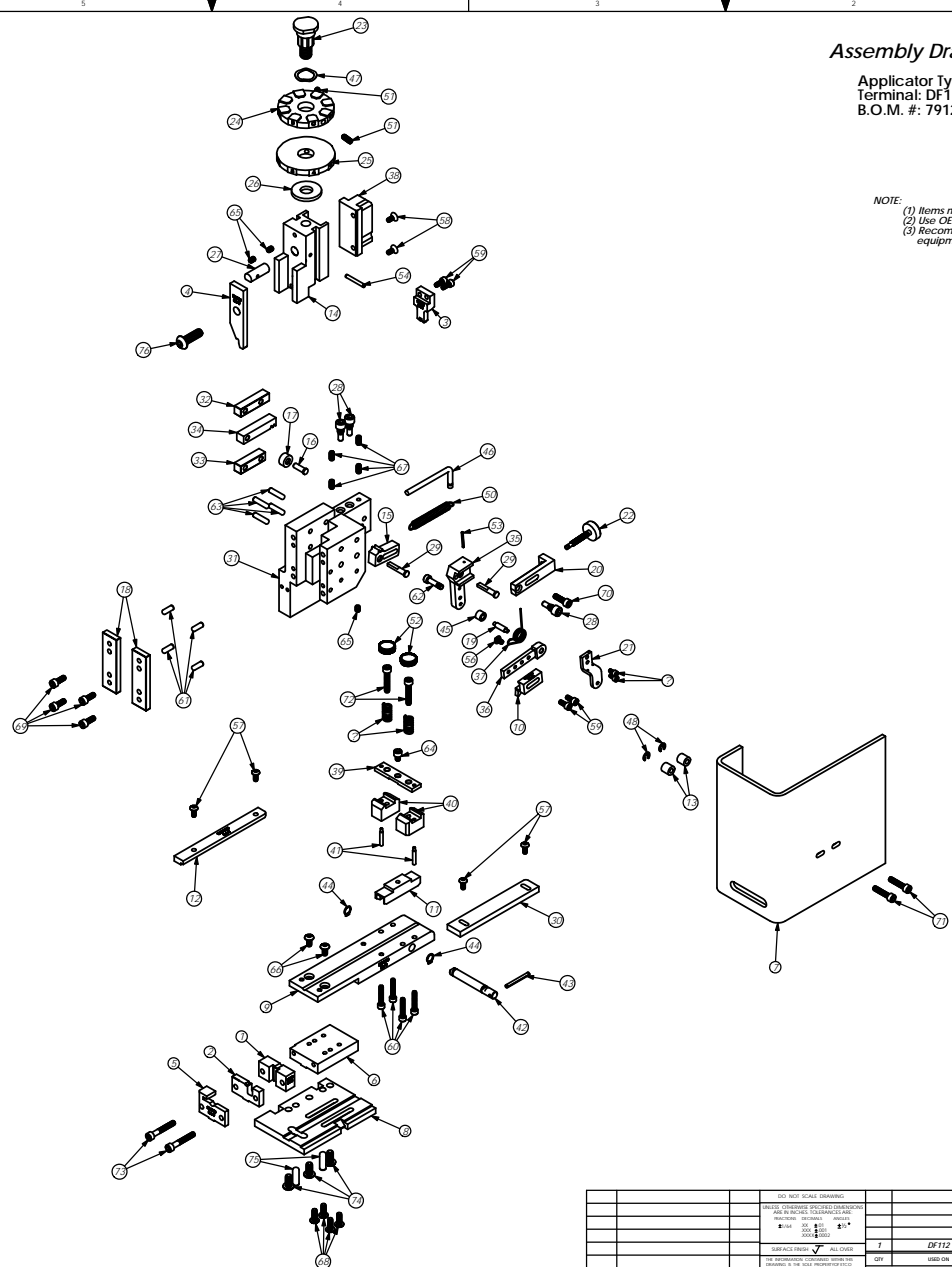


Item	Part Code	QTY	Part No./File Name	Description
1	40802	1	8-3135	Rear Cut-off Die
2	40803	1	9-3135	Wire Anvil
3	40805	1	12-3135	Cut-off Punch
4	40814	1	13-3135	Wire Rolling Tool
5	40820	1	26-3135	Terminal Hold Down
6	72039	1	26A-3008	Slide Support
7	1963007	1		Clutch
8	40821	1	200-3135	Bissable
9	40821	1	250-3135	Feed Plate
10	40829	1	303-3135	Feed Finger
11	40830	1	403-3135	Brake Shoe
12	40844	1	1000-3135	Left Guide Rail
13	74491	2	GS-375	Guard Spacer
14	74343	1	MX3	Beam
15	74346	1	MX6	Gate Arm
16	74347	1	MX7	Clam Pin
17	74350	1	MX8	Clam Roller
18	74352	2	MX11	Cib
19	74356	1	MX12	Feed Finger Pivot Pin
20	74360	1	MX13	Adjusting Bar
21	74364	1	MX16	Backstop
22	74376	1	MX25	Stroke Adjustment Screw
23	74407	1	MX33	Mounting Plate
24	71808	1	34-3026	Wire Clamp Die
25	74409	1	MX35	Insulation Dial
26	77605	1	MX36-135	Spacer Washer
27	74432	1	MX44	Locking Dowel
28	74419	2	MX50	Safety Pivot Pin
29	74420	2	MX52	Pivot Pin
30	74818	1	MX57-R	Right Guide Rail
31	74909	1	MX58-R	Frame
32	74912	1	MX68-R	Upper Back Pad
33	74913	1	MX70-R	Lower Back Pad
34	74914	1	MX71-R	Clam Back
35	72285	1	MX72-R1	Swing Arm
36	72287	1	MX73-R1	Feed Arm
37	72596	1	MX80-1-R	Feed Finger Spring
38	74521	1	MX89-R	Clam 1 1/8" Upstroke
39	74820	1	MX91-R	Lifter Plate
40	74821	2	MX92-R	Brake Support
41	74822	2	MX93-R	Lifter
42	74833	1	MX94-R	Brake Shaft
43	74835	1	MX96-R	Brake Handle
44	74837	2	MX97-R	Retaining Ring
45	72286	1	MX99-R1	Spacer
46	74917	1	MX100-R	Spring Bracket
47	72310	1	MX104	Wave Disc Spring
48	75083	2	Spring 1100-18	External Retaining Ring
49	75342	2	1C-045E-6-M	Brake Spring
50	74611	1	1E-037CD-6	Extension Spring
51	70739	2	McMaster Carr #3126A53	Spring Plunger
52	37385	2	39-99460-S	#10 Black Knurled Knob
53	40294	1	1.16_75cp	1/16" x 3/4" Roll Pin
54	40040	1	1.8_100cp	1/8" x 1" Roll Pin
55	43207	2	6-32_25sh	#6-32 x 1/4" Socket Hd Cap Screw
56	43212	1	8-32_25sh	#8-32 x 1/4" Button Hd Cap Screw
57	43213	4	8-32_38sh	#8-32 x 3/8" Button Hd Cap Screw
58	43508	2	8-32_38sh	#8-32 x 3/8" Flat Hd Cap Screw
59	43161	4	8-32_38sh	#8-32 x 3/8" Socket Hd Cap Screw
60	43162	4	8-32_38sh	#8-32 x 3/8" Socket Hd Cap Screw
61	43158	4	3-16_50cp	3/16" x 1/2" Dowel Pin
62	43194	1	3-16_10-32_50 shs	3/16" x 1/2" x 10-32 Shoulder Screw
63	43470	4	3-16_75cp	3/16" x 3/4" Dowel Pin
64	43473	1	10-32_25sh	#10-32 x 1/4" Socket Hd Cap Screw
65	43054	2	10-32_25sh	#10-32 x 1/4" Socket Hd Set Screw
66	78993	2	10-32_38sh	#10-32 x 3/8" Button Hd Cap Screw
67	4	10-32_38sh	#10-32 x 3/8" Socket Hd Set Screw	
68	4	10-32_50sh	#10-32 x 1/2" Button Hd Cap Screw	
69	43056	4	10-32_50sh	#10-32 x 1/2" Socket Hd Cap Screw
70	70293	1	10-32_63sh	#10-32 x 5/8" Socket Hd Cap Screw
71	43155	2	10-32_88sh	#10-32 x 7/8" Socket Hd Cap Screw
72	43156	2	10-32_100sh	#10-32 x 1" Socket Hd Cap Screw
73	77196	2	10-32_125sh	#10-32 x 1 1/4" Socket Hd Cap Screw
74	77196	3	1-4-20_50sh	1/4" x 1/2" Button Hd Cap Screw
75	4	1-4_75cp	1/4" x 3/4" Dowel Pin	
76	43053	1	5-16-18_1" 08sh	5/16-18 x 1" Button Hd Cap Screw



Assembly Drawing and Bill of Materials

Applicator Type: MX Rear
Terminal: DF112
B.O.M. #: 79121

Section 5

- NOTE:
- (1) Items marked in bold text are high wear items.
 - (2) Use OEM replacement tooling only.
 - (3) Recommended machine speed for automatic equipment is a maximum of 9500 parts per hour.

REV. NO.		REVISION		DATE		BY		CHKD.	
NO. OF SCALE DRAWINGS		NO. OF SCALE DRAWINGS		NO. OF SCALE DRAWINGS		NO. OF SCALE DRAWINGS		NO. OF SCALE DRAWINGS	
NO. OF REVISIONS		NO. OF REVISIONS		NO. OF REVISIONS		NO. OF REVISIONS		NO. OF REVISIONS	
DATE OF REVISION		DATE OF REVISION		DATE OF REVISION		DATE OF REVISION		DATE OF REVISION	
BY		BY		BY		BY		BY	
APPROVED		APPROVED		APPROVED		APPROVED		APPROVED	
TITLE		TITLE		TITLE		TITLE		TITLE	
DF112		DF112		DF112		DF112		DF112	
MATERIAL		MATERIAL		MATERIAL		MATERIAL		MATERIAL	
STEEL		STEEL		STEEL		STEEL		STEEL	
QUANTITY		QUANTITY		QUANTITY		QUANTITY		QUANTITY	
1		1		1		1		1	
UNIT		UNIT		UNIT		UNIT		UNIT	
EACH		EACH		EACH		EACH		EACH	
DRAWN		DRAWN		DRAWN		DRAWN		DRAWN	
DATE		DATE		DATE		DATE		DATE	
6/25/2012		6/25/2012		6/25/2012		6/25/2012		6/25/2012	