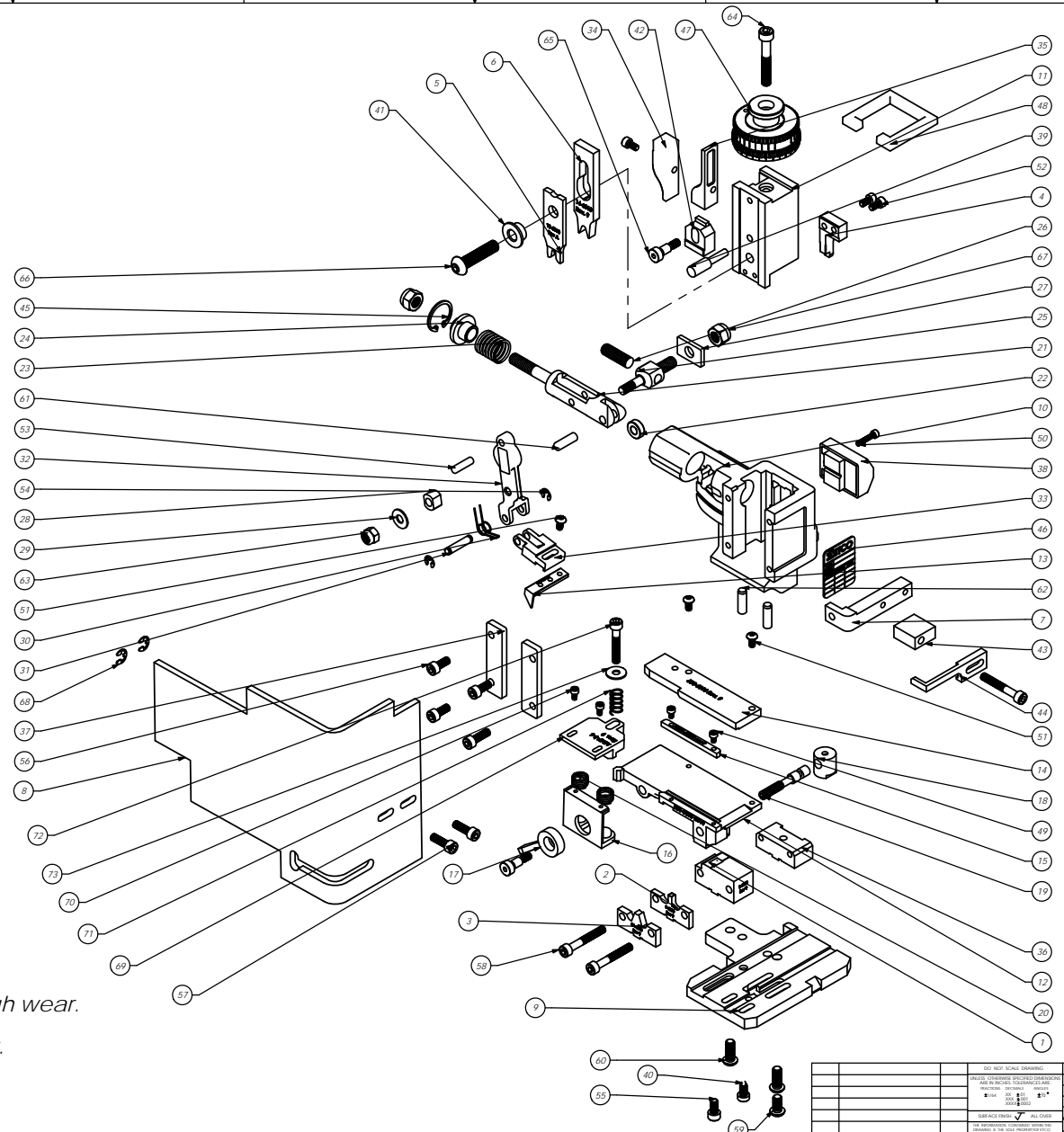


Parts List				
Item No	Part Code	Part No.	Description	QTY
1	81863	8-6010	Cut-off Die	1
2	81864	9-6010	Conductor Anvil	1
3	81865	9A-6010	Insulation Anvil	1
4	81866	12-6010	Cut-off Punch	1
5	81867	12-6010	Wire Rolling Tool	1
6	81868	14-6010	Insulation Rolling Tool	1
7	61626	26-6000	Guard Bracket	1
8	76403	199-3005	Safety Guard	1
9	81869	200-6010	Base Plate	1
10	61542	MM11	Frame	1
11	61545	MM3-S	Plunger	1
12	61689	250-6003	Feed Plate	1
13	61664	303-6003	Feed Finger	1
14	62937	500-6010	Rear Guide	1
15	61663	1000-6003	Front Guide	1
16	61736	MM7-S-1	Brake	1
17	61550	MM8-S	Brake Lever	1
18	61551	MM9-S	Adjustment Screw Retainer	1
19	61552	MM10-S	Adjustment Screw	1
20	61553	MM11-S	Brake Spring	2
21	61554	MM12	Adjustable Feed Piston	1
22	61555	MM13	Cam Roller	1
23	61556	MM14	Piston Spring	1
24	61557	MM15	Spring Plate	1
25	61558	MM16	Feed Adjustment Block	1
26	61559	MM17	Feed Adjustment Screw	1
27	61560	MM18	Retainer	1
28	61561	MM19	Guide Block	1
29	61562	MM20	Feed Washer	1
30	61563	MM21	Feed Finger Spring	1
31	61564	MM22	Feed Finger Shaft	1
32	61565	MM23	Feed Arm	1
33	61566	MM24	Feed Finger Retainer	1
34	61573	MM31	Post Feed Cam	1
35	61574	MM32	Pie-Feed Cam	1
36	61581	MM37-S	Tool Block	1
37	61583	MM39	Gib	2
38	61585	MM43	Counter Assy	1
39	61586	MM44	Locator Pin	1
40	61588	MM47	Deep Screw	1
41	61870	MM49-L	Tool Holder	1
42	61590	MM48	IoT Adjustment Block	1
43	61592	MM50-S	Stripper Spacer	1
44	61620	1600-6001	Stripper	1
45	61595	MM56	Retaining Ring	1
46	61598	MM59	ID Plate	1
47	61596	MM57	Continuous Regulation Head Assembly	1
48	61597	MM58	Protection Spacer	1
49	<i>M3x0.5_5_06h</i>	M3 x 5mm Socket Hd Cap Screw	2	
50	<i>M3x0.5_16_06h</i>	M3 x 0.5 x 16mm Socket Hd Cap Screw	1	
51	<i>M4x7_8_06h</i>	M4 x 7 x 8mm Button Hd Cap Screw	3	
52	<i>M4x7_8_06h</i>	M4 x 7 x 8 D Socket Hd Cap Screw	3	
53	<i>M5_18_06p</i>	M5 x 18mm Dowel Pin	1	
54	<i>M5_M3_R0r</i>	M5 External Retaining Ring	2	
55	<i>M5x_8_10_06h</i>	M5 x 8 x 10mm Socket Hd Cap Screw	1	
56	<i>M5x_8_12_06h</i>	M5 x 8 x 12mm Socket Hd Cap Screw	3	
57	<i>M5x_8_16_06h</i>	M5 x 8 x 16mm Socket Hd Cap Screw	3	
58	<i>M5x_8_35_06h</i>	M5 x 08 x 35mm Socket Hd Cap Screw	3	
59	<i>M6x1_0_12_06h</i>	M6 x 1.0 x 12mm Button Hd Cap Screw	1	
60	<i>M6x1_0_16_06h</i>	M6 x 1.0 x 16mm Button Hd Cap Screw	2	
61	<i>M6_18_06p</i>	M6 x 18mm Dowel Pin	1	
62	<i>M6_20dp</i>	M6 x 20mm Dowel Pin	2	
63	<i>M6_in</i>	M6 Lock Nut	1	
64	<i>M6x1_0_40_06h</i>	M6 x 1.0 x 40mm Socket Hd Cap Screw	1	
65	<i>M6_10rns</i>	M6 x 10mm Socket Hd Shoulder Screw	2	
66	62092	MB #1_25_35_06h	MB #1 25 x 35mm Button Hd Cap Screw	1
67	<i>M8_in</i>	M8 Lock Nut	2	
68	72069	McMaster Cap #10E1722	#10 E-Style Retaining Ring	2
69	62938	MM7-S-6	Brake Shoe	1
70	<i>M3x0.5_6_06h</i>	M3 x 0.5 x 6mm Socket Hd Cap Screw	2	
71	61897	LC-D40-E6	Brake Spring	1
72	<i>M5x_8_30_06h</i>	M5 x 08 x 30mm Socket Hd Cap Screw	1	
73	<i>10fw</i>	#10 Flatwasher	1	



R188
79175

Note:
1) Items marked in "Bold Italic" are high wear.
2) Use OEM replacement tooling only.

REV		REV	DATE	BY	CHK	APP
SEE PARTS LIST R188 Side Feed R188 6/25/2012						