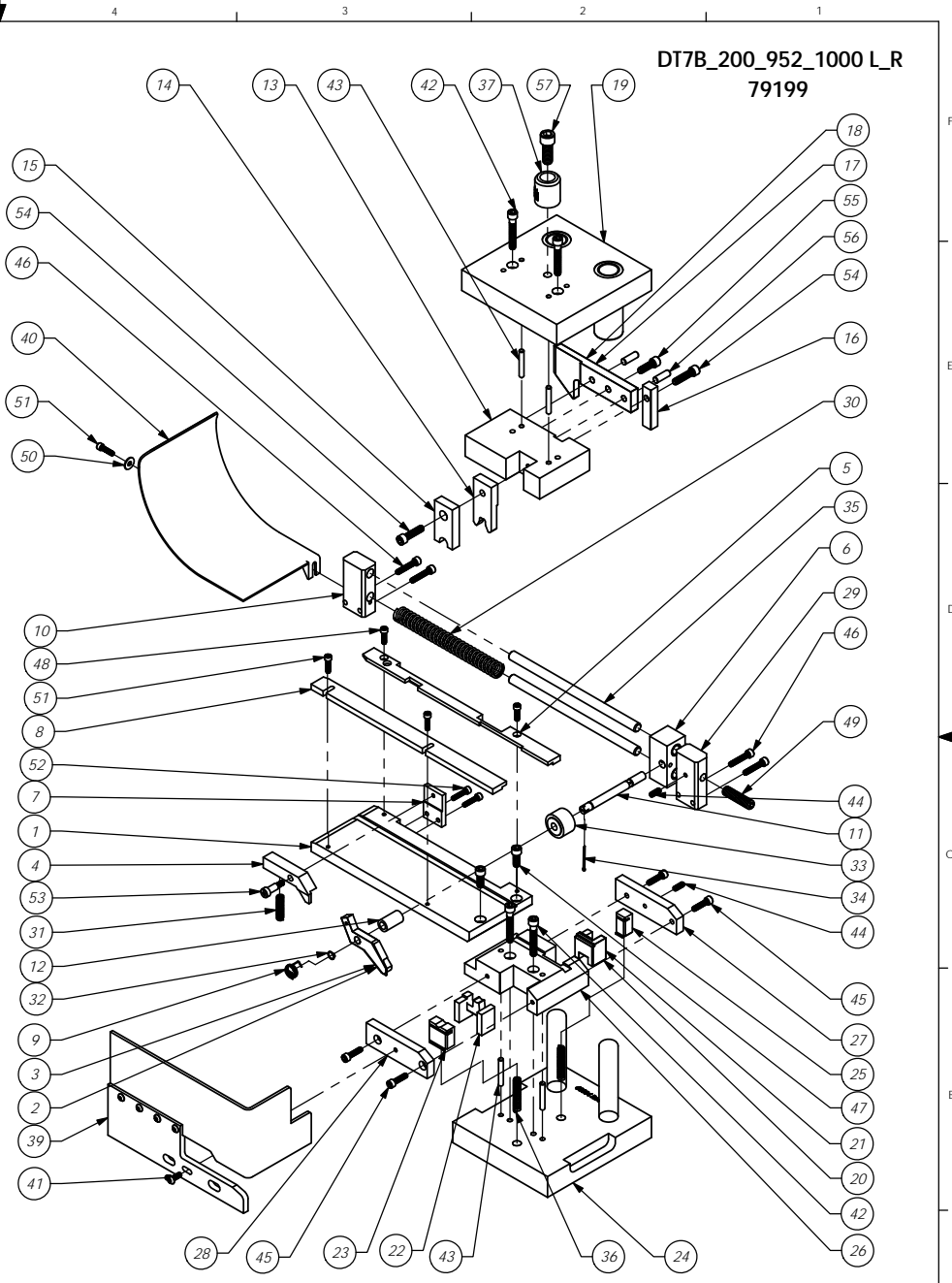


ITEM NO.	PART NUMBER	DESCRIPTION	DT7B & DT952 L-R/QT.Y.
1	68094-Feed Plate	Feed Plate	1
2	68024 - FEED FINGER	Feed Finger	1
3	68638-Feed Finger	Feed Finger: DT1000, SP974	1
4	68096-Brake	Brake	1
5	68097-Rear Guide	Rear Guide	1
6	68069-Slide Block	Slide Block	1
7	68098-Brake Mount	Brake Mount	1
8	68099-Front Guide	Front Guide	1
9	68026 - FEED FINGER SPRING	Feed Finger Spring	1
10	68073-L-H Slide Bracket	L-H Slide Bracket	1
11	62188 - Feed Finger Shaft	Feed Finger Shaft	1
12	62189-Feed Finger Spacer	Feed Finger Spacer	1
13	68102-Tool Holder	Tool Holder	1
14	68077-Roll Tool	Roll Tool	1
15	68007 - FRONT DRIVER	Front Driver - 8mm	1
16	68078-Rear Driver	Rear Driver	1
17	68715-Cam	Cam: DT-1000	1
18	68103-Cam	Cam: DT7B & DT200	1
19	68080-Die Hat	Die Hat	1
20	68081-Rear Die	Rear Die, DT-200, DT-250 & DT-1000	1
21	68521-Rear Die	Rear Die, DT-7B & DT-952	1
22	68082-Anvil	Anvil	1
23	68083-Front Cutoff	Front Cutoff	1
24	68084-Die Base	Die Base	1
25	68085-Rear Carrier Cutoff	Rear Carrier Cutoff	1
26	68291-Die Holder	Die Holder	1
27	68705-Front Die Cover	Front Die Cover	1
28	68704-Rear Die Cover	Rear Die Cover	1
29	68089-RH Slide Block	RH Slide Bracket	1
30	68031 - SPRING	Spring	1
31	68020 - BRAKE SPRING	Spring	1
32	68025 - SPRING CLIP	Spring Clip	1
33	68022 - BEARING	Bearing	1
34	Default	68090-Cotter Pin - 1/6" x 1"	1
35	68091-Slide Shaft	Slide Shaft	2
36	68012 - SPRING	Spring	2
37	68001 - HAT SHANK	Hat Shank	1
38	Boston Gear #B68-8	68092-Bushing	2
39	68093-Guard	Guard	1
40	68064-Chute	Chute	1
41	10-32_50bh	#10-32 x 1/2" Button Hd Cap Screw	1
42	1.4-20_1.50sh	1/4-20 x 1-1/2" Socket Hd Cap Screw	4
43	3.16_1.25dp	3/16 x 1 1/4" Dowel Pin	4
44	10-32_50ss	#10-32 x 1/2" Socket Hd Set Screw	2
45	10-32_75sh	#10-32 x 3/4" Socket Hd Cap Screw	4
46	10-32_1.00sh	#10-32 x 1" Socket Hd Cap Screw	4
47	1.4-20_63sh	1/4-20 x 5/8" Socket Hd Cap Screw	2
48	8-32_56sh	#8-32 x 9/16" Socket Hd Cap Screw	2
49	3.8-16_1.50sf	3/8-16 x 1.5" Soc Set Screw	1
50	8fw	#8 Flatwasher	1
51	8-32_63sh	#8-32 x 5/8" Socket Hd Cap Screw	3
52	8-32_75sh	#8-32 x 3/4" Socket Hd Cap Screw	2
53	10-24_5sh	#10-24 x .5" Socket Head Shoulder Screw	1
54	1.4-20_1.00sh	1/4-20 x 1" Socket Hd Cap Screw	2
55	1.4-20_75sh	1/4-20 x 3/4" Socket Hd Cap Screw	1
56	1.4_75dp	1/4" x 3/4" Dowel Pin	2
57	3.8-16_1.00sh	3/8-16 x 1" Socket Hd Cap Screw	1
58	Part1^DT7B_200_952_1000_L_R		1
59	Part2^DT7B_200_952_1000_L_R		1



ITEM NO.	PART NO.	DESCRIPTION	MATERIAL SPECIFICATION	QTY	RECD
MATERIAL		<b>See Parts List</b> DT-7B, DT-200, DT-952, DT-1000 Applicator			
HEAT TREAT		SURFACE FINISH: <input checked="" type="checkbox"/> ALL OVER			
FINISH		REVISION: F Redrawn in SW from AP 7006 Rev E			
SCALE		1:3.5			
DATE		12-6-11			
BY		SCJ			
APP		6/19/2012			