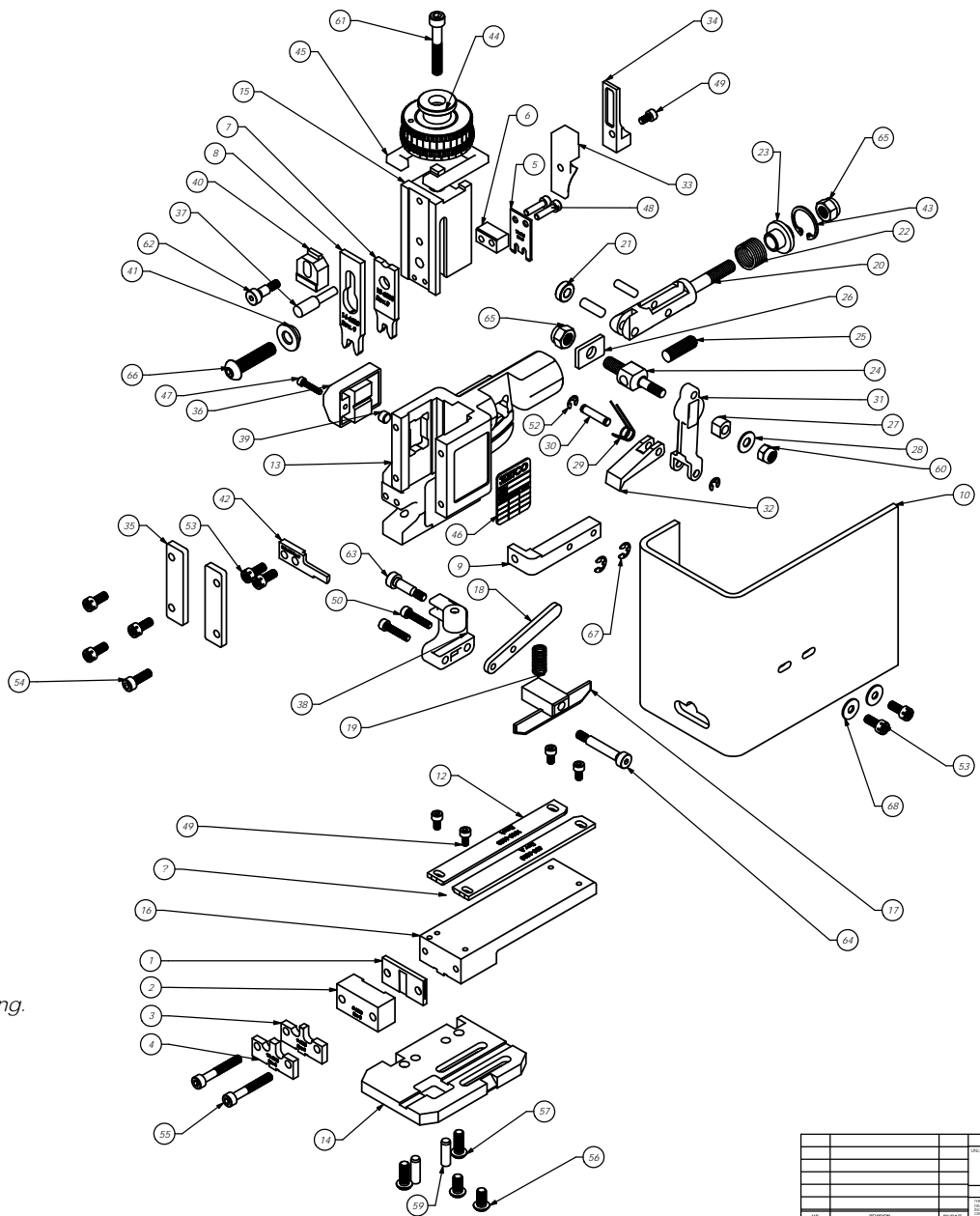


R361E  
79240

Parts List				
Item No.	Part Code	Part No.	Description	Quantity
1	62281	8A-6023	Rear Cut-Off Die	1
2	62280	8-6023	Front Cut-Off Die	1
3	62276	9-6023	Anvil	1
4	62277	9A-6023	Insulation Anvil	1
5	62278	12-6023	Cut-Off Punch	1
6	62279	12A-6023	Cut-Off Punch	1
7	62274	13-6023	Wire Rolling Tool	1
8	62275	14-6023	Insulation Rolling Tool	1
9	61626	26-6000	Guard Bracket	1
10	61715	199-6001	Guard	1
11	62284	500-6023	Right Guide	1
12	62585	1000-6023	Left Guide	1
13	61600	MM1-R	Frame	1
14	61601	MM2-R	Base Plate	1
15	61602	MM3-R	Plunger	1
16	61603	MM4-R	Feed Plate	1
17	61689	MM7-R.1	Blade Style Brake	1
18	61605	MM8-R	Brake Lever	1
19	61633	MM11-R	Brake Spring	1
20	61554	MM12	Adjustable Feed Platen	1
21	61555	MM13	Cam Roller	1
22	61556	MM14	Piston Spring	1
23	61557	MM15	Spring Plate	1
24	61558	MM16	Feed Adjustment Block	1
25	61559	MM17	Feed Adjustment Screw	1
26	61560	MM18	Retainer	1
27	61561	MM19	Guide Block	1
28	61562	MM20	Feed Washer	1
29	61563	MM21	Feed Finger Spring	1
30	61564	MM22	Feed Finger Shaft	1
31	61565	MM23	Feed Arm	1
32	61606	MM25-R	Feed Fingers	1
33	61573	MM31	Post-Feed Cam	1
34	61574	MM32	Pre-Feed Cam	1
35	61583	MM39	GB	2
36	61588	MM42	Counter Assy	1
37	61586	MM44	Locator Pin	1
38	61609	MM45-R	Brake Arm	1
39	61587	MM46	Counter Button	1
40	61590	MM48	RI Adjustment Block	1
41	61880	MM49-L	Top Header	1
42	62295	1600-6023	Stripper	1
43	61595	MM56	Retaining Ring	1
44	61596	MM57	Continuous Regulation Head Assembly	1
45	61597	MM58	Protection Spacer	1
46	61598	MM59	ID Plate	1
47		M3x0.5-16-0.0h	M3 x 0.5 x 16mm Socket Hd Cap Screw	1
48		M4x0.7-16-0.0h	M4 x 0.7 x 16mm Socket Hd Cap Screw	2
49		M4x0.7-8-0.0h	M4 x 0.7 x 8mm Socket Hd Cap Screw	5
50		M4x0.7-20-0.0h	M4 x 0.7 x 20mm Socket Hd Cap Screw	2
51		M5-18-0.0p	M5 x 18mm Dowel Pin	1
52		M5-M5-50r	M5 External Retaining Ring	2
53		M5-8-12-0.0h	M5 x 8 x 12mm Socket Hd Cap Screw	7
54		M5x 8-16-0.0h	M5 x 8 x 16mm Socket Hd Cap Screw	1
55		M5x 8-35-0.0h	M5 x 8 x 35mm Socket Hd Cap Screw	2
56		M6x1.0-12-0.0h	M6 x 1.0 x 12mm Button Hd Cap Screw	2
57		M6x1.0-16-0.0h	M6 x 1.0 x 16mm Button Hd Cap Screw	2
58		M6-18dp	M6 x 18mm Dowel Pin	1
59		M6-20dp	M6 x 20mm Dowel Pin	2
60		M6-In	M6 Lock Nut	1
61		M6x1.0-40-0.0h	M6 x 1.0 x 40mm Socket Hd Cap Screw	1
62		M6-10shs	M6 x 10mm Socket Hd Shoulder Screw	1
63		M6-16shs	M6 x 16mm Socket Hd Shoulder Screw	1
64		M6-30shs	M6 x 30mm Socket Hd Shoulder Screw	1
65		M8-In	M8 Lock Nut	2
66	62092	M8 x 1.25-35-0.0h	M8 x 1.25 x 35mm Button Hd Cap Screw	1
67	72069	#98407A132	#10 E-Style Retaining Ring	2
68		10W	#10 Flatwasher	2



Note:  
 1) Items marked in "Bold Italic" are high wear tooling.  
 2) Use OEM replacement tooling only.

NO. 100		REV. 100		DATE 10/11/11		BY J. B. BROWN		CHK D. J. BROWN	
SEE PARTS LIST									
Mighty Mini Rear Feed									
R361E									
DATE	REVISION	BY	CHK	APP	DATE	REV	APP	DATE	REV