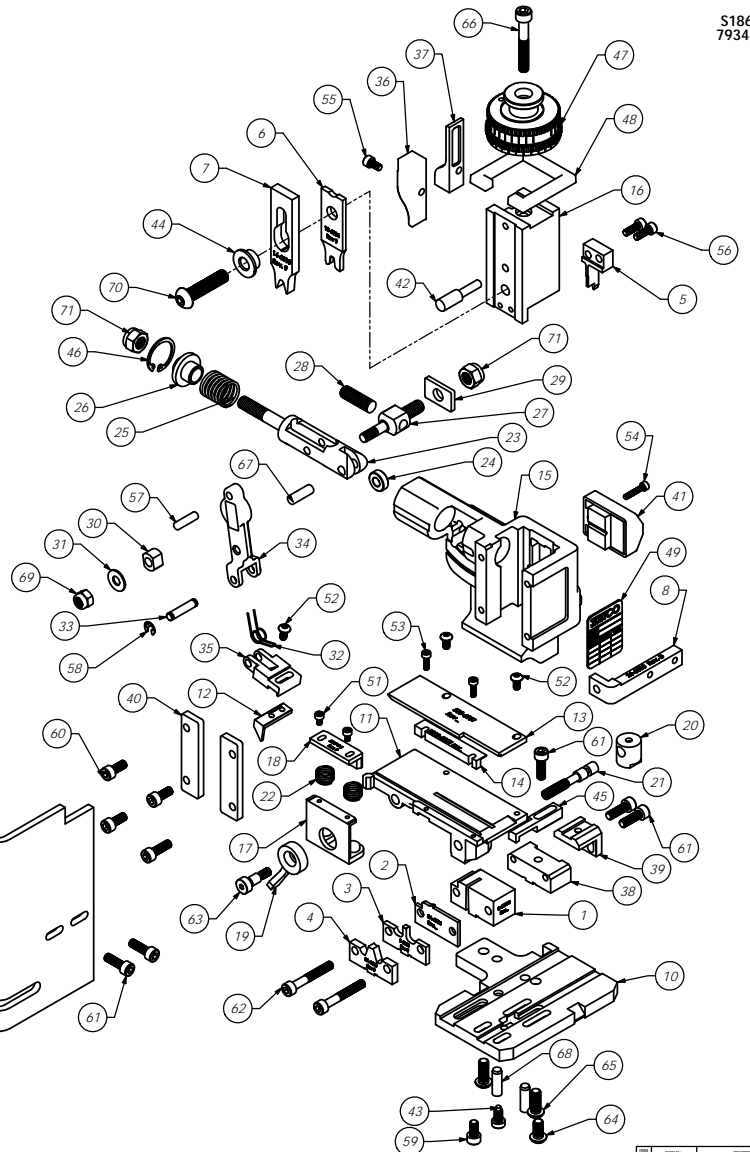
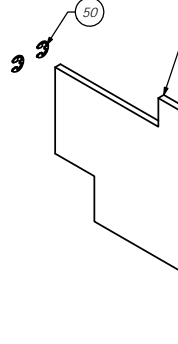
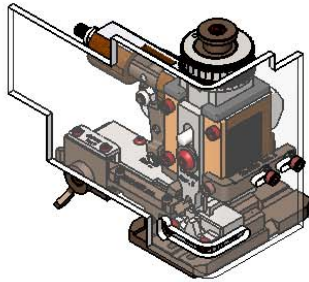


Item No.	Part Code	Part No.	Description	QTY.
1	63612	8-6034-1	Cut-off Die	1
2	62989	8A-6034	Die Cover Plate	1
3	62183	9-6020	Cond. Anvil	1
4	61865	9A-6010	Insulation Anvil	1
5	62992	12-6034	Cut-off Punch	1
6	63777	13-6034	Wire Rolling Tool	1
7	61868	14-6010	Insulation Rolling Tool	1
8	61626	26-6000	Guard Bracket	1
9	76403	199-3005	Safety Guard	1
10	63038	200-6034	Base Plate	1
11	63639	250-6051	Feed Plate	1
12	62996	303-6034	Feed Finger	1
13	63613	500-6051	Rear Guide	1
14	63614	1000-6051	Front Guide	1
15	61542	MM1-S	Frame	1
16	61545	MM3-S	Plunger	1
17	61736	MM7-S-1	Brake	1
18	62605	MM7-S-5	Brake Shoe	1
19	61550	MM8-S	Brake Lever	1
20	61551	MM9-S	Adjustment Screw Retainer	1
21	61552	MM10-S	Adjustment Screw	1
22	61553	MM11-S	Brake Spring	2
23	61554	MM12	Adjustable Feed Piston	1
24	61555	MM13	Cam Roller	1
25	61556	MM14	Piston Spring	1
26	61557	MM15	Spring Plate	1
27	61558	MM16	Feed Adjustment Block	1
28	61559	MM17	Feed Adjustment Screw	1
29	61560	MM18	Retainer	1
30	61561	MM19	Guide Block	1
31	61562	MM20	Feed Washer	1
32	61563	MM21	Feed Finger Spring	1
33	61564	MM22	Feed Finger Shaft	1
34	61565	MM23	Feed Arm	1
35	61566	MM24	Feed Finger Retainer	1
36	61573	MM31	Post-feed Cam	1
37	61574	MM32	Pre-Feed Cam	1
38	61581	MM37-S-1	Tool Block	1
39	62703	MM38-S-1	Backup Block	1
40	61583	MM39	Gib	2
41	61585	MM43	Counter Ass'y.	1
42	61586	MM44	Locator Pin	1
43	61588	MM47	Dog Screw	1
44	61870	MM49-3	Tool Holder	1
45	62850	MM52-S	Stripper/Wire Stop	1
46	61595	MM56	Retaining Ring	1
47	61596	MM57	Continuous Regulation Head Assembly	1
48	61597	MM58	Protection Spacer	1
49	61598	MM59	ID Plate	1
50	72069	McMaster Carr #98407A122	#10 E-Style Retaining Ring	2
51		M3x0.5_5.0sh	M3 x 5mm Socket Hd Cap Screw	2
52		M4x.7_8.0bh	M4 x .7 x 8mm Button Hd Cap Screw	3
53		M3x0.5_10.0sh	M3 x 0.5 x 10mm Socket Hd Cap Screw	2
54		M3x0.5_16.0sh	M3 x 0.5 x 16mm Socket Hd Cap Screw	1
55		M4x0.7_8.0sh	M4 x .7 x 8.0 Socket Hd Cap Screw	1
56		M4x0.7_12.0sh	M4 x 12mm Socket Hd Cap Screw	2
57		M5_18.0dp	M5 x 18mm Dowel Pin	1
58		M5_M3_9err	M5 External Retaining Ring	2
59	63521	M5x.8_10.0sh	M5 x .8 x 10mm Socket Hd Cap Screw	1
60		M5x.8_12.0sh	M5 x .8 x 12mm Socket Hd Cap Screw	3
61		M5x.8_16.0sh	M5 x .8 x 16mm Socket Hd Cap Screw	6
62		M5x.8_35.0sh	M5 x .08 x 35mm Socket Hd Cap Screw	2
63		M5_10shss	M5 x 10mm Socket Hd Shoulder Screw	1
64		M6x1.0_12.0bh	M6 x 1.0 x 12mm Button Hd Cap Screw	1
65		M6x1.0_16.0bh	M6 x 1.0 x 16mm Button Hd Cap Screw	2
66		M6x1.0_40.0sh	M6 x 1.0 x 40mm Socket Hd Cap Screw	1
67		M6_18dp	M6 x 18mm Dowel Pin	1
68		M6_20dp	M6 x 20mm Dowel Pin	2
69		M6_in	M6 Lock Nut	1
70	62092	M8 x1.25_35.0bh	M8 x 1.25 x 35mm Button Hd Cap Screw	1
71		M8_in	M8 Lock Nut	2

Note:
 1) Items marked in "Bold Italic" = High wear tooling.
 2) Use OEM replacement tooling only.



S186
79344

Approved
For
Tooling
7/10/2012

NO. OF SCALE DRAWING		PARTS LIST	
DATE OF SCALE DRAWING		DATE OF PARTS LIST	
SCALE		SCALE	
DRAWN BY		CHECKED BY	
DATE		DATE	
APPROVED BY		APPROVED BY	
TITLE		TITLE	
QTY		QTY	
USED ON		USED ON	
APPLICATOR		APPLICATOR	