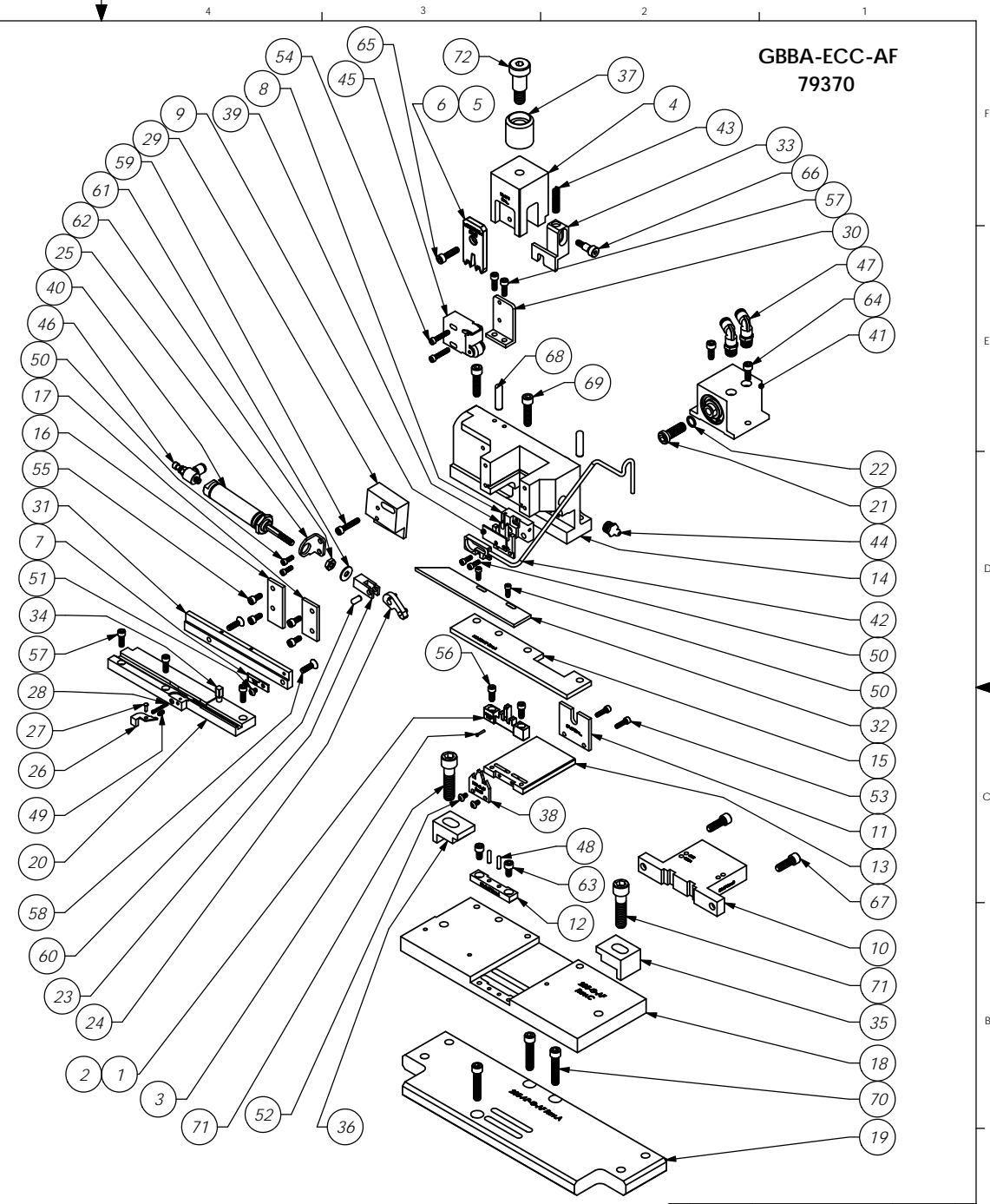


ITEM NO.	Part_code	PART NUMBER	DESCRIPTION	QTY.
1	60288	9-BRIDGE-AF	Anvil	1
2	60294	9-BRIDGE-12-AF	Anvil (For 12 Ga.)	1
3	60293	9P-G-AF	Anvil Pin	1
4	61348	11-AF-1	Plunger	1
5	60045	13-BRIDGE	Wire Rolling Tool (14/16/18 AWG)	1
6	64105	13-BRIDGE-12-1	Wire Rolling Tool (12/14/16 AWG)	1
7	60681	19-G-AF	Assembly Stop Tab	1
8	60342	22-AF	Adjustable Sensor Mount	1
9	60918	22-G-AF	Proximity Switch Filler Plate	1
10	63856	26-AF	Slide Cylinder Mounting Plate	1
11	63857	27-AF	Slide Pusher Plate	1
12	63872	28-G-AF	Slide Stop	1
13	60285	29-G-AF	Slide	1
14	63858	101-AF	Casting	1
15	63859	116-187-AF	Casting Spacer	1
16	63869	169-L-AF	Left Gib	1
17	63868	169-R-AF	Right Gib	1
18	63861	205-G-AF	Base Plate	1
19	63860	205-AP-G-AF	Adapter Plate	1
20	60374	250-G-AF	Die Plate	1
21	62835	301-AF	Slide Cylinder Screw	1
22	62834	302-AF	Slide Cylinder Washer	1
23	60339	303A-AF	Clevis Bracket	1
24	60338	303-G-AF	Feed Finger	1
25	63863	305-AF	Cylinder Mount	1
26	60680	306-AF	Feed Stop	1
27	60372	306A-AF	Feed Stop Pivot Pin	1
28	60373	307-AF	Feed Stop Spring	1
29	60834	314-G-AF	Adj. Cylinder Mount Brkt	1
30	60919	315-AF	Cylinder Release Switch Mount	1
31	63873	500-G-AF	Rear Guide	1
32	60252	1000-G-AF	Top Guide	1
33	60797	1600-375	Stripper/Pressure Pad	1
34	60400	1651-G-AF	Locator Pin, Assembly Stop	1
35	71795	BPC-GAMMA	Clamp, Base Plate	1
36	60291	BPC-GAMMA-AF	Clamp, Base Plate	1
37	77634	CS-110	Plunger Shank	1
38	60363	WG-G-AF	Wire Guide	1
39	64126	WG-G-AF-1	Wire Guide	1
40	70261	Bimba M-02-1.5-NR	Push Cylinder	1
41	63866	Fabco SQL-121-.5	Slide Cylinder	1
42	70397	Keyence EH-614A	Proximity Switch	1
43	72355	LC-032C-12-M	Compression Spring	1
44	63506	McMaster-Carr #1095K11	1/8 NPT Grease Fitting	1
45	73345	Parker #PXXCM121	Limit Switch	1
46	63867	Pisco JSC156-U10U	Ø5/32" x 10-32 Speed Control	1
47	73803	Pisco PL156-NTU	Ø5/32" x 1/8-NPT Elbow Fitting	2
48	63507	1.8_50dp	Ø 1/8" x 1/2" Dowel	2
49	70737	5-40_25ssf	#5-40 x 1/4" Socket Set Screw	1
50	63726	5-40_38sh	#5-40 x 3/8" Socket Hd Cap Screw	6
51	63792	6-32_19bh	#6-32 x 3/16" Button Hd Cap Screw	1
52	63792	6-32_25bh	#6-32 x 1/4" Button Hd Cap Screw	2
53	63544	6-32_50sh	#6-32 x 1/2" Socket Hd Cap Screw	2
54	69493	6-32_75sh	#6-32 x 3/4" Socket Hd Cap Screw	2
55	63161	8-32_38sh	#8-32 x 3/8" Socket Hd Cap Screw	4
56	63161	8-32_44sh	#8-32 x 7/16" Socket Hd Cap Screw	2
57	63164	8-32_50sh	#8-32 x 1/2" Socket Hd Cap Screw	5
58	76799	8-32_63fh	#8-32 x 5/8 Flat Hd Cap Screw	2
59	63949	8-32_88sh	#8-32 x 7/8" Socket Hd Cap Screw	1
60	63753	10fw	#10 Flatwasher	1
61	63167	10-32 hn	#10-32 Hex Nut	1
62	70110	10-32_38sh	#10-32 x 3/8" Socket Hd Cap Screw	2
64	63056	10-32_50sh	#10-32 x 1/2" Socket Hd Cap Screw	2
65	63532	10-32_75sh	#10-32 x 3/4" Socket Hd Cap Screw	1
66	70273	1.4_38shss	1/4" x 3/8" Socket Hd Shoulder Screw	1
67	70030	1.4-20_75sh	1/4-20 x 3/4" Socket Hd Cap Screw	2
68	63510	1.4_1.00dp	1/4 x 1" Dowel Pin	2
69	63168	1.4-20_1.00sh	1/4-20 x 1" Socket Hd Cap Screw	2
70	71482	1.4-20_1.25sh	1/4-20 x 1 1/4" Socket Hd Cap Screw	3
71	70886	3.8-16_1.50sh	3/8-16 x 1 1/2" Socket Hd Cap Screw	2
72	62622	1.2_75shss	1/2" x 3/4" Socket Hd Shoulder Screw	1



**GBBA-ECC-AF  
79370**

ITEM NO.	PART NO.	DESCRIPTION	MATERIAL SPECIFICATION	QTY. REQ'D
PARTS LIST				
See Parts List				
ECC Side Auto Feed Applicator GBBA-ECC-AF with Bridge Stripper				
GBBA-ECC-AF				
DO NOT SCALE DRAWING				
UNLESS OTHERWISE SPECIFIED DIMENSIONS ARE IN INCHES. TOLERANCES ARE:				
FRACTIONS DECIMALS ANGLES				
±1/64 .001 .01				
±.001 .001 ±1/16				
±.002 .002				
SURFACE FINISH: ALL OVER				
1 GBBA-AF				
QTY. USED ON				
SCALE: 7:3 CAD FILE				
CHECKED BY: DATE: DRAWN BY: SCJ 11/15/12				
REVISION				
BY/DATE				
APPLICATION				