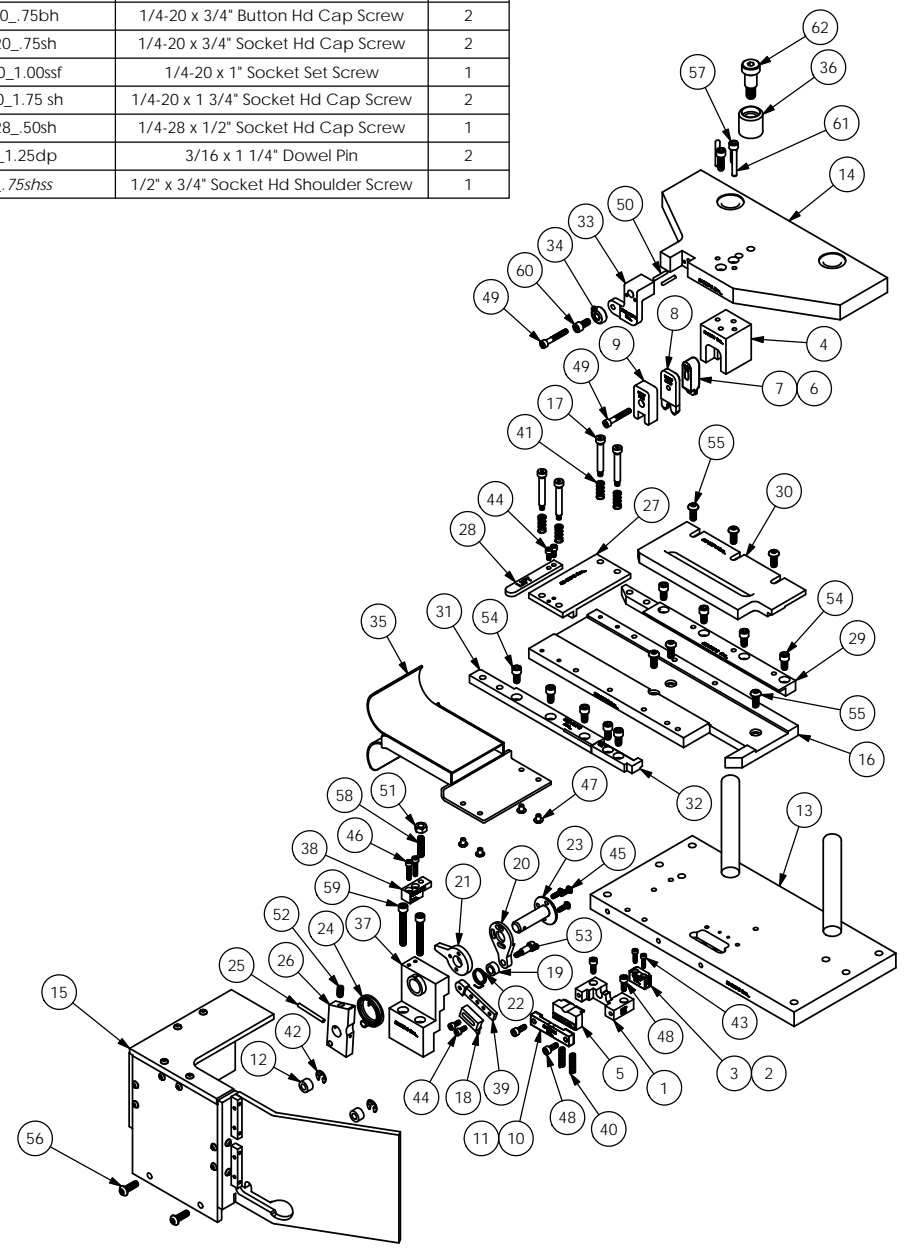


ITEM NO.	Part_Code	PART NUMBER	DESCRIPTION	QTY.	ITEM NO.	Part_Code	PART NUMBER	DESCRIPTION	QTY.
1	61165	9-310P	Anvil	1	54	78328	1.4-20_50sh	1/4-20 x 1/2" Socket Hd Cap Screw	9
2	64223	9A-310P	Bend Anvil	1	55	70536	1.4-20_62bh	1/4-20 x 5/8" Button Hd Cap Screw	6
3	64249	9A-310P-1	No Bend Anvil	1	56	63943	1.4-20_75bh	1/4-20 x 3/4" Button Hd Cap Screw	2
4	64221	11-310P-2	Plunger	1	57	70030	1.4-20_75sh	1/4-20 x 3/4" Socket Hd Cap Screw	2
5	64242	12-310P-2	Cut-off Punch	1	58	76826	1.4-20_1.00ssf	1/4-20 x 1" Socket Set Screw	1
6	64222	12A-310P	Bend Punch	1	59		1.4-20_1.75 sh	1/4-20 x 1 3/4" Socket Hd Cap Screw	2
7	64241	12A-310P-2	Stripper	1	60	62184	1.4-28_50sh	1/4-28 x 1/2" Socket Hd Cap Screw	1
8	61163	13-310P	Wire Rolling Tool	1	61	70291	3.16_1.25dp	3/16 x 1 1/4" Dowel Pin	2
9	60387	15-310P	Cut-off Driver	1	62	62622	1.2_75shss	1/2" x 3/4" Socket Hd Shoulder Screw	1
10	64240	21-310P-2-2	Cut-off Retainer	1					
11	60494	21-310P-2-1	Cut-off Retainer	1					
12	64246	26-655	Guard Spacer	2					
13	64219	30-310P-2	Base Plate	1					
14	64220	31-310P-2	Top Plate	1					
15	64239	176-310P-2	Guard Assembly	1					
16	64224	250-310P-2	Die Plate	1					
17	64238	301-26	Shoulder Screw	4					
18	60391	303-310P-2	Feed Finger	1					
19	64230	304-.253	Feed Finger Spacer	1					
20	64228	305-310P-2	Feed Finger Arm	1					
21	77639	306-TH	Feed Stop Arm	1					
22	76787	307-4	Feed Finger Spring	1					
23	74400	308-Finished	Feed Shaft	1					
24	74402	310	Cam Return Spring	1					
25	74404	312	Cam Taper Pin	1					
26	64235	314-310P-2	Cam	1					
27	64233	403-310P-2	Brake	1					
28	64234	403-310P-2-1	Brake Handle	1					
29	64226	500-310P-2	Rear Guide	1					
30	64248	500-310P-3	Top Rear Guide	1					
31	64225	1000-310P-2	Front Guide	1					
32	64237	1000-310P-3	Front Guide	1					
33	64236	1125R-310P-2	Cam Roller Bracket	1					
34	75719	1142	Cam Roller Bearing	1					
35	64227	1800-310P-2	Stock Chute	1					
36	77634	CS-110	Plunger Shank	1					
37	64229	FS-310P-2	Feed Stand	1					
38	64232	FSB-310P-2	Feed Stop Block	1					
39	64231	MX73-R-310P	Feed Arm	1					
40	60449	LC-042D-10	Lee Spring LC-042D-10	2					
41	77322	LC-045E-10-M	Spring	4					
42	72086	McMaster Carr 98407A120	1/4" E-Style Retaining Ring	2					
43	63544	6-32_50sh	#6-32 x 1/2" Socket Hd Cap Screw	2					
44	63161	8-32_38sh	#8-32 x 3/8" Socket Hd Cap Screw	4					
45	8-32_50bh	#8-32 x 1/2" Button Hd Cap Screw	3						
46	63787	8-32_75sh	#8-32 x 3/4" Socket Hd Cap Screw	2					
47		10-24_25 BHCS		4					
48	63056	10-32_50sh	#10-32 x 1/2" Socket Hd Cap Screw	4					
49	77396	10-32_1.25sh	#10-32 x 1 1/4" Socket Hd Cap Screw	2					
50	70665	1.8_75dp	Ø1/8" x 3/4" Dowel	2					
51	71485	1.4-20hn	1/4-20 Hex Nut	1					
52	71210	1.4-20_50ssf	1/4-20 x 1/2" Socket Hd Set Screw	1					
53		1.4_50shss	Ø1/4" x 1/2" Socket Hd Shoulder Screw	1					

**PNGRD106 PNGRD108
79414**



DO NOT SCALE DRAWING		UNLESS OTHERWISE SPECIFIED DIMENSIONS ARE IN INCHES. TOLERANCES ARE: FRACTIONS: DECIMALS: ANGLES: ±1/64 XX ±.01 XXXX ±.002	
SURFACE FINISH: $\sqrt{\text{ALL OVER}}$		1 PNGRD106/PNGRD108	
THE INFORMATION CONTAINED WITHIN THIS DRAWING IS THE SOLE PROPERTY OF ETCO ENGINEERED PRODUCTS. ANY REPRODUCTION IN PART OR WHOLE WITHOUT THE WRITTEN PERMISSION OF ETCO ENGINEERED PRODUCTS IS PROHIBITED.		QTY USED ON APPLICATION	

REV. NO.	PART NO.	DESCRIPTION	MATERIAL SPECIFICATION	QTY. REQ'D.
PARTS LIST				
See Parts List				
ETCO ENGINEERED PRODUCTS 25 BELLOWS STREET WARWICK, RI 02888 (401)-467-2400				
PNGRD106/PNGRD108 Hand Load Die Set Applicator				
FINISH: HEAT TREAT: DRG. NO. PNGRD106/PNGRD108				
SCALE: 1:4 CHECKED BY: DATE: DRAWN BY: SCJ DATE: 10/03/14				