



**REFERENCE LIST:
M111-R, M210
LEFT & RIGHT
ECC APPLICATOR
79597**

**WARNING !
NEVER OPERATE
THIS OR ANY
APPLICATOR
WITHOUT SAFETY
GUARD IN POSITION.**

PART CODE	PART NUMBER	QUANTITY	DESCRIPTION
73322	11077-1-FS	(1)	PLUNGER
77918	1102-FS	(1)	FLOATING SHANK
		N/A	CUT-OFF SCREW
		N/A	ADJUST SCREW
		N/A	INSULATION BLOCK
75715	1125-D	(1)	CAM ROLLER BRACKET
75719	1142	(2)	CAM ROLLER BEARING
73195	*12-M110/210-1	(1)	CUT-OFF PUNCH
78265	*13-M210-111	(1)	WIRE ROLLING TOOL
73321	12-M110/210-2	(1)	PILOT PUNCH
		N/A	INSULATION ROLLING TOOL
75865	314L-2R	(1)	CAM
74410	314L-2	(1)	CAM
74403	311	(2)	SPRING PIN
74404	312	(2)	CAM TAPER PIN
74402	310	(2)	CAM RETURN SPRING
73210	D-101	(1)	TOP CASTING
76969	169	(2)	UNIVERSAL GIBS
		N/A	GIB
74675	406	(2)	COTTER PIN
74676	407	(2)	BRAKE SPRING
73205	408-.1035	(2)	BRAKE BUSHING
74674	405	(2)	TAPER PIN
74673	404	(2)	BRAKE CAM
74545	403-45	(2)	BRAKE BODY
74496	402	(2)	SPRING RETAINER
74495	401	(2)	BRAKE SHAFT
74396	306	(1)	FEED FINGER STOP
73207	306R-3	(1)	FEED FINGER STOP
74393	305	(2)	FEED FINGER ARM
73204	304-.750	(2)	REAR SPACER
74400	308	(2)	FEED SHAFT
76743	307-16	(1)	SPRING
73389	307-16R	(1)	SPRING
73208	7A-M110	(1)	FEED FINGER

**NOTE: ITEMS MARKED WITH AN *
ARE HIGH WEAR ITEMS**



**REFERENCE LIST:
M111-R, M210
LEFT & RIGHT
ECC APPLICATOR
79597**

**WARNING !
NEVER OPERATE
THIS OR ANY
APPLICATOR
WITHOUT SAFETY
GUARD IN POSITION.**

PART CODE	PART NUMBER	QUANTITY	DESCRIPTION
73209	7A-M210	(1)	FEED FINGER
76713	301-5	(2)	SHOULDER SCREW
73198	1600-81-1	(1)	STRIPPER / STOP
76973	500-112-3R	(1)	REAR /RIGHT GUIDE
76972	500-112-3L	(1)	REAR / LEFT GUIDE
75433	1039	(1)	FRONT / LEFT GUIDE
75434	1039R	(1)	FRONT / RIGHT GUIDE
74044	250-89	(1)	DIE PLATE
76970	250-89R	(1)	DIE PLATE
73938	205	(1)	BASE PLATE
73196	*8B-M110/210-1	(1)	DIE
73201	*9-M110/210-1	(1)	ANVIL
76186	1800	(1)	STOCK CHUTE
76191	1805	(1)	STOCK CHUTE
		N/A	GUARD SPACER
73707	199-29	(1)	GUARD
76971	250S-M110/210	(1)	CASTING SPACER(FRONT)
		(1)	10-32 X 1 1/2" S.H.C.S.
		(2)	1/4-28 X 1/2" S.H.C.S.
		(2)	1/8 X 1" DOWEL
		(1)	5/16 X 3/4" SHOULDER SCREW
		(2)	1/4-28 X 3/4" S.S.S.
		(3)	1/4-20 X 1" S.H.C.S.
		(2)	1/4 X 1" DOWEL
		(1)	1/4-28 JAM NUT
		(4)	1/4-20 X 1/4" S.S.S.
		(30)	8-32 X 3/8" S.H.C.S.
		(2)	10-32 X 3/8" S.H.C.S.
		(2)	8-32 X 3/4" S.H.C.S.
		(2)	6-32 X 1/2" S.H.C.S.
		(2)	1/8 X 1/2" DOWEL

**NOTE: ITEMS MARKED WITH AN *
ARE HIGH WEAR ITEMS**

*ECC APPLICATOR
LEFT-RIGHT FEED
M111-R / M210*

10-32 X 3/8 S.H.C.S. (2)

STRIPPER
1600-81-1
73198

REAR GUIDE
500-112-3R
76973

8-32 X 3/8 F.H.C.S. (4)

FRONT GUIDE
1039R
75434

REAR GUIDE
500-112-3L
76972

RIGHT FEED PLATE
250-89R
76970

FRONT GUIDE
1039
75433

8-32 X 3/8 S.H.C.S. (10)

LEFT FEED PLATE
250-89
74044

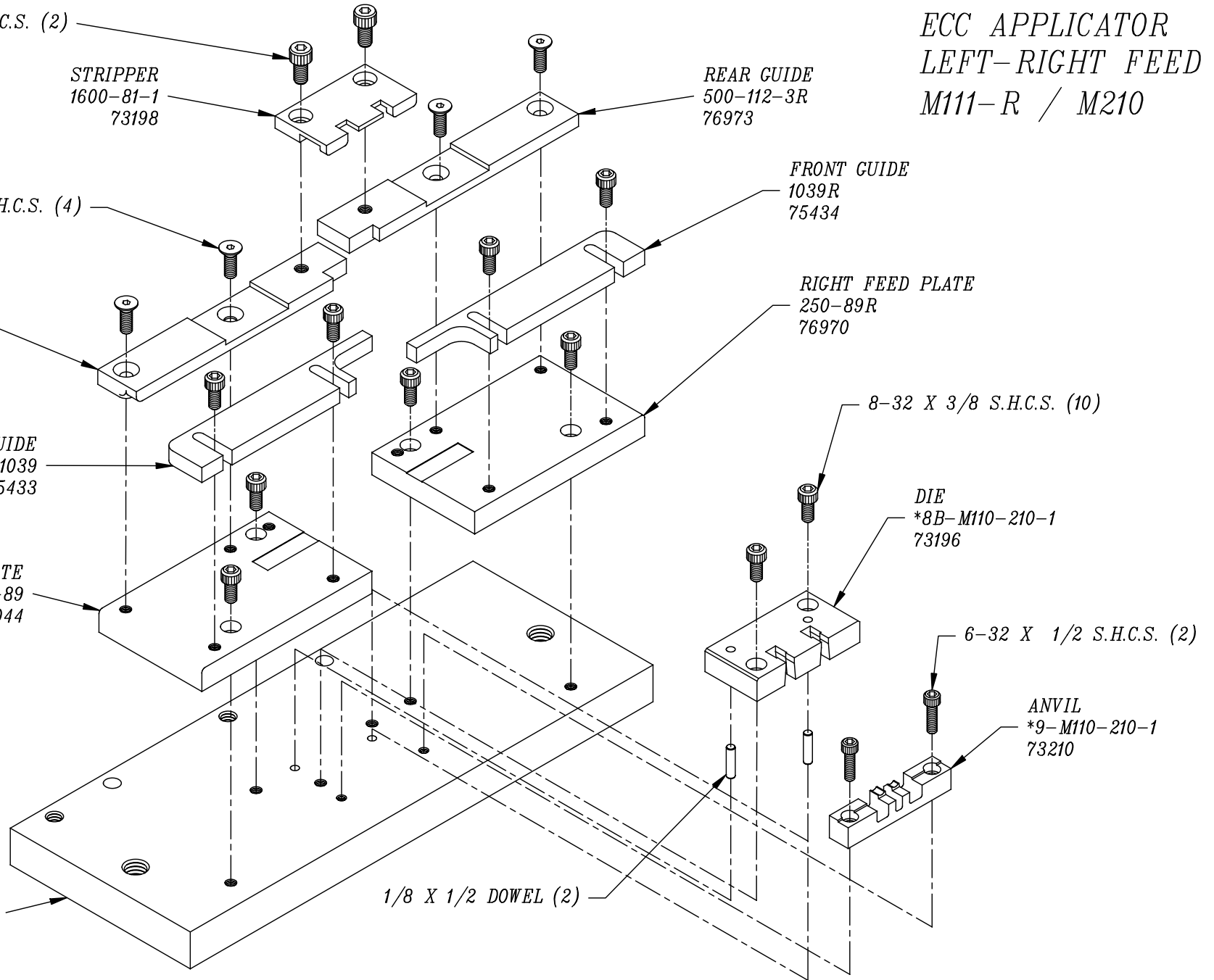
DIE
*8B-M110-210-1
73196

6-32 X 1/2 S.H.C.S. (2)

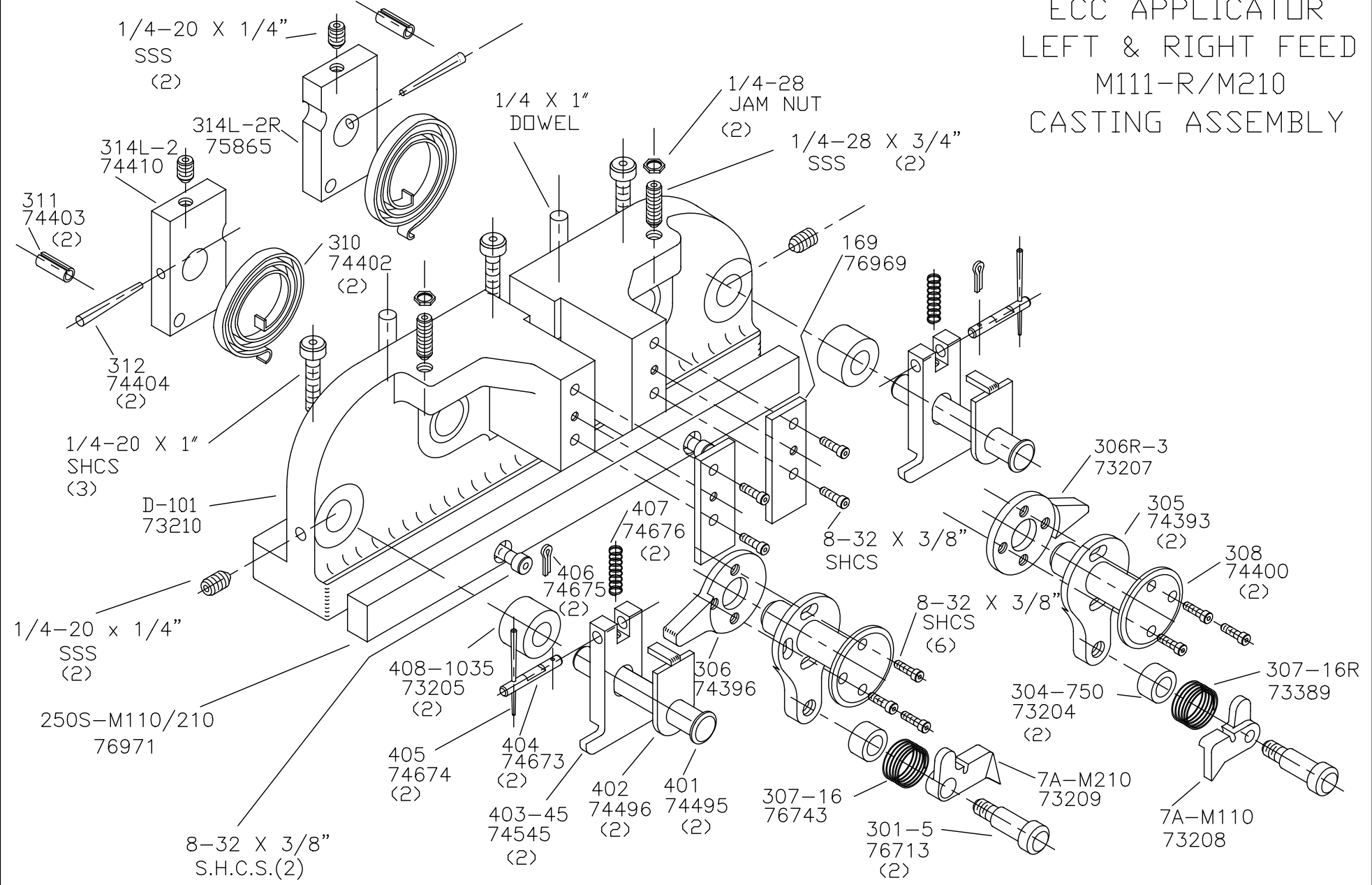
BASE PLATE
205
73938

1/8 X 1/2 DOWEL (2)

ANVIL
*9-M110-210-1
73210



ECC APPLICATOR
 LEFT & RIGHT FEED
 M11-R/M210
 CASTING ASSEMBLY



NEVER OPERATE APPLICATOR WITHOUT
SAFETY GUARD IN POSITION.

1805
76191

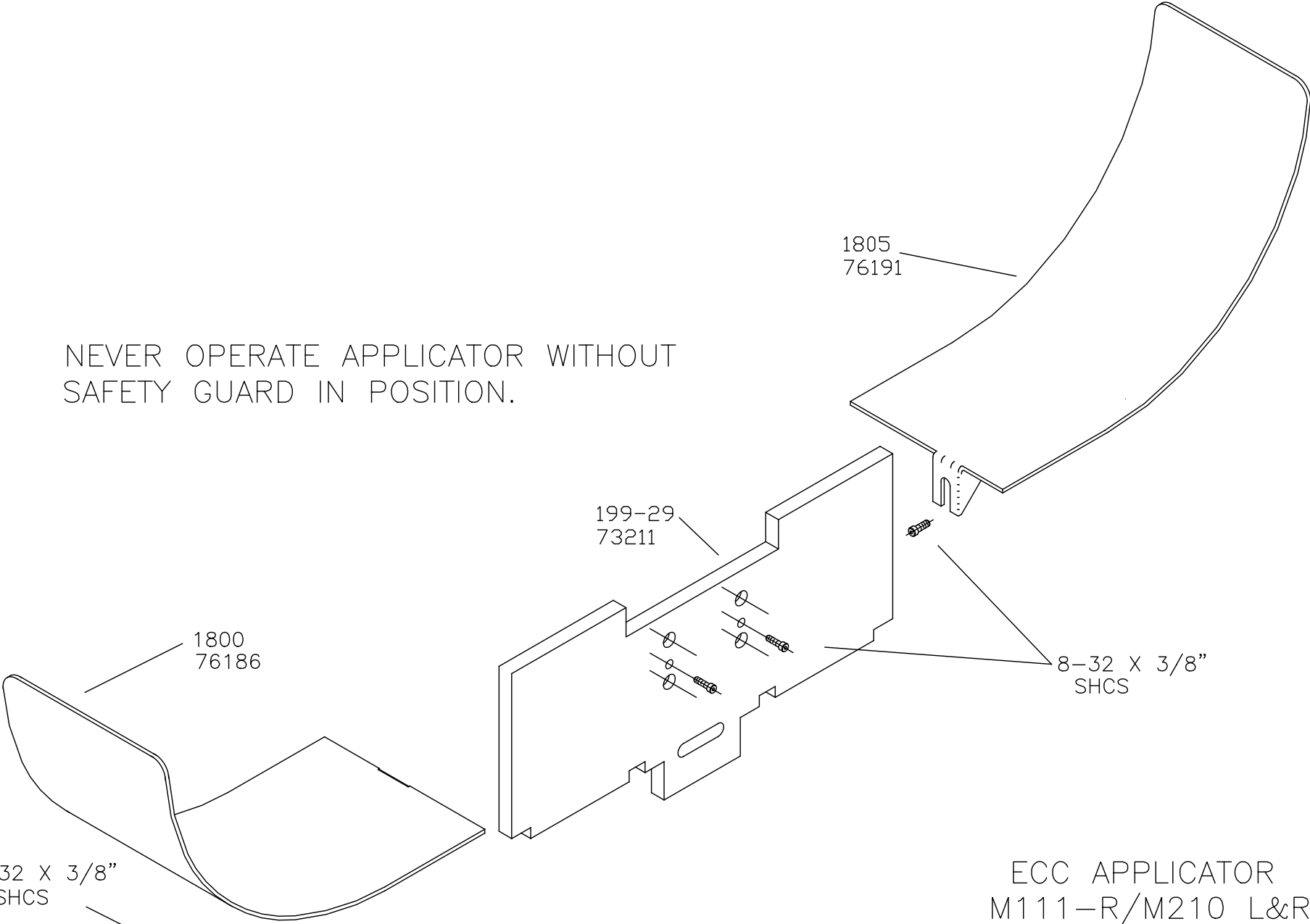
199-29
73211

1800
76186

8-32 X 3/8"
SHCS

8-32 X 3/8"
SHCS

ECC APPLICATOR
M111-R/M210 L&R
CHUTE AND GUARD



ECC APPLICATOR LEFT AND RIGHT FEED M111-R/M210 PLUNGER ASSEMBLY

