



**REFERENCE LIST:
S125N
ECC APPLICATOR
SIDE FEED
BILL OF MATERIAL NUMBER
79658**

**WARNING !
NEVER OPERATE
THIS OR ANY
APPLICATOR
WITHOUT SAFETY
GUARD IN POSITION.**

PART CODE	PART NUMBER	QUANTITY	DESCRIPTION
75496	1101-FS	(1)	PLUNGER
77918	1102-FS	(1)	FLOATING SHANK
75729	1156	(1)	CUT-OFF SCREW
75728	1155	(1)	ADJUST SCREW
75724	1150	(1)	INSULATION BLOCK
75710	1125	(1)	CAM ROLLER BRACKET
75719	1142	(1)	CAM ROLLER BEARING
73112	*12-S125-2	(1)	CUT-OFF PUNCH
73100	*13-S125-1	(1)	WIRE ROLLING TOOL
73075	*14-S120-1	(1)	INSULATION ROLLING TOOL
74410	314L-2	(1)	CAM
74403	311	(1)	SPRING PIN
74404	312	(1)	CAM TAPER PIN
74402	310	(1)	CAM RETURN SPRING
73899	101	(1)	TOP CASTING
76969	169	(2)	UNIVERSAL GIBS
74675	406	(1)	COTTER PIN
74676	407	(1)	BRAKE SPRING
77154	408-.812	(1)	BRAKE BUSHING
74674	405	(1)	TAPER PIN
74673	404	(1)	BRAKE CAM
74498	403-1	(1)	BRAKE BODY
74496	402	(1)	SPRING RETAINER
74495	401	(1)	BRAKE SHAFT
74396	306	(1)	FEED FINGER STOP
74393	305	(1)	FEED FINGER ARM
74400	308	(1)	FEED SHAFT
76894	304-.500	(1)	REAR SPACER
76721	307-7	(1)	SPRING
70090	7A-S125	(1)	FEED FINGER
		N/A	FRONT SPACER
76873	301-4	(1)	SHOULDER SCREW
73952	231	(2)	STRIPPER SPRING
73078	1611-1	(1)	WIRE STRIPPER / STOP
73955	235	(1)	GUIDE SPACER BLOCK
73120	518-1	(1)	REAR / RIGHT GUIDE

**NOTE: ITEMS MARKED WITH AN *
ARE HIGH WEAR ITEMS**



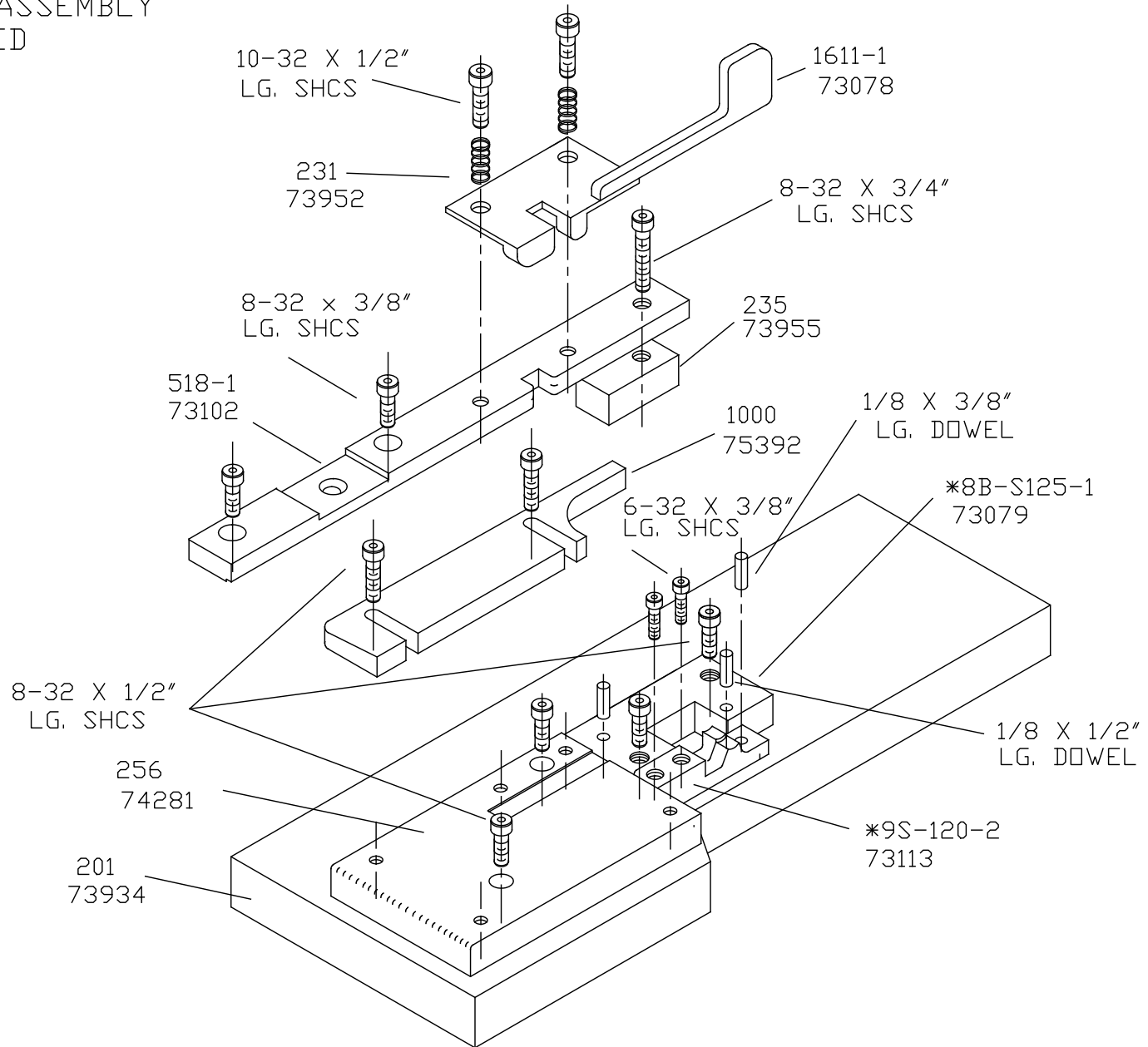
REFERENCE LIST:
S125N
ECC APPLICATOR
SIDE FEED
BILL OF MATERIAL NUMBER
79658

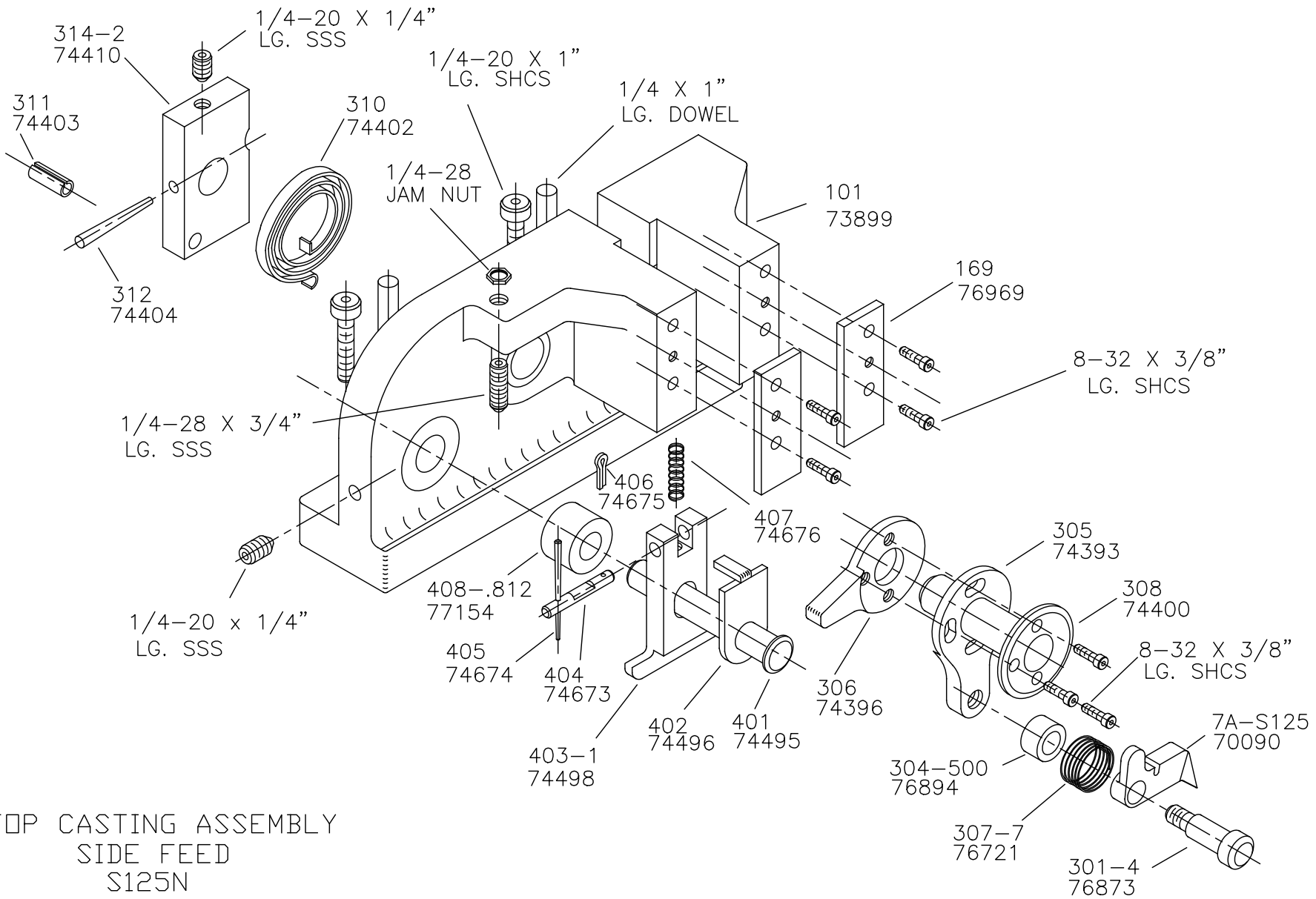
WARNING !
NEVER OPERATE
THIS OR ANY
APPLICATOR
WITHOUT SAFETY
GUARD IN POSITION.

PART CODE	PART NUMBER	QUANTITY	DESCRIPTION
75392	1000	(1)	FRONT / LEFT GUIDE
74281	256	(1)	DIE PLATE
73934	201	(1)	BASE PLATE
73079	*8B-S125-1	(1)	DIE
73113	*9S-120-2	(1)	ANVIL
76186	1800	(1)	STOCK CHUTE
		N/A	GUARD SPACER
73922	176	(1)	GUARD
		(1)	10-32 X 1 1/4" S.H.C.S.
		(1)	1/4-28 X 1/2" S.H.C.S.
		(2)	1/8 X 1" DOWEL
		(1)	5/16 X 3/4" SHOULDER SCREW
		(2)	1/4-28 X 3/4" S.S.S.
		(2)	1/4-20 X 1" S.H.C.S.
		(2)	1/4 X 1" DOWEL
		(1)	1/4-28 JAM NUT
		(1)	1/4-20 X 1/4" S.H.C.S.
		(10)	8-32 X 3/8" S.H.C.S.
		(3)	10-32 X 1/2" S.H.C.S.
		(1)	8-32 X 3/4" S.H.C.S.
		(2)	6-32 X 3/8" S.H.C.S.
		(6)	8-32 X 1/2" S.H.C.S.
		(1)	1/8 X 1/2" DOWEL
		(2)	1/8 X 3/8" DOWEL

NOTE: ITEMS MARKED WITH AN *
ARE HIGH WEAR ITEMS

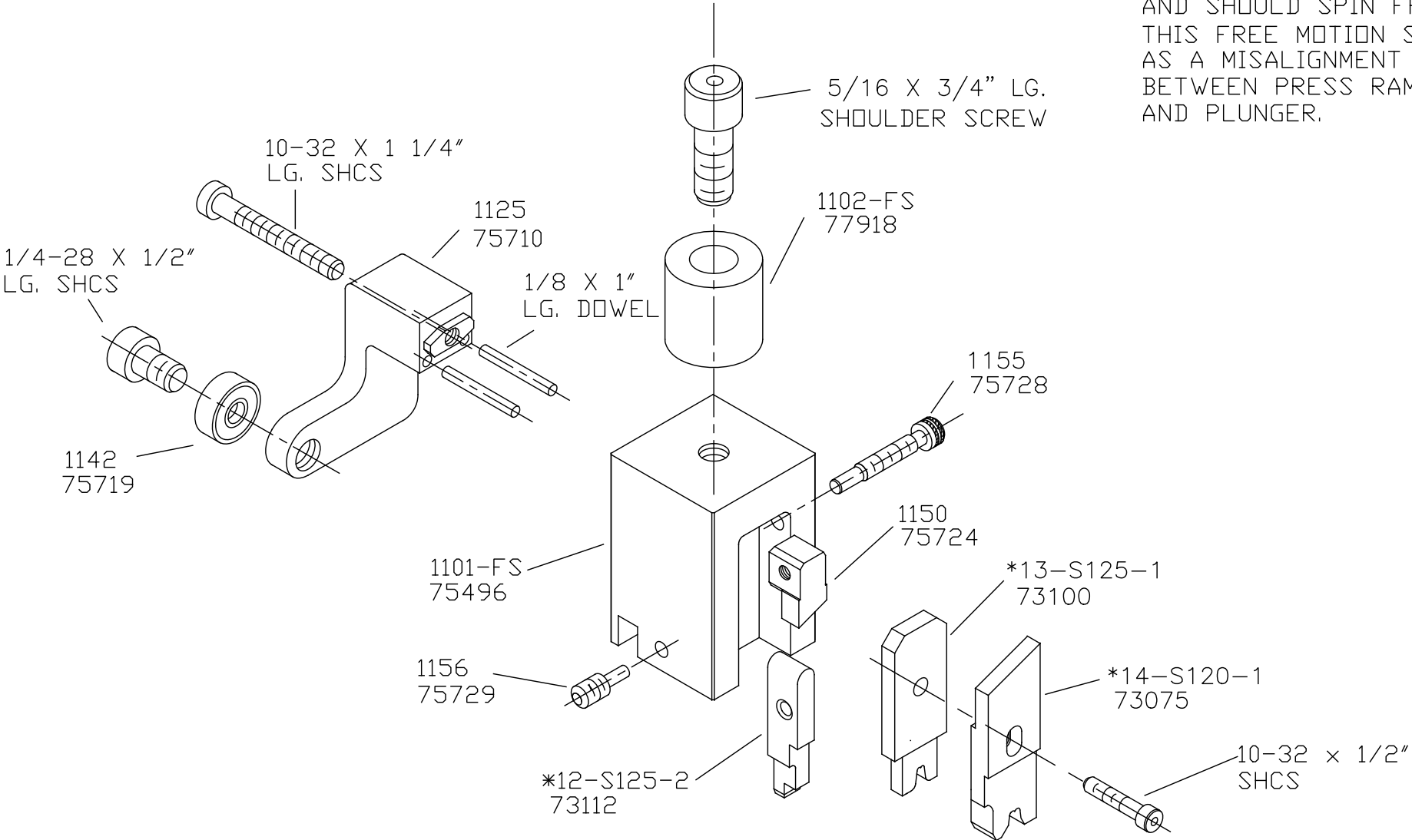
BASE PLATE ASSEMBLY
SIDE FEED
S125N





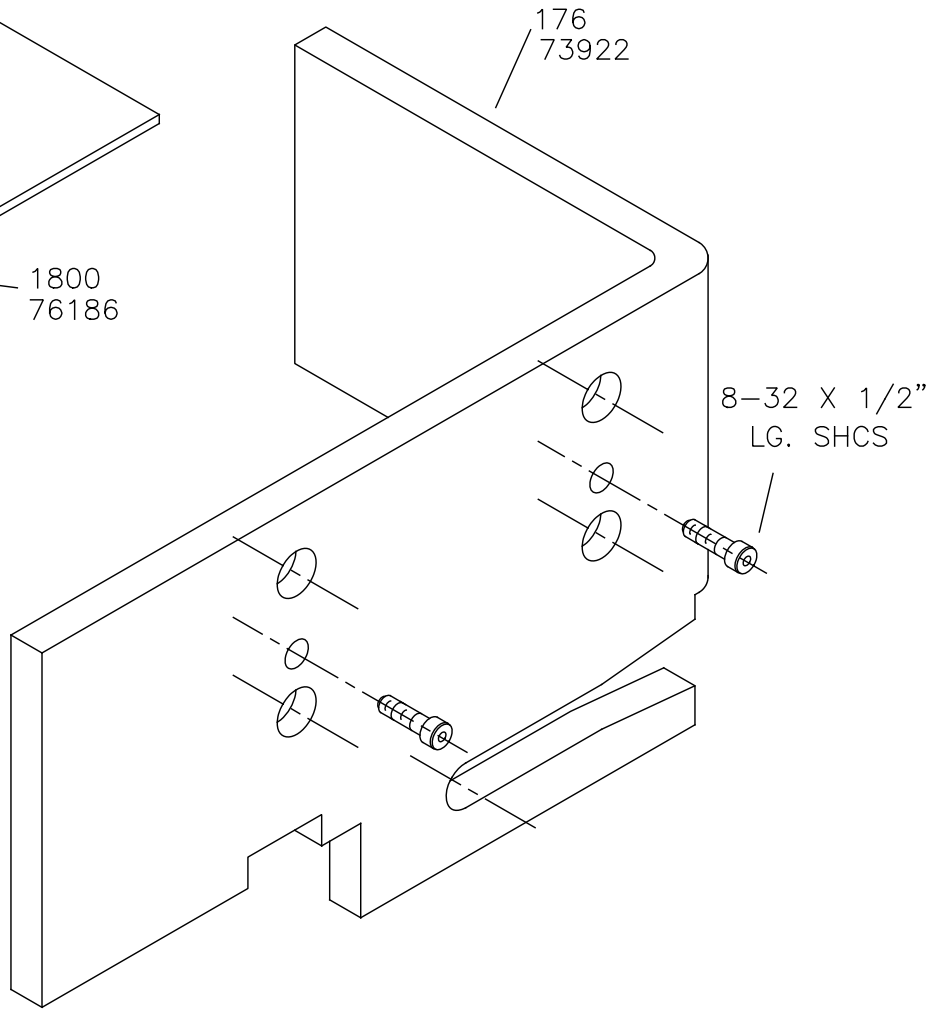
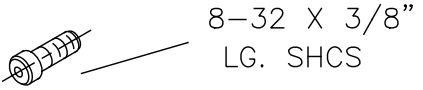
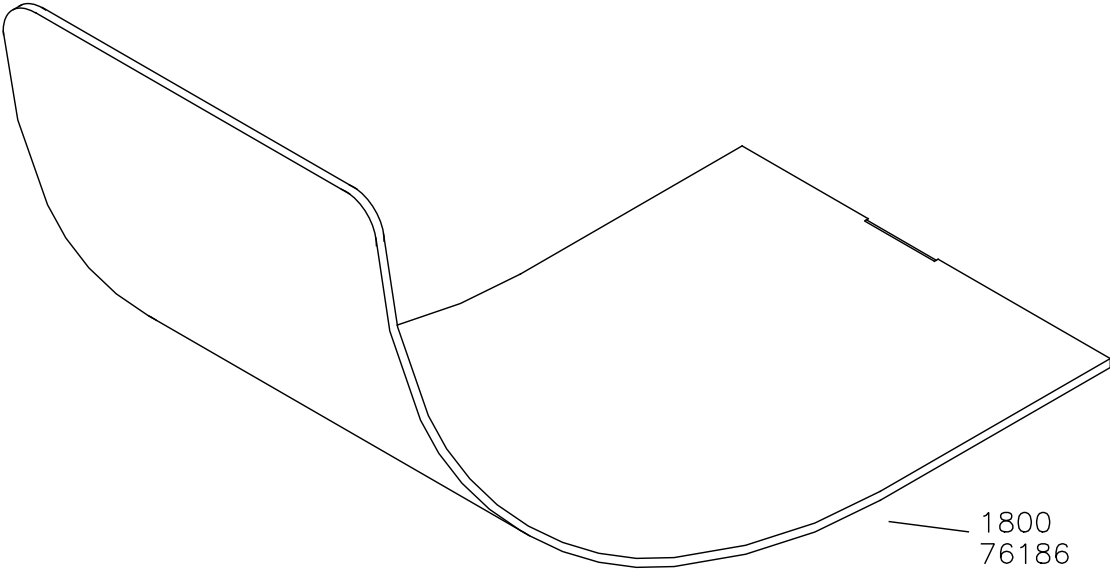
TOP CASTING ASSEMBLY
 SIDE FEED
 S125N

NOTE:
 SHANK SHOULD HAVE FREE
 PLAY IN THE VERTICAL AXIS
 AND SHOULD SPIN FREELY.
 THIS FREE MOTION SERVES
 AS A MISALIGNMENT COUPLING
 BETWEEN PRESS RAM
 AND PLUNGER.



PLUNGER ASSEMBLY
 SIDE FEED
 S125N

CHUTE AND GUARD S125N/S127N



NEVER OPERATE APPLICATOR WITHOUT
SAFETY GUARD IN POSITION.