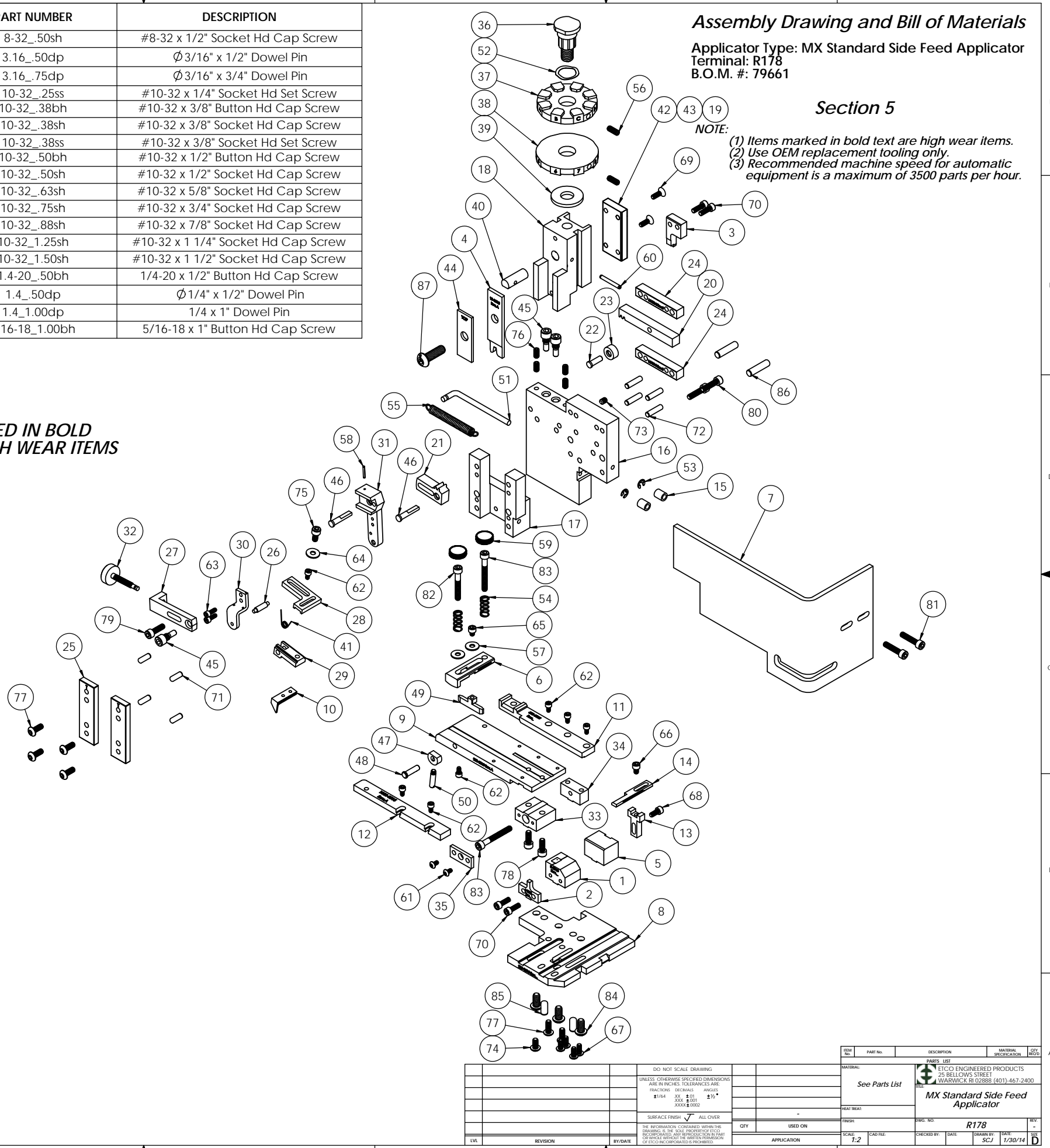


ITEM NO.	QTY.	Part_Code	PART NUMBER	DESCRIPTION
1	1	75524	8-3015	*Cut-off Die
2	1	75525	9-3015	Anvil
3	1	75527	12-3015	Cut-off Punch
4	1	75528	13-3015	Wire Rolling Tool
5	1	74802	26-3000	Backup Block
6	1	75732	26-3015	Lift Arm
7	1	75855	199-3000	Safety Guard
8	1	75727	200-3015	Baseplate
9	1	75731	250-3015	Feed Plate
10	1	75545	303-3014	Feed Finger
11	1	75730	500-3015	Rear Guide Rail
12	1	75929	1000-3015	Front Guide Rail
13	1	74803	1600B-3000	Adjustable Stripper Holder
14	1	77921	1600A-2000-3000	Adjustable Stripper Block
15	2	74491	GS-375	Guard Spacer
16	1	71029	MX2A-S	Mounting Frame
17	1	71030	MX2B-S	Plunger Frame
18	1	74343	MX3	Ram
19	1	74344	MX4-S	Cam (1 5/8" Up Stroke)
20	1	74438	MX5-S	Cam Rack
21	1	74346	MX6	Gear Arm
22	1	74347	MX7	Cam Pin
23	1	74350	MX8	Cam Roller
24	2	74351	MX10-S	Rack Pad
25	2	74352	MX11	Gib
26	1	74356	MX12	Feed Finger Pivot Pin
27	1	74360	MX13	Adjusting Bar
28	1	74361	MX14-S	Feed Finger Arm
29	1	74362	MX15-S	Feed Finger Guide
30	1	74364	MX16	Retainer
31	1	74371	MX18-S	Swing Arm
32	1	74376	MX25	Stroke Adjustment Screw
33	1	74384	MX29-S	Slide Support
34	1	74388	MX30-S	Support Anchor
35	1	74390	MX32-S	Support Cover
36	1	74407	MX33	Mounting Post
37	1	74408	MX34	Wire Crimp Dial Blank
38	1	74409	MX35	Insulation Dial
39	1	74411	MX36	Dial Spacer
40	1	74412	MX44	Locating Dowel
41	1	74415	MX45-S	Feed Finger Spring
42	1	74416	MX47-S	Cam (1 5/8" Down stroke)
43	1	74417	MX48-S	Cam (1 1/8" Up Stroke)
44	1	74418	MX49	Tool Retainer
45	3	74419	MX50	Safety Pivot Pin
46	2	74420	MX52	Pivot Pin
47	1	74425	MX84-S	Brake Cam
48	1	74426	MX85-S	Cam Pivot Pin
49	1	74428	MX86-S	Brake Shoe
50	1	74430	MX88-S	Lever
51	1	74614	MX90-S	Spring Bracket
52	1	72310	MX104	Wave Disc Spring
53	2	75083	Irving 3100-18	External Retaining Ring
54	2	77322	LC-045E-10-M	Spring
55	1	74611	LE-037CD-6	Extension Spring
56	2	70739	McMaster-Carr #3126A53	Spring Plunger
57	2	72519	McMaster Carr #98029A043	#8 Hardened Washer
58	1	74447	McMaster-Carr #98296A109	Expansion Pin (1/16 x 1/2")
59	2	73785	SPI 99-602-5	#10 Black Knurled Knob
60	1	62040	1.8_1.00rp	1/8" x 1" Roll Pin
61	2	63792	6-32_25bh	#6-32 x 1/4" Button Hd Cap Screw
62	7	63207	6-32_25sh	#6-32 x 1/4" Socket Hd Cap Screw
63	2	63209	6-32_38sh	#6-32 x 3/8" Socket Hd Cap Screw
64	1	63210	8fw	#8 Flatwasher
65	1	60265	8-32_19sh	#8-32 x 3/16" Socket Hd Cap Screw
66	1	63163	8-32_25sh	#8-32 x 1/4" Socket Hd Cap Screw
67	4	61472	8-32_38bh	#8-32 x 3/8" Button Hd Cap Screw
68	1	63161	8-32_38sh	#8-32 x 3/8" Socket Hd Cap Screw
69	2	63052	8-32_50fh	#8-32 x 1/2" Flat Hd Cap Screw

ITEM NO.	QTY.	Part_Code	PART NUMBER	DESCRIPTION
70	4	63164	8-32_50sh	#8-32 x 1/2" Socket Hd Cap Screw
71	4	63158	3.16_50dp	Ø 3/16" x 1/2" Dowel Pin
72	4	63470	3.16_75dp	Ø 3/16" x 3/4" Dowel Pin
73	2	63054	10-32_25ss	#10-32 x 1/4" Socket Hd Set Screw
74	1	78993	10-32_38bh	#10-32 x 3/8" Button Hd Cap Screw
75	1	70110	10-32_38sh	#10-32 x 3/8" Socket Hd Cap Screw
76	4	71626	10-32_38ss	#10-32 x 3/8" Socket Hd Set Screw
77	6	76501	10-32_50bh	#10-32 x 1/2" Button Hd Cap Screw
78	2	63056	10-32_50sh	#10-32 x 1/2" Socket Hd Cap Screw
79	1	70293	10-32_63sh	#10-32 x 5/8" Socket Hd Cap Screw
80	2	63532	10-32_75sh	#10-32 x 3/4" Socket Hd Cap Screw
81	2	70925	10-32_88sh	#10-32 x 7/8" Socket Hd Cap Screw
82	1	77396	10-32_1.25sh	#10-32 x 1 1/4" Socket Hd Cap Screw
83	2	63826	10-32_1.50sh	#10-32 x 1 1/2" Socket Hd Cap Screw
84	3	63632	1.4-20_50bh	1/4-20 x 1/2" Button Hd Cap Screw
85	2	63827	1.4_50dp	Ø 1/4" x 1/2" Dowel Pin
86	2	63510	1.4_1.00dp	1/4 x 1" Dowel Pin
87	1	63055	5.16-18_1.00bh	5/16-18 x 1" Button Hd Cap Screw

NOTE: ITEMS MARKED IN BOLD TEXT ARE HIGH WEAR ITEMS



ITEM NO.	PART NO.	DESCRIPTION	MATERIAL SPECIFICATION	QTY.	REVISION
		DO NOT SCALE DRAWING			
		UNLESS OTHERWISE SPECIFIED DIMENSIONS ARE IN INCHES. DECIMALS ARE FRACTIONS. DIMENSIONS ANGLES			
		1/16" XX 1/32" XXX 1/64" XXXX 1/8" XXXXX 1/4" XXXXXX 3/8" XXXXXX 1/2" XXXXXX			
		SURFACE FINISH: <input checked="" type="checkbox"/> ALL OVER			
		THE INFORMATION CONTAINED WITHIN THIS DRAWING IS THE SOLE PROPERTY OF ETICO. IT IS TO BE USED FOR THE MANUFACTURE OF VEHICLES WITHOUT THE WRITTEN PERMISSION OF ETICO INCORPORATED IS PROHIBITED.			
		REVISION	BY DATE	APPROVAL	
		SCALE	CAD FILE	CHECKED BY	DATE
		T:2		SCJ	1/30/14