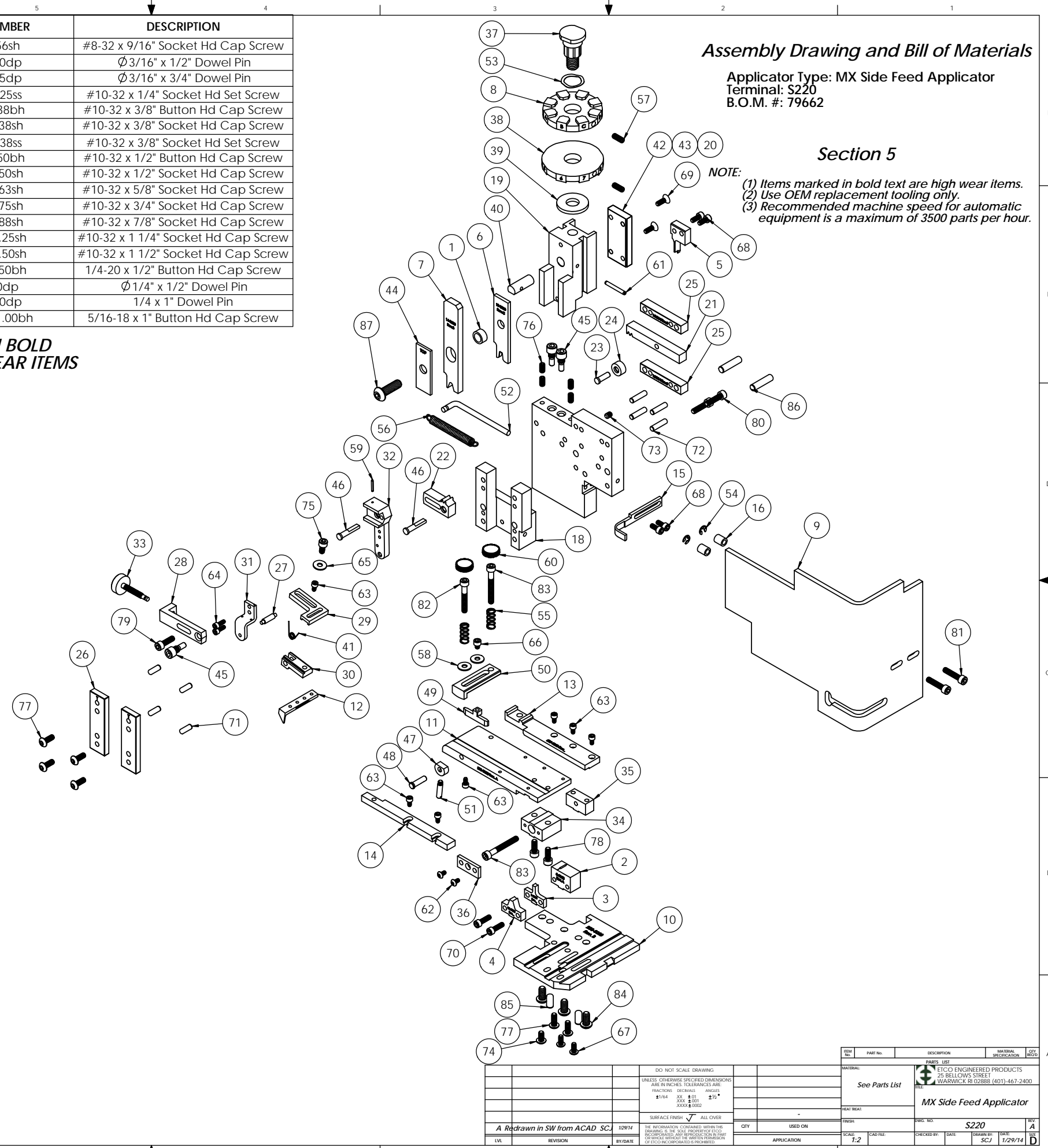


ITEM NO.	QTY.	Part_Code	PART NUMBER	DESCRIPTION	ITEM NO.	QTY.	Part_Code	PART NUMBER	DESCRIPTION
1	1	75903	252S-3001	IRT Spacer	70	2		8-32_.56sh	#8-32 x 9/16" Socket Hd Cap Screw
2	1	75789	8-3023	Cut-off Die	71	4	63158	3.16_.50dp	Ø3/16" x 1/2" Dowel Pin
3	1	75790	9-3023	Anvil	72	4	63470	3.16_.75dp	Ø3/16" x 3/4" Dowel Pin
4	1	75791	9A-3023	Insulation Anvil	73	2	63054	10-32_.25ss	#10-32 x 1/4" Socket Hd Set Screw
5	1	75792	12-3023	Cut-off Punch	74	1	78993	10-32_.38bh	#10-32 x 3/8" Button Hd Cap Screw
6	1	75794	13-3023	Wire Rolling Tool	75	1	70110	10-32_.38sh	#10-32 x 3/8" Socket Hd Cap Screw
7	1	75795	14-3023	Insulation Rolling Tool-.080-.100 dia.	76	4	71626	10-32_.38ss	#10-32 x 3/8" Socket Hd Set Screw
8	1	71989	34-3023	Wire Crimp Dial	77	6	76501	10-32_.50bh	#10-32 x 1/2" Button Hd Cap Screw
9	1	76403	199-3005	Safety Guard	78	2	63056	10-32_.50sh	#10-32 x 1/2" Socket Hd Cap Screw
10	1	75796	200-3023	Baseplate	79	1	70293	10-32_.63sh	#10-32 x 5/8" Socket Hd Cap Screw
11	1	75931	250-3023	Feed Plate	80	2	63532	10-32_.75sh	#10-32 x 3/4" Socket Hd Cap Screw
12	1	72890	303-3075	Feed Finger	81	2	70925	10-32_.88sh	#10-32 x 7/8" Socket Hd Cap Screw
13	1	75932	500-3023	Rear Guide Rail	82	1	77396	10-32_1.25sh	#10-32 x 1 1/4" Socket Hd Cap Screw
14	1	74840	MX28-1-S	Front Guide Rail	83	2	63826	10-32_1.50sh	#10-32 x 1 1/2" Socket Hd Cap Screw
15	1	75939	1600-3023	Stripper / Wire Stop	84	3	63632	1.4-20_.50bh	1/4-20 x 1/2" Button Hd Cap Screw
16	2	74491	GS-375	Guard Spacer	85	2	63827	1.4_.50dp	Ø1/4" x 1/2" Dowel Pin
17	1	71029	MX2A-S	Mounting Frame	86	2	63510	1.4_1.00dp	1/4 x 1" Dowel Pin
18	1	71030	MX2B-S	Plunger Frame	87	1	63055	5.16-18_1.00bh	5/16-18 x 1" Button Hd Cap Screw
19	1	74343	MX3	Ram					
20	1	74344	MX4-S	Cam (1 5/8" Up Stroke)					
21	1	74438	MX5-S	Cam Rack					
22	1	74346	MX6	Gear Arm					
23	1	74347	MX7	Cam Pin					
24	1	74350	MX8	Cam Roller					
25	2	74351	MX10-S	Rack Pad					
26	2	74352	MX11	Gib					
27	1	74356	MX12	Feed Finger Pivot Pin					
28	1	74360	MX13	Adjusting Bar					
29	1	74361	MX14-S	Feed Finger Arm					
30	1	74362	MX15-S	Feed Finger Guide					
31	1	74364	MX16	Retainer					
32	1	74371	MX18-S	Swing Arm					
33	1	74376	MX25	Stroke Adjustment Screw					
34	1	74384	MX29-S	Slide Support					
35	1	74388	MX30-S	Support Anchor					
36	1	74390	MX32-S	Support Cover					
37	1	74407	MX33	Mounting Post					
38	1	74409	MX35	Insulation Dial					
39	1	74411	MX36	Dial Spacer					
40	1	74412	MX44	Locating Dowel					
41	1	74415	MX45-S	Feed Finger Spring					
42	1	74416	MX47-S	Cam (1 5/8" Down stroke)					
43	1	74417	MX48-S	Cam (1 1/8" Up Stroke)					
44	1	74418	MX49	Tool Retainer					
45	3	74419	MX50	Safety Pivot Pin					
46	2	74420	MX52	Pivot Pin					
47	1	74425	MX84-S	Brake Cam					
48	1	74426	MX85-S	Cam Pivot Pin					
49	1	74428	MX86-S	Brake Shoe					
50	1	75178	MX87-S	Lift Arm					
51	1	74430	MX88-S	Lever					
52	1	74614	MX90-S	Spring Bracket					
53	1	72310	MX104	Wave Disc Spring					
54	2	75083	Irving 3100-18	External Retaining Ring					
55	2	77322	LC-045E-10-M	Spring					
56	1	74611	LE-037CD-6	Extension Spring					
57	2	70739	McMaster-Carr #3126A53	Spring Plunger					
58	2	72519	McMaster Carr #98029A043	#8 Hardened Washer					
59	1	74447	McMaster-Carr #98296A109	Expansion Pin (1/16 x 1/2")					
60	2	73785	SPI 99-602-5	#10 Black Knurled Knob					
61	1	62040	1.8_1.00rp	1/8" x 1" Roll Pin					
62	2	63792	6-32_.25bh	#6-32 x 1/4" Button Hd Cap Screw					
63	7	63207	6-32_.25sh	#6-32 x 1/4" Socket Hd Cap Screw					
64	2	63209	6-32_.38sh	#6-32 x 3/8" Socket Hd Cap Screw					
65	1	63210	8fw	#8 Flatwasher					
66	1	60265	8-32_.19sh	#8-32 x 3/16" Socket Hd Cap Screw					
67	2	61472	8-32_.38bh	#8-32 x 3/8" Button Hd Cap Screw					
68	4	63161	8-32_.38sh	#8-32 x 3/8" Socket Hd Cap Screw					
69	2	63052	8-32_.50fh	#8-32 x 1/2" Flat Hd Cap Screw					

NOTE: ITEMS MARKED IN BOLD TEXT ARE HIGH WEAR ITEMS



Assembly Drawing and Bill of Materials

Applicator Type: MX Side Feed Applicator
Terminal: S220
B.O.M. #: 79662

ITEM NO.	PART NO.	DESCRIPTION	MATERIAL SPECIFICATION	QTY.	REVISION
		DO NOT SCALE DRAWING			
		UNLESS OTHERWISE SPECIFIED DIMENSIONS ARE IN INCHES. TOLERANCES ARE:			
		FRACTIONS: DECIMALS: ANGLES:			
		±1/64 ±.01 ±15°			
		XXXX ±.002			
		SURFACE FINISH: ✓ ALL OVER			
		THE INFORMATION CONTAINED WITHIN THIS DRAWING IS THE SOLE PROPERTY OF ETICO. NO PART OF THIS DRAWING OR THE INFORMATION CONTAINED HEREIN IS TO BE REPRODUCED OR TRANSMITTED IN ANY FORM OR BY ANY MEANS, ELECTRONIC OR MECHANICAL, INCLUDING PHOTOCOPYING, RECORDING, OR BY ANY INFORMATION STORAGE AND RETRIEVAL SYSTEM, WITHOUT THE WRITTEN PERMISSION OF ETICO ENGINEERED PRODUCTS.			
		DATE: 1/29/14			
		SCALE: 1:2			
		CAD FILE:			
		CHECKED BY:			
		DATE:			
		DRAWN BY:			
		DATE:			
		APPLICATION:			
		FIG. NO. S220			
		REV. A			
		DATE: 1/29/14			