



**REFERENCE LIST:
R378, R379
ECC APPLICATOR
SIDE FEED
BILL OF MATERIAL NUMBER
79682**

**WARNING !
NEVER OPERATE
THIS OR ANY
APPLICATOR
WITHOUT SAFETY
GUARD IN POSITION.**

| PART CODE | PART NUMBER | QUANTITY | DESCRIPTION |
|-----------|---------------|----------|-------------------------|
| 75621 | 11R379 | (1) | PLUNGER |
| 77918 | 1102-FS | (1) | FLOATING SHANK |
| | | N/A | ADJUST SCREW |
| | | N/A | INSULATION BLOCK |
| | | N/A | CUT-OFF PUNCH DRIVER |
| 71949 | *12-R378/R379 | (1) | CUT-OFF PUNCH |
| 72775 | *13-R378/R379 | (1) | WIRE ROLLING TOOL |
| | | N/A | TOOL RETAINER |
| | | N/A | INSULATION ROLLING TOOL |
| 75710 | 1125 | (1) | CAM ROLLER BRACKET |
| 75719 | 1142 | (1) | CAM ROLLER BEARING |
| 74414 | 314-3 | (1) | CAM BODY |
| 77106 | 312-1 | (1) | CAM TAPER PIN |
| 74402 | 310 | (1) | CLOCK SPRING |
| 73706 | 311-1 | (1) | ROLL PIN |
| 76969 | 169 | (2) | UNIVERSAL GIB |
| 73952 | 231 | (1) | STRIPPER SPRING |
| 76103 | 1719 | (1) | STRIPPER |
| 73899 | 101 | (1) | TOP CASTING |
| 73663 | 408-625 | (1) | BRAKE BUSHING |
| 74676 | 407 | (1) | SPRING |
| 74675 | 406 | (1) | COTTER PIN |
| 74674 | 405 | (1) | TAPER PIN |
| 74673 | 404 | (1) | BRAKE CAM |
| 74545 | 403-45 | (1) | BRAKE BODY |
| 74496 | 402 | (1) | BRAKE SPRING RETAINER |
| 74495 | 401 | (1) | BRAKE SHAFT |
| 74396 | 306 | (1) | FEED FINGER STOP |
| 74393 | 305 | (1) | FEED FINGER ARM |
| 78152 | 304-250 | (1) | REAR SPACER |
| 74400 | 308 | (1) | FEED SHAFT |
| 76787 | 307-4 | (1) | SPRING |
| 70103 | 7A-R378/R379 | (1) | FEED FINGER |
| | | N/A | FRONT SPACER |
| 76919 | 301-2 | (1) | SHOULDER SCREW |
| 75665 | 633 | (1) | RIGHT GUIDE |
| 75396 | 1004 | (1) | LEFT GUIDE |

**NOTE: ITEMS MARKED WITH AN *
ARE HIGH WEAR ITEMS**

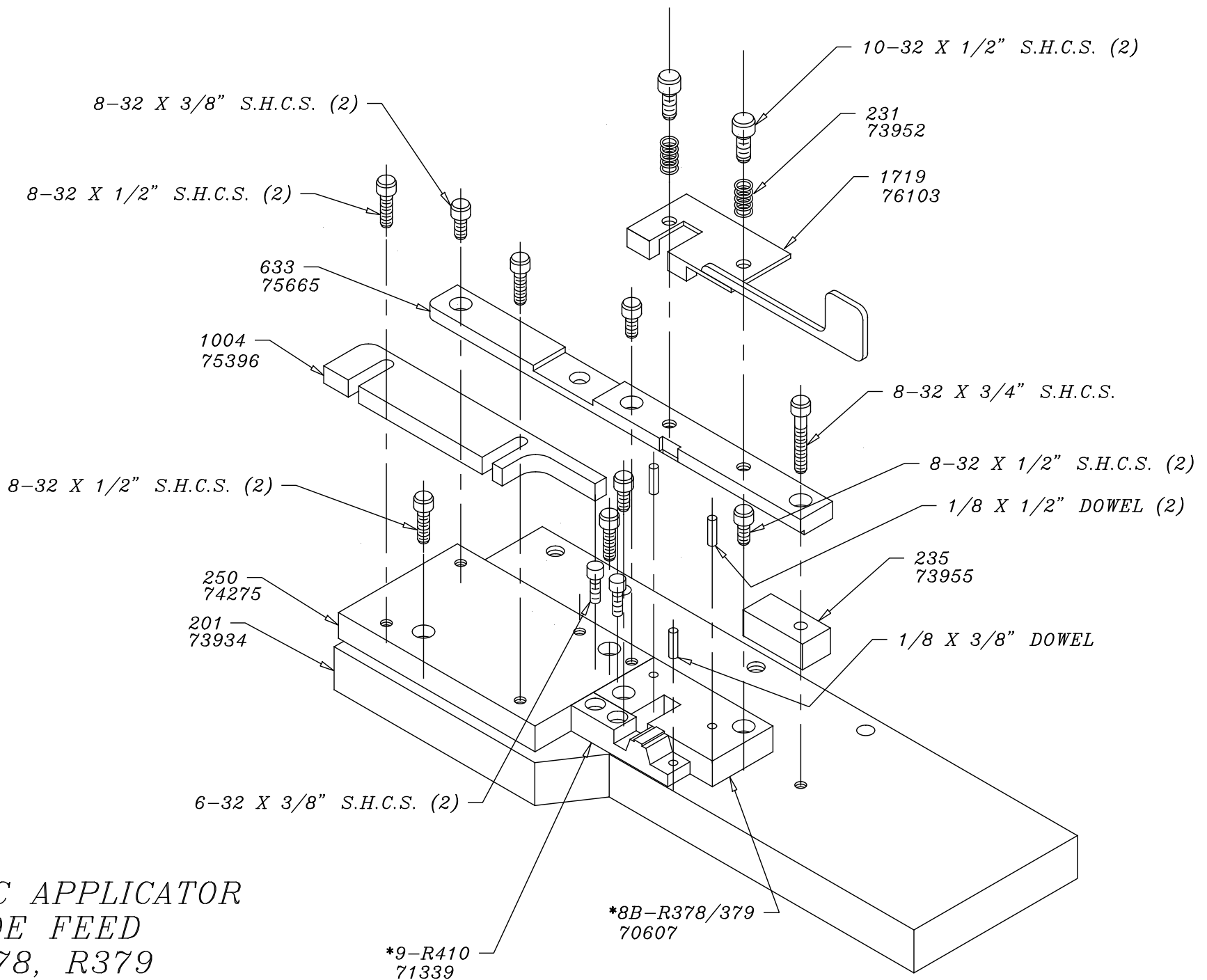


REFERENCE LIST:
 R378, R379
 ECC APPLICATOR
 SIDE FEED
 BILL OF MATERIAL NUMBER
 79682

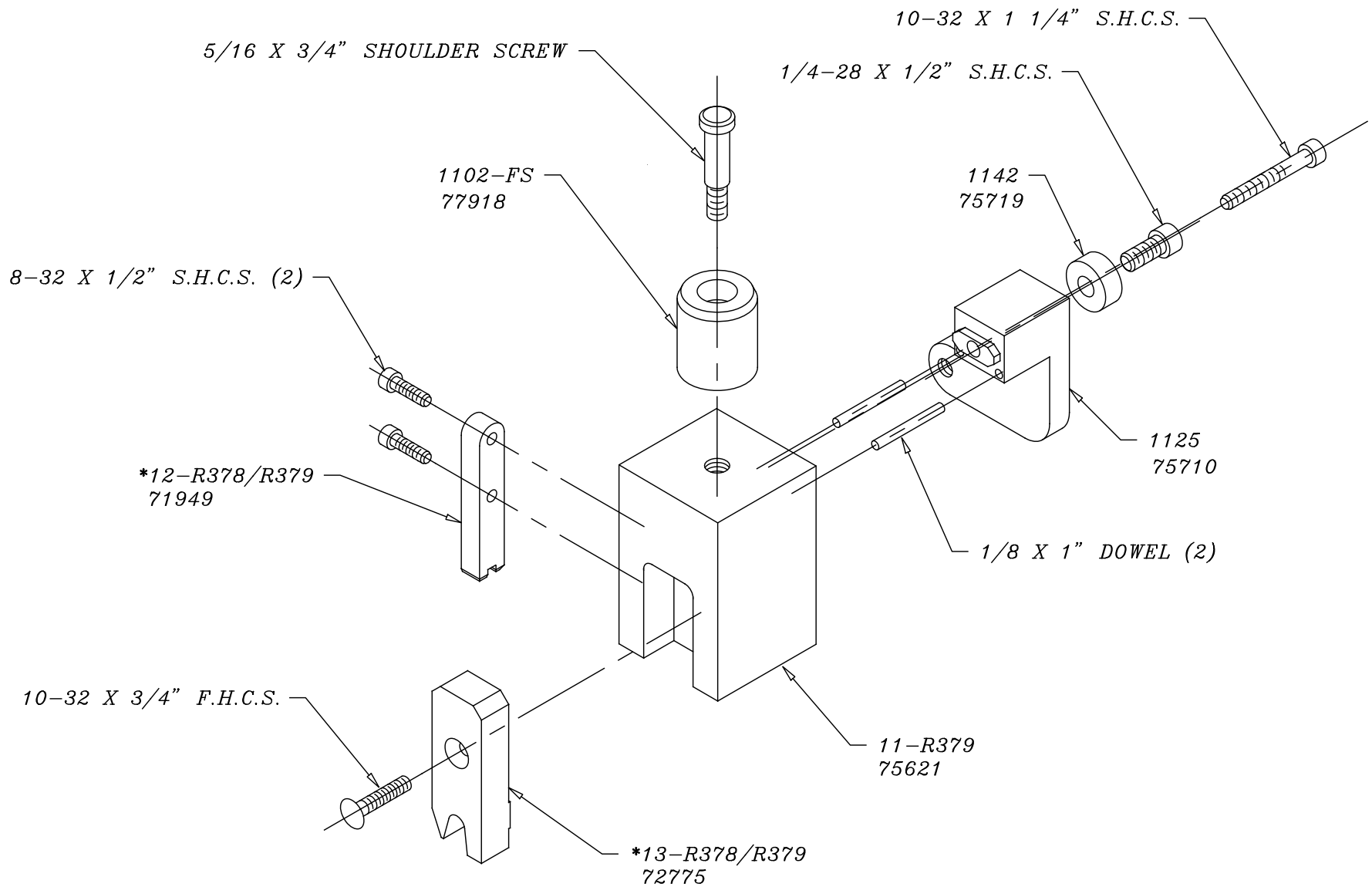
WARNING !
NEVER OPERATE
THIS OR ANY
APPLICATOR
WITHOUT SAFETY
GUARD IN POSITION.

| PART CODE | PART NUMBER | QUANTITY | DESCRIPTION |
|-----------|---------------|----------|----------------------------|
| 73955 | 235 | (1) | GUIDE SPACER BLOCK |
| 74275 | 250 | (1) | DIE PLATE |
| 70607 | *8B-R378/R379 | (1) | DIE |
| 71339 | *9-R410 | (1) | ANVIL |
| 73934 | 201 | (1) | BASE PLATE |
| | | N/A | GUARD SPACER |
| 73925 | 180 | (1) | GUARD |
| 76186 | 1800 | (1) | STOCK CHUTE |
| | | | |
| | | (2) | 6-32 X 3/8" S.H.C.S. |
| | | (12) | 8-32 X 3/8" S.H.C.S. |
| | | (8) | 8-32 X 1/2" S.H.C.S. |
| | | (1) | 8-32 X 3/4" S.H.C.S. |
| | | (2) | 10-32 X 1/2" S.H.C.S. |
| | | (1) | 10-32 X 3/4" FLAT HD.C.S. |
| | | (1) | 10-32 X 1 1/4" S.H.C.S. |
| | | (1) | 1/8 X 3/8" DOWEL |
| | | (2) | 1/8 X 1/2" DOWEL |
| | | (2) | 1/8 X 1" DOWEL |
| | | (2) | 1/4-20 X 1/4" S.S.S. |
| | | (1) | 1/4-28 X 1/2" S.H.C.S. |
| | | (1) | 1/4-28 JAM NUT |
| | | (2) | 1/4 X 1" DOWEL |
| | | (2) | 1/4-20 X 1" S.H.C.S. |
| | | (1) | 5/16 X 3/4" SHOULDER SCREW |
| | | | |
| | | | |
| | | | |
| | | | |
| | | | |
| | | | |
| | | | |
| | | | |

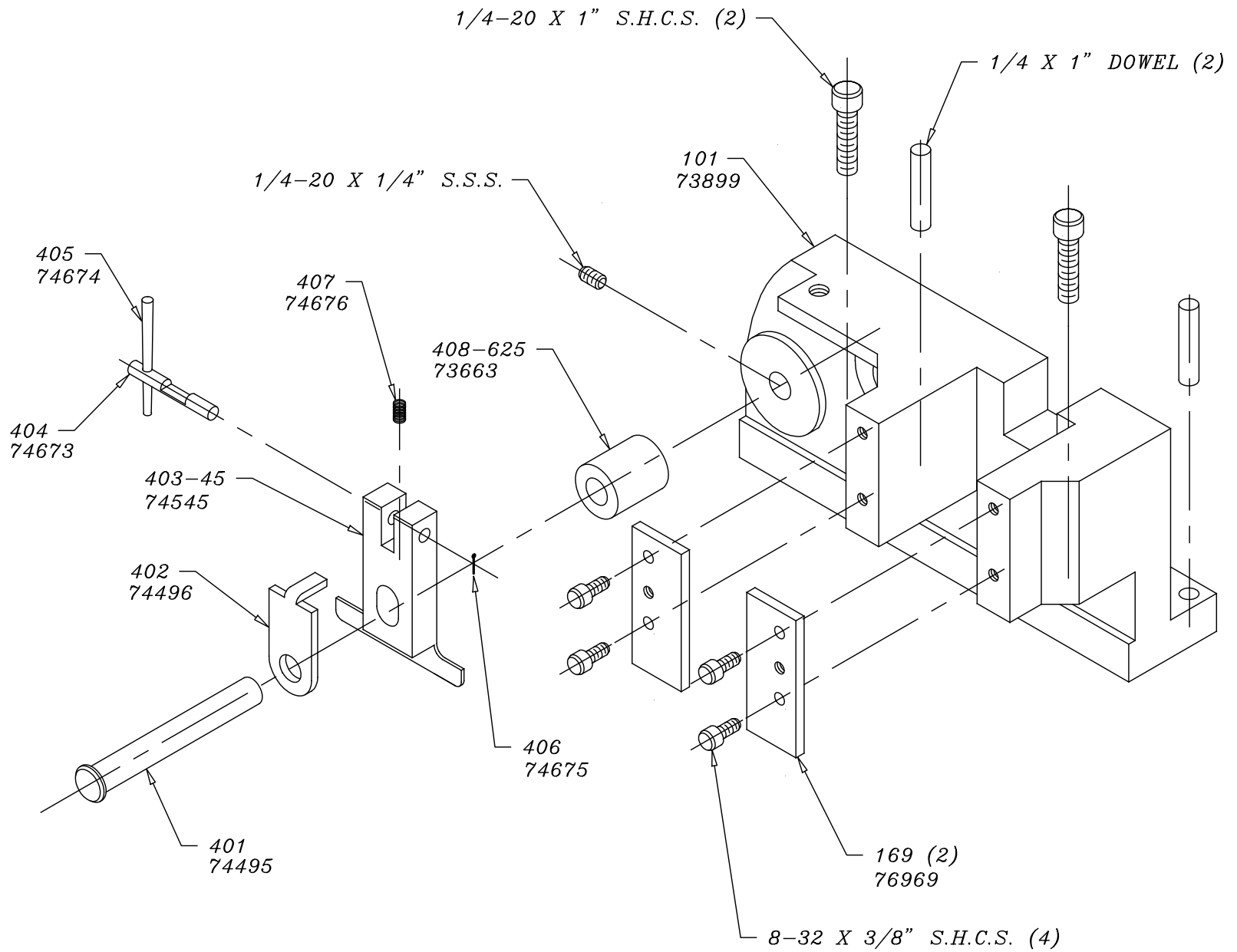
**NOTE: ITEMS MARKED WITH AN *
 ARE HIGH WEAR ITEMS**



ECC APPLICATOR
 SIDE FEED
 R378, R379

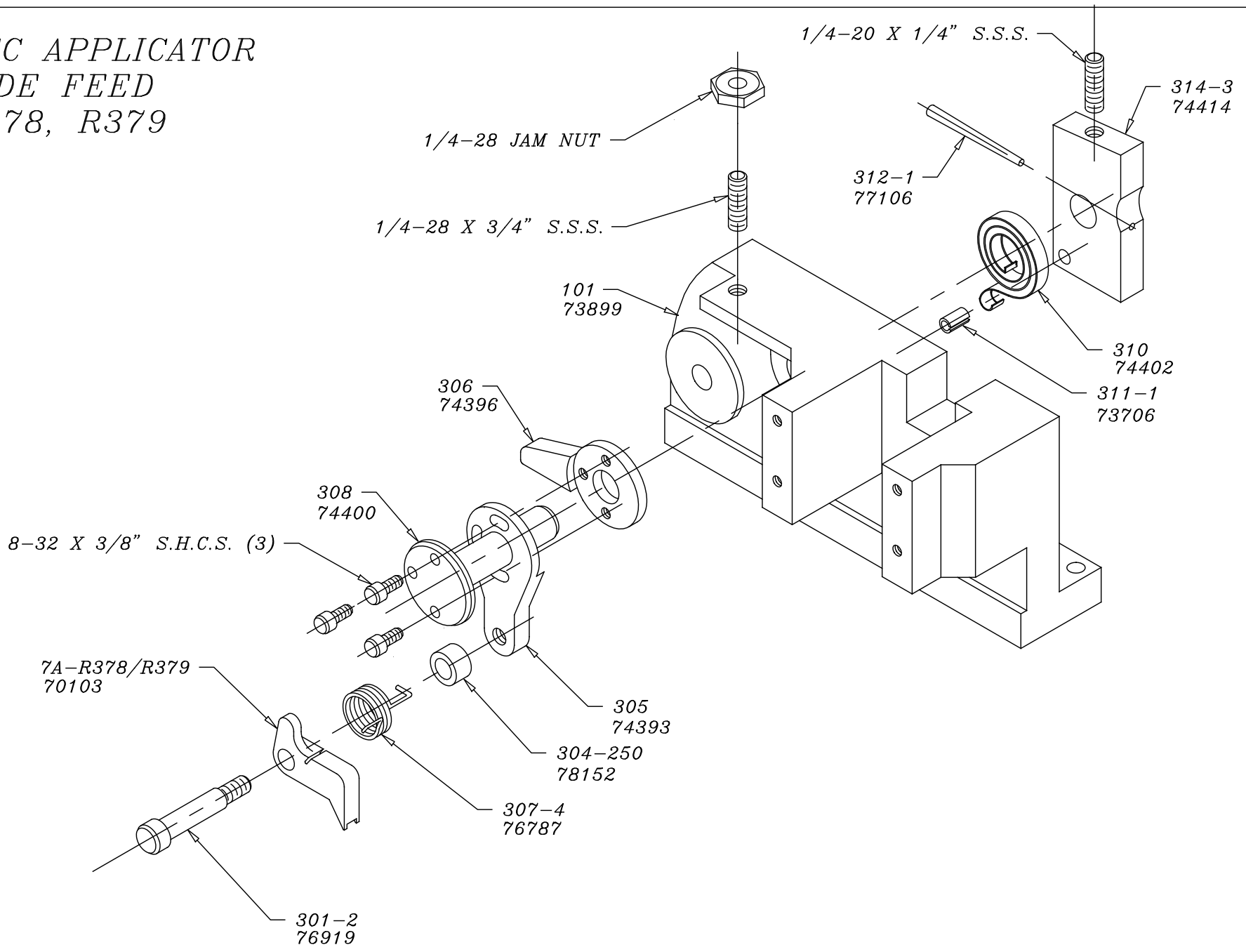


*ECC APPLICATOR
SIDE FEED
R378, R379*



ECC APPLICATOR
 SIDE FEED
 R378, R379

*ECC APPLICATOR
SIDE FEED
R378, R379*



*ECC APPLICATOR
SIDE FEED
R378, R379*

8-32 X 3/8" S.H.C.S.

1800
76186

180
73925

8-32 X 3/8" S.H.C.S. (2)

