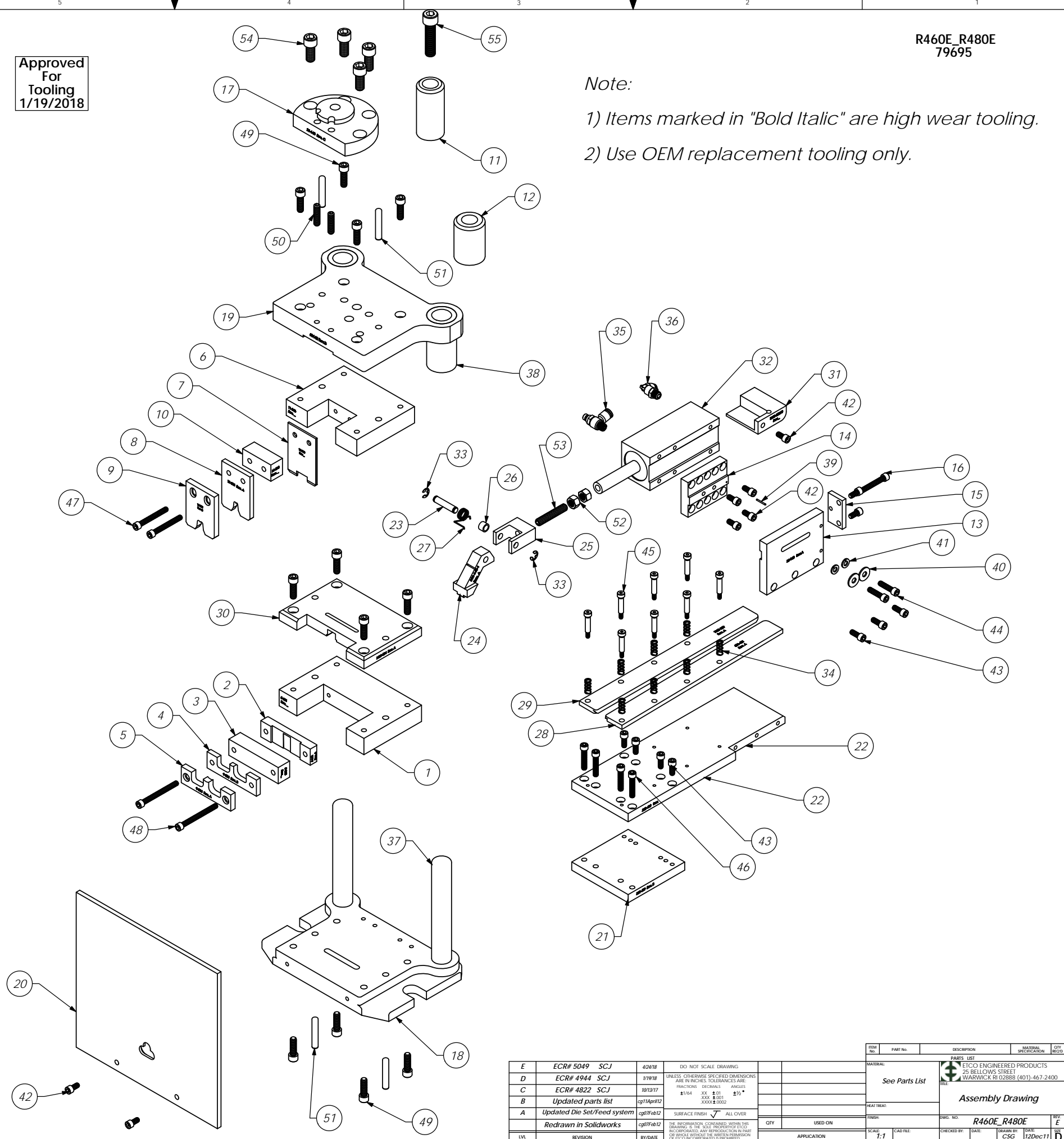


Parts List				
Item No.	Part Code	Part No.	Description	QTY.
1	75589	8-361	Die Holder	1
2	75582	8-362	Rear Cut-Off Die	1
3	75590	8-363	Front Cut-Off Die	1
4	75577	9-333	Conductor Anvil	1
5	75578	9-334	Insulation Anvil	1
6	75584	11-246	Punch Holder	1
7	75591	12-278	Cut-off Punch	1
8	75690	13-313	Wire Rolling Tool	1
9	69984	14-085	Insulation Rolling Tool	1
10	75583	16-098	Spacer	1
11	100162	26-R553E	Shank - Niagra Press	1
12	100478	26-R553E-1	Kenco 5-ton Shank	1
13	75197	26-168	Air Cylinder Support	1
14	62007	26-169-1	Air Cylinder Adjustment Plate	1
15	75199	26-170	Feed Adjust Plate	1
16	69947	26-171	Feed Adjusting Screw	1
17	62346	26-648	Adapter for Tox Press	1
18	63437	30-031-1	Die Set Base	1
19	63442	31-031-1	Die Set Hat	1
20	63441	199-41-1	Safety Guard	1
21	75196	250-409	Feed Support	1
22	75225	250-410	Feed Plate	1
23	75210	301-10	Feed Pivot Pin	1
24	63439	303-140-1	Feed Finger	1
25	62009	303A-133-1	Clevis	1
26	75209	304-.310-1	Feed Finger Spacer	1
27	75211	307-80	Feed Finger Spring	1
28	75586	500-421	Guide Rail	1
29	75585	1000-289	Guide Rail	1
30	75588	1600-304	Stripper	1
31	100061	1800-82300	Chute	1
32	62535	Fabco #SQ221 x 3.00 MR-K-C4 (Modified)	Feed Cylinder	1
33	63484	Irving 3100-31	Retaining Ring	2
34	77322	LC-045E-10-M	Spring	8
35	76268	Pisco JSC250-N1AU	Speed Controller	1
36	72352	Pisco PL250-N1U	Ø1/4" x 1/8-NPT Elbow Fitting	1
37	62347	Stamp One 5-0828-1	Guide Pin	2
38	62348	Stamp One 6-08-3	Guide Bushing	2
39	63486	1.16_.63rp	1/16" x 5/8" Roll Pin	1
40	63488	1.4fw hardened	1/4" Flatwasher (Hardened)	2
41	63489	1.4lw	1/4" Lockwasher	2
42	78328	1.4-20_.50sh	1/4-20 x 1/2" Socket Hd Cap Screw	9
43	63492	1.4-20_.63sh	1/4-20 x 5/8" Socket Hd Cap Screw	7
44	63168	1.4-20_1.00sh	1/4-20 x 1" Socket Hd Cap Screw	2
45	63491	1.4_1.00shss	1/4 x 1" Shoulder Screw	8
46	71482	1.4-20_1.25sh	1/4-20 x 1 1/4" Socket Hd Cap Screw	4
47	63498	1.4-20_2.00sh	1/4-20 x 2" Socket Hd Cap Screw	2
48	63496	1.4-20_2.50sh	1/4-20 x 2 1/2" Socket Hd Cap Screw	2
49	63495	5.16-18_1.00sh	5/16-18 x 1" Socket Hd Cap Screw	12
50	63560	5.16-18_1.25sf	5/16-18 x 1 1/4" Socket Hd Set Screw	2
51	63493	5.16_1.75dp	5/16" x 1 3/4" Dowel Pin	4
52	63485	3.8-24hn	3/8-24 Hex Nut	2
53	63490	3.8-24_2.00ssf	3/8-24 x 2" Soc Set Screw	1
54	63494	7.16-14_1.00sh	7/16-14 x 1" Socket Hd Cap Screw	4
55		1.2-20_2.00sh	1/2-20 x 2.00 Socket Hd Cap Screw	1

Approved For Tooling 1/19/2018



R460E\_R480E 79695

Note:  
 1) Items marked in "Bold Italic" are high wear tooling.  
 2) Use OEM replacement tooling only.

REV	DATE	BY/DAE	APP	DESCRIPTION	SCALE	DATE	BY/DAE	APP
E	4/24/18	CSG		DO NOT SCALE DRAWING				
D	1/19/18	CSG		UNLESS OTHERWISE SPECIFIED DIMENSIONS ARE IN INCHES TOLERANCES ARE FRACTIONS DECIMALS ANGLES				
C	10/13/17	CSG		±.004 .001 .015 ±.5°				
B	02/14/16	CSG		Updated parts list				
A	09/07/12	CSG		Updated Die Set/Feed system				
				Redrawn in Solidworks				

REV	DATE	BY/DAE	APP	DESCRIPTION	SCALE	DATE	BY/DAE	APP
				See Parts List				
				Assembly Drawing				
				R460E_R480E				
				12Dec11				