



REFERENCE LIST:
D150E
ECC APPLICATOR
REAR FEED
BILL OF MATERIAL NUMBER
79712

WARNING !
NEVER OPERATE
THIS OR ANY
APPLICATOR
WITHOUT SAFETY
GUARD IN POSITION.

PART CODE	PART NUMBER	QUANTITY	DESCRIPTION
74259	11-223	(1)	PLUNGER
77918	1102-FS	(1)	FLOATING SHANK
75713	11B1	(1)	CAM ROLLER BRACKET
75719	1142	(1)	CAM ROLLER BEARING
74422	314L-9A	(1)	CAM BODY
74404	312	(1)	CAM TAPER PIN
74402	310	(1)	CLOCK SPRING
74403	311	(1)	ROLL PIN
76969	169	(1)	UNIVERSAL GIB
72386	1600-329	(1)	STRIPPER
73935	202	(1)	BASE PLATE
73903	101-35	(1)	TOP CASTING
72575	408-640	(1)	BRAKE SPACER
74676	407	(1)	SPRING
74675	406	(1)	COTTER PIN
74674	405	(1)	TAPER PIN
74673	404	(1)	BRAKE CAM
74230	403-194	(1)	BRAKE BODY
74496	402	(1)	BRAKE SPRING RETAINER
74495	401	(1)	BRAKE SHAFT
76859	306	(1)	FEED FINGER STOP
74393	305	(1)	FEED FINGER ARM
74400	308	(1)	FEED SHAFT
77736	304-365	(1)	REAR SPACER
76859	307-6	(1)	SPRING
72574	303-159	(1)	FEED FINGER
76859	307-6	(1)	FEED FINGER SPRING
77735	302-135	(1)	FRONT SPACER
72580	16-082	(1)	PUNCH SPACER
76918	301-4	(1)	SHOULDER SCREW

NOTE: ITEMS MARKED WITH AN *
ARE HIGH WEAR ITEMS



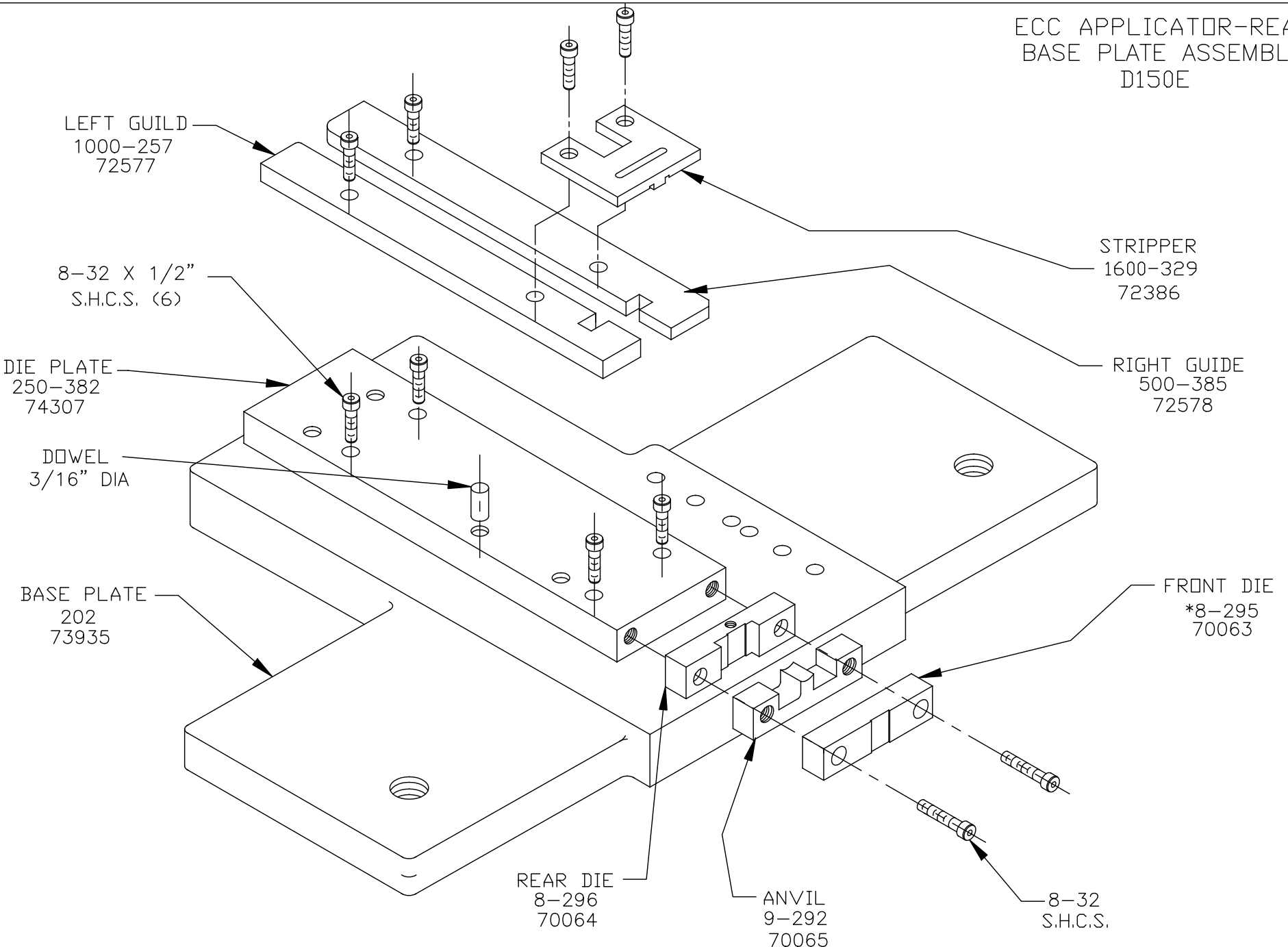
REFERENCE LIST:
D150E
ECC APPLICATOR
REAR FEED
BILL OF MATERIAL NUMBER
79712

WARNING !
NEVER OPERATE
THIS OR ANY
APPLICATOR
WITHOUT SAFETY
GUARD IN POSITION.

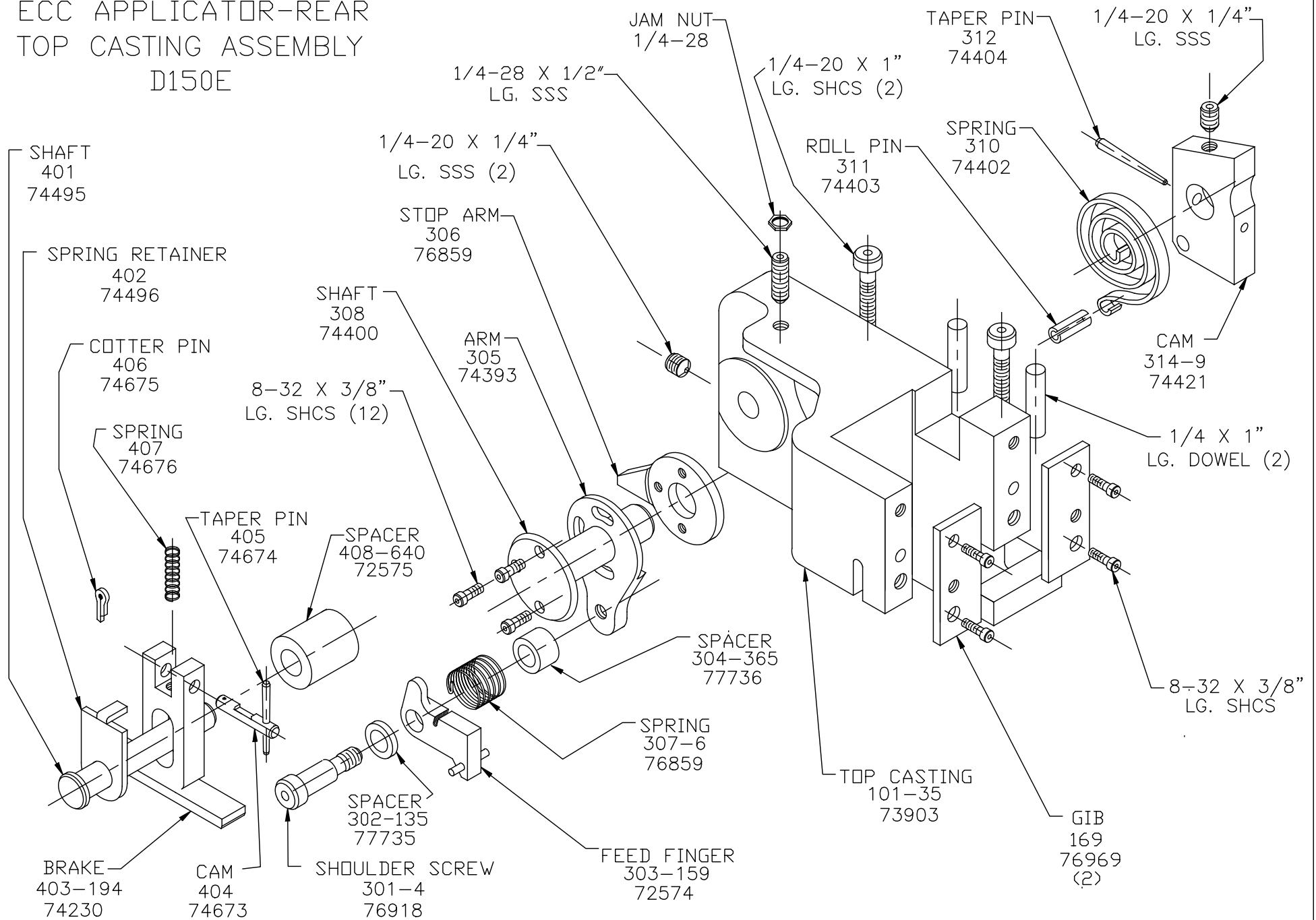
PART CODE	PART NUMBER	QUANTITY	DESCRIPTION

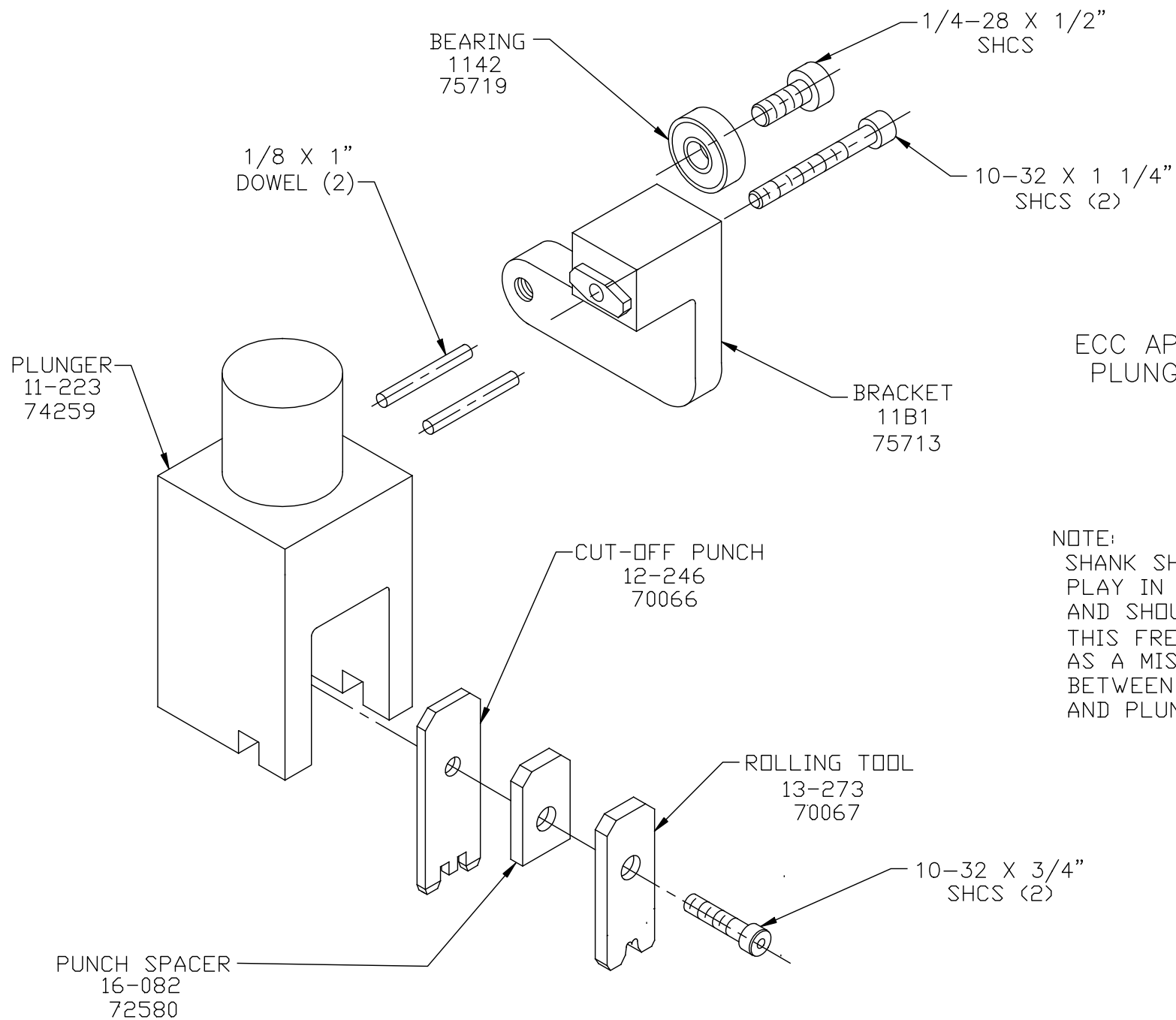
NOTE: ITEMS MARKED WITH AN *
ARE HIGH WEAR ITEMS

ECC APPLICATOR-REAR
BASE PLATE ASSEMBLY
D150E



ECC APPLICATOR-REAR
TOP CASTING ASSEMBLY
D150E

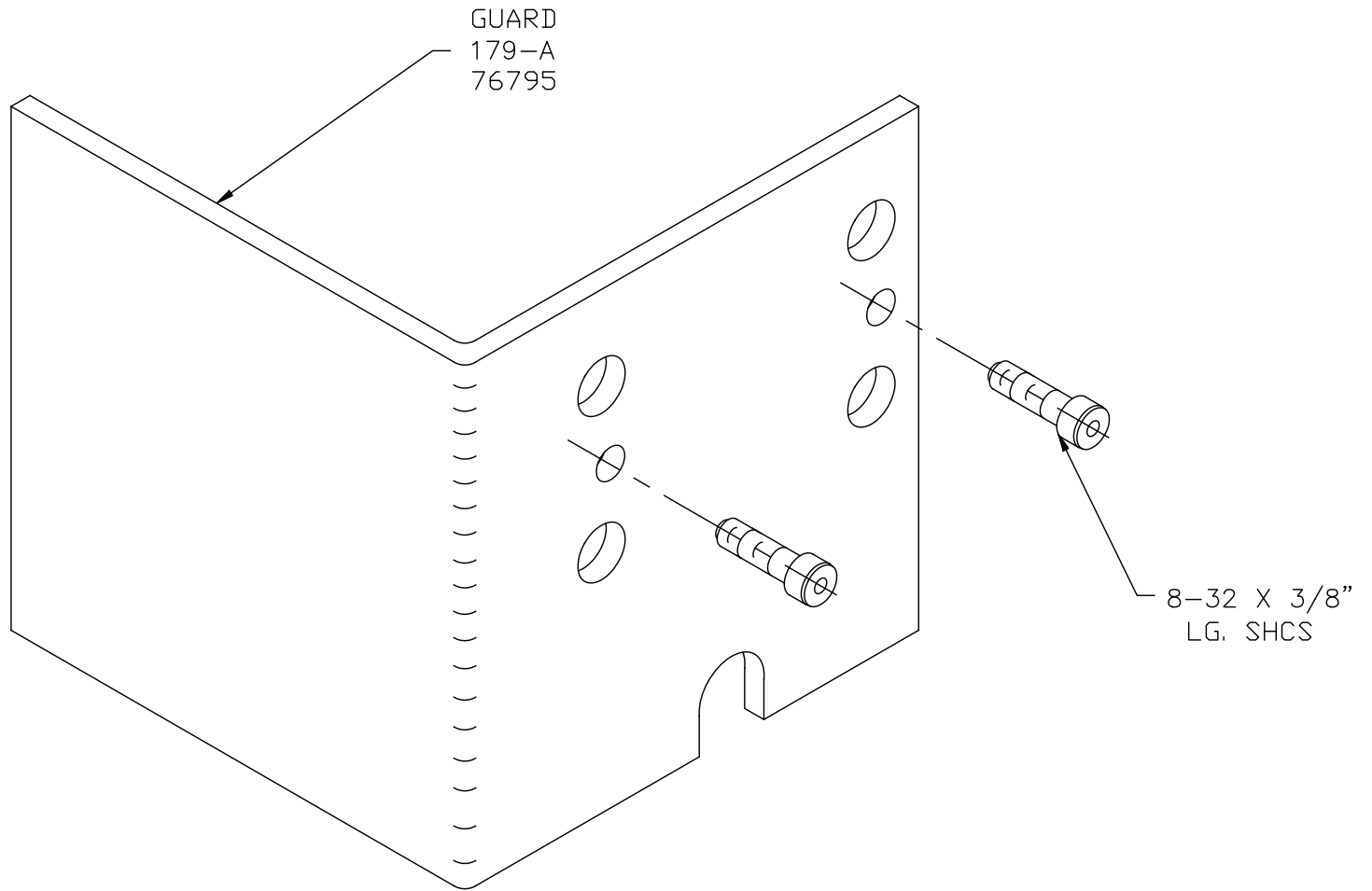




ECC APPLICATOR-REAR
PLUNGER ASSEMBLY
D150E

NOTE:
SHANK SHOULD HAVE FREE
PLAY IN THE VERTICAL AXIS
AND SHOULD SPIN FREELY.
THIS FREE MOTION SERVES
AS A MISALIGNMENT COUPLING
BETWEEN PRESS RAM
AND PLUNGER.

ECC APPLICATOR-REAR
SAFETY GUARD
D150E



NEVER OPERATE APPLICATOR WITHOUT
SAFETY GUARD IN POSITION.