



REFERENCE LIST:
DF110
ECC APPLICATOR
REAR FEED
BILL OF MATERIAL NUMBER
79762

WARNING !
NEVER OPERATE
THIS OR ANY
APPLICATOR
WITHOUT SAFETY
GUARD IN POSITION.

PART CODE	PART NUMBER	QUANTITY	DESCRIPTION
75552	11032-FS	(1)	PLUNGER
77918	1102-FS	(1)	FLOATING SHANK
		N/A	ADJUST SCREW
		N/A	INSULATION BLOCK
		N/A	CUT-OFF PUNCH DRIVER
71819	*12-DF110N	(1)	CUT-OFF PUNCH
72642	*13-DF110N	(1)	WIRE ROLLING TOOL
		N/A	INSULATION ROLLING TOOL
75713	11B1	(1)	CAM ROLLER BRACKET
75719	1142	(1)	CAM ROLLER BEARING
74422	314L-9A	(1)	CAM BODY
77106	312-1	(1)	CAM TAPER PIN
74402	310	(1)	CLOCK SPRING
73706	311-1	(1)	ROLL PIN
76969	169	(2)	UNIVERSAL GIB
		N/A	GIB
		N/A	STRIPPER
73903	101-35	(1)	TOP CASTING
77154	408-.812	(1)	BRAKE SPACER
74676	407	(1)	SPRING
74675	406	(1)	COTTER PIN
74674	405	(1)	TAPER PIN
74673	404	(1)	BRAKE CAM
74559	403-59	(1)	BRAKE BODY
74496	402	(1)	BRAKE SPRING RETAINER
74495	401	(1)	BRAKE SHAFT
74396	306	(1)	FEED FINGER STOP
74393	305	(1)	FEED FINGER ARM
76894	304-500	(1)	REAR SPACER
74400	308	(1)	FEED SHAFT
76860	307-8	(1)	FEED TENSION SPRING
74325	303	(1)	FEED FINGER
70878	8S-DF110N	(1)	DIE SPACER
76873	301-4	(1)	SHOULDER SCREW
71559	10R-DF110N	(1)	RIGHT GUIDE
71546	10L-DF110N	(1)	LEFT GUIDE

NOTE: ITEMS MARKED WITH AN *
ARE HIGH WEAR ITEMS



REFERENCE LIST:
DF110
ECC APPLICATOR
REAR FEED
BILL OF MATERIAL NUMBER
79762

WARNING !
NEVER OPERATE
THIS OR ANY
APPLICATOR
WITHOUT SAFETY
GUARD IN POSITION.

PART CODE	PART NUMBER	QUANTITY	DESCRIPTION
70314	8A-DF120N	(1)	DIE PLATE
70470	*8B-DF120S	(1)	DIE
71197	*9DF-110N-1	(1)	ANVIL
		N/A	DIE CUT-OFF RETAINER
		N/A	CUT-OFF PUNCH PAD
		N/A	SPRING
		N/A	WIRE STOP
73935	202	(1)	BASE PLATE
77032	GS-160	(2)	GUARD SPACER
77033	177	(1)	GUARD
		(1)	10-32 X 1 1/4" S.H.C.S.
		(1)	1/4-28 X 1/2" S.H.C.S.
		(2)	1/8 X 1" DOWEL
		(1)	5/16 X 3/4" SHOULDER SCREW
		(2)	10-32 X 3/4" S.H.C.S.
		(2)	1/4-20 X 1/4" S.S.S.
		(2)	1/4 X 1" DOWEL
		(1)	1/4-28 JAM NUT
		(2)	1/4-20 X 1" S.H.C.S.
		(13)	8-32 X 3/8" S.H.C.S.
		(1)	1/4-28 X 3/4" S.H.C.S.
		(2)	8-32 X 5/8" S.H.C.S.

NOTE: ITEMS MARKED WITH AN *
ARE HIGH WEAR ITEMS

*ECC APPLICATOR
REAR FEED
DF110*

8-32 X 3/8" S.H.C.S. (4)

10L-DF110N
71546

10R-DR110N
71559

202
73935

8A-DF120N
70314

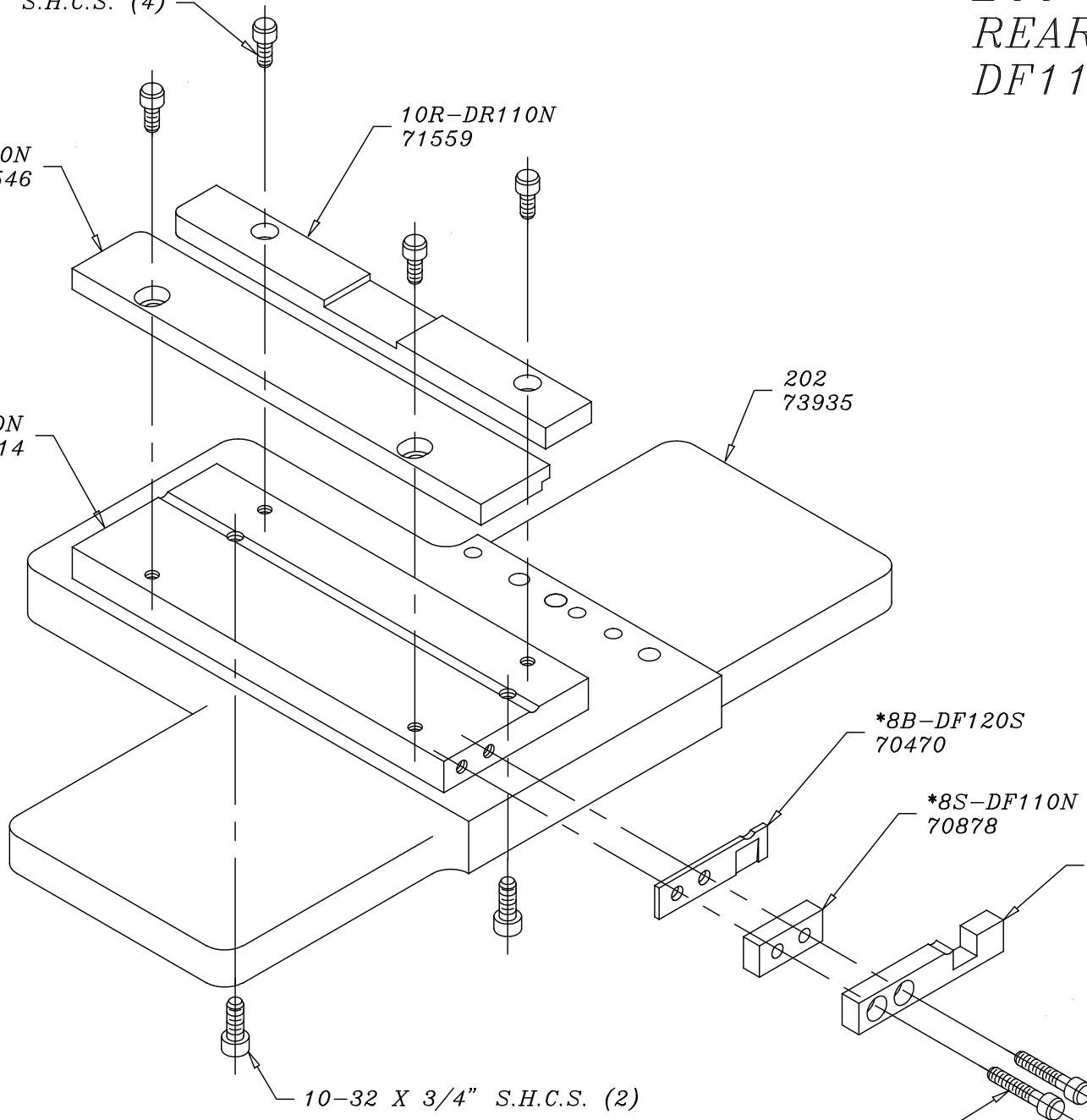
*8B-DF120S
70470

*8S-DF110N
70878

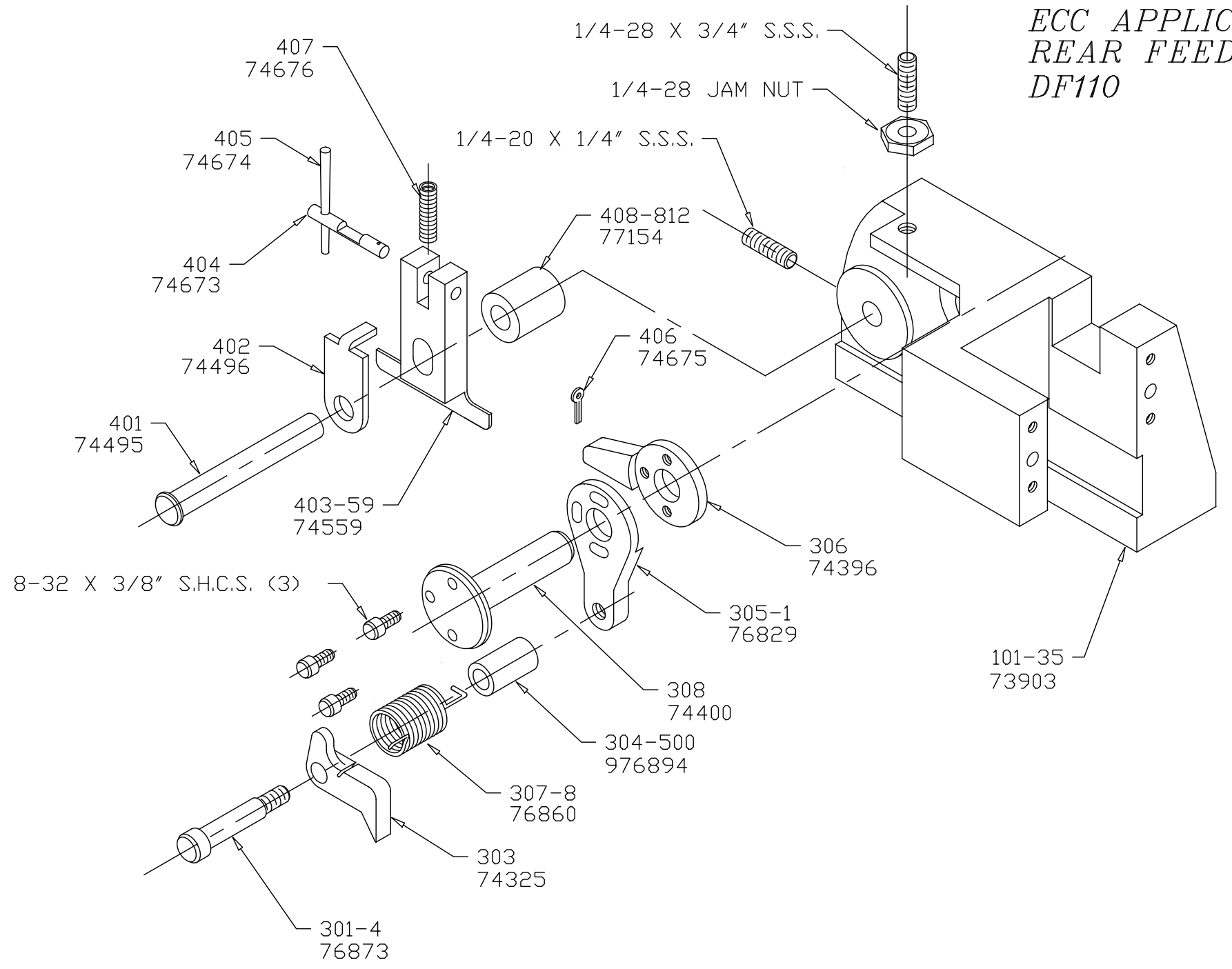
*9-DF110N-1
71197

10-32 X 3/4" S.H.C.S. (2)

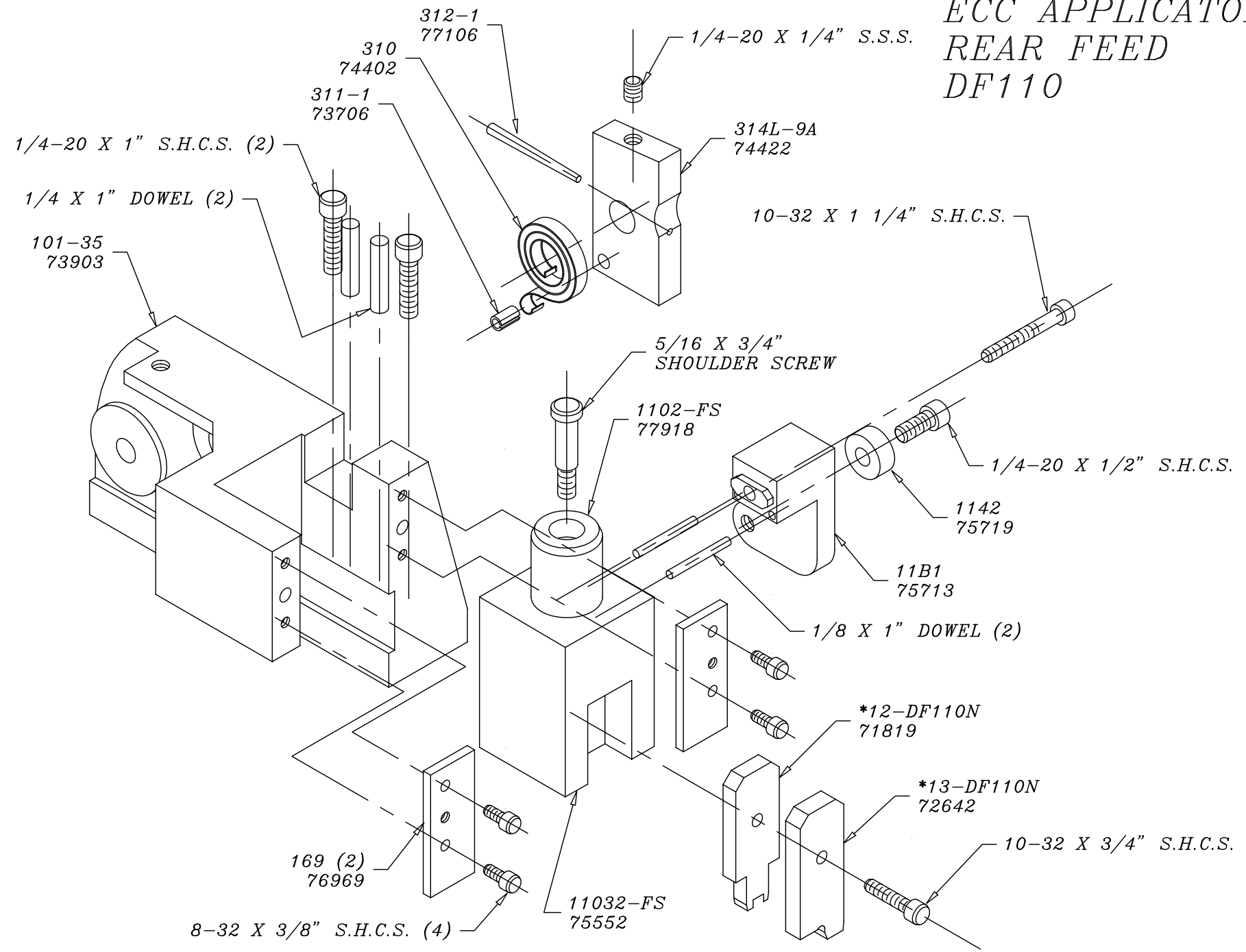
8-32 X 5/8" S.H.C.S. (2)

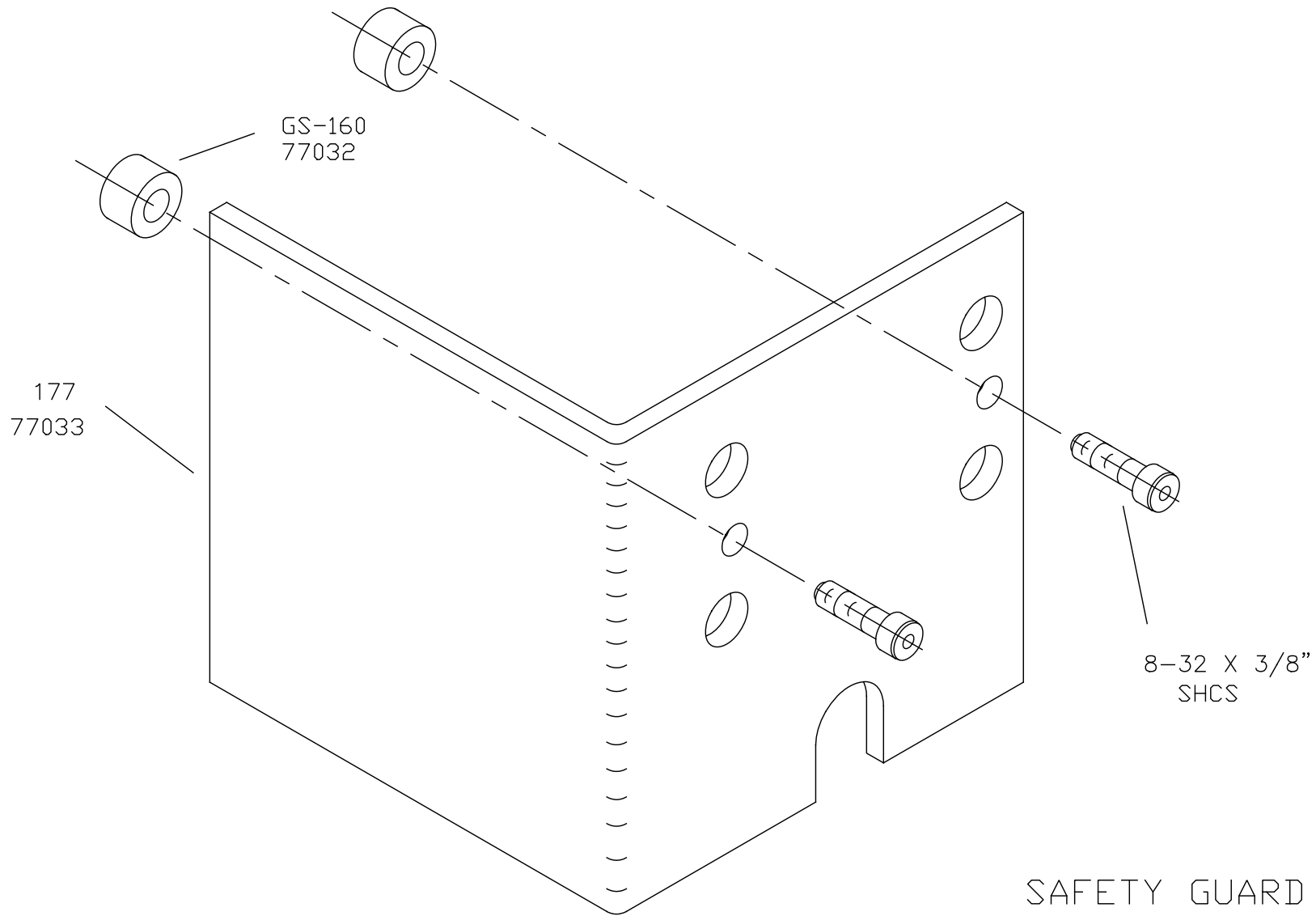


*ECC APPLICATOR
REAR FEED
DF110*



ECC APPLICATOR REAR FEED DF110





NEVER OPERATE APPLICATOR WITHOUT
SAFETY GUARD IN POSITION.

SAFETY GUARD
DF110, DF112