



**REFERENCE LIST:
R15
ECC APPLICATOR
BILL OF MATERIAL NUMBER
79789**

**WARNING !
NEVER OPERATE
THIS OR ANY
APPLICATOR
WITHOUT SAFETY
GUARD IN POSITION.**

PART CODE	PART NUMBER	QUANTITY	DESCRIPTION
75495	1100-FS	(1)	PLUNGER
77918	1102-FS	(1)	FLOATING SHANK
		N/A	CUT-OFF SCREW
75728	1155	(1)	ADJUST SCREW
75724	1150	(1)	INSULATION BLOCK
75710	1125	(1)	CAM ROLLER BRACKET
75719	1142	(1)	CAM ROLLER BEARING
71770	*12-R16-2	(1)	CUT-OFF PUNCH
72576	*13-R15-2	(1)	WIRE ROLLING TOOL
73282	17-035	(1)	SPACER
73528	6-047-50	(1)	SPRING
		N/A	INSULATION ROLLING TOOL
74410	314-2	(1)	CAM
74403	311	(1)	SPRING PIN
74404	312	(1)	CAM TAPER PIN
74402	310	(1)	CAM RETURN SPRING
73899	101	(1)	TOP CASTING
76969	169	(2)	UNIVERSAL GIBS
74675	406	(1)	COTTER PIN
74676	407	(1)	BRAKE SPRING
77286	408-.687	(1)	BRAKE BUSHING
74674	405	(1)	TAPER PIN
74673	404	(1)	BRAKE CAM
74498	403-1	(1)	BRAKE BODY
74496	402	(1)	SPRING RETAINER
74495	401	(1)	BRAKE SHAFT
74396	306	(1)	FEED FINGER STOP
74393	305	(1)	FEED FINGER ARM
74400	308	(1)	FEED SHAFT
76894	304-500	(1)	REAR SPACER
76860	307-8	(1)	SPRING
76414	303-149	(1)	FEED FINGER
		N/A	FRONT SPACER
76873	301-4	(1)	SHOULDER SCREW
73952	231	(2)	STRIPPER SPRING

**NOTE: ITEMS MARKED WITH AN *
ARE HIGH WEAR ITEMS**



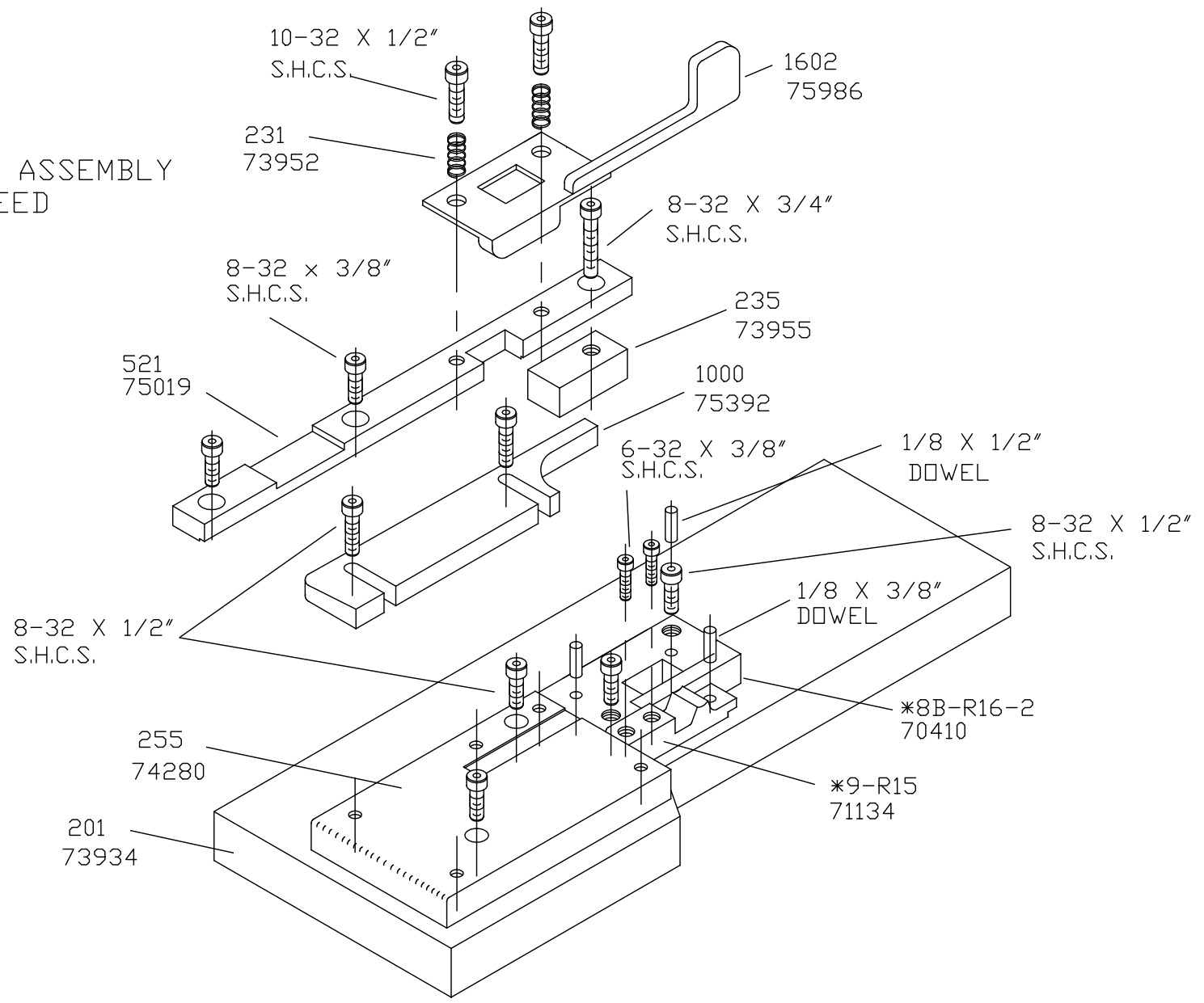
REFERENCE LIST:
R15
ECC APPLICATOR
BILL OF MATERIAL NUMBER
79789

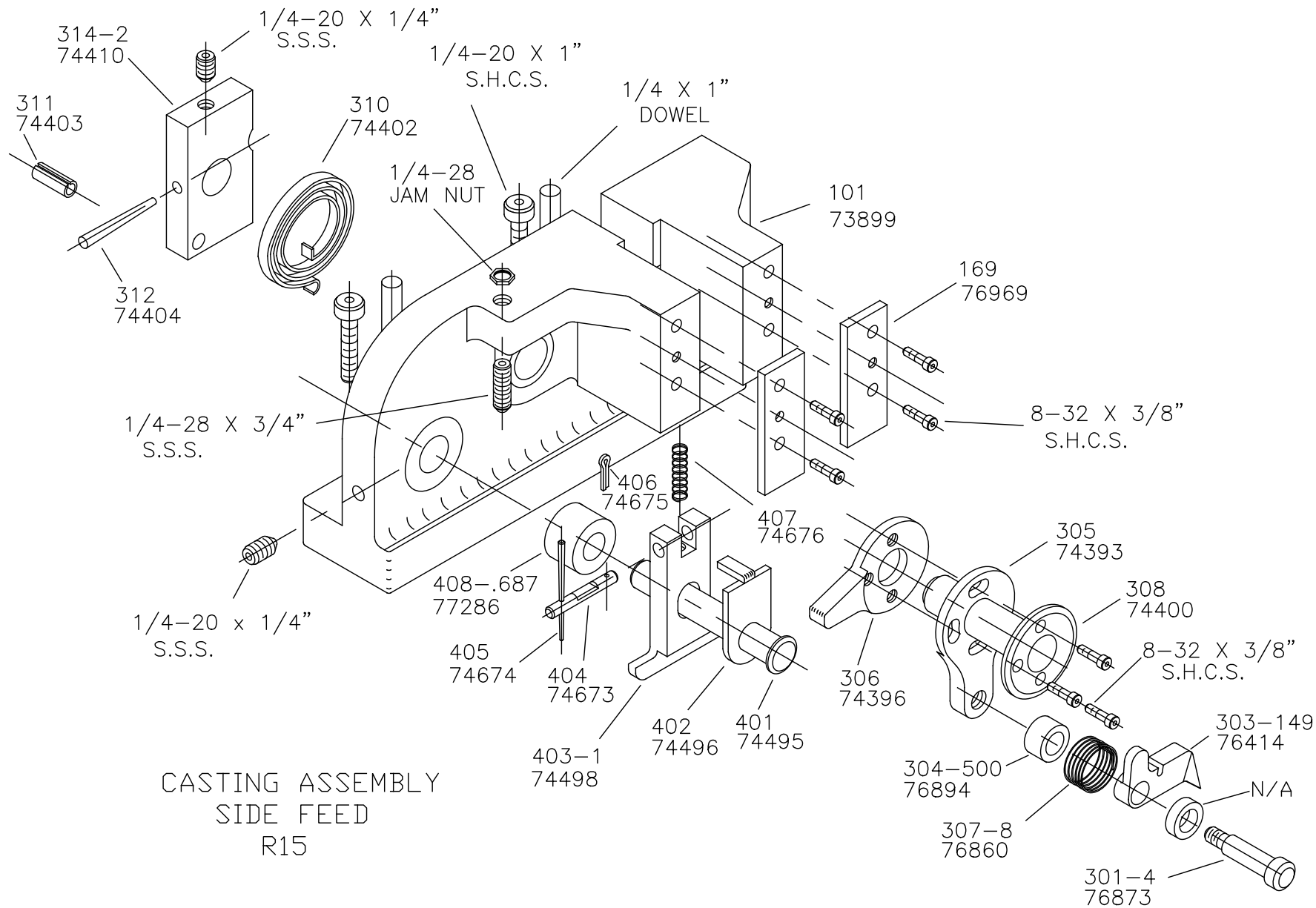
WARNING !
NEVER OPERATE
THIS OR ANY
APPLICATOR
WITHOUT SAFETY
GUARD IN POSITION.

PART CODE	PART NUMBER	QUANTITY	DESCRIPTION
75985	1602	(1)	WIRE STRIPPER / STOP
73955	235	(1)	GUIDE SPACER BLOCK
75019	521	(1)	REAR / RIGHT GUIDE
75392	1000	(1)	FRONT / LEFT GUIDE
74280	255	(1)	DIE PLATE
73934	201	(1)	BASE PLATE
70410	*8B-R16-2	(1)	DIE
71134	*9-R15	(1)	ANVIL
76186	1800	(1)	STOCK CHUTE
74492	GS-625	(2)	GUARD SPACER
73922	176	(1)	GUARD
		(1)	10-32 X 1 1/4" S.H.C.S.
		(1)	1/4-28 X 1/2" S.H.C.S.
		(2)	1/8 X 1" DOWEL
		(1)	5/16 X 3/4" SHOULDER SCREW
		(1)	1/4-28 X 3/4" S.S.S.
		(2)	1/4-20 X 1" S.H.C.S.
		(2)	1/4 X 1" DOWEL
		(1)	1/4-28 JAM NUT
		(2)	1/4-20 X 1/4" S.S.S.
		(10)	8-32 X 3/8" S.H.C.S.
		(2)	10-32 X 1/2" S.H.C.S.
		(1)	8-32 X 3/4" S.H.C.S.
		(2)	6-32 X 3/8" S.H.C.S.
		(8)	8-32 X 1/2" S.H.C.S.
		(2)	1/8 X 1/2" DOWEL
		(1)	1/8 X 3/8" DOWEL
		(3)	10-32 X 3/8" S.H.C.S.

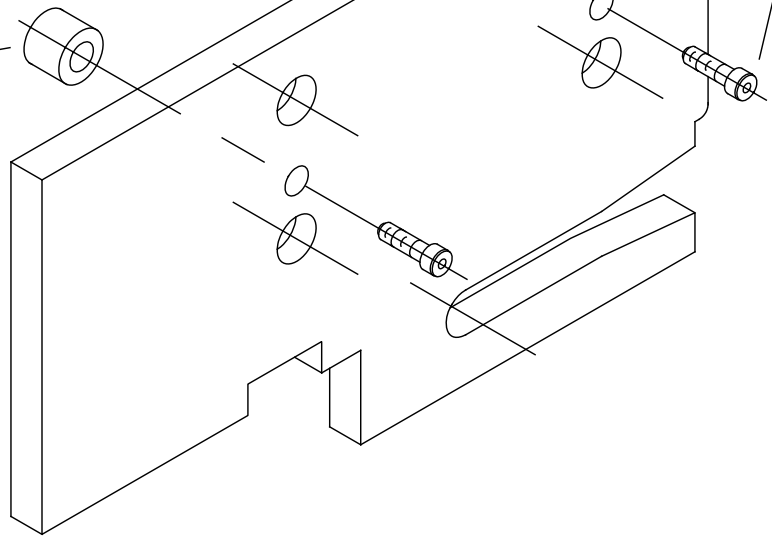
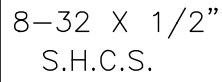
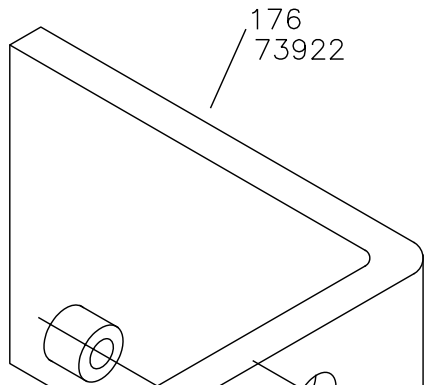
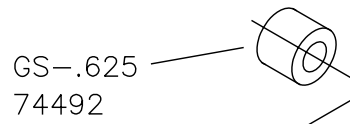
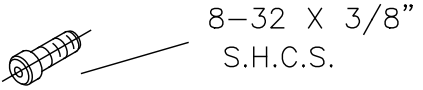
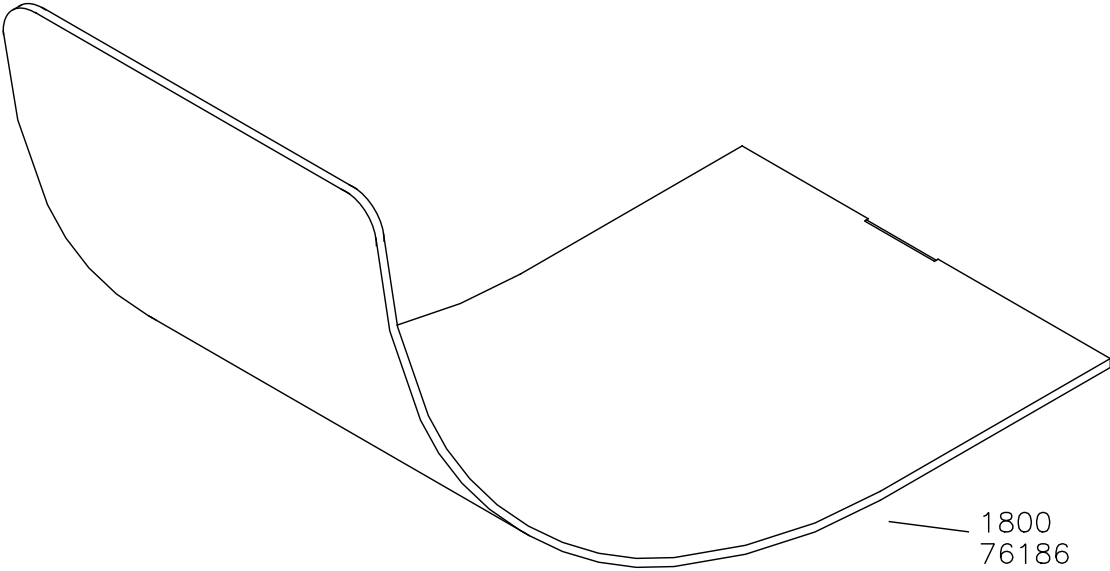
NOTE: ITEMS MARKED WITH AN *
ARE HIGH WEAR ITEMS

BASE PLATE ASSEMBLY
SIDE FEED
R15





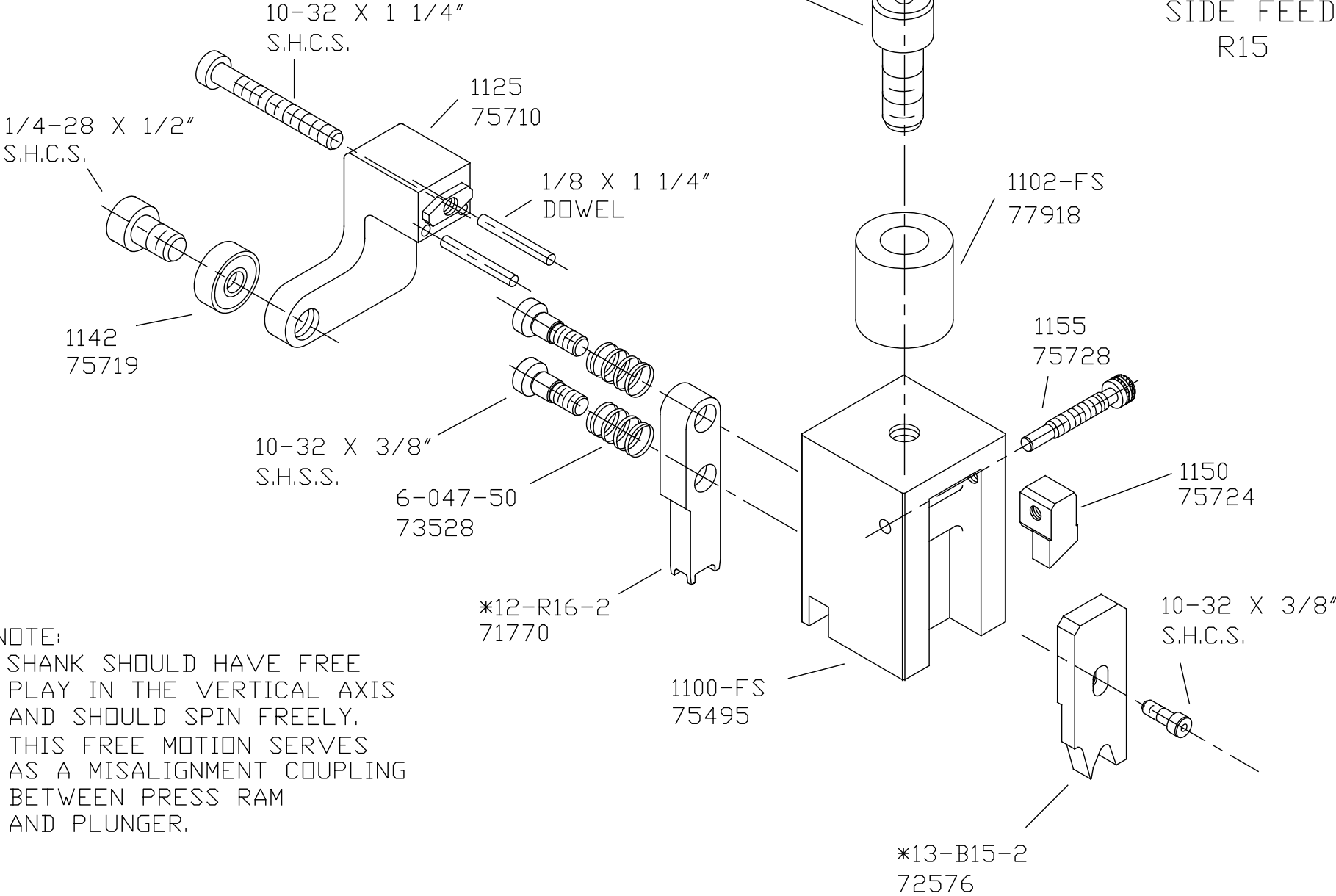
CHUTE AND GUARD R15



NEVER OPERATE APPLICATOR WITHOUT
SAFETY GUARD IN POSITION.

PLUNGER ASSEMBLY
SIDE FEED
R15

5/16 X 3/4"
SHOULDER SCREW



NOTE:
SHANK SHOULD HAVE FREE
PLAY IN THE VERTICAL AXIS
AND SHOULD SPIN FREELY.
THIS FREE MOTION SERVES
AS A MISALIGNMENT COUPLING
BETWEEN PRESS RAM
AND PLUNGER.