



REFERENCE LIST:
 D265, D280, D285
 ECC APPLICATOR
 BILL OF MATERIAL NUMBER
 79800

WARNING !
 NEVER OPERATE
 THIS OR ANY
 APPLICATOR
 WITHOUT SAFETY
 GUARD IN POSITION.

PART CODE	PART NUMBER	QUANTITY	DESCRIPTION
75495	1100-FS	(1)	PLUNGER
77918	1102-FS	(1)	FLOATING SHANK
		N/A	CUT-OFF SCREW
75728	1155	(1)	ADJUST SCREW
75724	1150	(1)	INSULATION BLOCK
75710	1125	(1)	CAM ROLLER BRACKET
75719	1142	(1)	CAM ROLLER BEARING
71921	*12-D240/260	(1)	CUT-OFF PUNCH
72579	*13-R16-2	(1)	WIRE ROLLING TOOL
73124	*14-M223	(1)	INSULATION ROLLING TOOL
72332	12S-D240-260	(1)	CUT-OFF SPACER
77838	6-047-56	(2)	SPRING
74410	314-2	(1)	CAM
74403	311	(1)	SPRING PIN
74404	312	(1)	CAM TAPER PIN
74402	310	(1)	CAM RETURN SPRING
73899	101	(1)	TOP CASTING
76969	169	(2)	UNIVERSAL GIBS
74675	406	(1)	COTTER PIN
74676	407	(1)	BRAKE SPRING
76720	408-487	(1)	BRAKE BUSHING
74674	405	(1)	TAPER PIN
74673	404	(1)	BRAKE CAM
74509	403-11	(1)	BRAKE BODY
74496	402	(1)	SPRING RETAINER
74495	401	(1)	BRAKE SHAFT
74396	306	(1)	FEED FINGER STOP
74393	305	(1)	FEED FINGER ARM
74400	308	(1)	FEED SHAFT
77837	304-281	(1)	REAR SPACER
76787	307-4	(1)	SPRING
70098	7A-D240-260	(1)	FEED FINGER
77836	302-095	(1)	FRONT SPACER
76858	301-3	(1)	SHOULDER SCREW
73952	231	(2)	STRIPPER SPRING
76009	1627	(1)	WIRE STRIPPER / STOP

**NOTE: ITEMS MARKED WITH AN *
 ARE HIGH WEAR ITEMS**

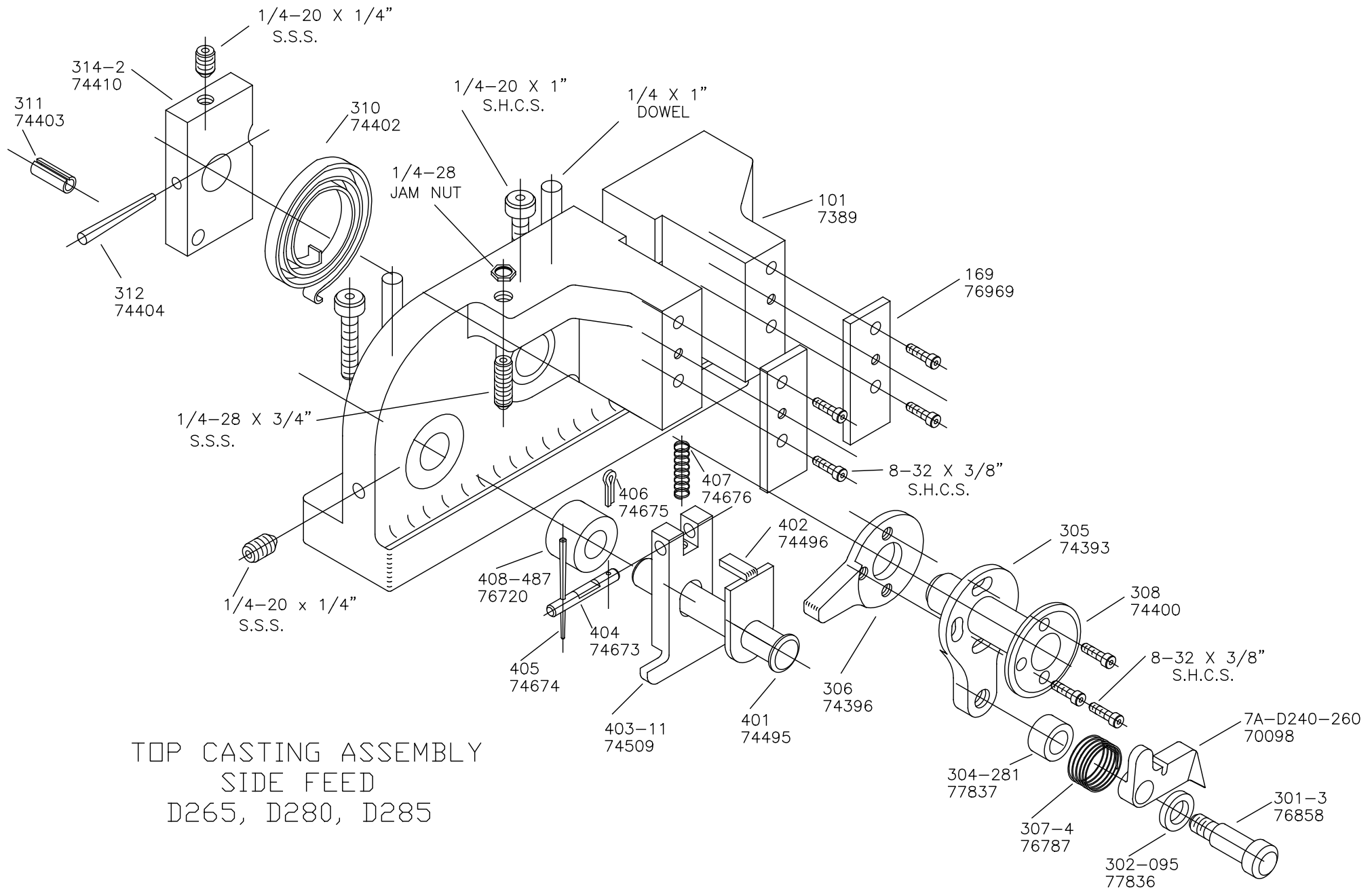


**REFERENCE LIST:
D265, D280, D285
ECC APPLICATOR
BILL OF MATERIAL NUMBER
79800**

**WARNING !
NEVER OPERATE
THIS OR ANY
APPLICATOR
WITHOUT SAFETY
GUARD IN POSITION.**

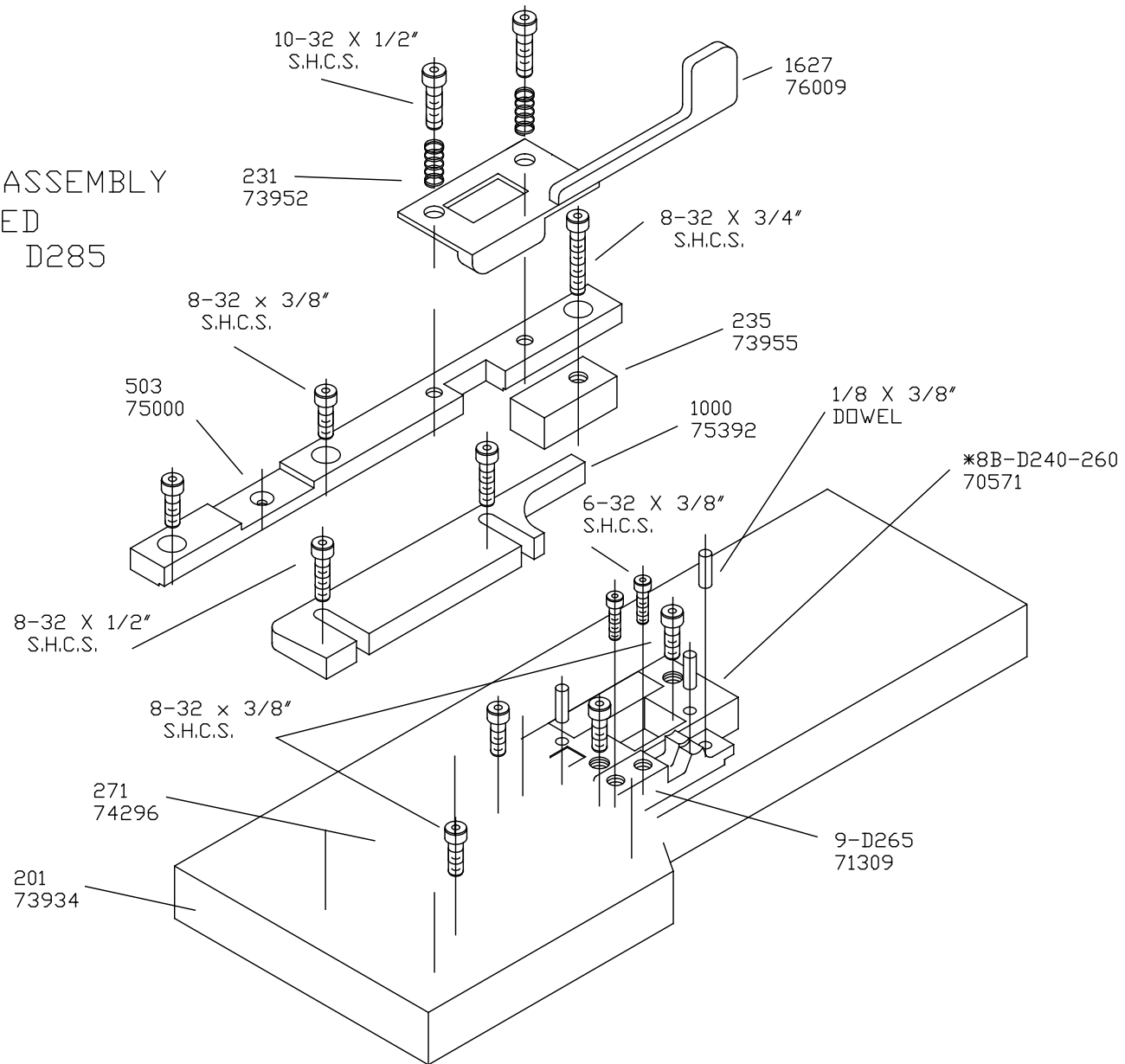
PART CODE	PART NUMBER	QUANTITY	DESCRIPTION
73955	235	(1)	GUIDE SPACER BLOCK
75000	503	(1)	REAR / RIGHT GUIDE
75392	1000	(1)	FRONT / LEFT GUIDE
70571	*8B-D240-260	(1)	DIE
74296	271	(1)	DIE PLATE
73934	201	(1)	BASE PLATE
71309	*9-D265	(1)	ANVIL
76186	1800	(1)	STOCK CHUTE
		N/A	GUARD SPACER
73922	176	(1)	GUARD
		(1)	10-32 X 1 1/2 S.H.C.S.
		(1)	1/4-28 X 1/2" S.H.C.S.
		(2)	1/8 X 1" DOWEL
		(2)	1/4 X 3/8" SHOULDER SCREW
		(1)	5/16 X 3/4" SHOULDER SCREW
		(1)	10-32 X 3/8" S.H.C.S.
		(2)	10-32 X 1/2" S.H.C.S.
		(1)	1/4-28 X 3/4" S.S.S.
		(2)	1/4-20 X 1" S.H.C.S.
		(2)	1/4 X 1" DOWEL
		(1)	1/4-28 JAM NUT
		(2)	1/4-20 X 1/4" S.S..
		(16)	8-32 X 3/8" S.H.C.S.
		(2)	10-32 X 1/2" S.H.C.S.
		(1)	8-32 X 3/4" S.H.C.S.
		(2)	6-32 X 3/8" S.H.C.S.
		(2)	8-32 X 1/2" S.H.C.S.
		(2)	1/8 X 3/8" DOWEL

**NOTE: ITEMS MARKED WITH AN *
ARE HIGH WEAR ITEMS**

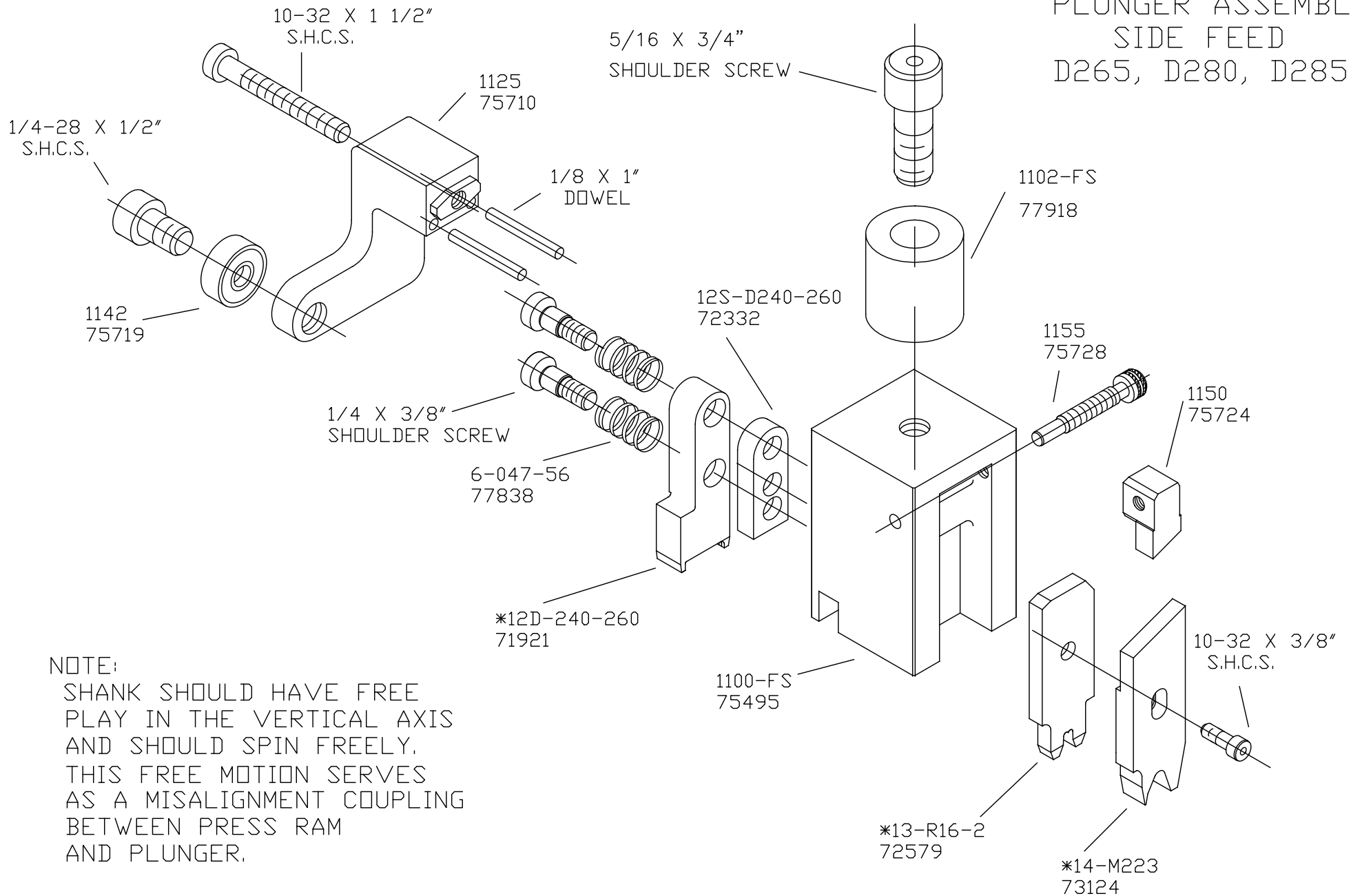


TOP CASTING ASSEMBLY
 SIDE FEED
 D265, D280, D285

BASE PLATE ASSEMBLY
SIDE FEED
D265, D280, D285

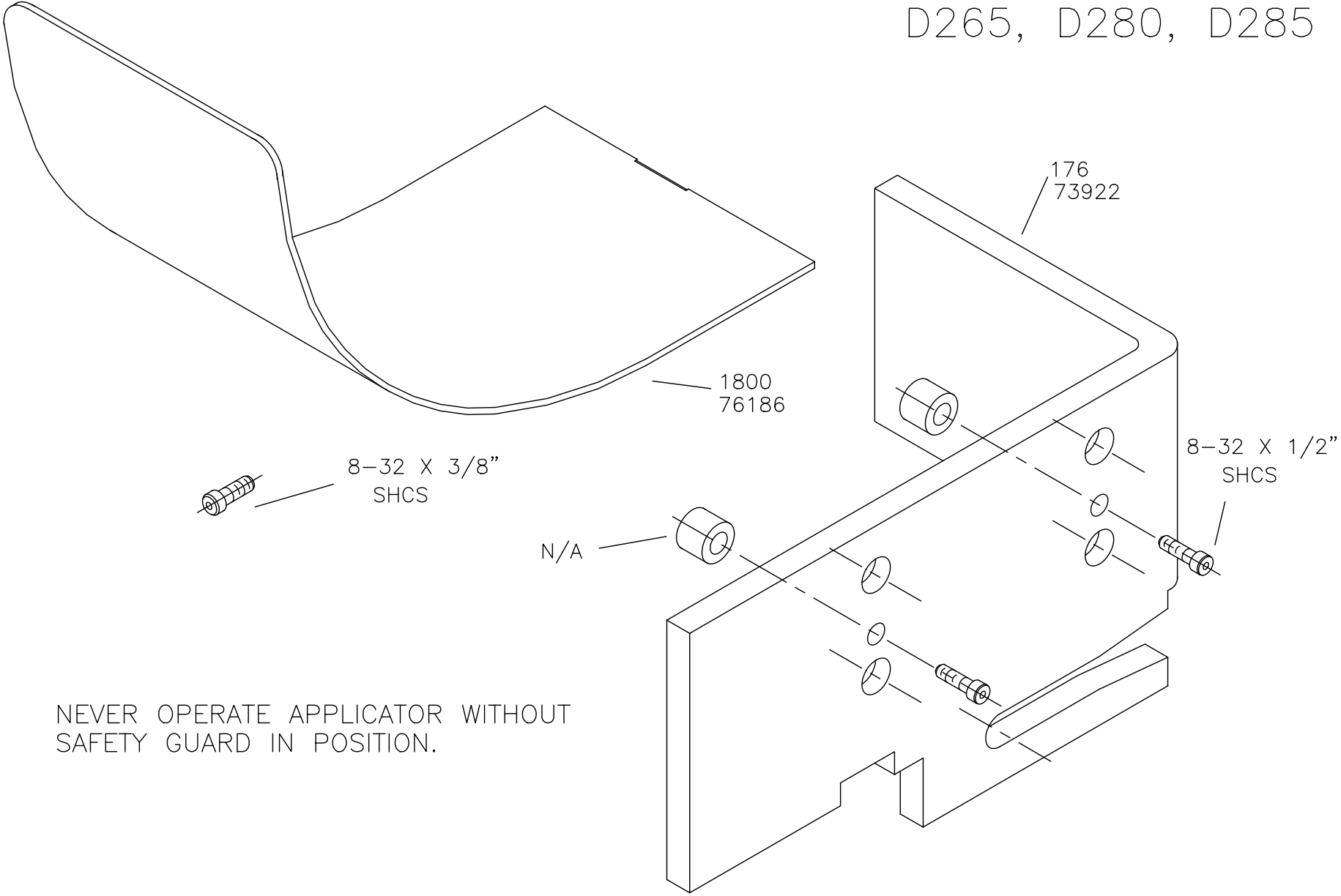


PLUNGER ASSEMBLY
SIDE FEED
D265, D280, D285



NOTE:
SHANK SHOULD HAVE FREE PLAY IN THE VERTICAL AXIS AND SHOULD SPIN FREELY. THIS FREE MOTION SERVES AS A MISALIGNMENT COUPLING BETWEEN PRESS RAM AND PLUNGER.

CHUTE AND GUARD D265, D280, D285



NEVER OPERATE APPLICATOR WITHOUT
SAFETY GUARD IN POSITION.