



**REFERENCE LIST:
DF210R
ECC APPLICATOR
BILL OF MATERIAL NUMBER
79807**

**WARNING !
NEVER OPERATE
THIS OR ANY
APPLICATOR
WITHOUT SAFETY
GUARD IN POSITION.**

PART CODE	PART NUMBER	QUANTITY	DESCRIPTION
78034	11-DF211N-FS	(1)	PLUNGER
77918	1102-FS	(1)	FLOATING SHANK
		N/A	ADJUST SCREW
		N/A	INSULATION BLOCK
		N/A	CUT-OFF PUNCH DRIVER
71819	*12-DF110N	(1)	CUT-OFF PUNCH
78051	*13DF210N-1	(1)	WIRE ROLLING TOOL
		N/A	TOOL RETAINER
		N/A	INSULATION ROLLING TOOL
75713	11B1	(1)	CAM ROLLER BRACKET
75719	1142	(1)	CAM ROLLER BEARING
74424	314-11	(1)	CAM BODY
77106	312-1	(1)	CAM TAPER PIN
74402	310	(1)	CLOCK SPRING
73706	311-1	(1)	ROLL PIN
76969	169	(2)	UNIVERSAL GIB
		N/A	GIB
		N/A	STRIPPER
73903	101-35	(1)	TOP CASTING
70200	408-505	(1)	BRAKE BUSHING
74676	407	(1)	SPRING
74675	406	(1)	COTTER PIN
74674	405	(1)	TAPER PIN
74673	404	(1)	BRAKE CAM
70201	403-175	(1)	BRAKE BODY
74496	402	(1)	BRAKE SPRING RETAINER
74495	401	(1)	BRAKE SHAFT
74396	306	(1)	FEED FINGER STOP
76829	305-1	(1)	FEED FINGER ARM
70202	304-345	(1)	REAR SPACER
74400	308	(1)	FEED SHAFT
76859	307-6	(1)	SPRING
70056	7A-DF211R-N	(1)	FEED FINGER
70206	304-155	N/A	FRONT SPACER
76873	301-4	(1)	SHOULDER SCREW
74973	500-283	(1)	RIGHT GUIDE
74694	1000-158	(1)	LEFT GUIDE

**NOTE: ITEMS MARKED WITH AN *
ARE HIGH WEAR ITEMS**



**REFERENCE LIST:
DF210R
ECC APPLICATOR
BILL OF MATERIAL NUMBER
79807**

**WARNING !
NEVER OPERATE
THIS OR ANY
APPLICATOR
WITHOUT SAFETY
GUARD IN POSITION.**

PART CODE	PART NUMBER	QUANTITY	DESCRIPTION
74693	250-292	(1)	DIE PLATE
70470	*8B-DF120S	(1)	DIE
76869	*9-226	(1)	ANVIL
70879	8S-DF220L-N	(1)	DIE SPACER
		N/A	WIRE STOP
73935	202	(1)	BASE PLATE
		N/A	GUARD SPACER
77784	177R	(1)	GUARD
70583	17-019	(1)	SPACER
		(1)	10-32 X 1 1/4" S.H.C.S.
		(1)	1/4-28 X 1/2" S.H.C.S.
		(2)	1/8 X 1" DOWEL
		(1)	5/16 X 3/4" SHOULDER SCREW
		(1)	1/4-28 X 5/8" S.S.S.
		(2)	1/4-20 X 1" S.H.C.S.
		(2)	1/4 X 1" DOWEL
		(1)	1/4-28 JAM NUT
		(2)	1/4-20 X 1/4" S.S.S.
		(11)	8-32 X 3/8" S.H.C.S.
		(2)	8-32 X 1/2" S.H.C.S.
		(1)	10-32 X 3/4" S.H.C.S.
		(2)	8-32 X 3/4" S.H.C.S.
		(1)	3/16 X 1/2" DOWEL
		(2)	8-32 X 3/8" F.H.S.C.S.

**NOTE: ITEMS MARKED WITH AN *
ARE HIGH WEAR ITEMS**

1000-158
74694

8-32 X 3/8"
F.H.S.C.S.
(2)

BASE PLATE ASSEMBLY
DF210R, DF211R
REAR FEED

8-32 X 3/8"
S.H.C.S.

500-283
74973

250-292
74693

8-32 X 1/2"
S.H.C.S.

*8B-DF120S
70470

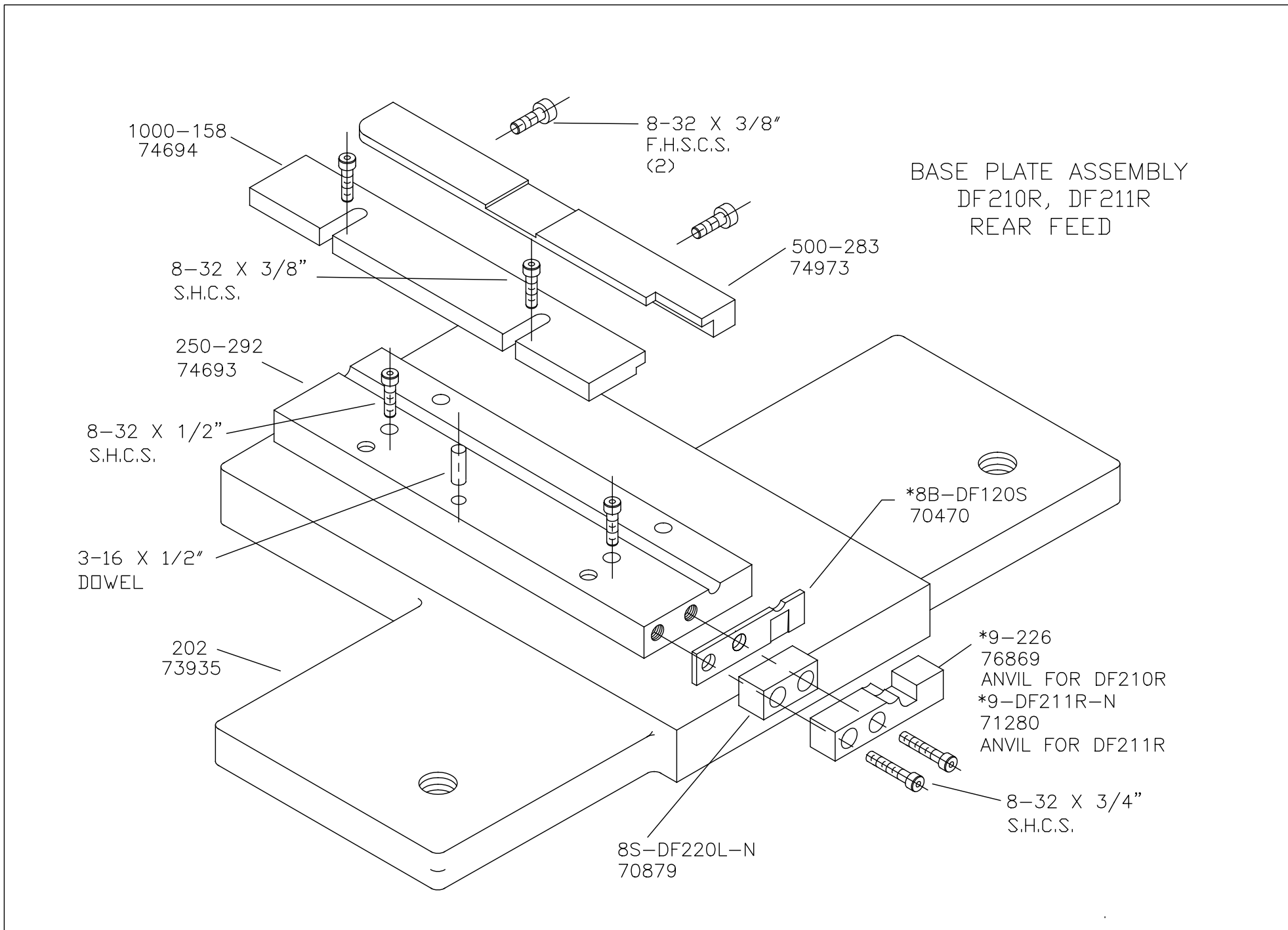
3-16 X 1/2"
DOWEL

202
73935

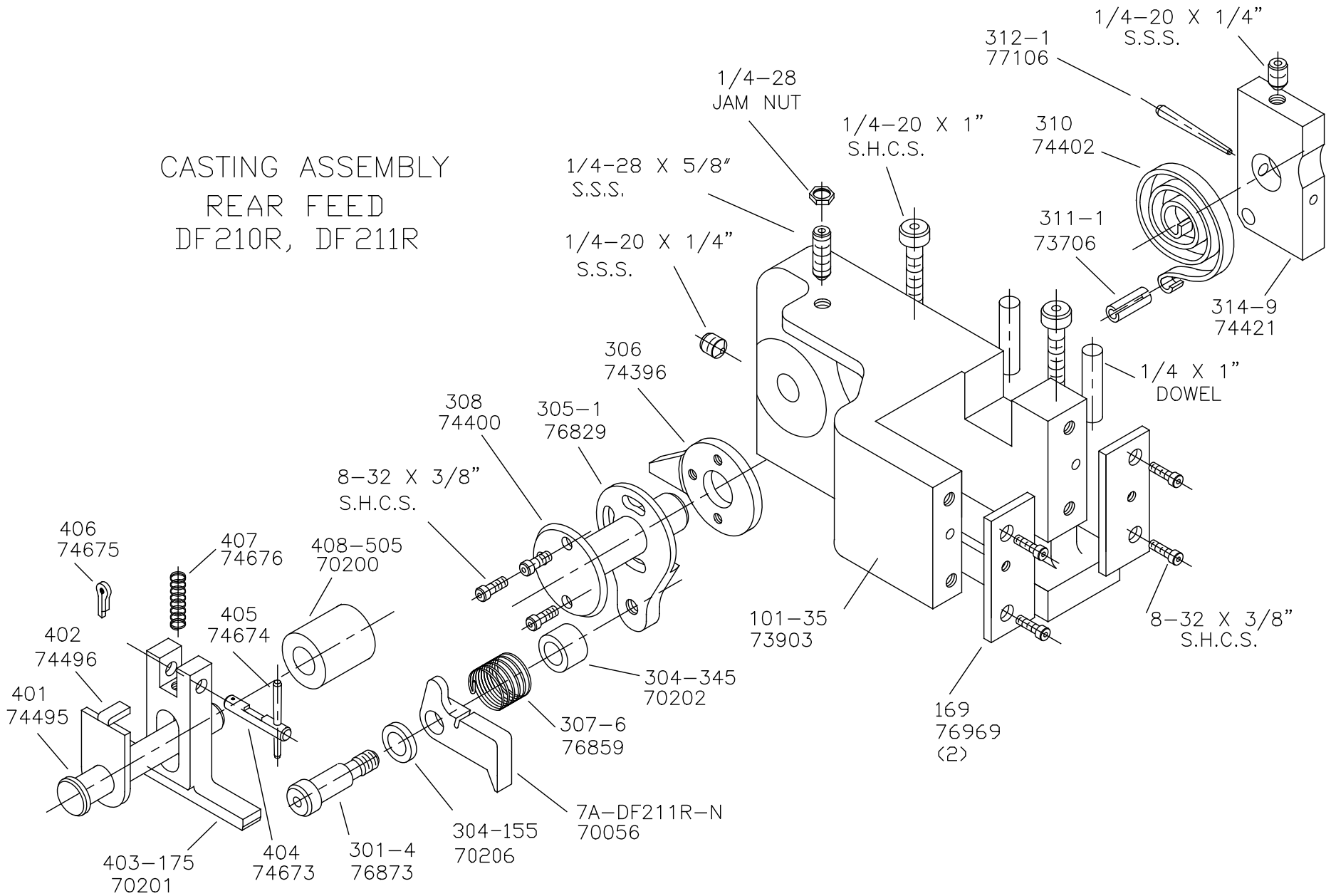
*9-226
76869
ANVIL FOR DF210R
*9-DF211R-N
71280
ANVIL FOR DF211R

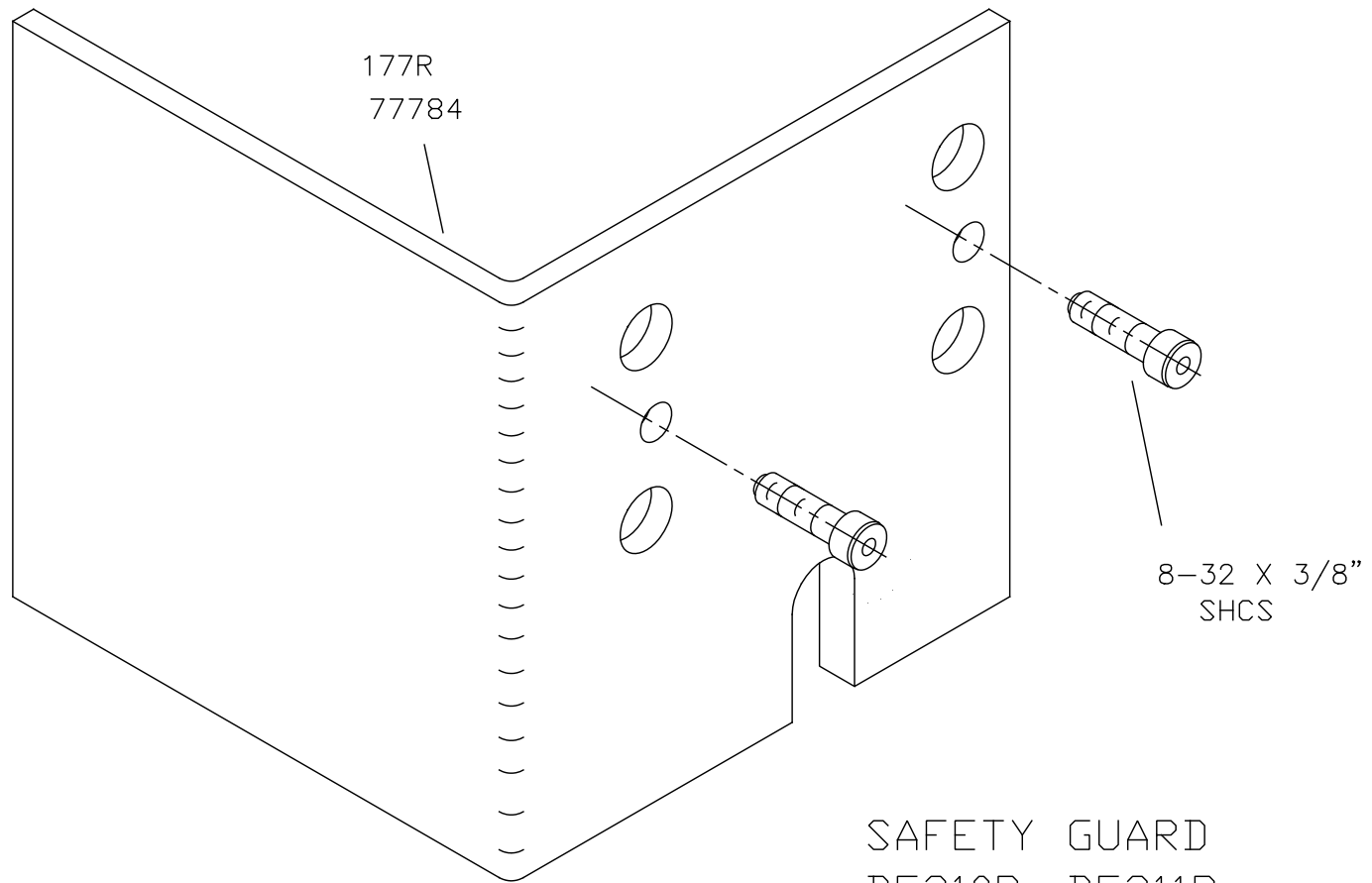
8-32 X 3/4"
S.H.C.S.

8S-DF220L-N
70879

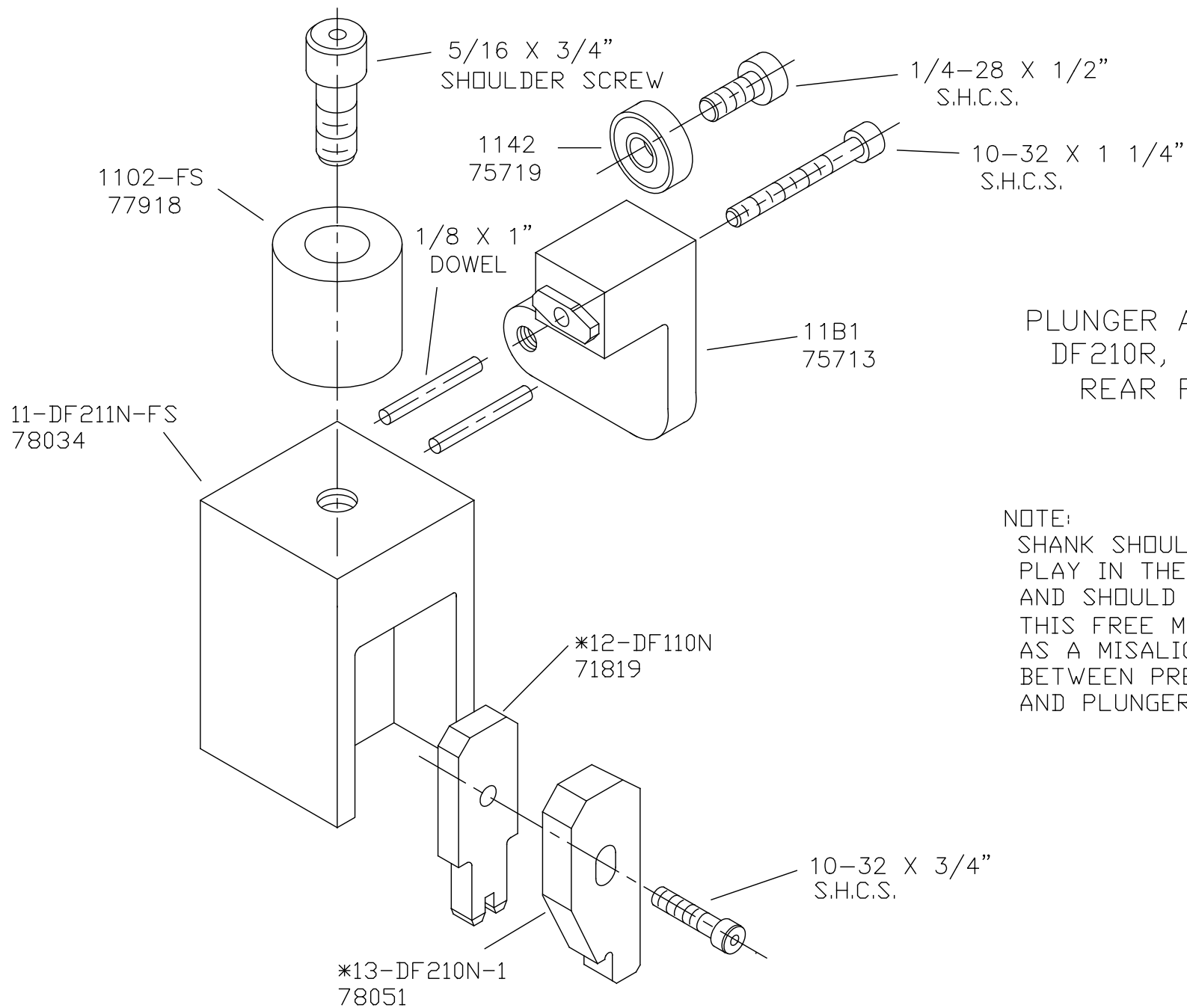


CASTING ASSEMBLY
 REAR FEED
 DF210R, DF211R





NEVER OPERATE APPLICATOR WITHOUT
SAFETY GUARD IN POSITION.



PLUNGER ASSEMBLY
DF210R, DF211R
REAR FEED

NOTE:
SHANK SHOULD HAVE FREE
PLAY IN THE VERTICAL AXIS
AND SHOULD SPIN FREELY.
THIS FREE MOTION SERVES
AS A MISALIGNMENT COUPLING
BETWEEN PRESS RAM
AND PLUNGER.