



**REFERENCE LIST:
D75-R
DUAL ATTACH FRONT
PAD RIGHT TO LEFT
ECC APPLICATOR
BILL OF MATERIAL NUMBER
79832**

**WARNING !
NEVER OPERATE
THIS OR ANY
APPLICATOR
WITHOUT SAFETY
GUARD IN POSITION.**

PART CODE	PART NUMBER	QUANTITY	DESCRIPTION
75496	1101-FS	(1)	PLUNGER
77918	1102-FS	(1)	FLOATING SHANK
		N/A	CUT-OFF SCREW
		N/A	ADJUST SCREW
		N/A	INSULATION BLOCK
75716	1125R	(1)	CAM ROLLER BRACKET
75719	1142	(1)	CAM ROLLER BEARING
74512	15-074	(1)	DRIVER
74511	*13-293	(1)	WIRE ROLLING TOOL
		N/A	INSULATION ROLLING TOOL
73708	314R-2	(1)	CAM
74403	311	(1)	SPRING PIN
74404	312	(1)	CAM TAPER PIN
74402	310	(1)	CAM RETURN SPRING
73901	101-R	(1)	TOP CASTING
76969	169	(2)	UNIVERSAL GIBS
74675	406	(1)	COTTER PIN
74676	407	(3)	SPRING
74890	408-.890	(1)	BRAKE BUSHING
74674	405	(1)	TAPER PIN
74673	404	(1)	BRAKE CAM
74581	403-200	(1)	BRAKE BODY (REVERSED)
74496	402	(1)	SPRING RETAINER
74495	401	(1)	BRAKE SHAFT
74561	306R-4	(1)	FEED FINGER STOP
74393	305	(1)	FEED FINGER ARM
74400	308	(1)	FEED SHAFT
74392	304-.750	(1)	REAR SPACER
73389	307-16R	(1)	SPRING
74579	303-123	(1)	FEED FINGER
		N/A	FRONT SPACER
76713	301-5	(1)	SHOULDER SCREW
74583	116-062-RIGHT	(1)	CASTING SPACER
		N/A	STRIPPER SPRING
		N/A	GUIDE SPACER BLOCK

**NOTE: ITEMS MARKED WITH AN *
ARE HIGH WEAR ITEMS**



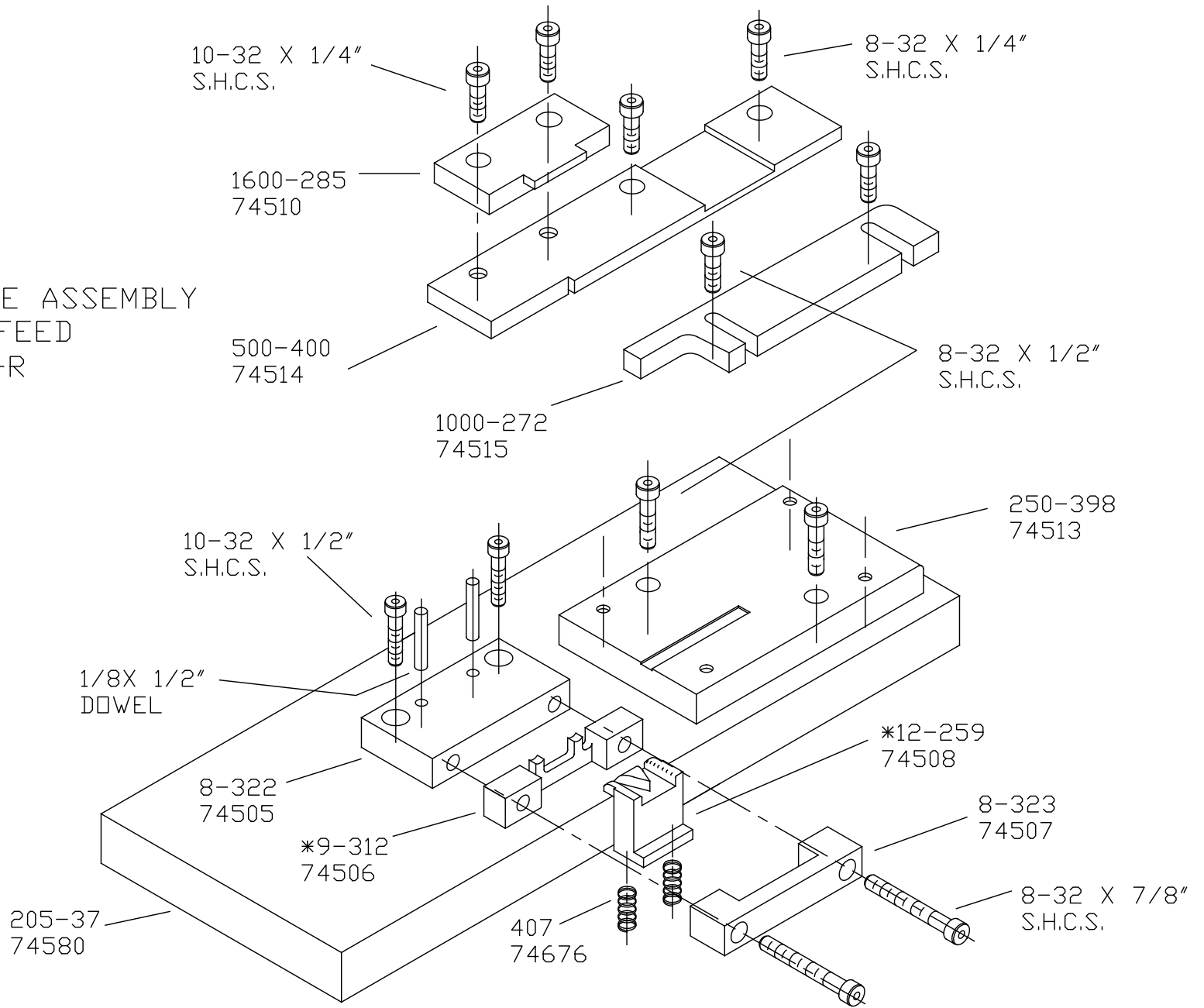
REFERENCE LIST:
D75-R
DUAL ATTACH FRONT
PAD RIGHT TO LEFT
ECC APPLICATOR
BILL OF MATERIAL NUMBER
79832

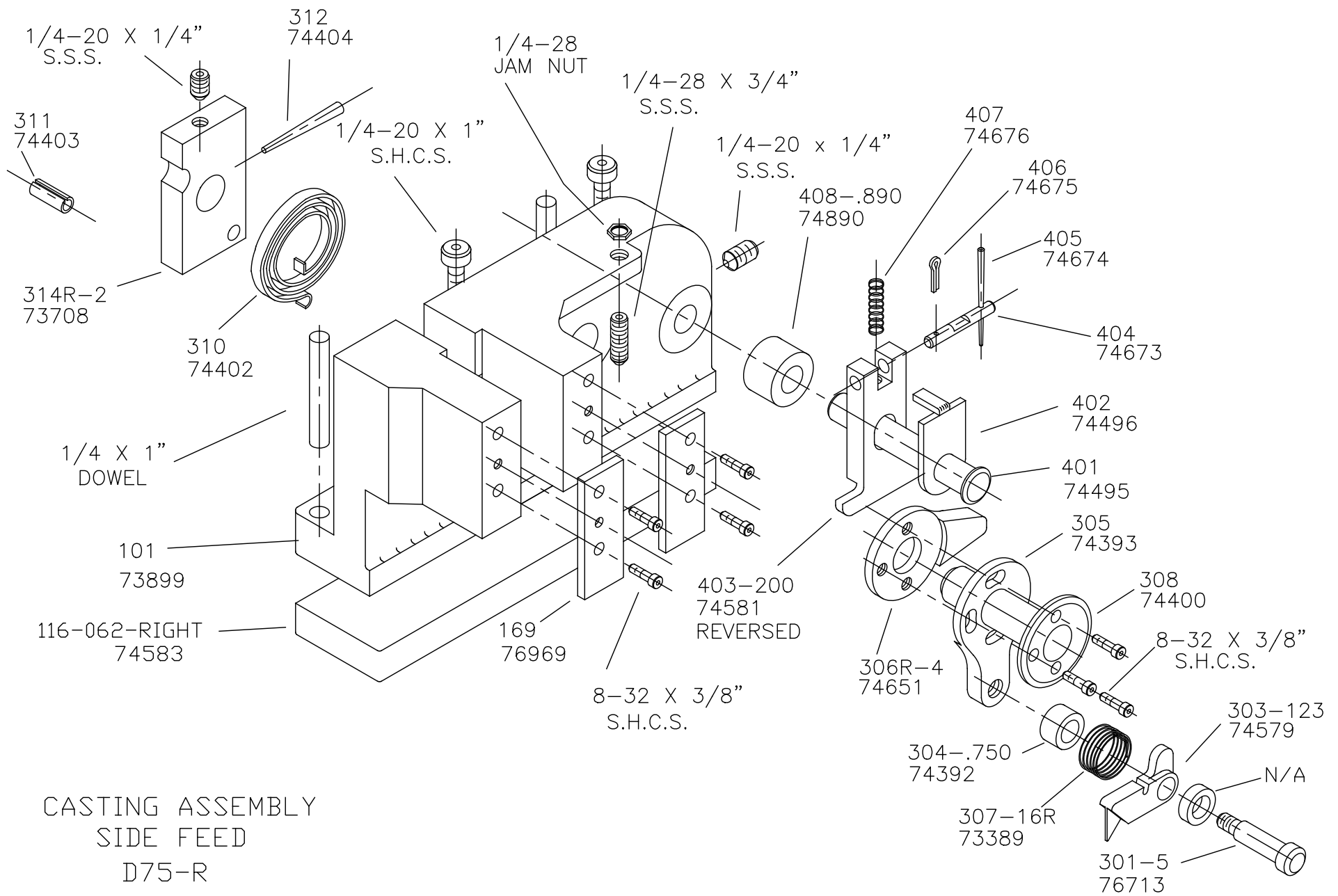
WARNING !
NEVER OPERATE
THIS OR ANY
APPLICATOR
WITHOUT SAFETY
GUARD IN POSITION.

PART CODE	PART NUMBER	QUANTITY	DESCRIPTION
74514	500-400	(1)	REAR GUIDE
74515	1000-272	(1)	FRONT GUIDE
74513	250-398	(1)	DIE PLATE
74580	205-37	(1)	BASE PLATE
74505	8-322	(1)	DIE
74506	*9-312	(1)	ANVIL\CUT-OFF DIE
74508	*12-259	(1)	PAD CUT-OFF
74507	8-323	(1)	PAD CUT-OFF RETAINER
74510	1600-285	(1)	STRIPPER
7619	1805	(1)	STOCK CHUTE
		N/A	GUARD SPACER
74584	176-44	(1)	GUARD
		(1)	10-32 X 1 1/4" S.H.C.S.
		(1)	1/4-28 X 1/2" S.H.C.S.
		(2)	1/8 X 1" DOWEL
		(1)	5/16 X 3/4" SHOULDER SCREW
		(1)	10-32 X 1/2" S.H.C.S.
		(2)	1/4-20 X 1/4" S.S.S.
		(2)	1/4 X 1" DOWEL
		(1)	1/4-28 JAM NUT
		(1)	1/4-28 X 3/4" S.S.S.
		(2)	1/4-20 X 1" S.H.C.S.
		(10)	8-32 X 3/8" S.H.C.S.
		(2)	10-32 X 1/4" S.H.C.S.
		(2)	8-32 X 1/4" S.H.C.S.
		(4)	8-32 X 1/2" S.H.C.S.
		(2)	1/8 X 1/2" DOWEL
		(2)	8-32 X 7/8" S.H.C.S.
		(2)	10-32 X 1/2" S.H.C.S.

NOTE: ITEMS MARKED WITH AN *
ARE HIGH WEAR ITEMS

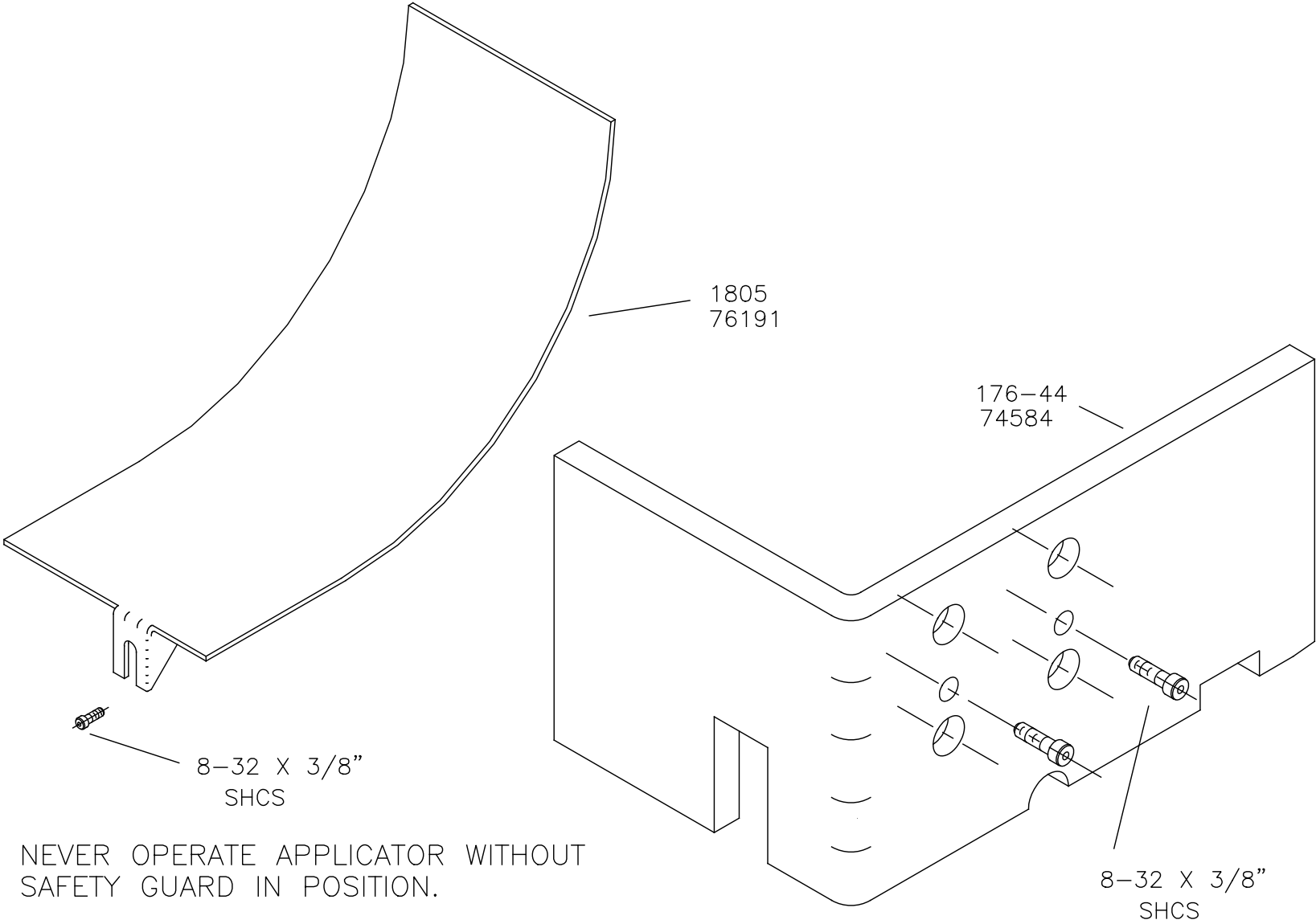
BASE PLATE ASSEMBLY
SIDE FEED
D75-R





CASTING ASSEMBLY
 SIDE FEED
 D75-R

CHUTE AND GUARD D75-R



NEVER OPERATE APPLICATOR WITHOUT
SAFETY GUARD IN POSITION.

