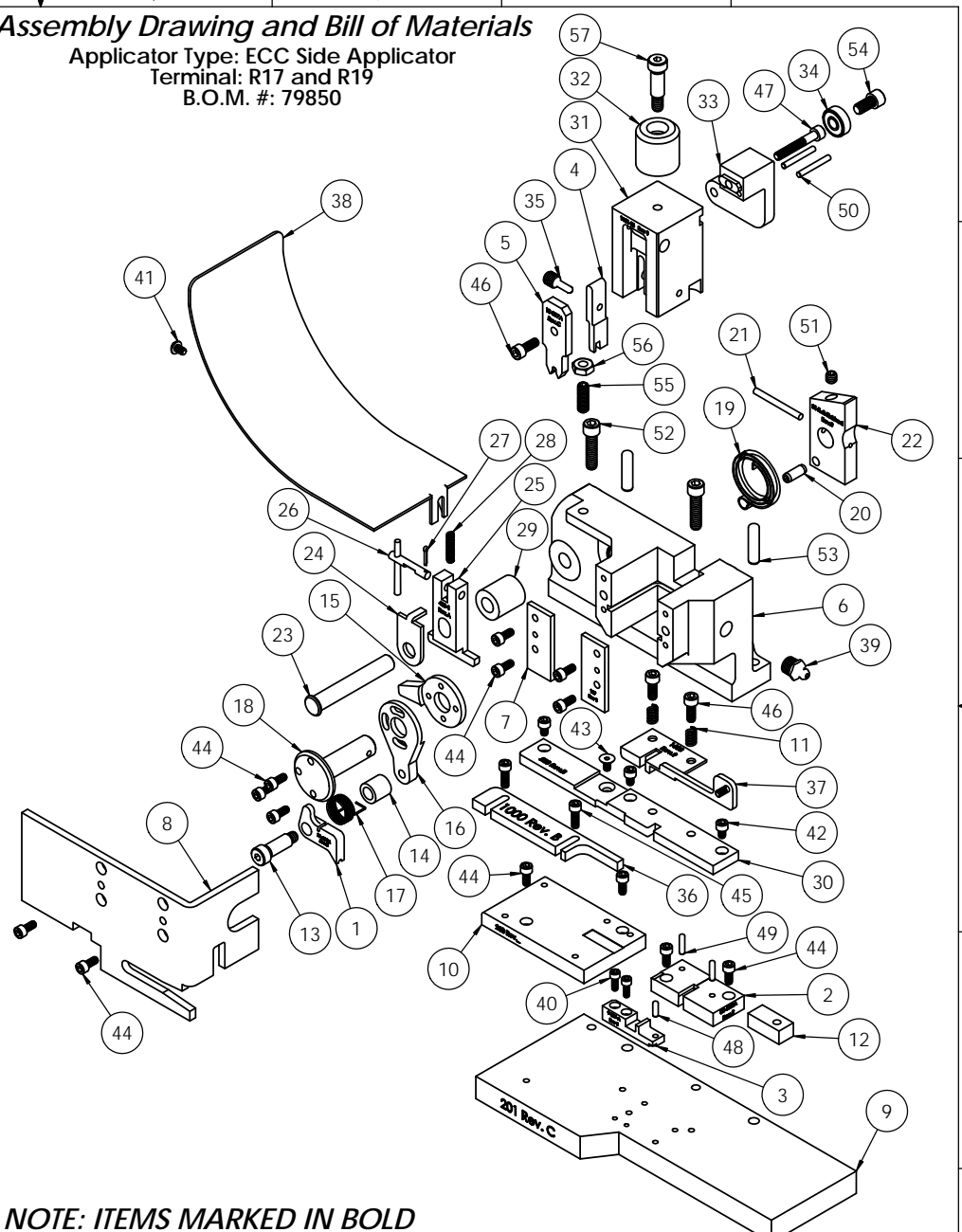


ITEM NO.	QTY.	Part Code	PART NUMBER	DESCRIPTION
1	1	70084	7A-R19A	Feed Finger
2	1	<b>70416</b>	<b>8B-R19A</b>	<b>Die</b>
3	1	<b>71139</b>	<b>9-R17-A</b>	<b>Anvil</b>
4	1	<b>71776</b>	<b>12-R19A</b>	<b>Cut-off Punch</b>
5	1	<b>72584</b>	<b>13-R17A</b>	<b>Wire Rolling Tool</b>
6	1	63899	101	Casting
7	2	69859	169	Gib
8	1	73922	176	Guard
9	1	73934	201	Base Plate
10	1	74519	263	Die Plate
11	2	73952	231	Stripper Spring
12	1	73955	235	Guide Spacer Block
13	1	76873	301-4	Shoulder Screw
14	1	66894	304-500	Feed Finger Spacer
15	1	74396	306	Feed Stop Arm
16	1	74393	305-Finished	Feed Finger Arm
17	1	67608	307-8	Spring
18	1	74400	308-Finished	Feed Shaft
19	1	74402	310	Cam Return Spring
20	1	74403	311	Roll Pin
21	1	74404	312	Cam Taper Pin
22	1	74410	314L-2-Finished	Cam
23	1	74495	401-Finished	Brake Shaft
24	1	74496	402	Spring Retainer
25	1	74498	403-1	Brake Body
26	1	74673	404_405as	Brake Cam Ass'y
27	1	74675	406	Cotter Pin
28	1	74676	407	Brake Spring
29	1	73358	408-844	Brake Spacer
30	1	75026	528	Rear Guide Rail
31	1	75496	1101-FS	Plunger
32	1	77918	1102-FS	Floating Shank
33	1	75710	1125-Finished	Cam Roller Bracket
34	1	75719	1142	Cam Roller Bearing
35	1	75729	1156	Plunger Screw
36	1	75392	1000	Adjustable Front Guide
37	1	75987	1603	Wire Stop/Stripper
38	1	76186	1800	Stock Chute
39	1	63506	McMaster-Carr #1095K11	1/8 NPT Grease Fitting
40	2	63209	6-32_38sh	#6-32 x 3/8" Socket Hd Cap Screw
41	1	63212	8-32_25bh	#8-32 x 1/4" Button Hd Cap Screw
42	3	63163	8-32_25sh	#8-32 x 1/4" Socket Hd Cap Screw
43	1		8-32_31fh	#8-32 x 5/16" Flat Head Socket Screw
44	13	63161	8-32_38sh	#8-32 x 3/8" Socket Hd Cap Screw
45	2	63164	8-32_50sh	#8-32 x 1/2" Socket Hd Cap Screw
46	3	63056	10-32_50sh	#10-32 x 1/2" Socket Hd Cap Screw
47	1	77396	10-32_1.25sh	#10-32 x 1 1/4" Socket Hd Cap Screw
48	1	70555	1.8_38dp	1/8" x 3/8" Dowel Pin
49	2	63507	1.8_50dp	Ø1/8" x 1/2" Dowel
50	2	62849	1.8_1.00dp	1/8" x 1" Dowel
51	2	63511	1.4-20_25ssf	1/4-20 x 1/4" Socket Hd Set Screw
52	2	63168	1.4-20_1.00sh	1/4-20 x 1" Socket Hd Cap Screw
53	2	63510	1.4_1.00dp	1/4 x 1" Dowel Pin
54	1	62184	1.4-28_50sh	1/4-28 x 1/2" Socket Hd Cap Screw
55	1	63513	1.4-28_75ss	1/4-28 x 3/4" Socket Set Screw
56	1	63512	1.4-28_jn	1/4-28 Jam Nut
57	1	78918	5.16_75shss	5/16 x 3/4" Shoulder Screw

## Assembly Drawing and Bill of Materials

Applicator Type: ECC Side Applicator  
Terminal: R17 and R19  
B.O.M. #: 79850



**NOTE: ITEMS MARKED IN BOLD TEXT ARE HIGH WEAR ITEMS**

REV	DESCRIPTION	DATE	BY
A	Removed 1150, 1155 SCJ	12/14	

ITEM NO.	PART No.	DESCRIPTION	MATERIAL SPECIFICATION	QTY	RECD
See Parts List		<b>PARIS LIST</b> ECCO ENGINEERED PRODUCTS 25 BELLOWS STREET WARRICK RI 02888 (401)-467-2400			
ECC Side Applicator		DRAWING NO. <b>R17 and R19</b> SCALE: 1:2 CHECKED BY: SCJ DATE: 1/21/14			