



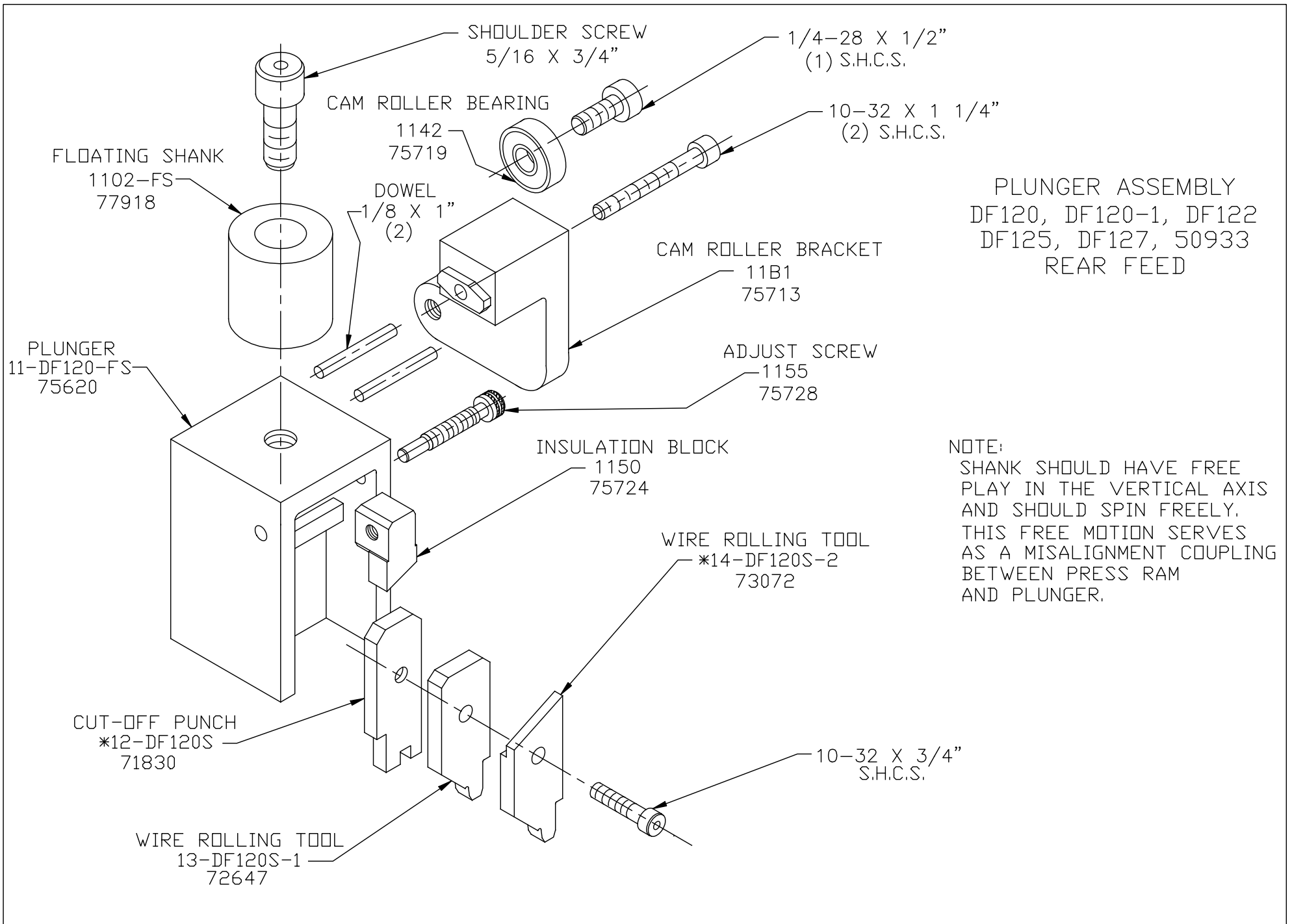
**REFERENCE LIST:  
DF120, DF122, DF120-1,  
DF125, DF127, 50933  
ECC APPLICATOR  
REAR FEED  
BILL OF MATERIAL NUMBER  
79857**

**WARNING ! NEVER  
OPERATE  
THIS OR ANY  
APPLICATOR  
WITHOUT SAFETY  
GUARD IN POSITION.**

PART CODE	PART NUMBER	QUANTITY	DESCRIPTION
75620	11-DF120S-FS	(1)	PLUNGER
77918	1102-FS	(1)	FLOATING SHANK
75728	1155	(1)	ADJUST SCREW
75724	1150	(1)	INSULATION BLOCK
71830	*12-DF120S	(1)	CUT-OFF PUNCH
72647	*13-DF120S-1	(1)	WIRE ROLLING TOOL
		N/A	TOOL RETAINER
73072	*14-DF120S-2	(1)	INSULATION ROLLING TOOL
75713	11B1	(1)	CAM ROLLER BRACKET
75719	1142	(1)	CAM ROLLER BEARING
74422	314L-9A	(1)	CAM BODY
77106	312-1	(1)	CAM TAPER PIN
74402	310	(1)	CLOCK SPRING
73706	311-1	(1)	ROLL PIN
76969	169	(2)	UNIVERSAL GIB
		N/A	STRIPPER
76663	101-113	(1)	TOP CASTING
77452	408-875	(1)	BRAKE BUSHING
74676	407	(1)	SPRING
74675	406	(1)	COTTER PIN
74674	405	(1)	TAPER PIN
74673	404	(1)	BRAKE CAM
74559	403-59	(1)	BRAKE BODY
74496	402	(1)	BRAKE SPRING RETAINER
74495	401	(1)	BRAKE SHAFT
74396	306	(1)	FEED FINGER STOP
77497	305-2	(1)	FEED FINGER ARM
76894	304-500	(1)	REAR SPACER
74400	308	(1)	FEED SHAFT
76860	307-8	(1)	SPRING
74325	303	(1)	FEED FINGER
		N/A	FRONT SPACER
76873	301-4	(1)	SHOULDER SCREW
71561	10R-DF120N	(1)	RIGHT GUIDE
76443	1000-299	(1)	LEFT GUIDE
70314	8A-DF120N	(1)	DIE PLATE
71203	*9-DF120N-1	(1)	ANVIL

**NOTE: ITEMS MARKED WITH AN \*  
ARE HIGH WEAR ITEMS**

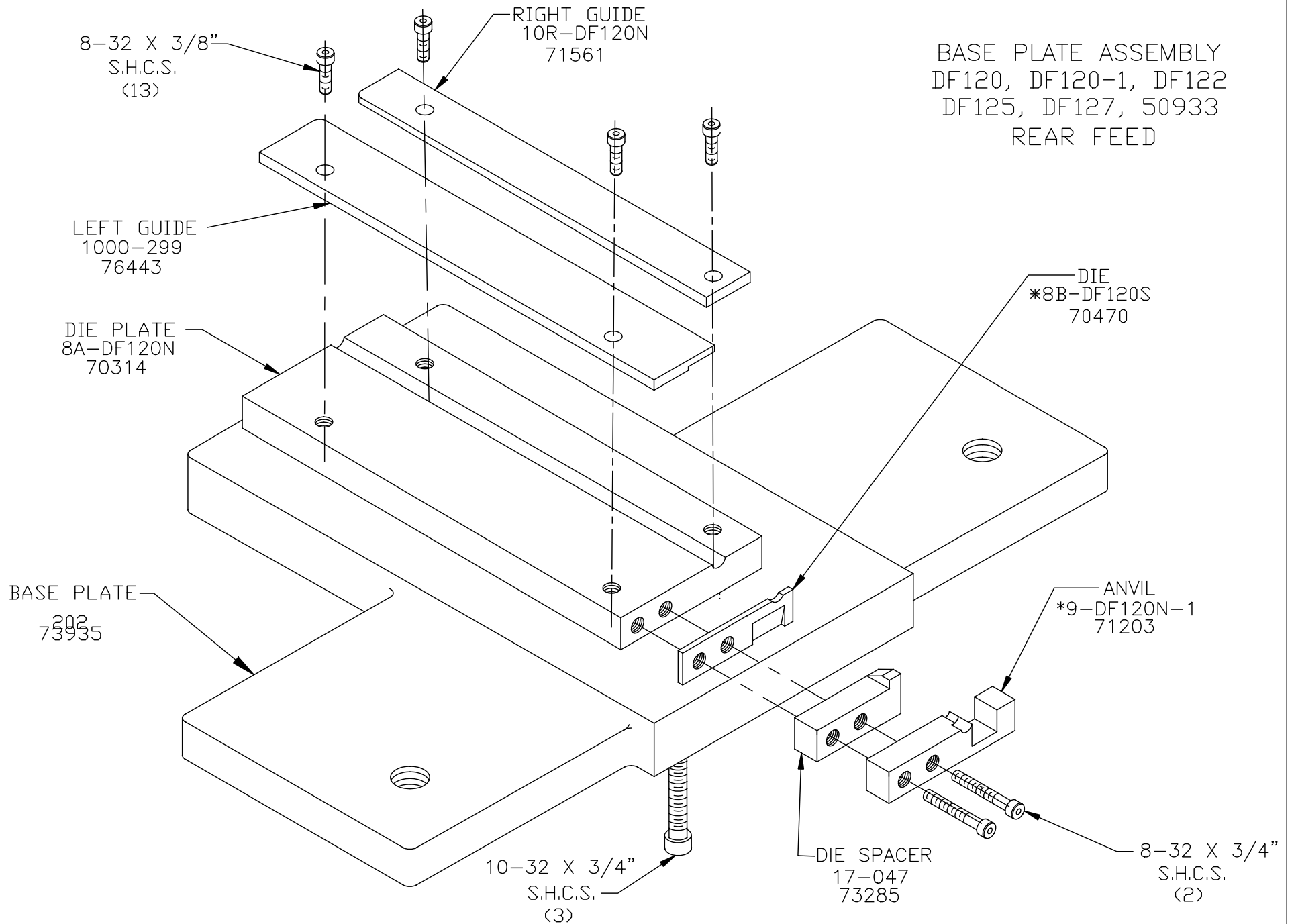




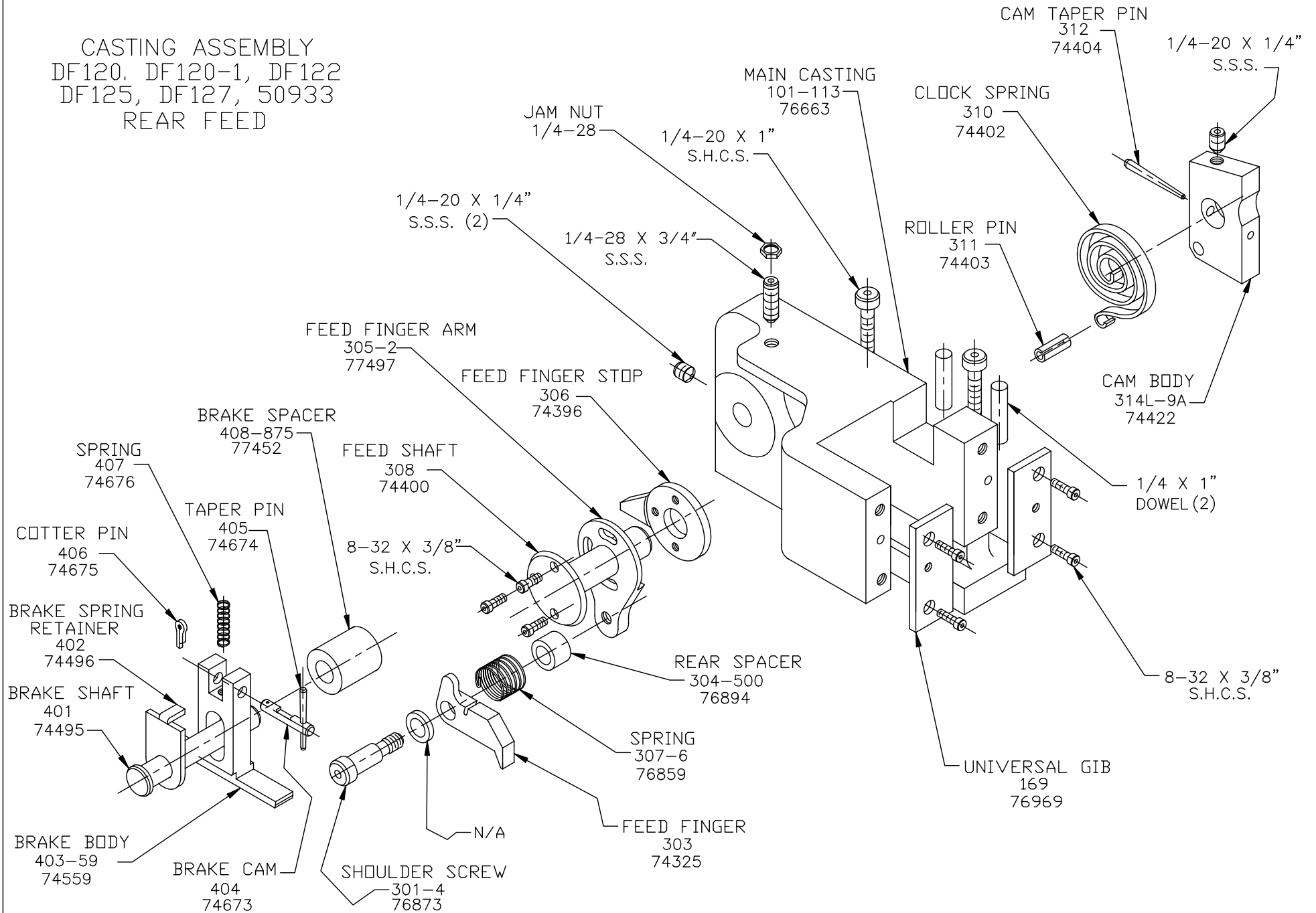
PLUNGER ASSEMBLY  
DF120, DF120-1, DF122  
DF125, DF127, 50933  
REAR FEED

NOTE:  
SHANK SHOULD HAVE FREE  
PLAY IN THE VERTICAL AXIS  
AND SHOULD SPIN FREELY.  
THIS FREE MOTION SERVES  
AS A MISALIGNMENT COUPLING  
BETWEEN PRESS RAM  
AND PLUNGER.

BASE PLATE ASSEMBLY  
DF120, DF120-1, DF122  
DF125, DF127, 50933  
REAR FEED

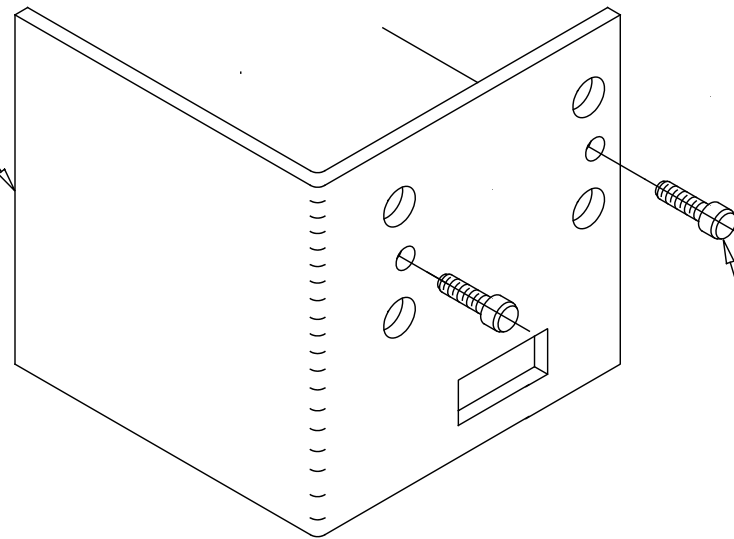


CASTING ASSEMBLY  
 DF120, DF120-1, DF122  
 DF125, DF127, 50933  
 REAR FEED



GUARD ASSEMBLY  
DF120, DF120-1, DF122  
DF125, DF127, 50933  
ECC REAR FEED

GUARD  
177  
77033



8-32 X 3/8" S.H.C.S. (2)

NEVER OPERATE APPLICATOR WITHOUT  
SAFETY GUARD IN POSITION.