



**REFERENCE LIST:  
R22E & R26E "F-CRIMP"  
ECC UPSTROKE  
REAR FEED APPLICATOR  
BILL OF MATERIAL NUMBER  
79863**

**WARNING !  
NEVER OPERATE  
THIS OR ANY  
APPLICATOR  
WITHOUT SAFETY  
GUARD IN POSITION.**

PART CODE	PART NUMBER	QUANTITY	DESCRIPTION
75631	11-106-FS	(1)	PLUNGER
77918	1102-FS	(1)	FLOATING SHANK
75728	1155	(1)	ADJUSTING BLOCK SCREW
75724	1150	(1)	INSULATION BLOCK
71584	*12-011	(1)	CUT-OFF PUNCH
73810	17-270	(1)	SPACER
72674	*13-D150A	(1)	WIRE ROLLING TOOL
		N/A	TOOL RETAINER
72990	*14-012	(1)	INSULATION ROLLING TOOL
75713	11B1	(1)	CAM ROLLER BRACKET
75719	1142	(1)	CAM ROLLER BEARING
74421	314-9	(1)	CAM BODY
77106	312-1	(1)	CAM TAPER PIN
74402	310	(1)	CLOCK SPRING
73706	311-1	(1)	ROLL PIN
76969	169	(2)	UNIVERSAL GIBS
		N/A	GIB
73966	1600-278	(1)	WIRE STRIPPER
73903	101-35	(1)	TOP CASTING
73216	408-720	(1)	BRAKE BUSHING
74676	407	(1)	SPRING
74675	406	(1)	COTTER PIN
74674	405	(1)	BRAKE TAPER PIN
74673	404	(1)	BRAKE CAM
74535	403-35	(1)	BRAKE BODY
74496	402	(1)	BRAKE SPRING RETAINER
74495	401	(1)	BRAKE SHAFT
74396	306	(1)	FEED FINGER STOP
74393	305	(1)	FEED FINGER ARM
73214	304-340	(1)	REAR SPACER
74400	308	(1)	FEED SHAFT
76788	307-5	(1)	SPRING
74334	303-9	(1)	FEED FINGER
73399	302-160	(1)	FRONT SPACER
76873	301-4	(1)	SHOULDER SCREW
73808	10R-R22E	(1)	RIGHT GUIDE
73809	10L-R22E	(1)	LEFT GUIDE

**NOTE: ITEMS MARKED WITH AN \*  
ARE HIGH WEAR ITEMS**





**REFERENCE LIST:  
R22E & R26E "F-CRIMP"  
ECC UPSTROKE  
REAR FEED APPLICATOR  
BILL OF MATERIAL NUMBER  
79863**

**WARNING !  
NEVER OPERATE  
THIS OR ANY  
APPLICATOR  
WITHOUT SAFETY  
GUARD IN POSITION.**

PART CODE	PART NUMBER	QUANTITY	DESCRIPTION

**NOTE: ITEMS MARKED WITH AN \*  
ARE HIGH WEAR ITEMS**

10L-R22E  
73809

8-32 X 3/8"  
SHCS

250-192  
74150

202  
73935

8-32 X 1/2"  
SHCS

1600-278  
73966

10R-R22E  
73808

BASE PLATE ASSEMBLY  
R22E, R24E, R26E, R28E  
REAR FEED

\*8-068  
70187

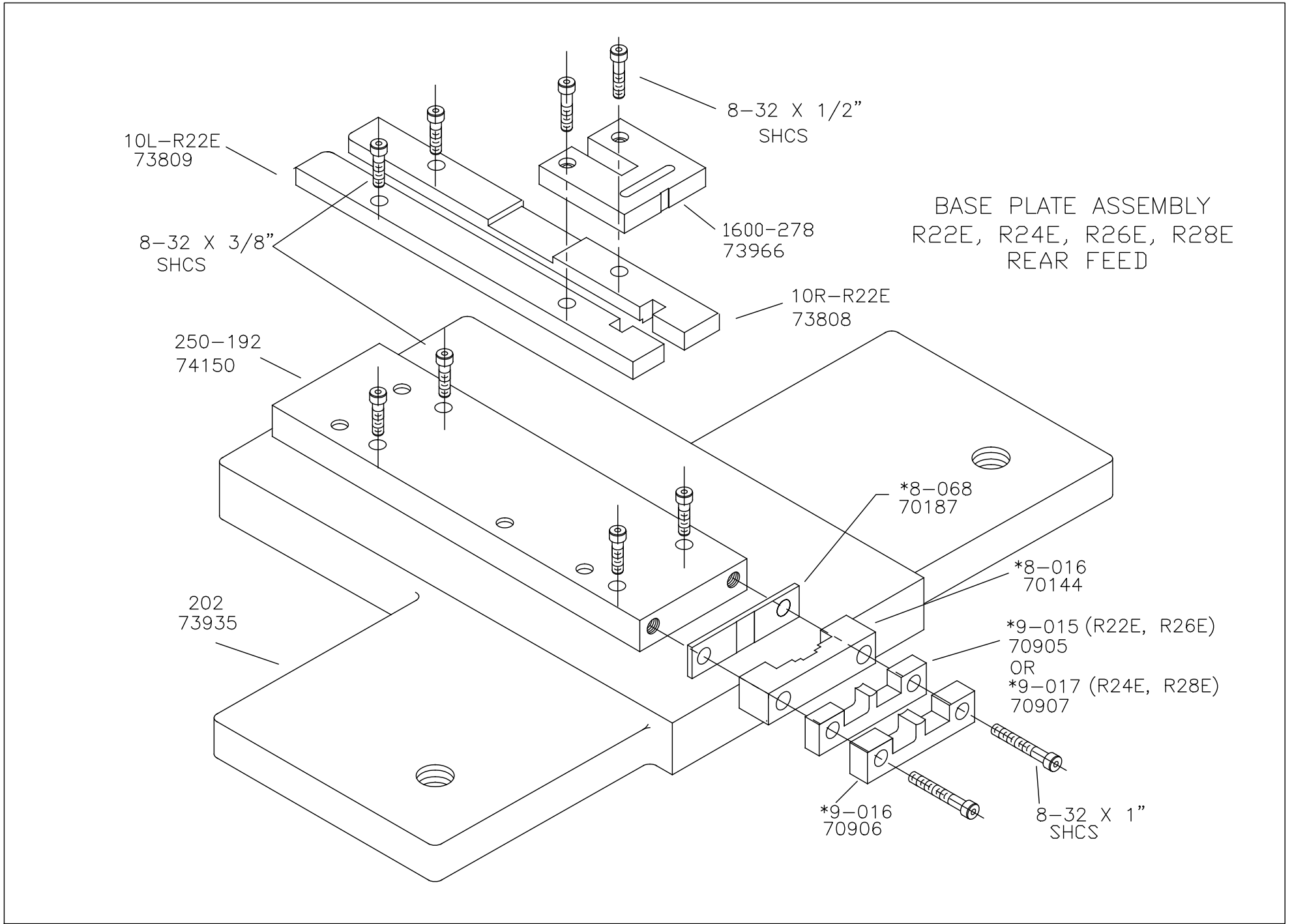
\*8-016  
70144

\*9-015 (R22E, R26E)  
70905

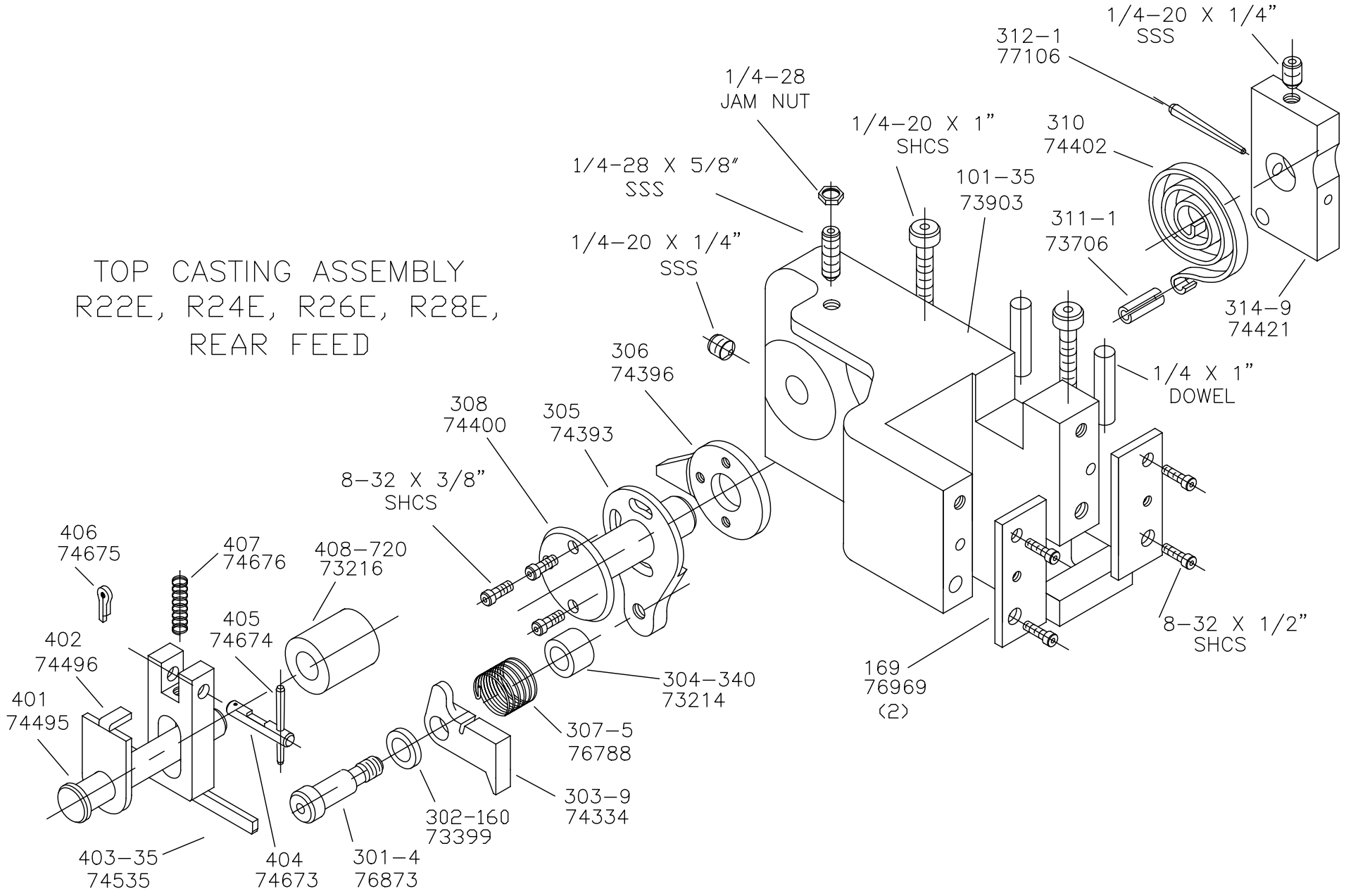
OR  
\*9-017 (R24E, R28E)  
70907

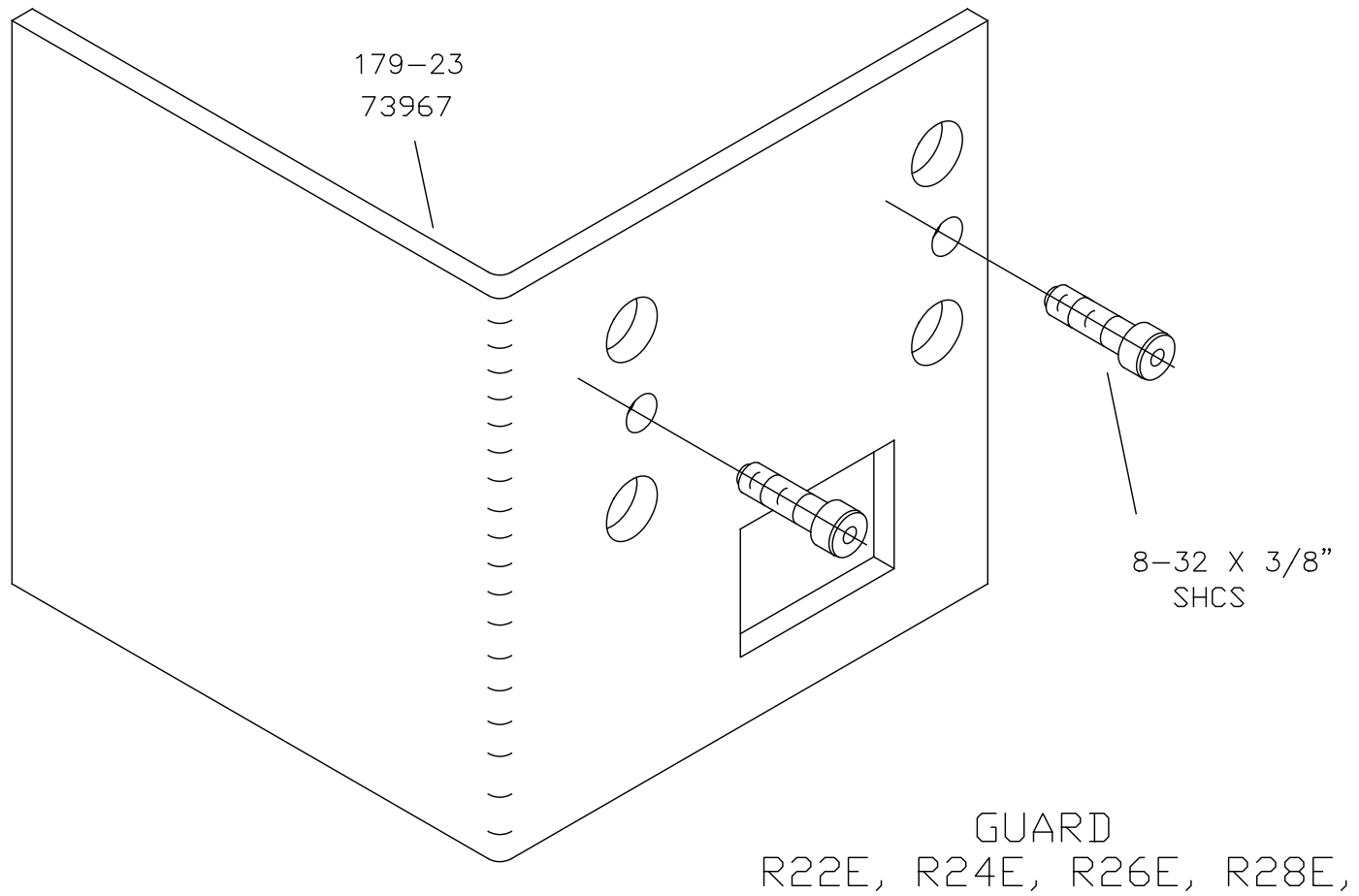
\*9-016  
70906

8-32 X 1"  
SHCS

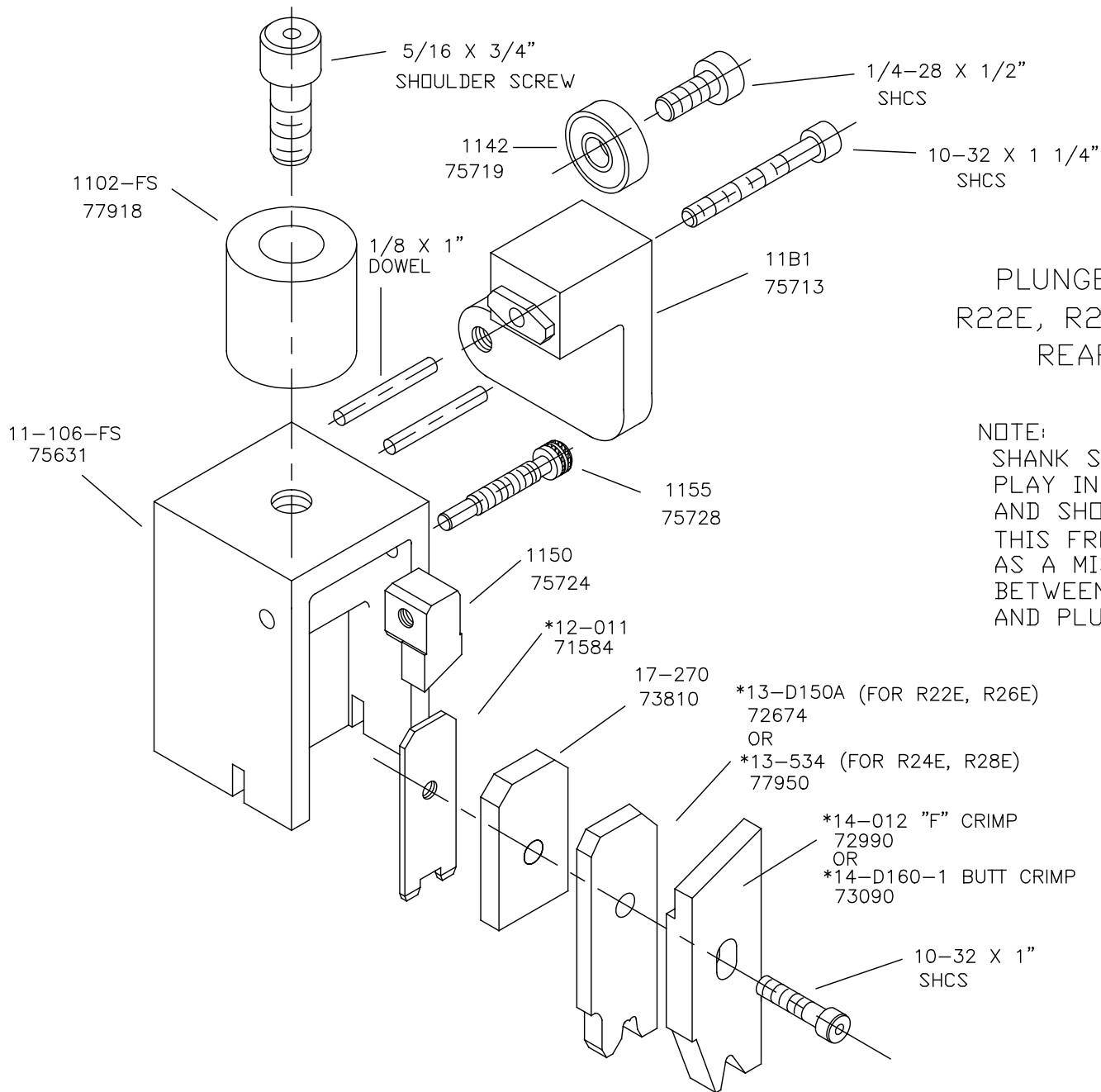


TOP CASTING ASSEMBLY  
R22E, R24E, R26E, R28E,  
REAR FEED





NEVER OPERATE APPLICATOR WITHOUT  
SAFETY GUARD IN POSITION.



PLUNGER ASSEMBLY  
R22E, R24E, R26E, R28E  
REAR FEED

NOTE:  
SHANK SHOULD HAVE FREE  
PLAY IN THE VERTICAL AXIS  
AND SHOULD SPIN FREELY.  
THIS FREE MOTION SERVES  
AS A MISALIGNMENT COUPLING  
BETWEEN PRESS RAM  
AND PLUNGER.