



REFERENCE LIST:  
 R16  
 ECC APPLICATOR  
 BILL OF MATERIAL NUMBER  
 79882

**WARNING !**  
 NEVER OPERATE  
 THIS OR ANY  
 APPLICATOR  
 WITHOUT SAFETY  
 GUARD IN POSITION.

PART CODE	PART NUMBER	QUANTITY	DESCRIPTION
75495	1100-FS	(1)	PLUNGER
77918	1102-FS	(1)	FLOATING SHANK
		N/A	CUT-OFF SCREW
75728	1155	(1)	INSULATION SCREW
75724	1150	(1)	INSULATION BLOCK
75710	1125	(1)	CAM ROLLER BRACKET
75719	1142	(1)	CAM ROLLER BEARING
71770	*12-R16-2	(1)	CUT-OFF PUNCH
72579	*13-R16-2	(1)	WIRE ROLLING TOOL
73090	*14-D160-1	(1)	INSULATION ROLLING TOOL
74410	314-2	(1)	CAM
74403	311	(1)	SPRING PIN
74404	312	(1)	CAM TAPER PIN
74402	310	(1)	CAM RETURN SPRING
73899	101	(1)	TOP CASTING
76969	169	(2)	UNIVERSAL GIBS
74675	406	(1)	COTTER PIN
74676	407	(1)	BRAKE SPRING
77286	408-687	(1)	BRAKE BUSHING
74674	405	(1)	TAPER PIN
74673	404	(1)	BRAKE CAM
74498	403-1	(1)	BRAKE BODY
74496	402	(1)	SPRING RETAINER
74495	401	(1)	BRAKE SHAFT
74396	306	(1)	FEED FINGER STOP
74393	305	(1)	FEED FINGER ARM
74400	308	(1)	FEED SHAFT
76894	304-500	(1)	REAR SPACER
76860	307-8	(1)	SPRING
70083	7A-R15-2	(1)	FEED FINGER
		N/A	FRONT SPACER
76873	301-4	(1)	SHOULDER SCREW
73952	231	(2)	STRIPPER SPRING
75985	1602	(1)	WIRE STRIPPER / STOP
73955	235	(1)	GUIDE SPACER BLOCK
75019	521	(1)	REAR / RIGHT GUIDE

**NOTE:** ITEMS MARKED WITH AN \*  
 ARE HIGH WEAR ITEMS



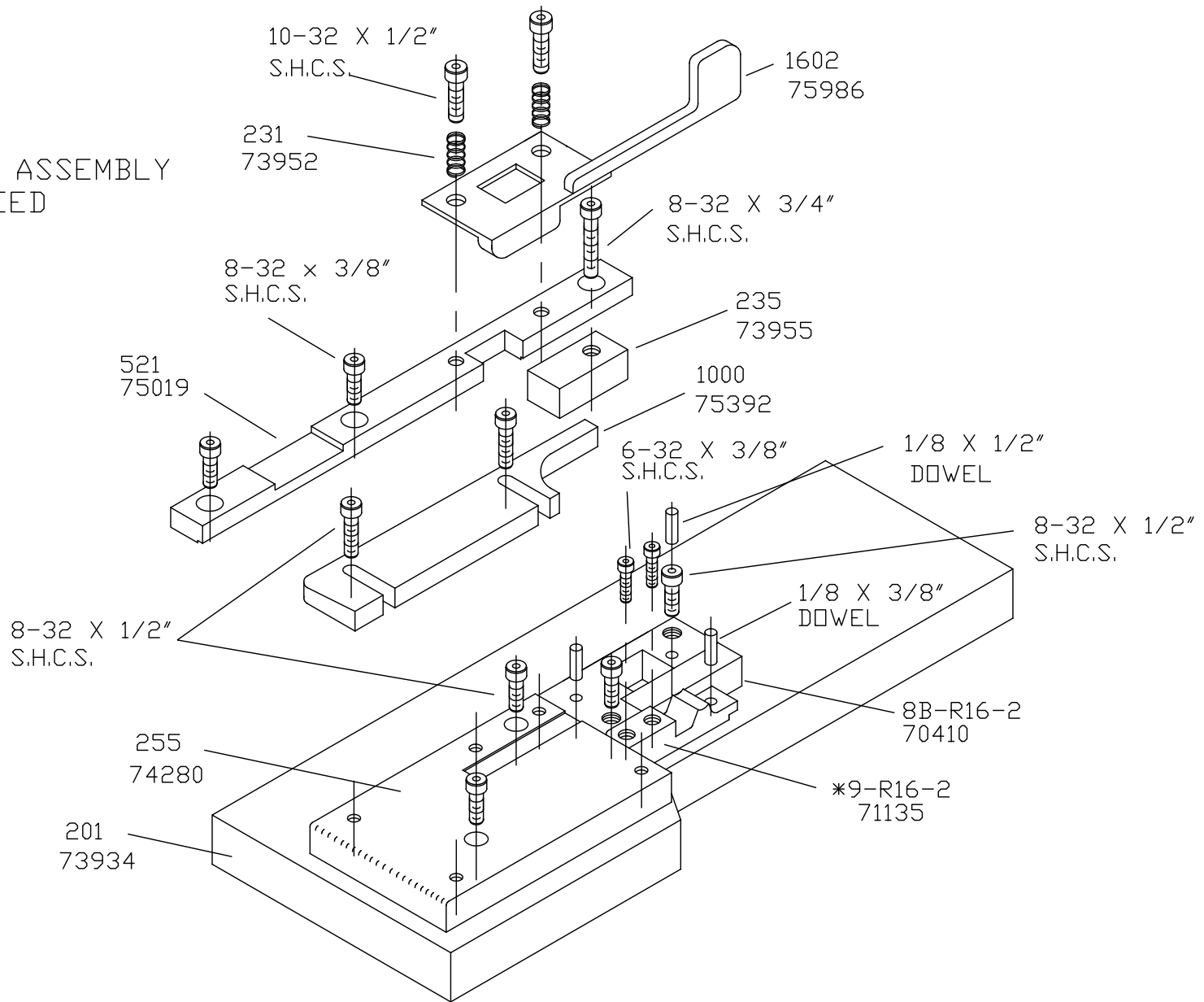
REFERENCE LIST:  
 R16  
 ECC APPLICATOR  
 BILL OF MATERIAL NUMBER  
 79882

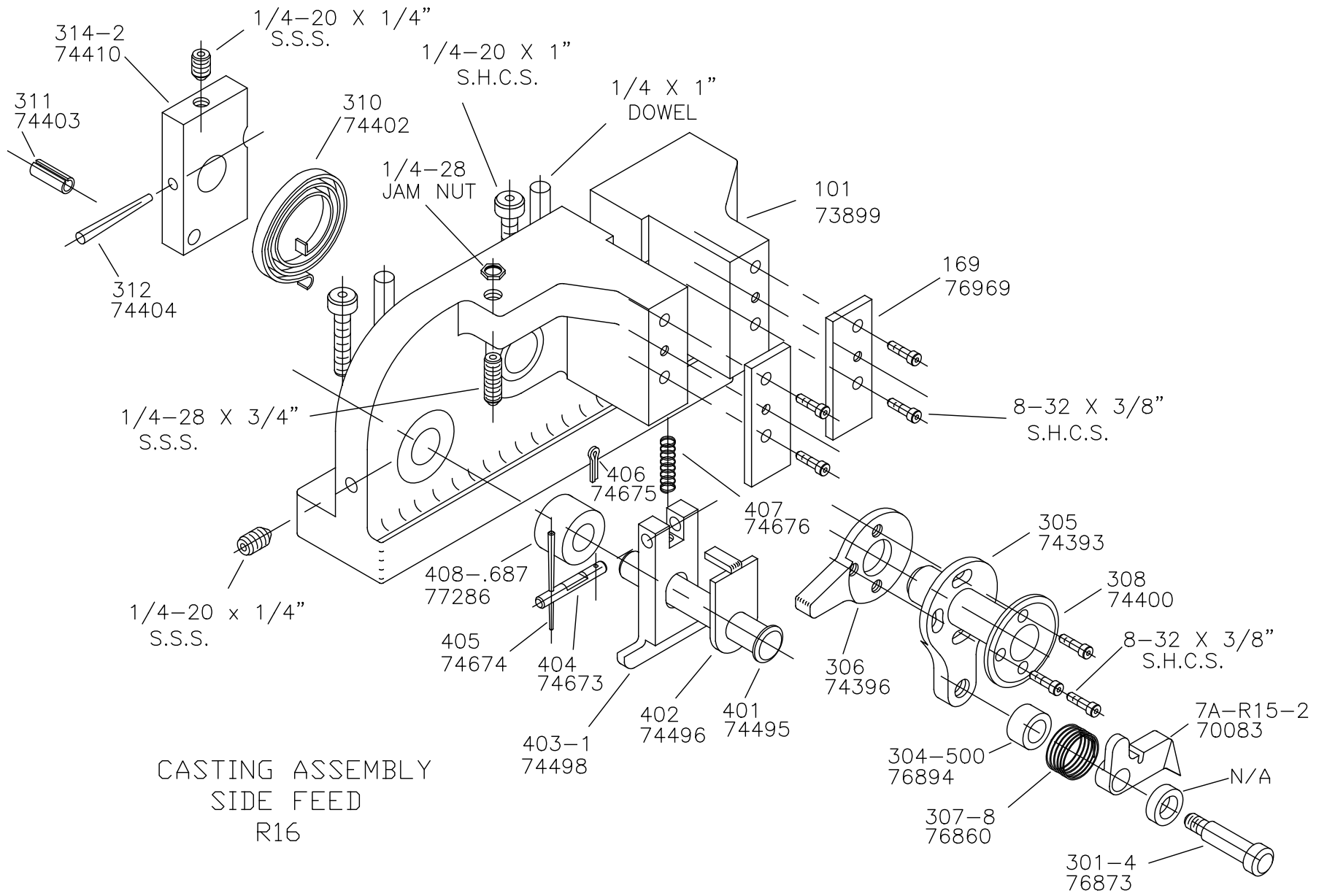
**WARNING !**  
 NEVER OPERATE  
 THIS OR ANY  
 APPLICATOR  
 WITHOUT SAFETY  
 GUARD IN POSITION.

PART CODE	PART NUMBER	QUANTITY	DESCRIPTION
75392	1000	(1)	FRONT / LEFT GUIDE
74280	255	(1)	DIE PLATE
73934	201	(1)	BASE PLATE
70410	8B-R16-2	(1)	DIE
71135	9-R16-2	(1)	ANVIL
73528	6-047-50	(1)	CUT-OFF SPRING
76186	1800	(1)	STOCK CHUTE
74492	GS-625	(1)	GUARD SPACER
73922	176	(1)	GUARD
		(1)	10-32 X 1 1/4" S.H.C.S.
		(1)	1/4-28 X 1/2" S.H.C.S.
		(2)	1/8 X 1" DOWEL
		(1)	5/16 X 3/4" SHOULDER SCREW
		(2)	1/4-28 X 3/4" S.S.S.
		(2)	1/4-20 X 1" S.H.C.S.
		(2)	1/4 X 1" DOWEL
		(1)	1/4-28 JAM NUT
		(1)	1/4-20 X 1/4" S.H.C.S.
		(10)	8-32 X 3/8" S.H.C.S.
		(3)	10-32 X 1/2" S.H.C.S.
		(1)	8-32 X 3/4" S.H.C.S.
		(2)	6-32 X 3/8" S.H.C.S.
		(6)	8-32 X 1/2" S.H.C.S.
		(1)	1/8 X 1/2" DOWEL
		(2)	1/8 X 3/8" DOWEL

**NOTE:** ITEMS MARKED WITH AN \*  
 ARE HIGH WEAR ITEMS

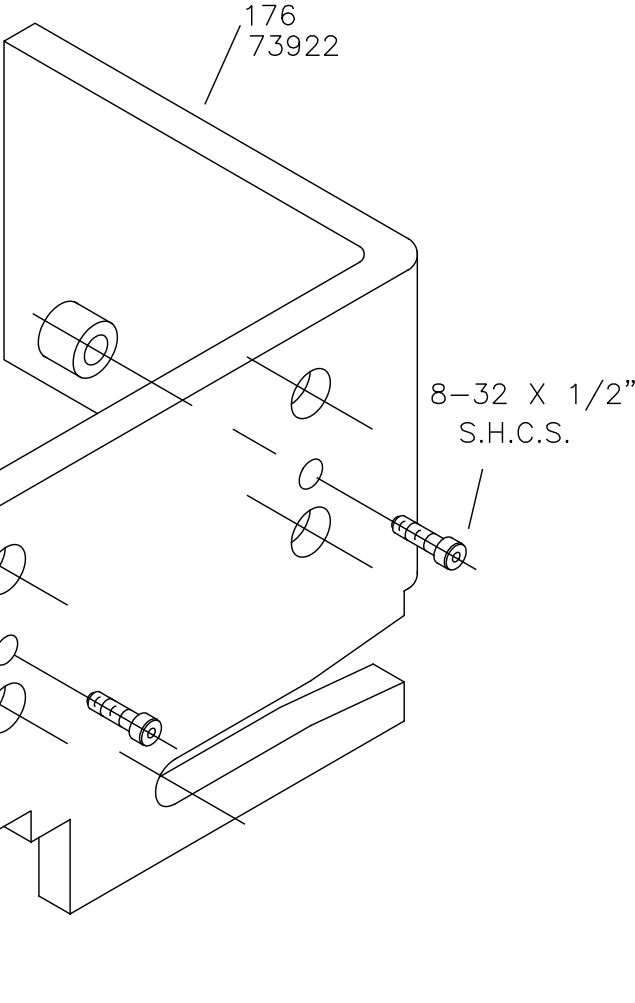
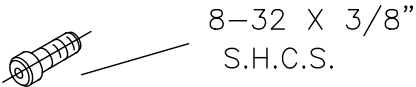
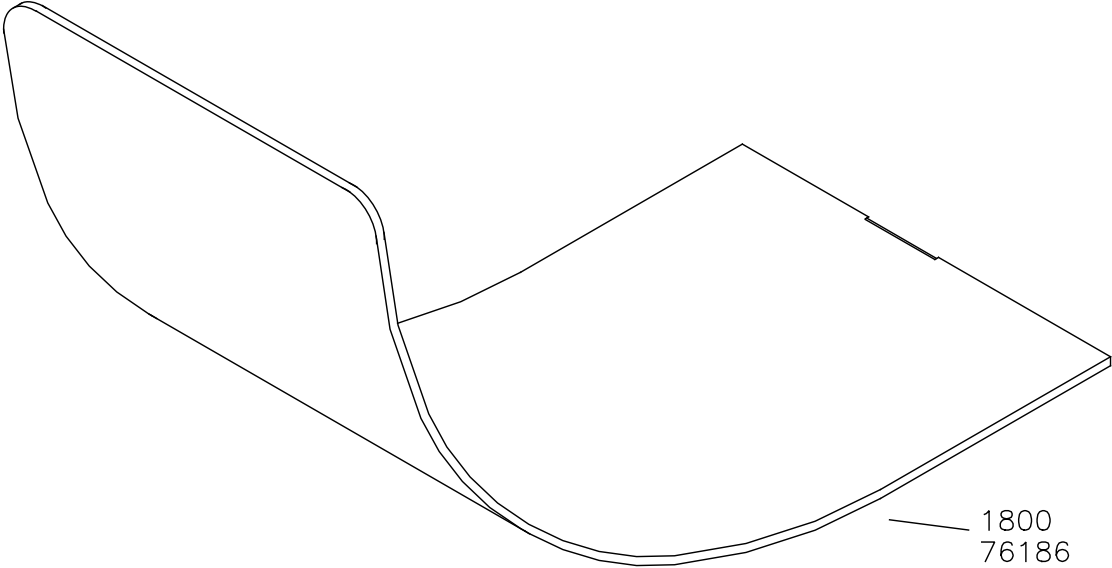
BASE PLATE ASSEMBLY  
SIDE FEED  
R16





CASTING ASSEMBLY  
 SIDE FEED  
 R16

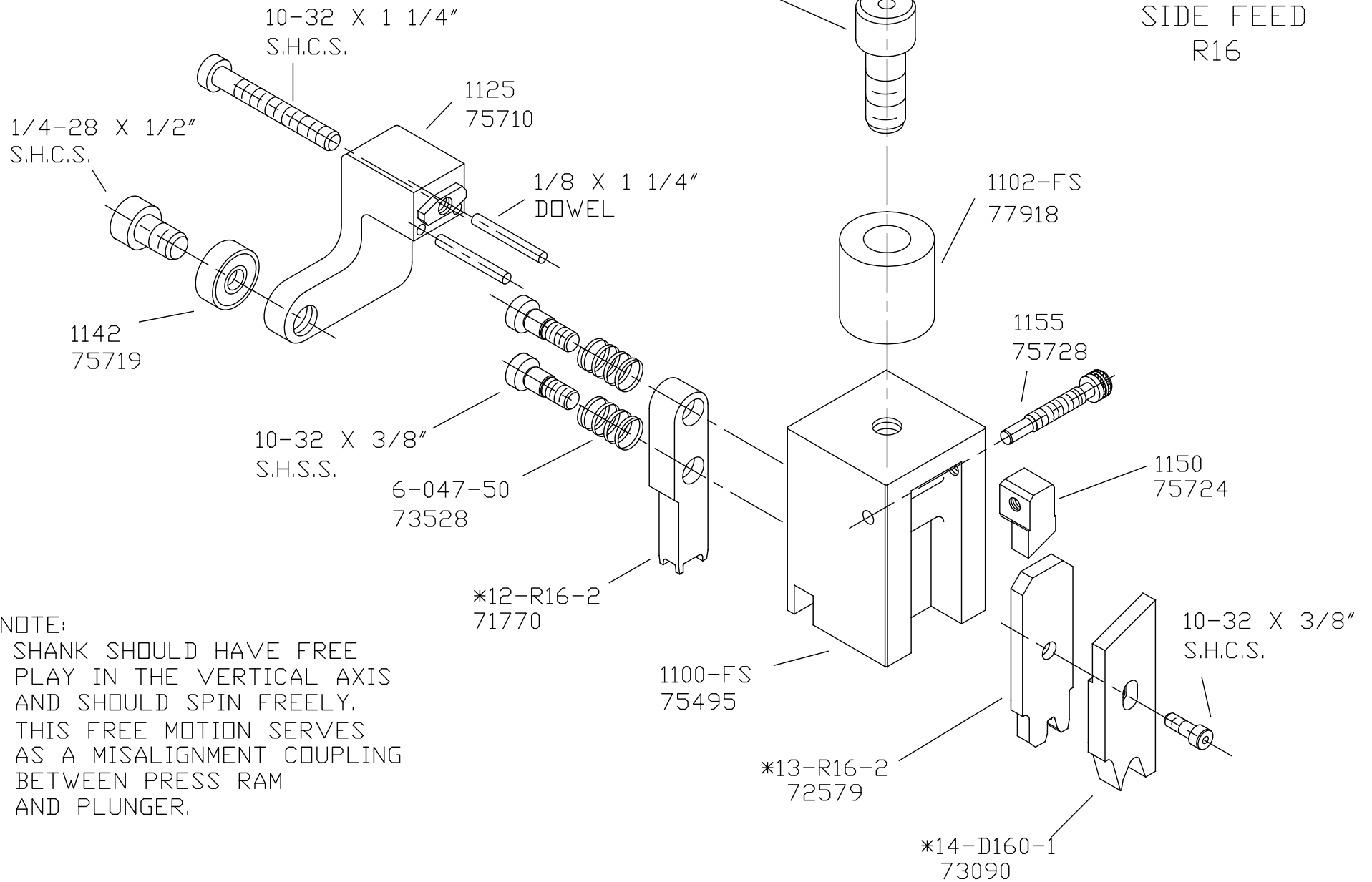
# CHUTE AND GUARD R16



NEVER OPERATE APPLICATOR WITHOUT  
SAFETY GUARD IN POSITION.

PLUNGER ASSEMBLY  
SIDE FEED  
R16

5/16 X 3/4"  
SHOULDER SCREW



NOTE:  
SHANK SHOULD HAVE FREE  
PLAY IN THE VERTICAL AXIS  
AND SHOULD SPIN FREELY.  
THIS FREE MOTION SERVES  
AS A MISALIGNMENT COUPLING  
BETWEEN PRESS RAM  
AND PLUNGER.