



REFERENCE LIST:
 S120N DUAL
 ECC APPLICATOR
 BILL OF MATERIAL NUMBER
 79890

WARNING !
 NEVER OPERATE
 THIS OR ANY APPLICATOR
 WITHOUT SAFETY GUARD
 IN POSITION.

PART CODE	PART NUMBER	QUANTITY	DESCRIPTION
75579	11065-FS	(1)	PLUNGER
77918	1102-FS	(1)	FLOATING SHANK
75728	1155	(1)	ADJUST SCREW
75725	1150-1	(1)	INSULATION BLOCK
73861	*12-254	(1)	CUT-OFF PUNCH
		N/A	CUT-OFF PUNCH DRIVER
73862	*13-286	(1)	WIRE ROLLING TOOL
		N/A	TOOL RETAINER
73074	*14-S120 L&R	(1)	INSULATION ROLLING TOOL
75715	1125-D	(1)	CAM ROLLER BRACKET
75719	1142	(2)	CAM ROLLER BEARING
74410	314-2	(1)	CAM BODY
73708	314R-2	(1)	CAM BODY
74404	312	(2)	CAM TAPER PIN
74402	310	(2)	CLOCK SPRING
74403	311	(2)	ROLL PIN
76969	169	(2)	UNIVERSAL GIB
		N/A	GIB
D-101	73210	(1)	TOP CASTING
77154	408-812	(2)	BRAKE SPACER
74676	407	(2)	SPRING
74675	406	(2)	COTTER PIN
74674	405	(2)	TAPER PIN
74673	404	(2)	BRAKE CAM
74498	403-1	(2)	BRAKE BODY
74496	402	(2)	BRAKE SPRING RETAINER
74495	401	(2)	BRAKE SHAFT
74396	306	(1)	FEED FINGER STOP
77607	306-R	(1)	FEED FINGER STOP
74393	305	(2)	FEED FINGER ARM
73305	304-437	(2)	REAR SPACER
74400	308	(2)	FEED SHAFT
76721	307-7	(1)	SPRING
73917	307-7R	(1)	SPRING
70090	7A-S125	(2)	FEED FINGER
77284	302-062	(2)	FRONT SPACER
76873	301-4	(2)	SHOULDER SCREW

**NOTE: ITEMS MARKED WITH AN *
 ARE HIGH WEAR ITEMS**



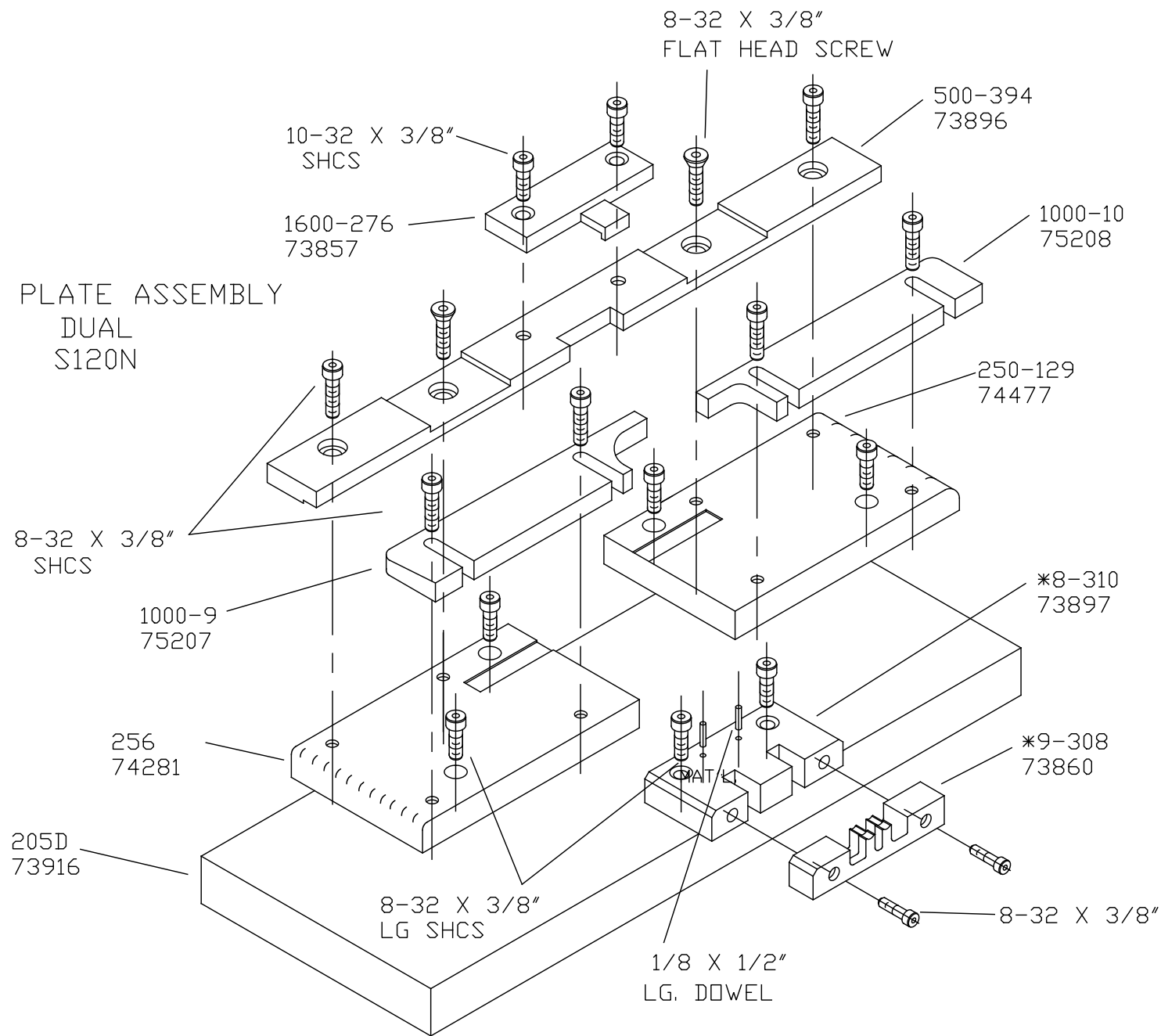
**REFERENCE LIST:
S120N DUAL
ECC APPLICATOR
BILL OF MATERIAL NUMBER
79890**

**WARNING !
NEVER OPERATE
THIS OR ANY APPLICATOR
WITHOUT SAFETY GUARD
IN POSITION.**

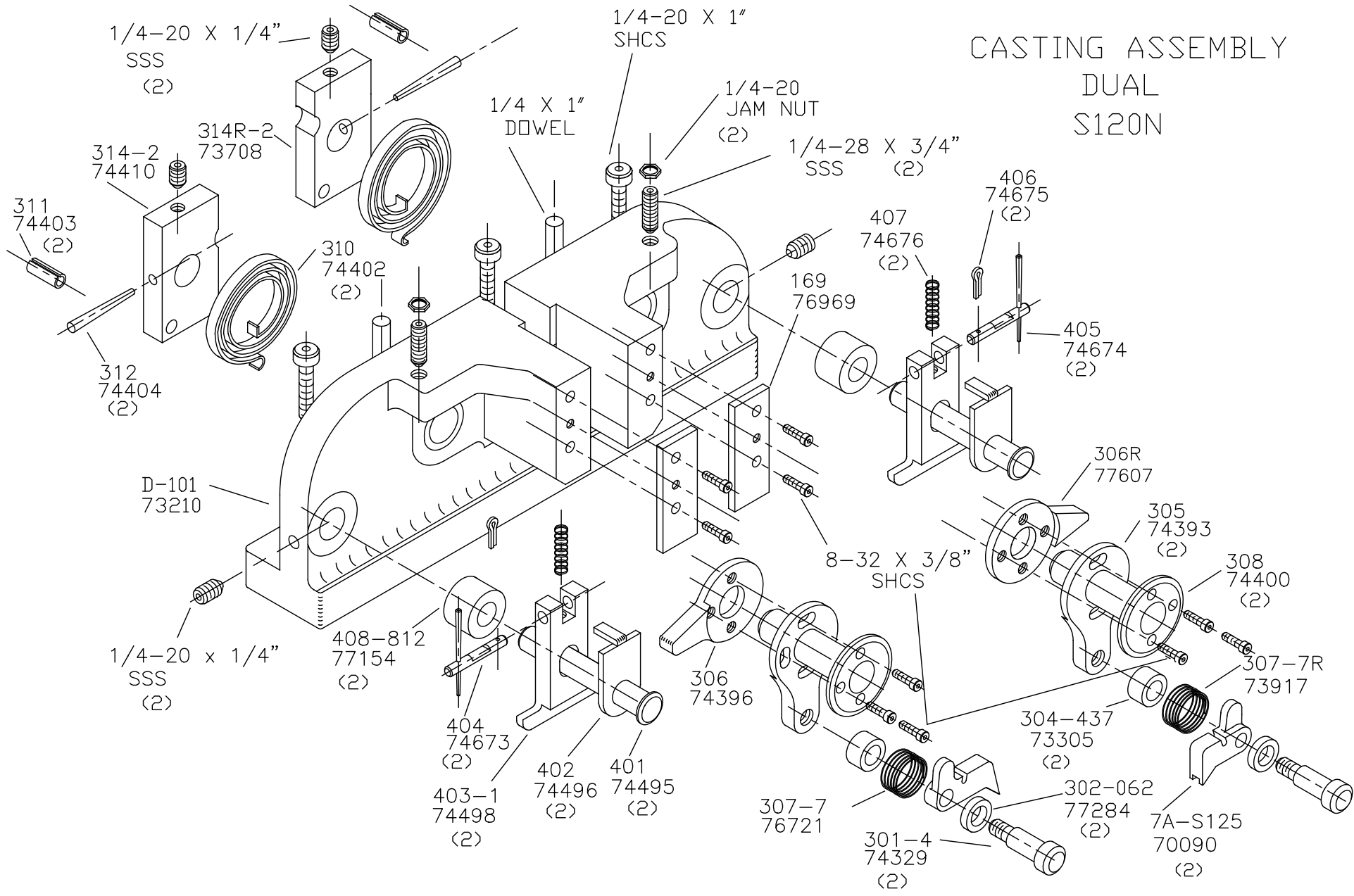
PART CODE	PART NUMBER	QUANTITY	DESCRIPTION
75207	1000-9	(1)	LEFT FRONT GUIDE
75208	1000-10	(1)	RIGHT FRONT GUIDE
73896	500-394	(1)	REAR GUIDE
74281	256	(1)	DIE PLATE
74477	250-129	(1)	DIE PLATE (REAR)
73860	*9-308	(1)	ANVIL
73897	*8-310	(1)	DIE
		N/A	CUT-OFF PUNCH PAD
		N/A	SPRING
73857	1600-276	(1)	WIRE STRIPPER
73916	205D	(1)	BASE PLATE
		N/A	GUARD SPACER
73897	199-31	(1)	GUARD
76186	1800	(1)	STOCK CHUTE
76191	1805	(1)	STOCK CHUTE
		(1)	10-32 X 1 1/4" S.H.C.S.
		(2)	1/4-28 X 1/2" S.H.C.S.
		(2)	1/8 X 1" DOWEL
		(1)	5/16 X 3/4" SHOULDER SCREW
		(2)	1/4-28 X 3/4" S.S.S.
		(3)	1/4-20 X 1" S.H.C.S.
		(2)	1/4 X 1" DOWEL
		(2)	1/4-28 JAM NUT
		(4)	1/4-20 X 1/4" S.S.S.
		(34)	8-32 X 3/8" S.H.C.S.
		(2)	8-32 X 3/8" FLAT HEAD SCREW
		(2)	10-32 X 3/8" S.H.C.S.
		(2)	1/8 X 1/2" DOWEL
		(1)	10-32 X 3/4" SHCS

**NOTE: ITEMS MARKED WITH AN *
ARE HIGH WEAR ITEMS**

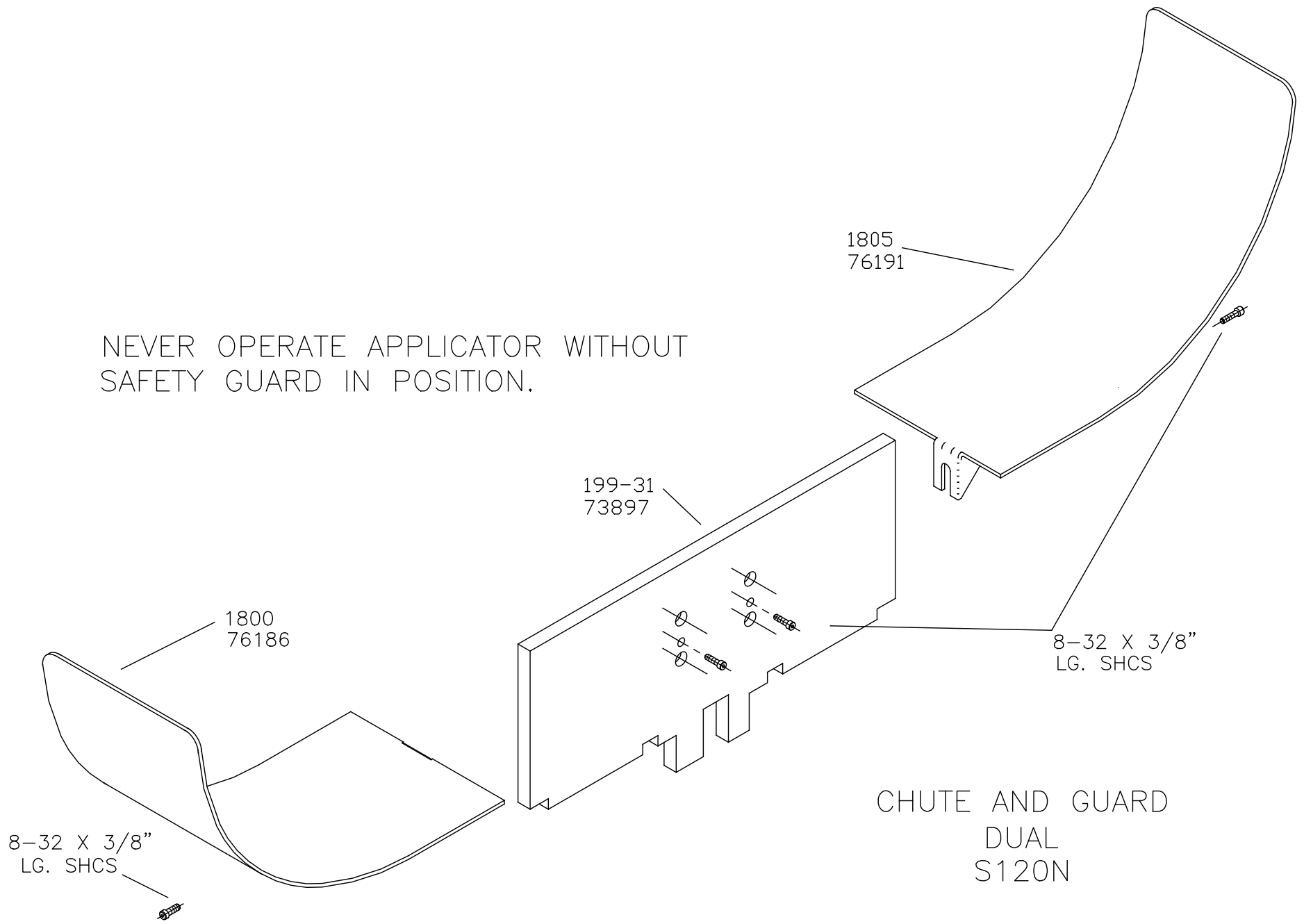
BASE PLATE ASSEMBLY
DUAL
S120N

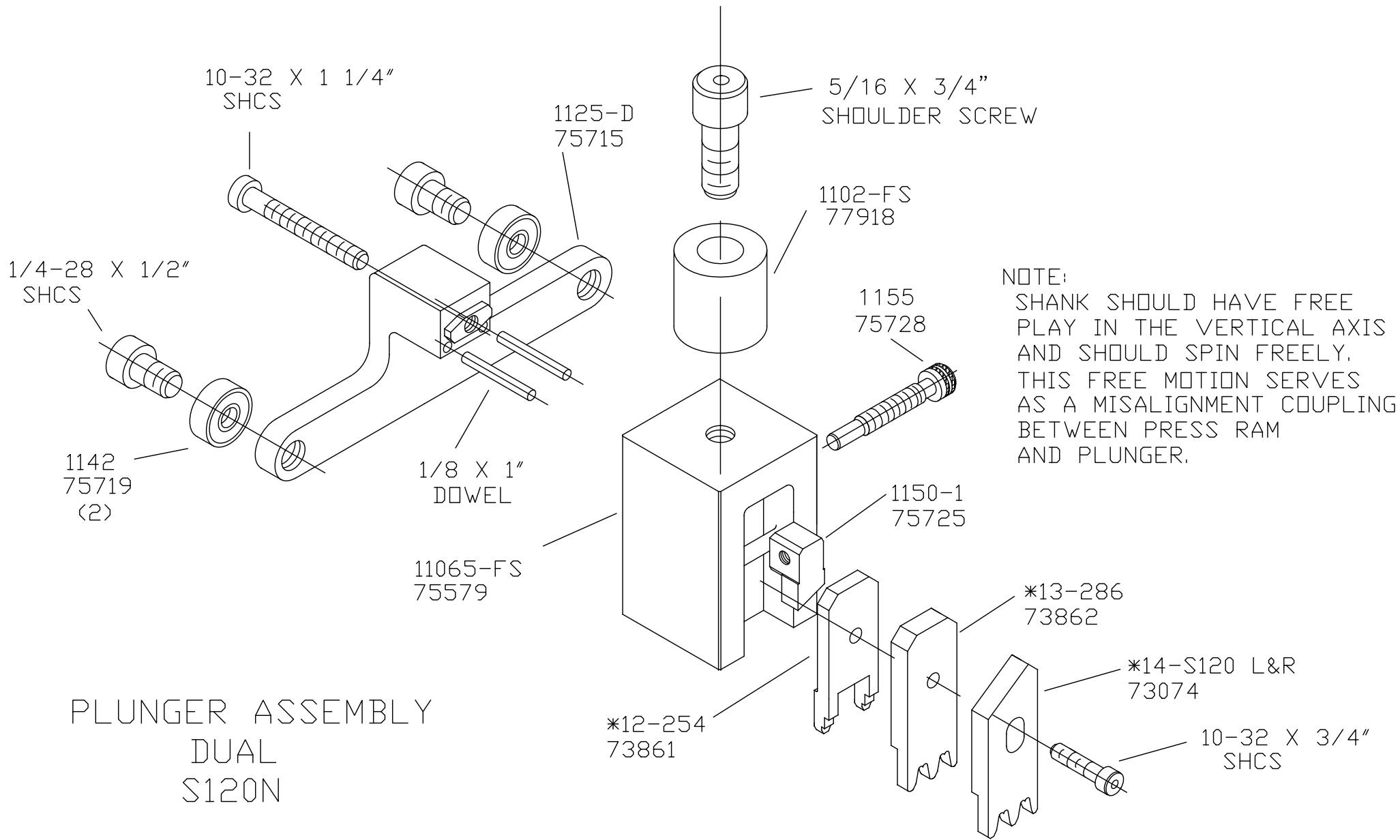


CASTING ASSEMBLY DUAL S120N



NEVER OPERATE APPLICATOR WITHOUT
SAFETY GUARD IN POSITION.





PLUNGER ASSEMBLY
DUAL
S120N