



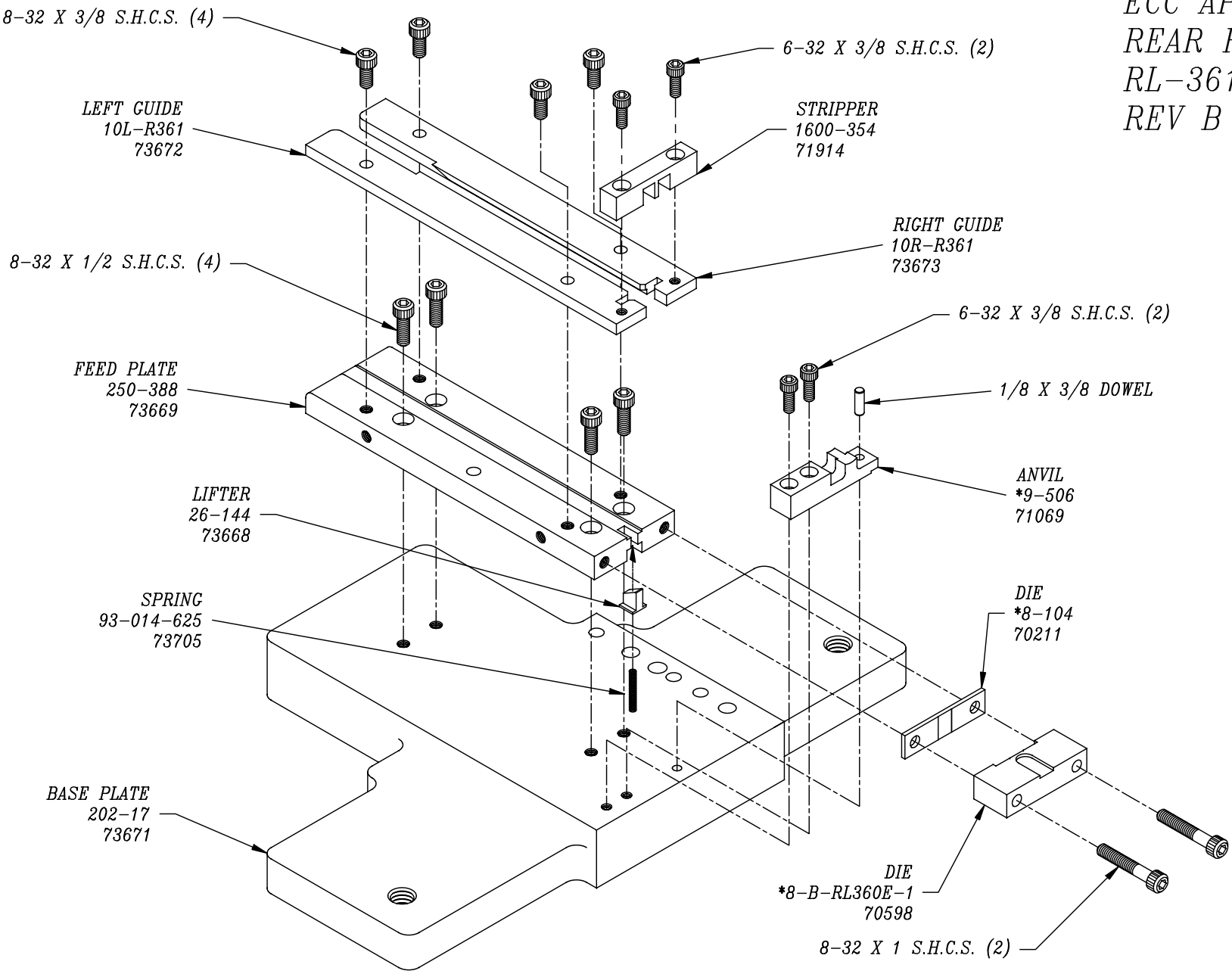
REFERENCE LIST:
RL361E
ECC APPLICATOR
BILL OF MATERIAL NUMBER
79898
REV B

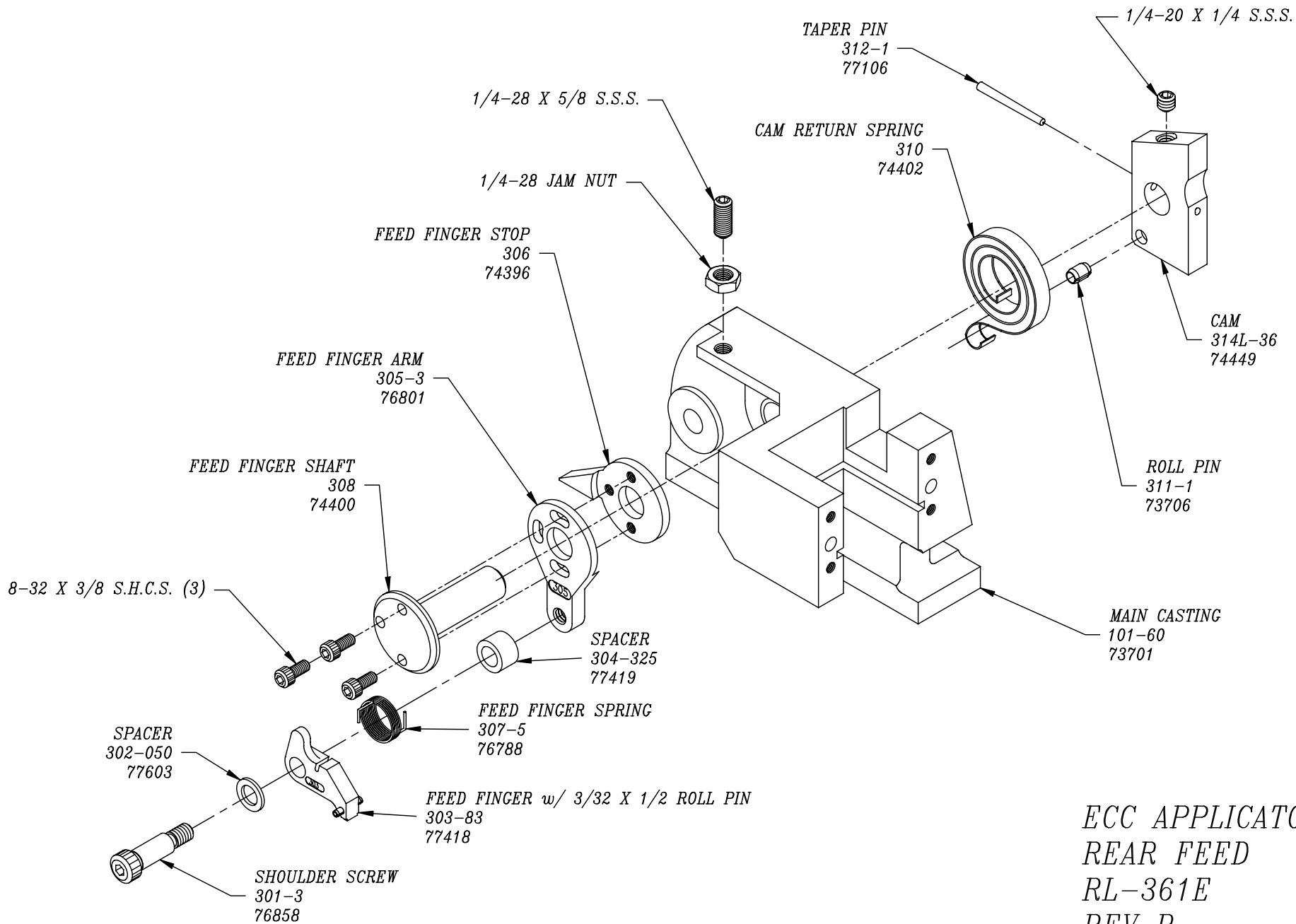
WARNING !
NEVER OPERATE
THIS OR ANY
APPLICATOR
WITHOUT SAFETY
GUARD IN POSITION.

PART CODE	PART NUMBER	QUANTITY	DESCRIPTION
71912	11-288-FS	(1)	PLUNGER
77918	1102-FS	(1)	FLOATING SHANK
75728	1155	(1)	ADJUST SCREW
75724	1150		INSULATION BLOCK
71945	*12-RL361E-1	(1)	CUT-OFF PUNCH
78720	*13-S320-2	(1)	WIRE ROLLING TOOL
73166	*14-D462L	(1)	INSULATION ROLLING TOOL
75713	11B1	(1)	CAM ROLLER BRACKET
75719	1142	(1)	CAM ROLLER BEARING
74449	314-36	(1)	CAM BODY
77106	312-1	(1)	CAM TAPER PIN
74402	310	(1)	CLOCK SPRING
73706	311-1	(1)	ROLL PIN
73702	169-7	(2)	GIB
71914	1600-354	(1)	STRIPPER
71915	101-120	(1)	TOP CASTING
76802	408-710	(1)	BRAKE BUSHING
74676	407	(1)	SPRING
74675	406	(1)	COTTER PIN
74674	405	(1)	TAPER PIN
74673	404	(1)	BRAKE CAM
74577	403-77	(1)	BRAKE BODY
74496	402	(1)	BRAKE SPRING RETAINER
74495	401	(1)	BRAKE SHAFT
74396	306	(1)	FEED FINGER STOP
76801	305-3	(1)	FEED FINGER ARM
77419	304-325	(1)	REAR SPACER
74400	308	(1)	FEED SHAFT
76788	307-5	(1)	SPRING
77418	303-83	(1)	FEED FINGER
77603	302-050	(1)	FRONT SPACER
76858	301-3	(1)	SHOULDER SCREW
73673	10R-R361	(1)	RIGHT GUIDE
73672	10L-R361	(1)	LEFT GUIDE
73669	250-388	(1)	DIE PLATE
71069	*9-506	(1)	ANVIL
73671	202-17	(1)	BASE PLATE

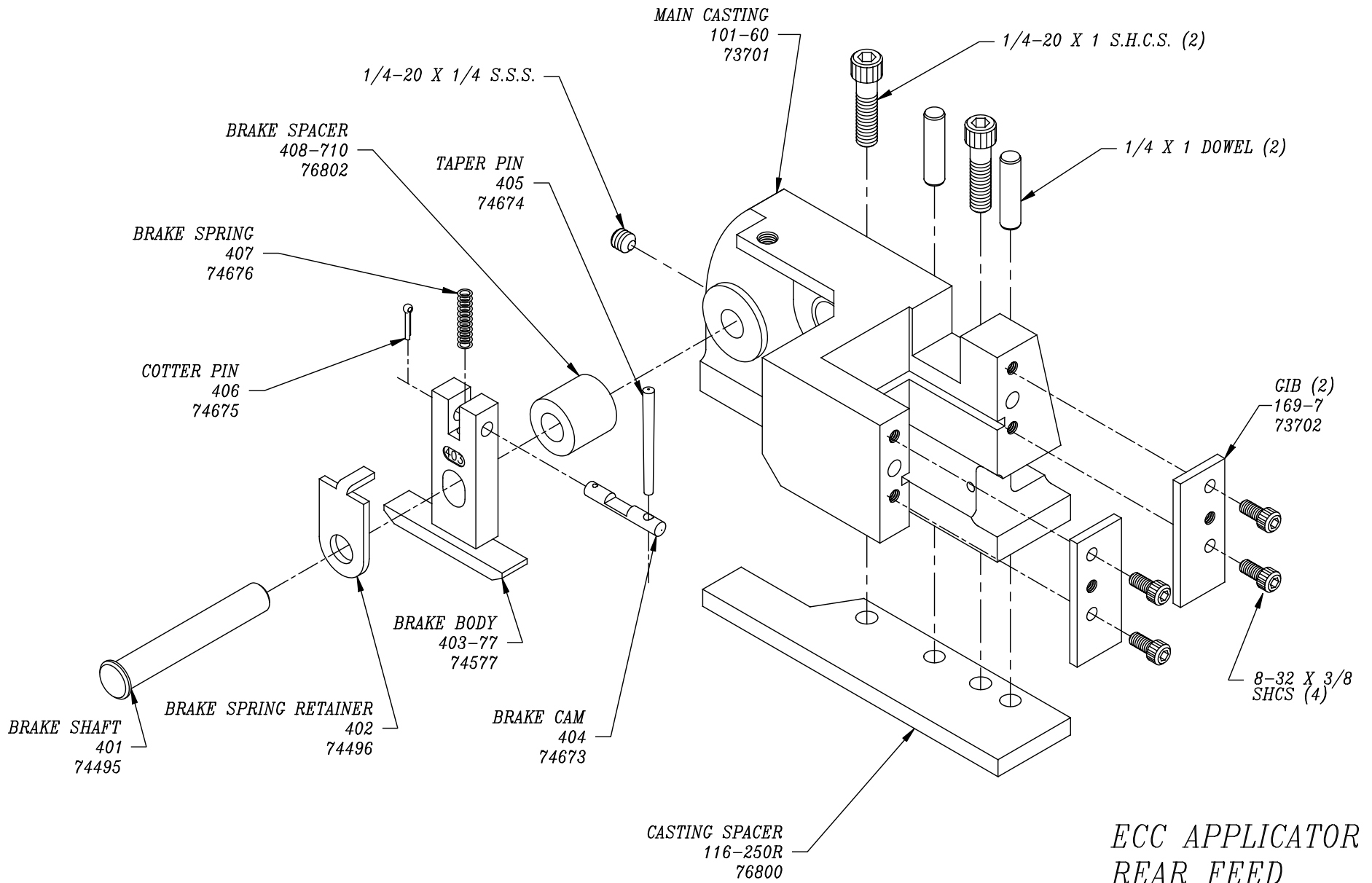
NOTE: ITEMS MARKED WITH AN *
ARE HIGH WEAR ITEMS

*ECC APPLICATOR
 REAR FEED
 RL-361E
 REV B*

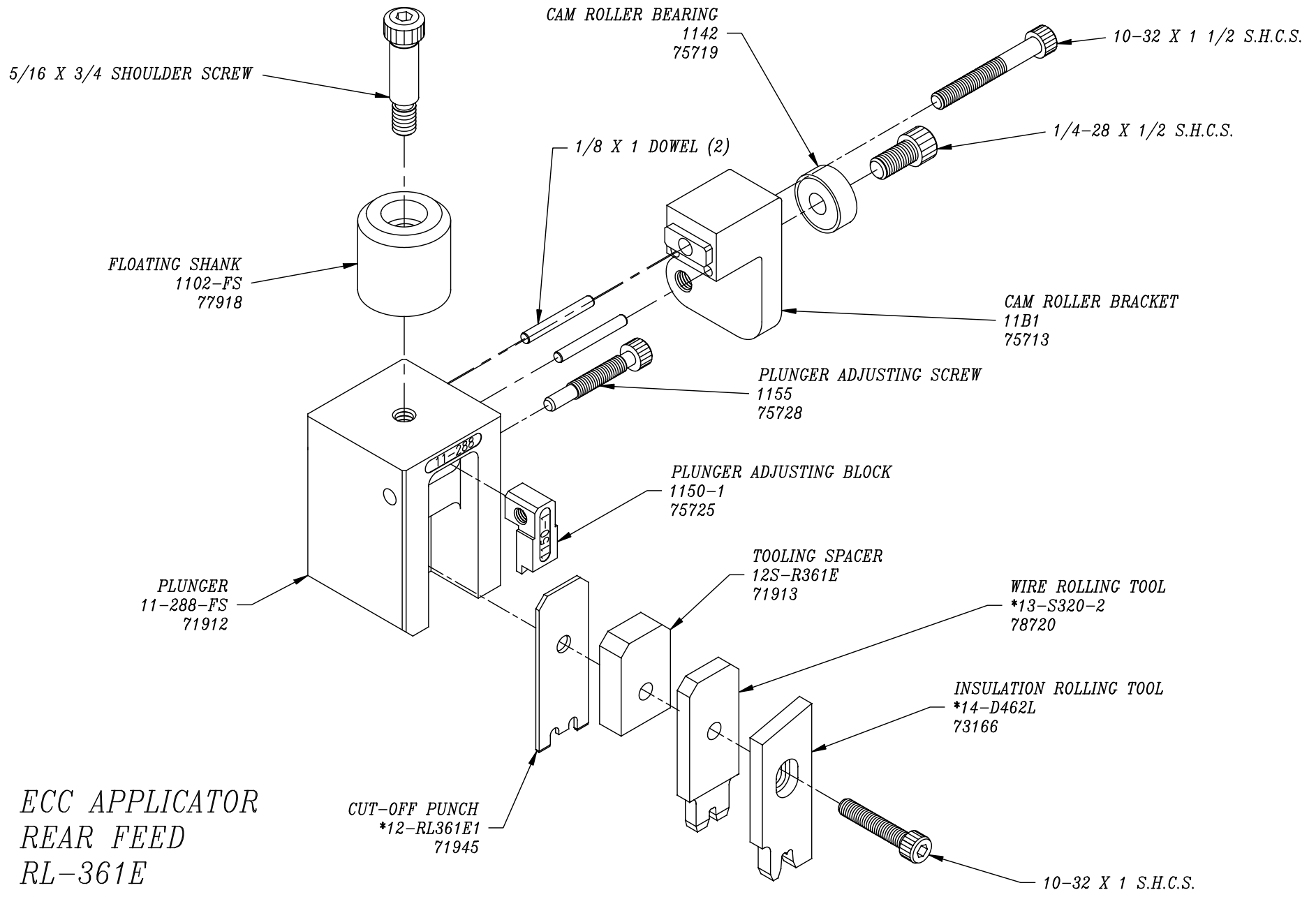




ECC APPLICATOR
 REAR FEED
 RL-361E
 REV B

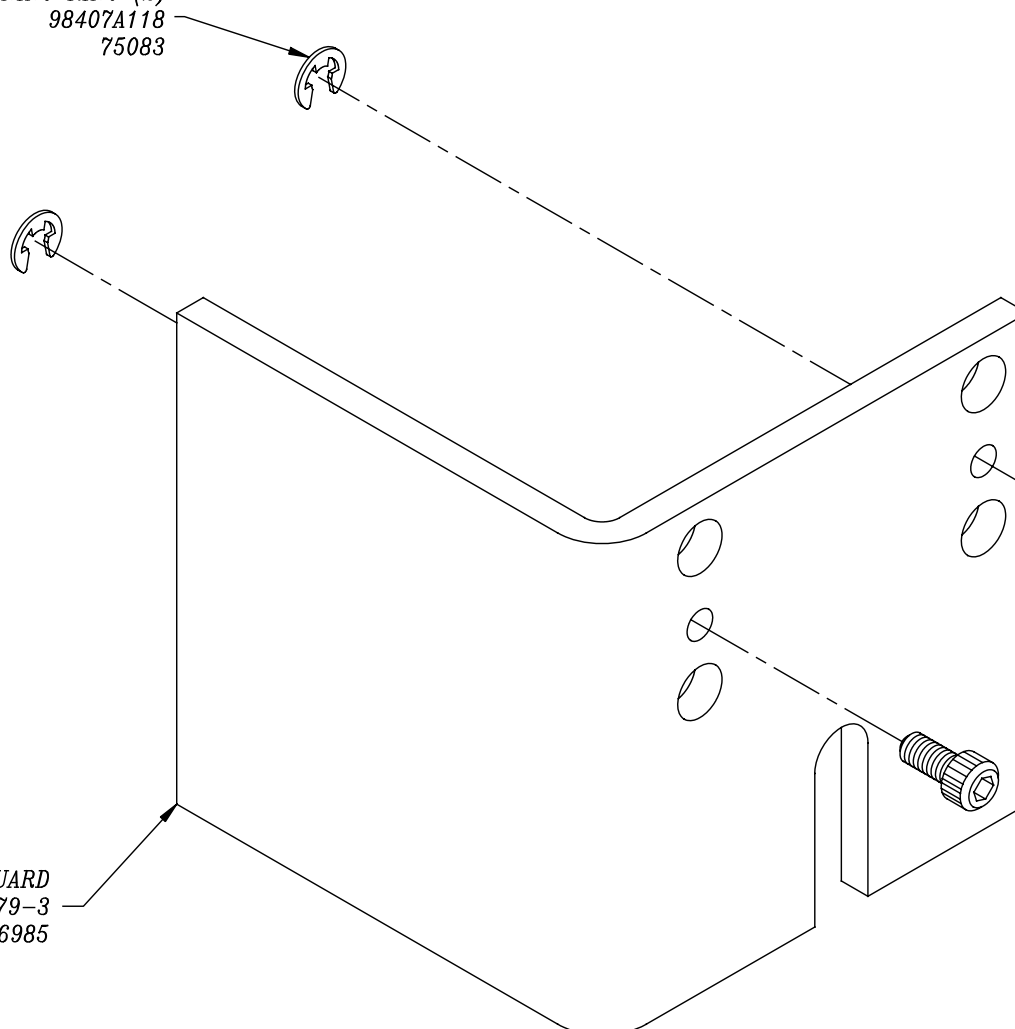


ECC APPLICATOR
 REAR FEED
 RL-361E
 REV B



ECC APPLICATOR
REAR FEED
RL-361E
REV B

E-STYLE RETAINING RING (2)
98407A118
75083



GUARD
179-3
76985

8-32 X 3/8 S.H.C.S. (2)

*ECC APPLICATOR
REAR FEED
RL-361E
REV B*