

ITEM NO.	Part_code	PART NUMBER	DESCRIPTION	QTY.	ITEM NO.	Part_code	PART NUMBER	DESCRIPTION	QTY.
1	78709	8-3096	Rear Cut-off Die	1	70	63213	8-32_1.00sh	#8-32 x 1" Socket Hd Cap Screw	2
2	78708	8A-3096	Front Cut-off Die	1	71	63158	3.16_.50dp	Ø3/16" x 1/2" Dowel Pin	4
3	78711	9-3096	Wire Anvil	1	72	63194	3.16_10-32_.50 shs	3/16" x 1/2" x 10-32 Shoulder Screw	1
4	78710	9A-3096	Insulation Anvil	1	73	63470	3.16_.75dp	Ø3/16" x 3/4" Dowel Pin	4
5	77352	12-3056	Cut-off Punch	1	74	63473	10-32_.25sh	#10-32 x 1/4" Socket Hd Cap Screw	1
6	78714	12A-3096	Cut-off Punch Spacer	1	75	63054	10-32_.25ss	#10-32 x 1/4" Socket Hd Set Screw	3
7	78713	13-3096	Wire Rolling Tool	1	76	78993	10-32_.38bh	#10-32 x 3/8" Button Hd Cap Screw	2
8	78712	14-3096	Insulation Rolling Tool	1	77	71626	10-32_.38ss	#10-32 x 3/8" Socket Hd Set Screw	4
9	78703	34-3096	Wire Crimp Dial	1	78	76501	10-32_.50bh	#10-32 x 1/2" Button Hd Cap Screw	8
10	77160	128S-3001	IRT Spacer	1	79	70293	10-32_.63sh	#10-32 x 5/8" Socket Hd Cap Screw	1
11	75285	199-3001	Guard	1	80	70925	10-32_.88sh	#10-32 x 7/8" Socket Hd Cap Screw	2
12	76532	200-3036	Baseplate	1	81	63155	10-32_1.00sh	#10-32 x 1" Socket Hd Cap Screw	2
13	78707	303-3096	Feed Finger	1	82	77396	10-32_1.25sh	#10-32 x 1 1/4" Socket Hd Cap Screw	2
14	78704	403-3096	Brake Shoe	1	83	63632	1.4-20_.50bh	1/4-20 x 1/2" Button Hd Cap Screw	3
15	78706	500-3096	Right Guide Rail	1	84		1.4_.75dp	1/4" x 3/4" Dowel Pin	2
16	78705	1000-3096	Left Guide Rail	1	85	63055	5.16-18_1.00bh	5/16-18 x 1" Button Hd Cap Screw	1
17	75287	1600-3011	Stripper	1					
18	74491	GS-375	Guard Spacer	2					
19	74343	MX3	Ram	1					
20	74346	MX6	Gear Arm	1					
21	74347	MX7	Cam Pin	1					
22	74350	MX8	Cam Roller	1					
23	74352	MX11	Gib	2					
24	74356	MX12	Feed Finger Pivot Pin	1					
25	74360	MX13	Adjusting Bar	1					
26	74364	MX16	Retainer	1					
27	74376	MX25	Stroke Adjustment Screw	1					
28	74407	MX33	Mounting Post	1					
29	74409	MX35	Insulation Dial	1					
30	74411	MX36	Dial Spacer	1					
31	74412	MX44	Locating Dowel	1					
32	74418	MX49	Tool Retainer	1					
33	74419	MX50	Safety Pivot Pin	3					
34	74420	MX52	Pivot Pin	2					
35	74908	MX54-R	Slide Support	1					
36	74816	MX55-R	Feed Plate	1					
37	74909	MX58-R	Frame	1					
38	74912	MX69-R	Upper Rack Pad	1					
39	74913	MX70-R	Lower Rack Pad	1					
40	74914	MX71-R	Cam Rack	1					
41	72285	MX72-R-1	Swing Arm	1					
42	72287	MX73-R-1	Feed Arm	1					
43	74915	MX75-R	Cam, 1 5/8" Downstroke	1					
44	72596	MX80-1-R	Feed Finger Spring	1					
45	74521	MX89-R	Cam, 1 1/8" Upstroke	1					
46	74820	MX91-R	Lifter Plate	1					
47	74821	MX92-R	Brake Support	2					
48	74822	MX93-R	Lifter	2					
49	74823	MX94-R	Brake Shaft	1					
50	74825	MX96-R	Brake Handle	1					
51	74827	MX97-R	Retaining Ring	2					
52	72286	MX99-R-1	Spacer	1					
53	74917	MX100-R	Spring Bracket	1					
54	76682	MX101-R	Cam, 1 5/8" Upstroke	1					
55	72204	MX102-R	Cam (K Press Down Stroke)	1					
56	72310	MX104	Wave Disc Spring	1					
57	75083	Irving 3100-18	External Retaining Ring	2					
58	75342	LC-045E-6-M	Brake Spring	2					
59	74611	LE-037CD-6	Extension Spring	1					
60	70739	McMaster-Carr #3126A53	Spring Plunger	2					
61	73785	SPI 99-602-5	#10 Black Knurled Knob	2					
62	62294	1.16_.75rp	1/16" x 3/4" Roll Pin	1					
63	62040	1.8_1.00rp	1/8" x 1" Roll Pin	1					
64	63207	6-32_.25sh	#6-32 x 1/4" Socket Hd Cap Screw	2					
65	63212	8-32_.25bh	#8-32 x 1/4" Button Hd Cap Screw	1					
66	61472	8-32_.38bh	#8-32 x 3/8" Button Hd Cap Screw	4					
67	63508	8-32_.38fh	#8-32 x 3/8" Flat Hd Cap Screw	2					
68	63161	8-32_.38sh	#8-32 x 3/8" Socket Hd Cap Screw	4					
69	63949	8-32_.88sh	#8-32 x 7/8" Socket Hd Cap Screw	4					

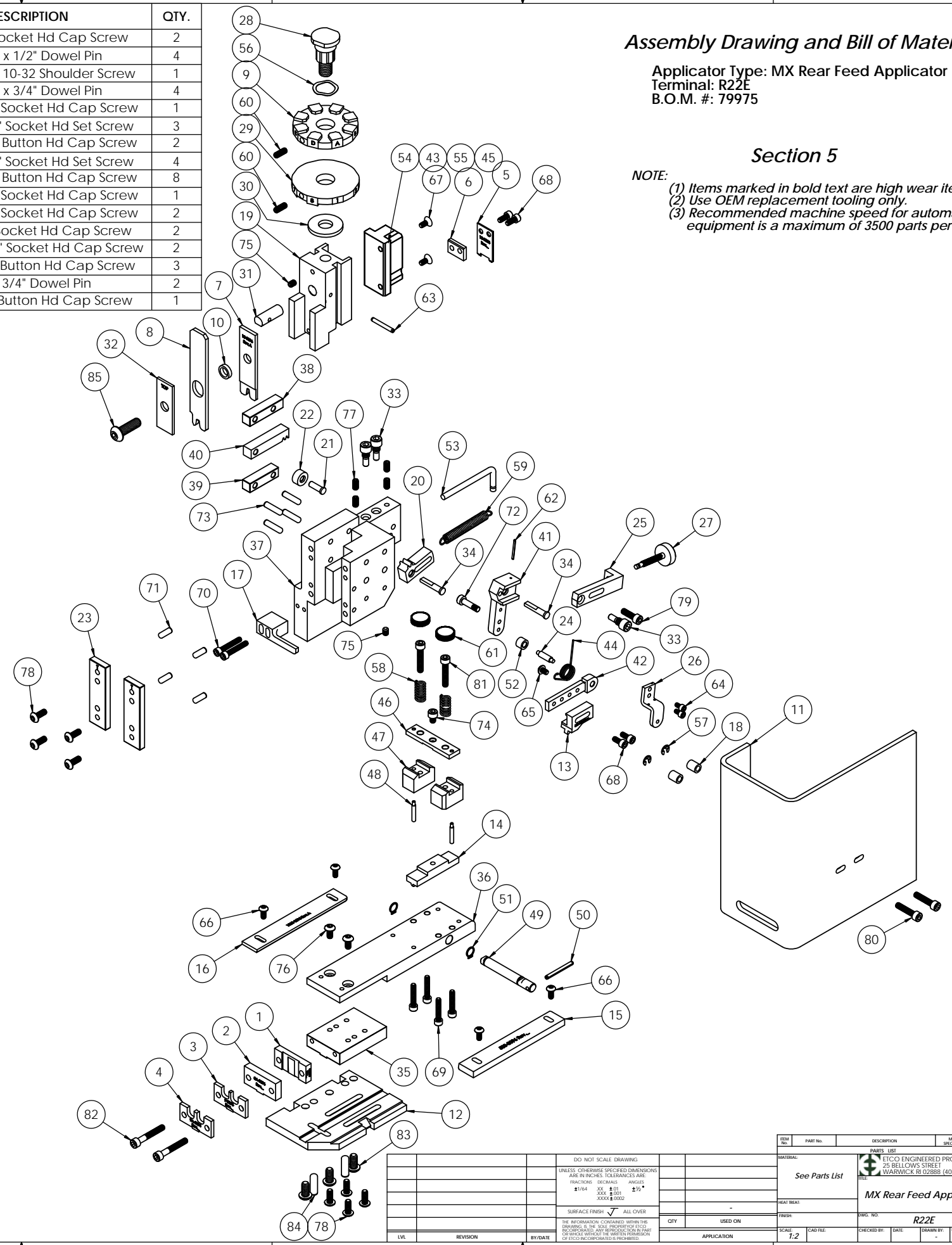
NOTE: ITEMS MARKED IN BOLD TEXT ARE HIGH WEAR ITEMS

Assembly Drawing and Bill of Materials

Applicator Type: MX Rear Feed Applicator
Terminal: R22E
B.O.M. #: 79975

Section 5

- NOTE:**
- (1) Items marked in bold text are high wear items.
 - (2) Use OEM replacement tooling only.
 - (3) Recommended machine speed for automatic equipment is a maximum of 3500 parts per hour.



ITEM NO.	PART NO.	DESCRIPTION	MATERIAL SPECIFICATION	QTY.	REVISION
1	78709	Rear Cut-off Die		1	
2	78708	Front Cut-off Die		1	
3	78711	Wire Anvil		1	
4	78710	Insulation Anvil		1	
5	77352	Cut-off Punch		1	
6	78714	Cut-off Punch Spacer		1	
7	78713	Wire Rolling Tool		1	
8	78712	Insulation Rolling Tool		1	
9	78703	Wire Crimp Dial		1	
10	77160	IRT Spacer		1	
11	75285	Guard		1	
12	76532	Baseplate		1	
13	78707	Feed Finger		1	
14	78704	Brake Shoe		1	
15	78706	Right Guide Rail		1	
16	78705	Left Guide Rail		1	
17	75287	Stripper		1	
18	74491	Guard Spacer		2	
19	74343	MX3		1	
20	74346	MX6		1	
21	74347	MX7		1	
22	74350	MX8		1	
23	74352	MX11		2	
24	74356	MX12		1	
25	74360	MX13		1	
26	74364	MX16		1	
27	74376	MX25		1	
28	74407	MX33		1	
29	74409	MX35		1	
30	74411	MX36		1	
31	74412	MX44		1	
32	74418	MX49		1	
33	74419	MX50		3	
34	74420	MX52		2	
35	74908	MX54-R		1	
36	74816	MX55-R		1	
37	74909	MX58-R		1	
38	74912	MX69-R		1	
39	74913	MX70-R		1	
40	74914	MX71-R		1	
41	72285	MX72-R-1		1	
42	72287	MX73-R-1		1	
43	74915	MX75-R		1	
44	72596	MX80-1-R		1	
45	74521	MX89-R		1	
46	74820	MX91-R		1	
47	74821	MX92-R		2	
48	74822	MX93-R		2	
49	74823	MX94-R		1	
50	74825	MX96-R		1	
51	74827	MX97-R		2	
52	72286	MX99-R-1		1	
53	74917	MX100-R		1	
54	76682	MX101-R		1	
55	72204	MX102-R		1	
56	72310	MX104		1	
57	75083	Irving 3100-18		2	
58	75342	LC-045E-6-M		2	
59	74611	LE-037CD-6		1	
60	70739	McMaster-Carr #3126A53		2	
61	73785	SPI 99-602-5		2	
62	62294	1.16_.75rp		1	
63	62040	1.8_1.00rp		1	
64	63207	6-32_.25sh		2	
65	63212	8-32_.25bh		1	
66	61472	8-32_.38bh		4	
67	63508	8-32_.38fh		2	
68	63161	8-32_.38sh		4	
69	63949	8-32_.88sh		4	