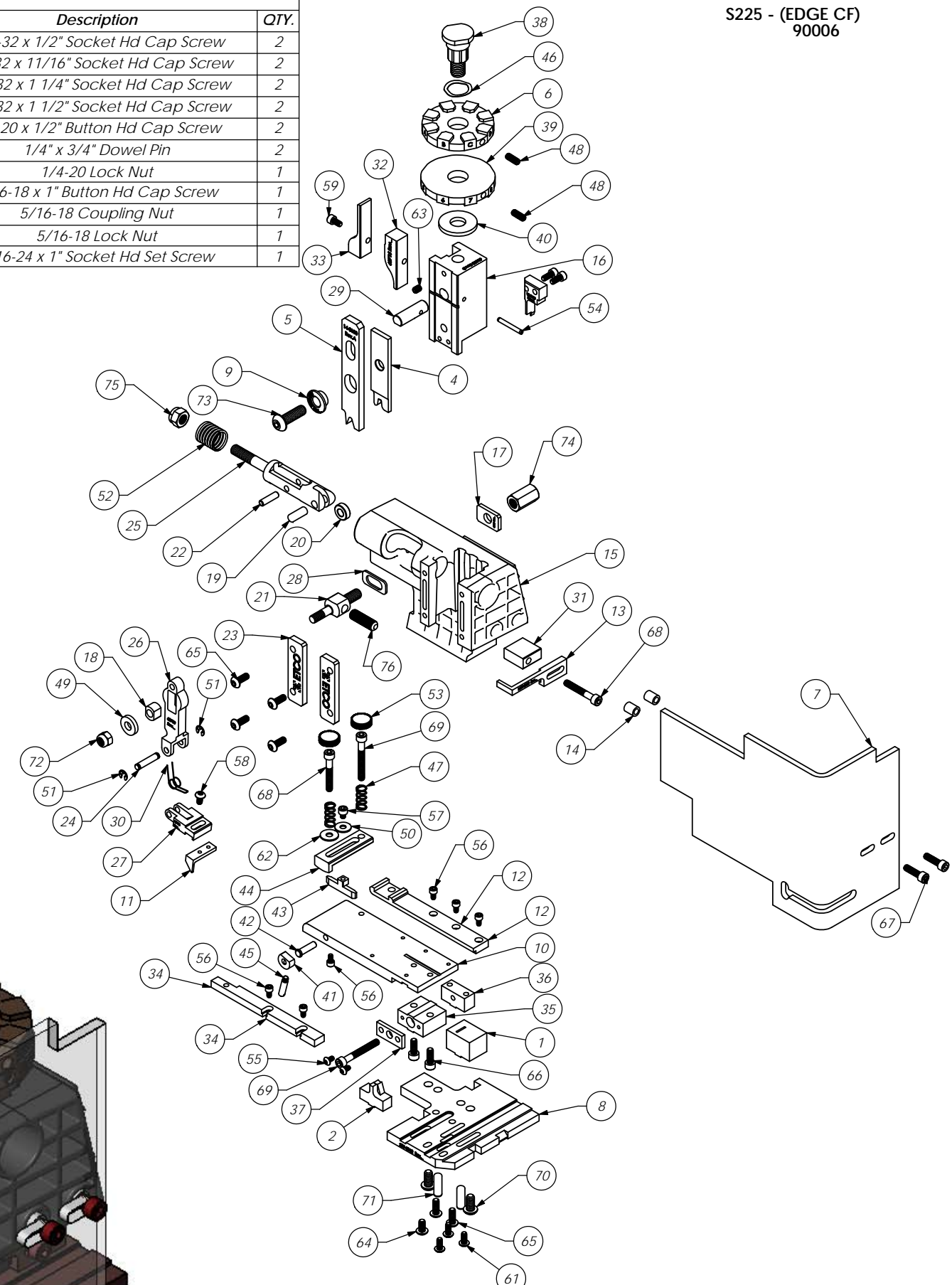


| Parts List | | | | |
|------------|-----------|--------------------------|--------------------------------------|------|
| Item No. | Part Code | Part No. | Description | QTY. |
| 1 | 70321 | 8-3100 | Cut-off Die | 1 |
| 2 | 70322 | 9-3100 | Anvil | 1 |
| 3 | 70323 | 12-3100 | Cut-off Punch | 1 |
| 4 | 70324 | 13-3100 | Wire Rolling Tool | 1 |
| 5 | 70442 | 14-3100 | Insulation Rolling Tool | 1 |
| 6 | 71017 | 34-3100 | Wire Crimp Dial | 1 |
| 7 | 76403 | 199-3005 | Safety Guard | 1 |
| 8 | 100021 | 200-8002 | Baseplate | 1 |
| 9 | 64256 | 222S-3002 | Insulation Tool Spacer | 1 |
| 10 | 70299 | 250-3100 | Feed Plate | 1 |
| 11 | 75942 | 303-3021 | Feed Finger | 1 |
| 12 | 70175 | 500-3100 | Rear Guide Rail | 1 |
| 13 | 63711 | 1600-8000 | Stripper | 1 |
| 14 | 74491 | GS-375 | Guard Spacer | 2 |
| 15 | 100001 | ED2-C-1 | ETCO Edge Composite Frame - Machined | 1 |
| 16 | 63658 | ED3 | Plunger | 1 |
| 17 | 63709 | ED4 | Retainer | 1 |
| 18 | 63731 | ED5 | Feed Adjustment Guide Block | 1 |
| 19 | 63733 | ED7 | Cam Roll Pin | 1 |
| 20 | 63706 | ED8 | Cam Roller | 1 |
| 21 | 63704 | ED9 | Feed Adjustment Block | 1 |
| 22 | 64245 | ED10 | Feed Arm Pin | 1 |
| 23 | 63717 | ED11 | Gib | 2 |
| 24 | 63701 | ED12 | Feed Finger Shaft | 1 |
| 25 | 63705 | ED13 | Adjustable Feed Piston | 1 |
| 26 | 63700 | ED14 | Feed Arm | 1 |
| 27 | 63702 | ED16 | Feed Finger Retainer | 1 |
| 28 | 64121 | ED19-C | Shim for Nylon Farme | 1 |
| 29 | 63659 | ED44 | Locating Dowel | 1 |
| 30 | 63732 | ED45 | Feed Finger Spring | 1 |
| 31 | 63712 | ED50-S | Stripper Spacer | 1 |
| 32 | 63715 | ED51 | Post-feed Cam | 1 |
| 33 | 63716 | ED52 | Pre-Feed Cam | 1 |
| 34 | 74840 | MX28-1-S | Front Guide Rail | 1 |
| 35 | 74384 | MX29-S | Slide Support | 1 |
| 36 | 74388 | MX30-S | Support Anchor | 1 |
| 37 | 74390 | MX32-S | Support Cover | 1 |
| 38 | 74407 | MX33 | Mounting Post | 1 |
| 39 | 74409 | MX35 | Insulation Dial | 1 |
| 40 | 74411 | MX36 | Dial Spacer | 1 |
| 41 | 74425 | MX84-S | Brake Cam | 1 |
| 42 | 74426 | MX85-S | Cam Pivot Pin | 1 |
| 43 | 74428 | MX86-S | Brake Shoe | 1 |
| 44 | 75178 | MX87-S | Lift Arm | 1 |
| 45 | 74430 | MX88-S | Lever | 1 |
| 46 | 72310 | MX104 | Wave Disc Spring | 1 |
| 47 | 77322 | LC-045E-10-M | Spring | 2 |
| 48 | 70739 | McMaster-Carr #3126A53 | Spring Plunger | 2 |
| 49 | 64213 | McMaster Carr #98370A28 | 1/4" Hardened Flatwasher | 1 |
| 50 | 72519 | McMaster Carr #98029A043 | #8 Hardened Washer | 1 |
| 51 | 72069 | McMaster Carr #98407A118 | #8 E-Style Retaining Ring | 2 |
| 52 | 63735 | MS24585-1453 | Piston Spring | 1 |
| 53 | 73785 | SPI 99-602-5 | #10 Black Knurled Knob | 2 |
| 54 | 62040 | 1.8_1.00rp | 1/8" x 1" Roll Pin | 1 |
| 55 | 63792 | 6-32_25bh | #6-32 x 1/4" Button Hd Cap Screw | 2 |
| 56 | 63207 | 6-32_25sh | #6-32 x 1/4" Socket Hd Cap Screw | 6 |
| 57 | 60265 | 8-32_19sh | #8-32 x 3/16" Socket Hd Cap Screw | 1 |
| 58 | 77097 | 8-32_31bh | #8-32 x 5/16" Button Hd Cap Screw | 1 |
| 59 | | 8-32_31sh | #8-32 x 5/16" Socket Hd Cap Screw | 1 |
| 60 | 63161 | 8-32_38sh | #8-32 x 3/8" Socket Hd Cap Screw | 2 |
| 61 | 61472 | 8-32_38bh | #8-32 x 3/8" Button Hd Cap Screw | 3 |
| 62 | 63753 | 10fw | #10 Flatwasher | 1 |
| 63 | 63054 | 10-32_25ss | #10-32 x 1/4" Socket Hd Set Screw | 1 |
| 64 | 78993 | 10-32_38bh | #10-32 x 3/8" Button Hd Cap Screw | 1 |
| 65 | 76501 | 10-32_50bh | #10-32 x 1/2" Button Hd Cap Screw | 6 |

| Parts List | | | | |
|------------|-----------|-----------------|-------------------------------------|------|
| Item No. | Part Code | Part No. | Description | QTY. |
| 66 | 63056 | 10-32_50sh | #10-32 x 1/2" Socket Hd Cap Screw | 2 |
| 67 | 64215 | 10-32_69sh | #10-32 x 11/16" Socket Hd Cap Screw | 2 |
| 68 | 77396 | 10-32_1.25sh | #10-32 x 1 1/4" Socket Hd Cap Screw | 2 |
| 69 | 63826 | 10-32_1.50sh | #10-32 x 1 1/2" Socket Hd Cap Screw | 2 |
| 70 | 63632 | 1.4-20_50bh | 1/4-20 x 1/2" Button Hd Cap Screw | 2 |
| 71 | 64215 | 1.4_75dp | 1/4" x 3/4" Dowel Pin | 2 |
| 72 | 63707 | 1.4_20 LN | 1/4-20 Lock Nut | 1 |
| 73 | 63055 | 5.16-18_1.00bh | 5/16-18 x 1" Button Hd Cap Screw | 1 |
| 74 | | 5.16-18cn | 5/16-18 Coupling Nut | 1 |
| 75 | 63708 | 5.16-18 LN | 5/16-18 Lock Nut | 1 |
| 76 | 64216 | 5.16-24_1.00ssf | 5/16-24 x 1" Socket Hd Set Screw | 1 |

S225 - (EDGE CF)
90006



| | | | |
|---|----------|--|-------------|
| DO NOT SCALE DRAWING | | UNLESS OTHERWISE SPECIFIED DIMENSIONS ARE IN INCHES (DIMENSIONS IN MILLIMETERS ARE IN PARENTHESES) | |
| FRACTIONS | DECIMALS | ANGLES | UNITS |
| 1/16" | .001" | 30° | INCHES |
| 1/32" | .0005" | 15° | MILLIMETERS |
| 1/64" | .00025" | | |
| SURFACE FINISH: ALL OVER | | | |
| MATERIAL: See Parts List | | | |
| PARTS LIST | | | |
| ETCO ENGINEERED PRODUCTS 25 BELLOWS STREET WARWICK, RI 02888 (401) 467-2400 | | | |
| S225 - ETCO Edge Composite Frame | | | |
| SCALE: 1:1 | | DATE: 12/08/14 | |
| REVISION | | BY/DATE | |
| LVL | | APPLICATION | |