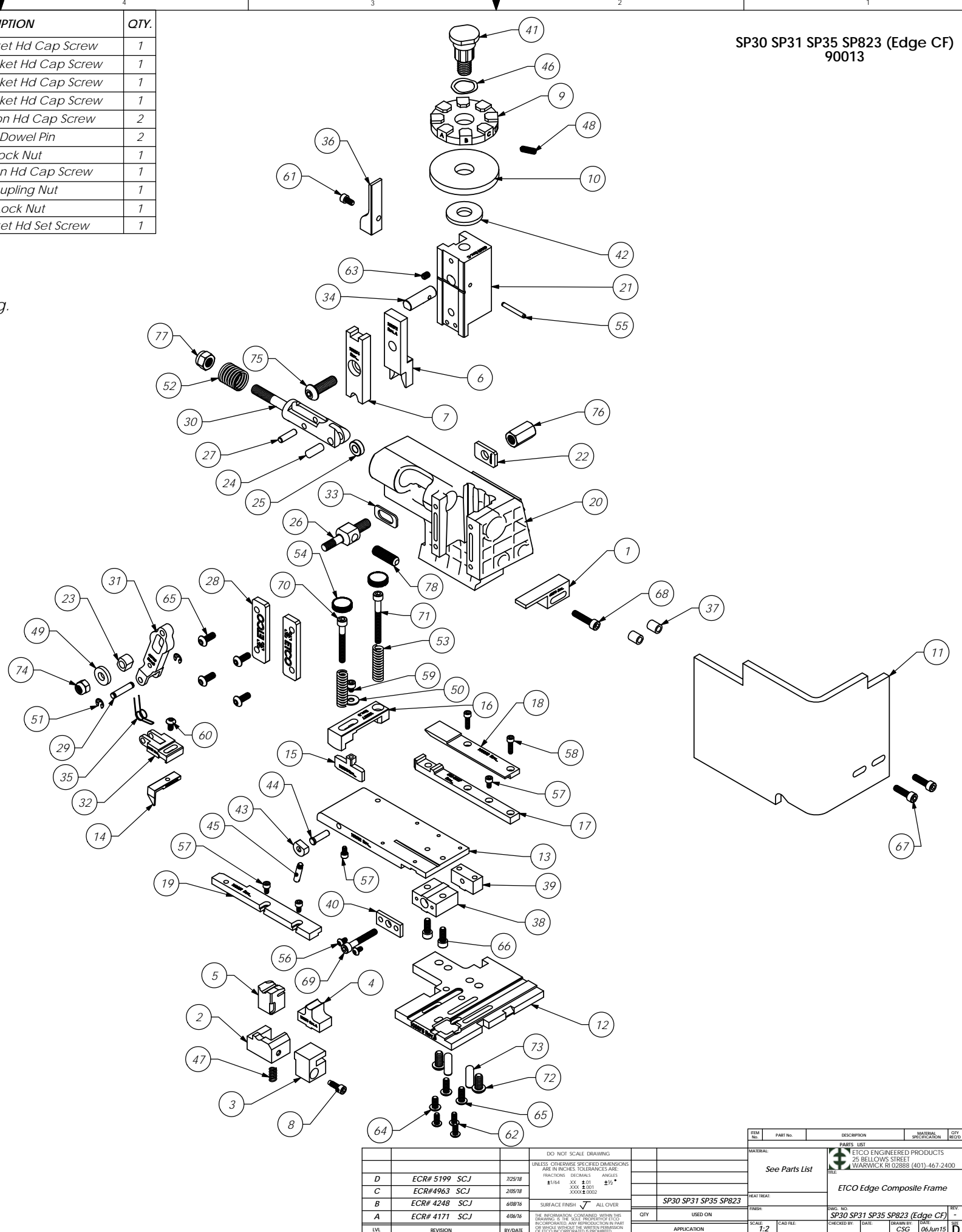


SP30 SP31 SP35 SP823 (Edge CF)
90013

ITEM NO.	PART NUMBER	Part_code	DESCRIPTION	QTY.	ITEM NO.	PART NUMBER	Part_code	DESCRIPTION	QTY.
1	63576	63576	Stripper	1	68	10-32_88sh	70925	#10-32 x 7/8" Socket Hd Cap Screw	1
2	62977	62977	Front Cut-off Pad Retainer	1	69	10-32_1.25sh	77396	#10-32 x 1 1/4" Socket Hd Cap Screw	1
3	62979	62979	Scrap Deflector	1	70	10-32_1.50sh	63826	#10-32 x 1 1/2" Socket Hd Cap Screw	1
4	9-8007	100073	Conductor Anvil - SP11, SP15	1	71	10-32_1.75sh	63166	#10-32 x 1 3/4" Socket Hd Cap Screw	1
5	12-8007	100100	Cut-Off Pad	1	72	1.4-20_50bh	63632	1/4-20 x 1/2" Button Hd Cap Screw	2
6	13-8007	100072	Rolling Tool - SP11, SP15, 52264	1	73	1.4_75dp	64215	1/4" x 3/4" Dowel Pin	2
7	15-8007	100074	Cut-off Pad Driver	1	74	1.4_20 LN	63707	1/4-20 Lock Nut	1
8	26C-3087	78292	Locking Screw	1	75	5.16-18_1.00bh	63055	5/16-18 x 1" Button Hd Cap Screw	1
9	34-8007	100101	Wire Crimp Dial	1	76	5.16-18cn	100063	5/16-18 Coupling Nut	1
10	35-8000	100554	No Insulation Dial	1	77	5.16-18 LN	63708	5/16-18 Lock Nut	1
11	199-6045	63583	Safety Guard	1	78	5.16-24_1.00ssf	64216	5/16-24 x 1" Socket Hd Set Screw	1
12	200-8007	100075	Baseplate	1					
13	250-8007	100082	Feed Plate	1					
14	303-8007	100076	Feed Finger	1					
15	403-8007	100078	Brake Shoe	1					
16	403A-8007	100077	Brake Lift Arm	1					
17	500-8007	100079	Rear Guide Rail	1					
18	500A-8007	100080	Rear Guide Top Plate	1					
19	1000-8007	100081	Front Guide Rail	1					
20	ED2-C-1	100001	ETCO Edge Composite Frame - Machined	1					
21	ED3	63658	Plunger	1					
22	ED4	63709	Retainer	1					
23	ED5	63731	Feed Adjustment Guide Block	1					
24	ED7	63733	Cam Roll Pin	1					
25	ED8	63706	Cam Roller	1					
26	ED9	63704	Feed Adjustment Block	1					
27	ED10	64245	Feed Arm Pin	1					
28	ED11	63717	Gib	2					
29	ED12	63701	Feed Finger Shaft	1					
30	ED13	63705	Adjustable Feed Piston	1					
31	ED14	63700	Feed Arm	1					
32	ED16	63702	Feed Finger Retainer	1					
33	ED19-C	64121	Shim for Nylon Frame	1					
34	ED44	63659	Locating Dowel	1					
35	ED45	63732	Feed Finger Spring	1					
36	ED52	63716	Pre-Feed Cam	1					
37	GS-375	74491	Guard Spacer	2					
38	MX29-S	74384	Slide Support	1					
39	MX30-S	74388	Support Anchor	1					
40	MX32-S	74390	Support Cover	1					
41	MX33	74407	Mounting Post	1					
42	MX36	74411	Dial Spacer	1					
43	MX84-S	74425	Brake Cam	1					
44	MX85-S	74426	Cam Pivot Pin	1					
45	MX88-S	74430	Lever	1					
46	MX104	72310	Wave Disc Spring	1					
47	4-034-875	74578	Spring	1					
48	McMaster-Carr #3126A53	70739	Spring Plunger	1					
49	McMaster Carr #98370A28	64213	1/4" Hardened Flatwasher	1					
50	McMaster Carr #98029A043	72519	#8 Hardened Washer	1					
51	McMaster Carr #98407A118	72069	#8 E-Style Retaining Ring	2					
52	MS24585-1453	63735	Piston Spring	1					
53	Producto #MP-02	62481	3/8" x 1" Blue Die Spring	2					
54	SPI 99-602-5	73785	#10 Black Knurled Knob	2					
55	1.8_1.00rp	62040	1/8" x 1" Roll Pin	1					
56	6-32_25bh	63792	#6-32 x 1/4" Button Hd Cap Screw	2					
57	6-32_25sh	63207	#6-32 x 1/4" Socket Hd Cap Screw	4					
58	6-32_50sh	63544	#6-32 x 1/2" Socket Hd Cap Screw	2					
59	8-32_19sh	60265	#8-32 x 3/16" Socket Hd Cap Screw	1					
60	8-32_31bh	77097	#8-32 x 5/16" Button Hd Cap Screw	1					
61	8-32_31sh	100091	#8-32 x 5/16" Socket Hd Cap Screw	1					
62	8-32_38bh	61472	#8-32 x 3/8" Button Hd Cap Screw	3					
63	10-32_25ss	63054	#10-32 x 1/4" Socket Hd Set Screw	1					
64	10-32_38bh	78993	#10-32 x 3/8" Button Hd Cap Screw	1					
65	10-32_50bh	76501	#10-32 x 1/2" Button Hd Cap Screw	6					
66	10-32_50sh	63056	#10-32 x 1/2" Socket Hd Cap Screw	2					
67	10-32_69sh	64215	#10-32 x 11/16" Socket Hd Cap Screw	2					

Note:
1) Items marked in "**Bold Italic**" = High wear tooling.
2) Use OEM replacement tooling only.



REV	DATE	BY/DAE	DESCRIPTION	SCALE	APP	QTY	USED ON	DATE	REV
D			ECR# 5199 SCJ	1:2				7/25/18	
C			ECR#4963 SCJ					2/28/18	
B			ECR# 4248 SCJ					4/28/18	
A			ECR# 4171 SCJ					4/26/18	

DO NOT SCALE DRAWING
UNLESS OTHERWISE SPECIFIED DIMENSIONS ARE IN INCHES. TOLERANCES ARE:
FRACTIONS DECIMALS ANGLES
1/16" ±.015 .0015 ±.001 2 1/2° ±.05°

SURFACE FINISH: ALL OVER

THE INFORMATION CONTAINED HEREIN IS THE PROPERTY OF ETCO ENGINEERED PRODUCTS. IT IS TO BE USED ONLY FOR THE PURPOSES SPECIFIED HEREIN. ANY REPRODUCTION OR TRANSMISSION OF THIS INFORMATION WITHOUT THE WRITTEN PERMISSION OF ETCO ENGINEERED PRODUCTS IS PROHIBITED.

ETCO ENGINEERED PRODUCTS
25 BELLOWS STREET
WARWICK, RI 02888 (401)-467-2400

ETCO Edge Composite Frame

SP30 SP31 SP35 SP823

SCALE: 1:2

DATE: 06/Jun/15

REV: D