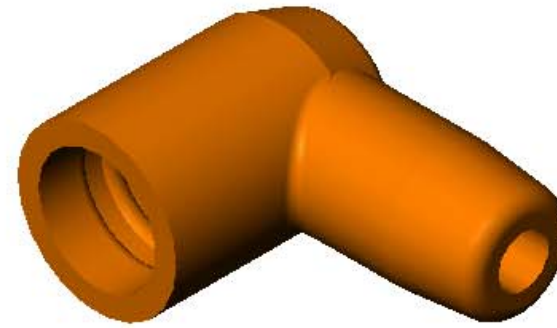


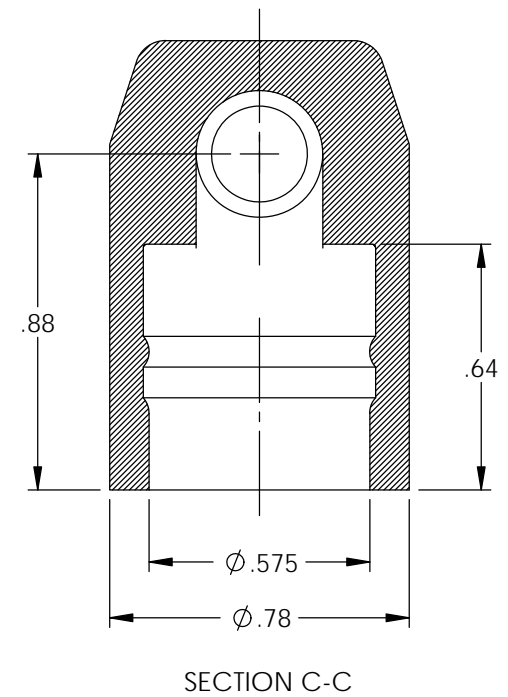
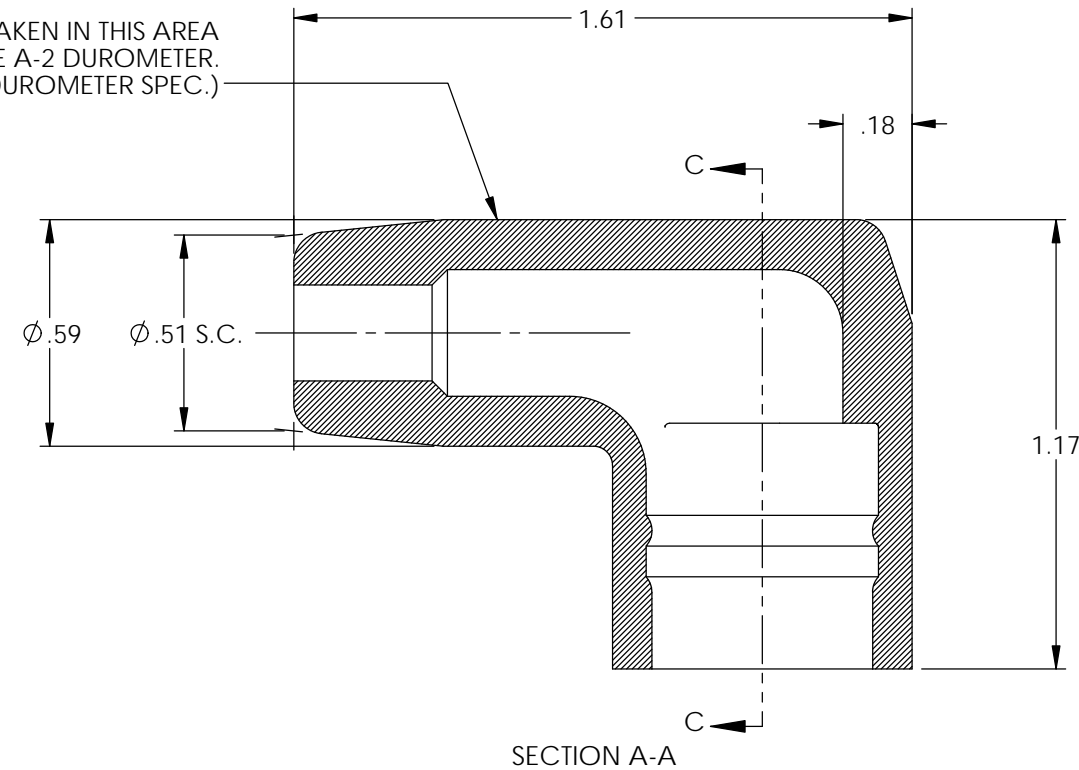
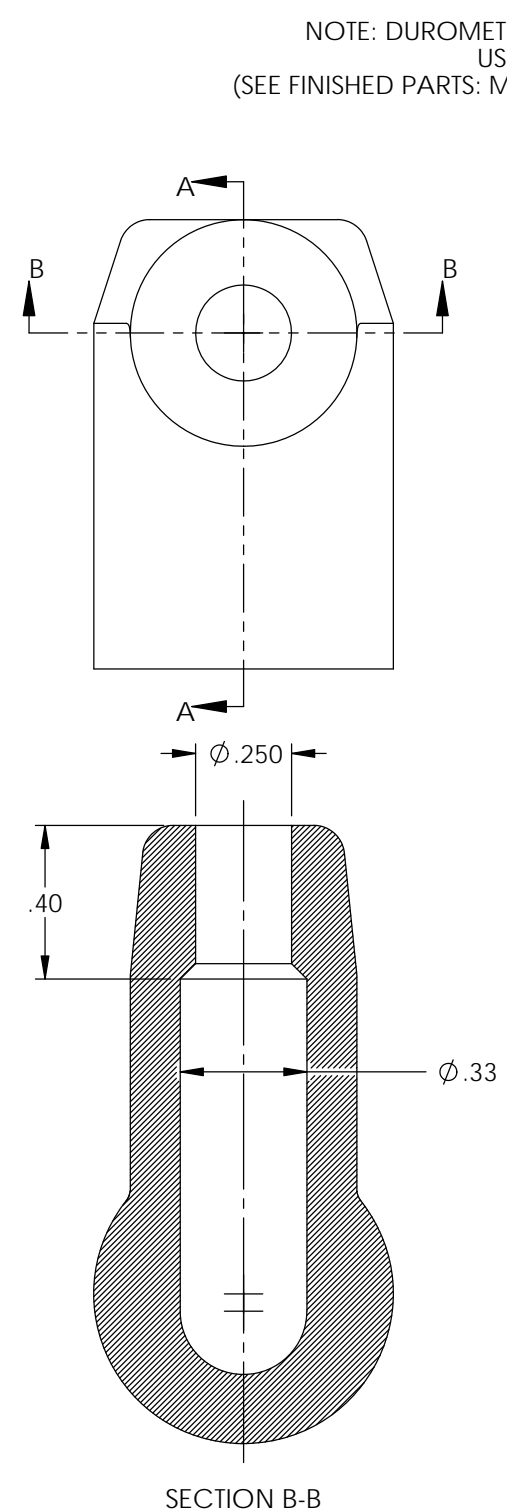
P/C	DESCRIPTION	COLOR	MATERIAL	TEMPERATURE
16083	AB16-BS	BLACK	SILICONE	400°
16139	AB16-GS	GREY	SILICONE	400°
16151	AB16-GS-600	GREY	SILICONE	600°
16136	AB16-GS/HT	GREY	SILICONE	500°
16085	AB16-OS	ORANGE	SILICONE	400°
16171	AB16-RS	RED	SILICONE	400°
16103	AB16-VS/LB-3752	LIGHT BLUE	SILICONE	400°
16126	AB16-VS/RB-2752	ROYAL BLUE	SILICONE	400°

NOTE:  
FOR MAXIMUM PERFORMANCE AND RELIABILITY,  
ALWAYS USE ETCO ENGINEERED IGNITION TERMINALS  
WITH ETCO AUTOMOTIVE INSULATORS.

Rev.	Description of Change/ SCN#	Date
1	Redrawn in SW from ACAD Org.Eng.Dwg.Date: 2/21/91	6/21/19



NOTE: DUROMETER TO BE TAKEN IN THIS AREA  
USING SHORE A-2 DUROMETER.  
(SEE FINISHED PARTS: MATERIAL/DUROMETER SPEC.)



# UNCONTROLLED COPY

<p>THIRD ANGLE PROJECTION TOLERANCES UNLESS OTHERWISE SPECIFIED INCHES: .XX - ±.030 .XXX - ±.015 ANGLES: ±2°</p>	<p>MOLD NO.</p> <p><b>2193</b></p>	<p>Title:</p> <p><b>Angle Boot</b></p>		
		<p>DO NOT SCALE DWG.</p>	<p>Drawn By: <b>S.Johnson</b></p>	<p>Date: <b>6/21/19</b></p>
<p>ETCO Incorporated Engineered Products 25 Bellows Street Warwick, RI 02888 Phone: (401) 467-2400 Fax: (401) 467-9230 www.ETCO.com</p>		<p>Design Control By:</p> <p><b>ETCO</b></p>	<p>Scale:</p> <p><b>2X</b></p>	<p>Size</p> <p><b>B</b></p>
		<p>Dwg. No.:</p> <p><b>AB16 cust</b></p>		