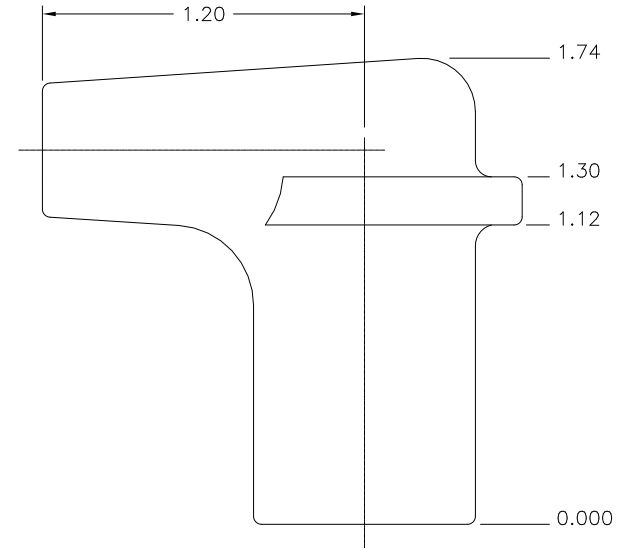
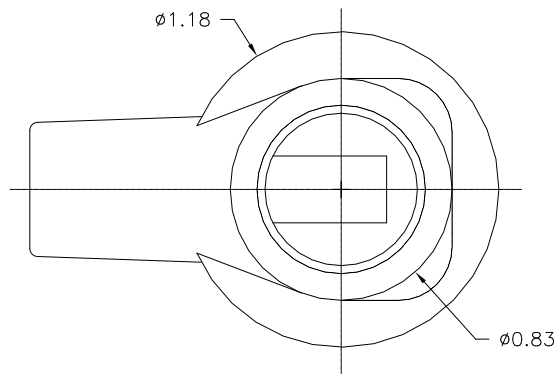
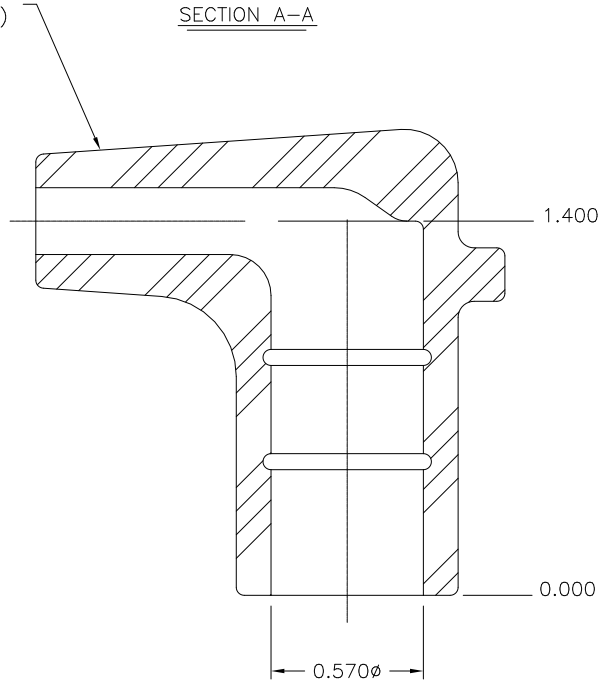
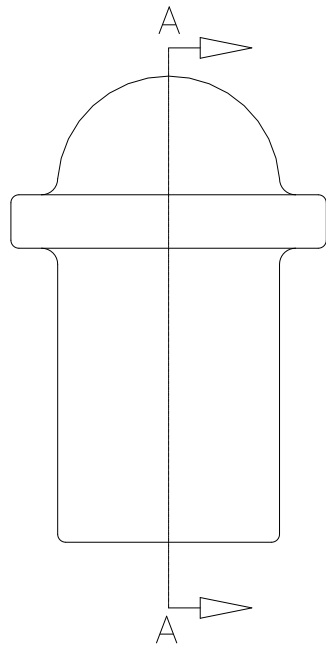
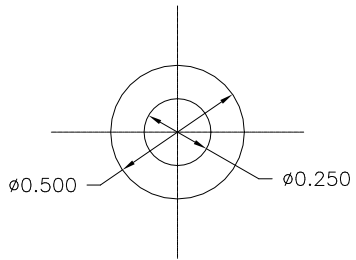


CUSTOMER PRINT

DUROMETER TO BE TAKEN IN THIS AREA USING SHORE A DUROMETER (SEE FINISHED PARTS - DUROMETER SPEC.)

SECTION A-A



FOR MAXIMUM PERFORMANCE AND RELIABILITY, ALWAYS USE ETCO ENGINEERED IGNITION TERMINALS WITH ETCO AUTOMOTIVE INSULATORS.

REV.	DESCRIPTION	DATE	TOLERANCES UNLESS SPECIFIED	
			FRACTIONS \pm	ANGLES $\pm 2^\circ$
	REVISED & RELEASED	1/25/94	$.000 \pm .015$	
			$.00 \pm .030$	
DO NOT SCALE DRAWING				
ETCO INCORPORATED AUTOMOTIVE DIVISION 3004 62ND AVENUE EAST BRADENTON, FLORIDA 34203 (941) 756-8426				
ANGLE BOOT				
MATERIAL			SEE ABOVE	DATE
				5-4-93
DRAWN BY	CHECKED BY	SCALE	PART NO.	
JTN		2=1	AB26	