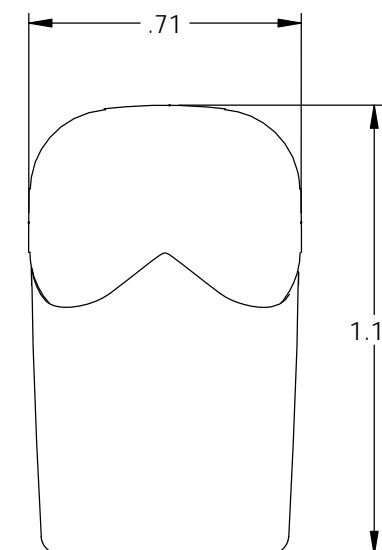
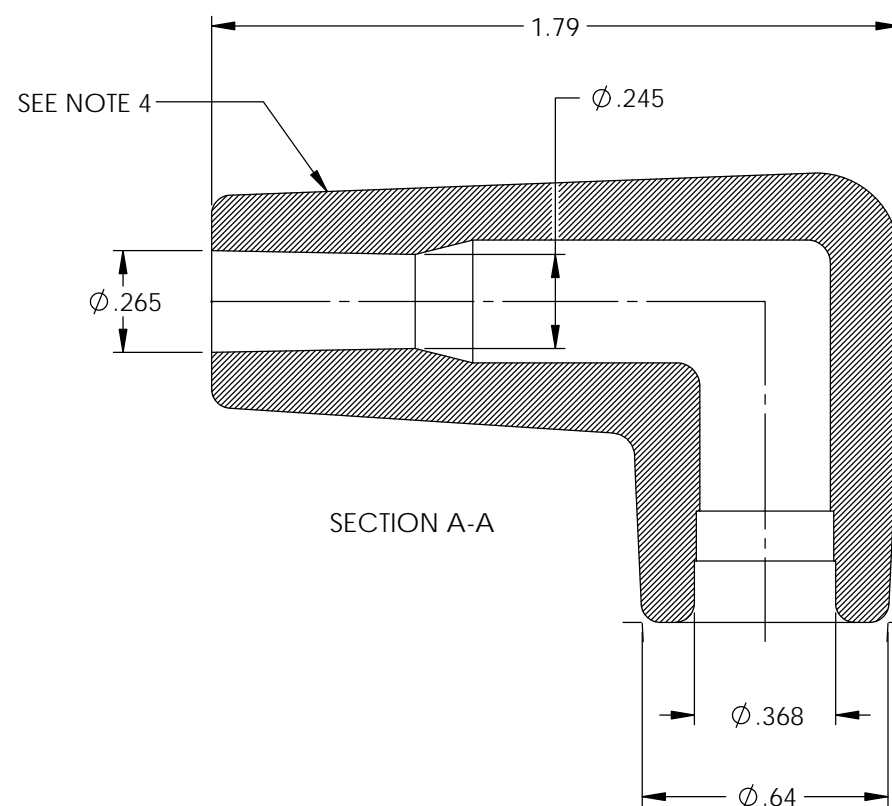
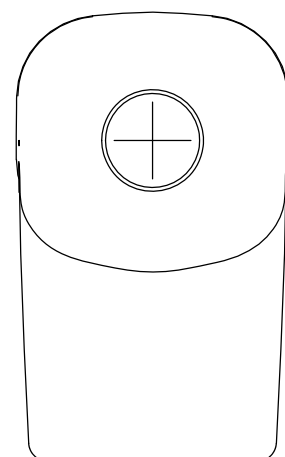
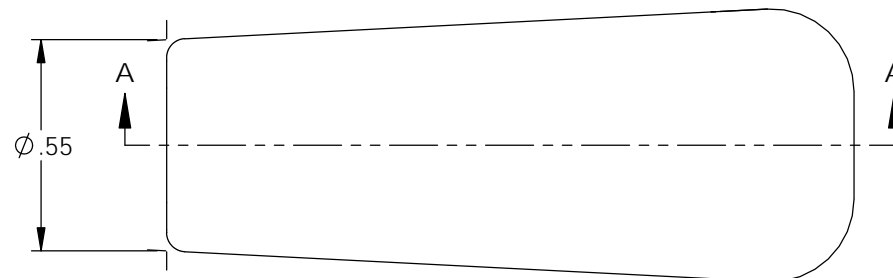
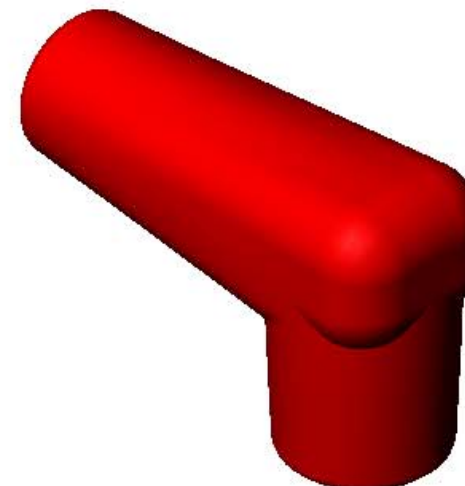


NOTES:

1. MATERIAL: SILICONE (TEMPERATURE: 400°).
2. MATERIAL: SILICONE (TEMPERATURE: 500°).
3. MATERIAL: SILICONE (TEMPERATURE: 600°).
4. DUROMETER TO BE TAKEN IN THIS AREA USING A-2 DUROMETER. SEE FINISHED PARTS: MAT'L/DUROMETER SPEC.
5. FOR MAXIMUM PERFORMANCE AND RELIABILITY, ALWAYS USE ETCO ENGINEERED IGNITOR TERMINALS WITH ETCO AUTOMOTIVE INSULATORS.

P/C	DESCRIPTION	MAT'L	COLOR
16027	AB9-BS	NOTE 1	BLACK
16028	AB9-OS	NOTE 1	ORANGE
16108	AB9-VS/RB-2752	NOTE 1	ROYAL BLUE
16122	AB9-RS	NOTE 1	RED
16135	AB9-VS/LB-3752	NOTE 1	LIGHT BLUE
16138	AB9-GS/HT	NOTE 2	GRAY
18096	AB9-GS/600	NOTE 3	GRAY

Rev.	Description of Change/ SCN#	Date
1	Redrawn in SW from ACAD Org.Eng.Dwg.Date: 12/13/89	2/12/19



UNCONTROLLED COPY

<p>THIRD ANGLE PROJECTION TOLERANCES UNLESS OTHERWISE SPECIFIED INCHES: .XX - ±.030 .XXX - ±.015 ANGLES: ±5°</p>	<p>MOLD NO. 2085 2217</p>	<p>Title: Distributor Nipple - 7mm</p>	
		<p>DO NOT SCALE DWG.</p>	<p>Drawn By: S.Johnson Date: 2/12/19</p>
<p>ETCO Incorporated Engineered Products 25 Bellows Street Warwick, RI 02888 Phone: (401) 467-2400 Fax: (401) 467-9230 www.ETCO.com</p>		<p>Design Control By: ETCO Scale: 2X Size: B</p>	<p>Dwg. No.: AB9 cust</p>