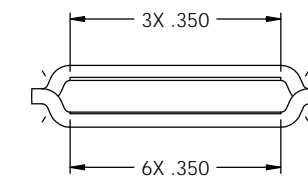
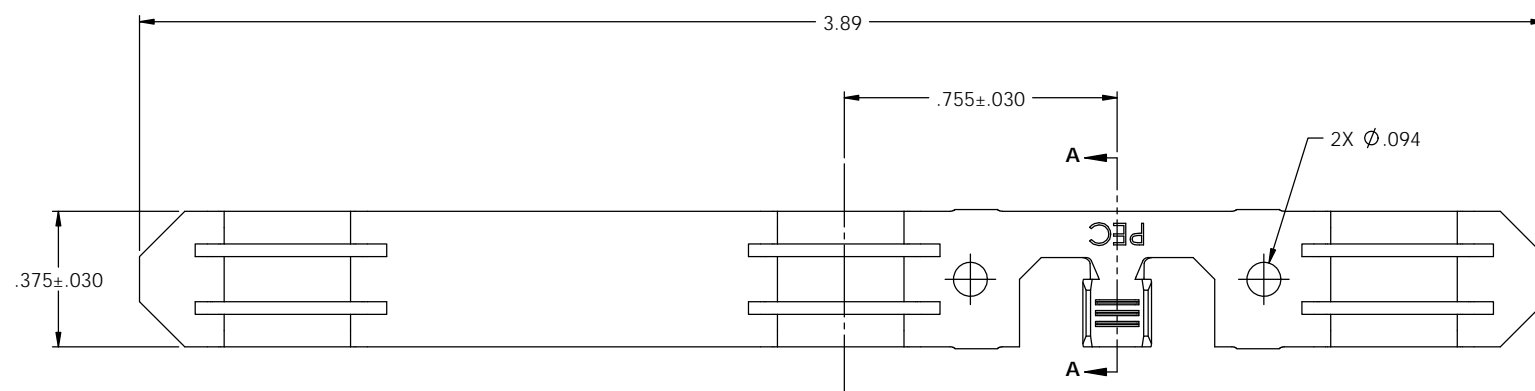
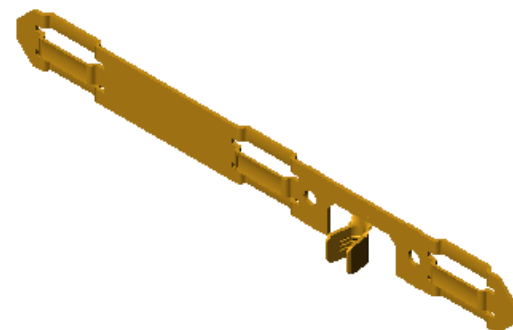


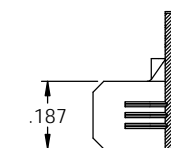
- NOTE:
 1.) MAT'L: .025 THK, C26000 BRASS, 3/4 HARD,
 PER ETCO METAL CODE 00561.
 2.) PARTS MAY BE COATED WITH A LIGHT FILM OF
 LUBRICATION USED IN THE MANUFACTURING
 PROCESS.
 3.) WIRE RANGE: 14-10 AWG.

P/C	DESCRIPTION (3)	MAT'L
14162	BRC-1-D-HB	NOTE 1

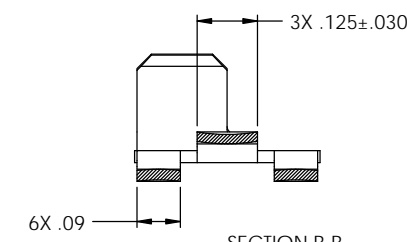
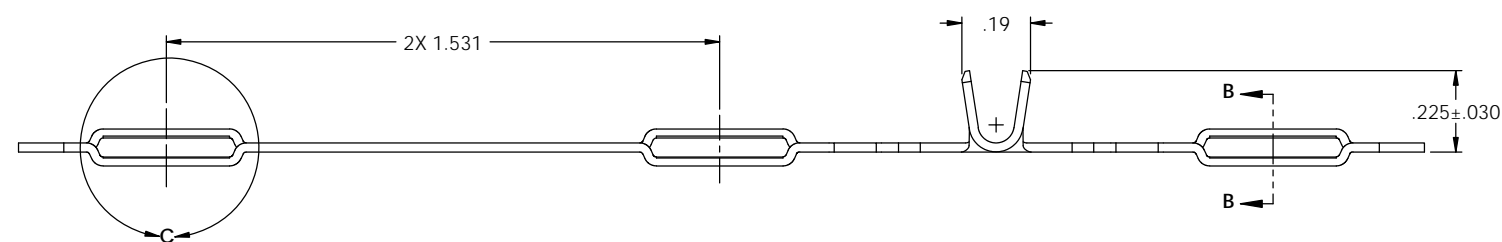
Rev.	Description of Change/ SCN#	Date
1	TRANSFER FROM CP TO EP	1-3-04
2	SCN# 140295 SCJ	11-8-07
3	ECR# 816 SCJ	11-3-11



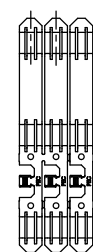
DETAIL C
SCALE 5 : 1



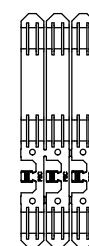
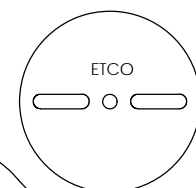
SECTION A-A
SCALE 3 : 1



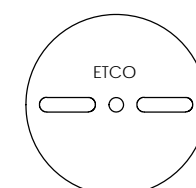
SECTION B-B
SCALE 4 : 1



DIRECTION EXITING TOOL
EARS UP, TO THE LEFT



DIRECTION TOWARDS APPLICATOR
EARS UP, TO THE LEFT



UNCONTROLLED COPY

 THIRD ANGLE PROJECTION	TOOL NO. 0824	Title: BLADE RECEPTACLE CONTACT	
	TOLERANCES UNLESS OTHERWISE SPECIFIED INCHES: XX - ±.030 XXX - ±.015 ANGLES: ±5°	ETCO Incorporated Engineered Products 25 Bellows Street Warwick, RI 02888 Phone: (401) 467-2400 Fax: (401) 467-9230 www.ETCO.com	DO NOT SCALE DWG. Drawn By: S. JOHNSON Chk'd/App'd By:
		Dwg. No.: BRC-1 cust	