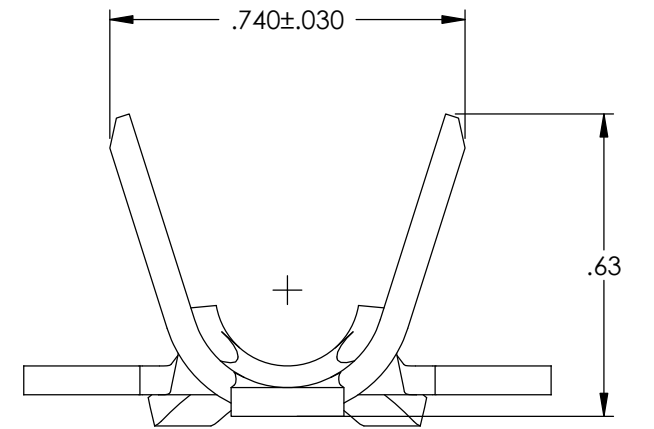
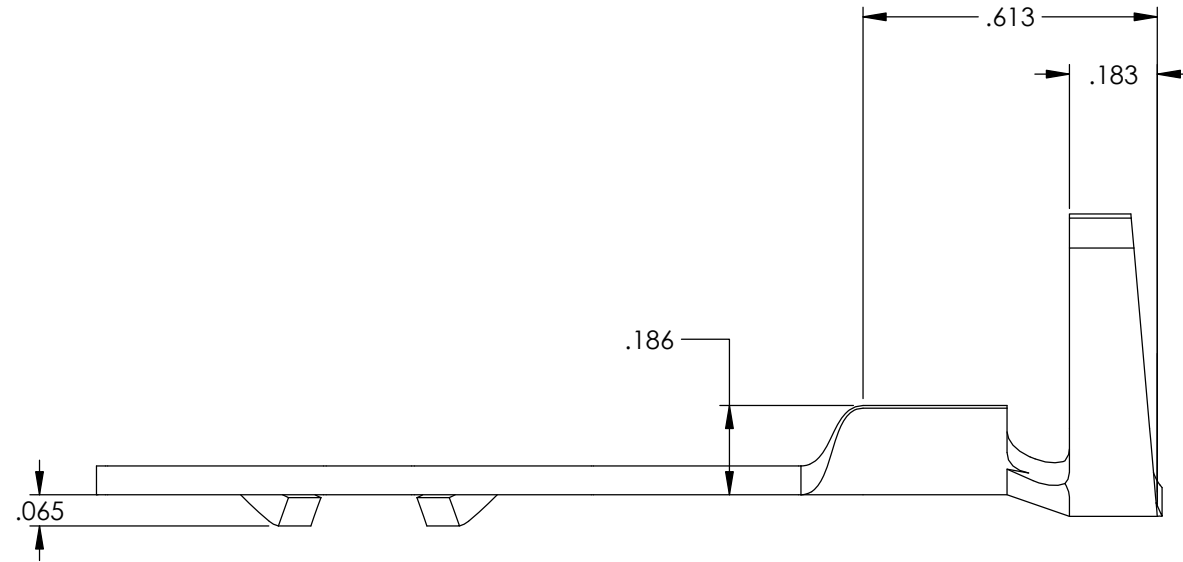
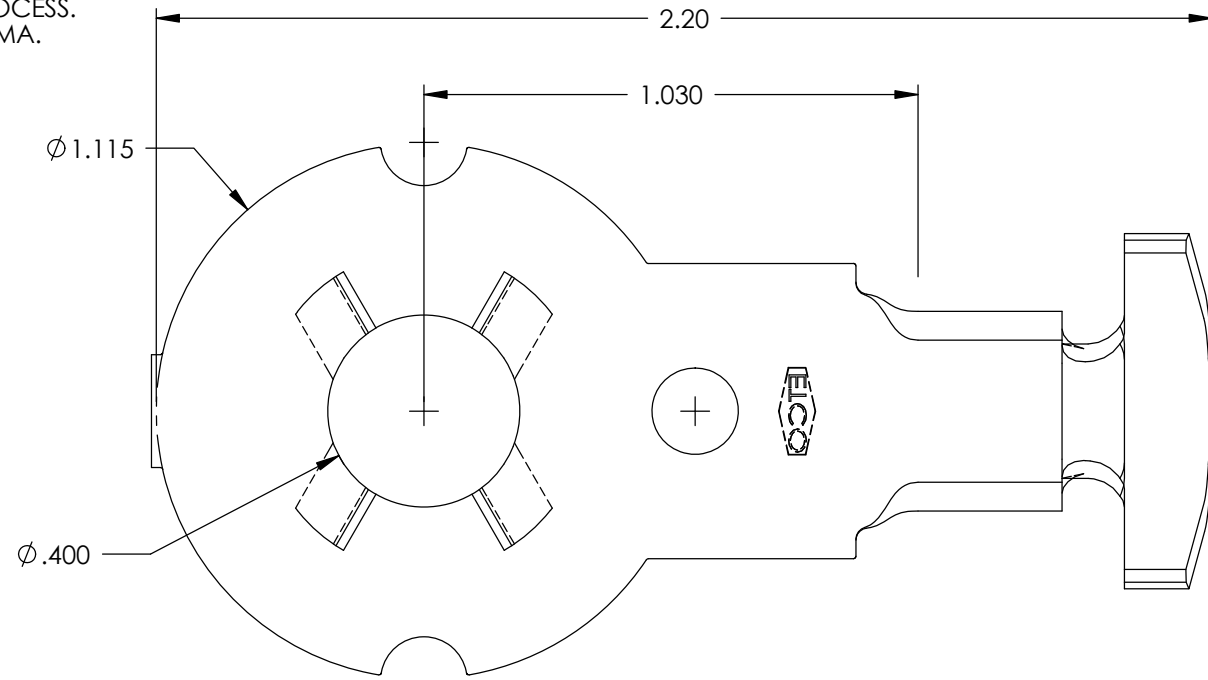
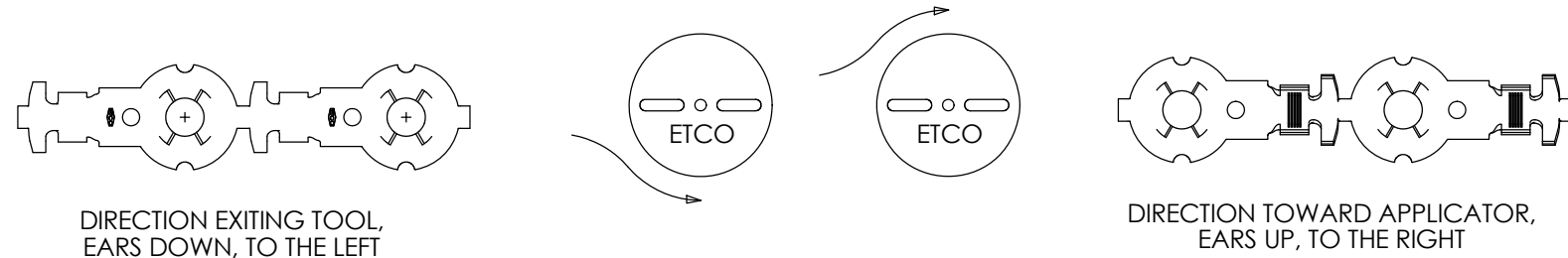


- NOTE:
 1.) MAT'L: .060 THK, BRASS,
 #2 TEMPER (HALF HARD), ANNEALED TO TEMPER,
 PER ETCO METAL CODE NO. 07033.
 2.) PARTS MAY BE COATED WITH A
 LIGHT FILM OF LUBRICATION USED
 IN THE MANUFACTURING PROCESS.
 3.) WIRE RANGE: 25577-65583 CMA.
 4.) INSUL RANGE: ϕ .372-.453



P/C	DESCRIPTION	MAT'L
22059	BT204E-HB	NOTE 1

Rev.	Description of Change/ SCN#	Date
-	-	-



THIS PRINT IS THE PROPERTY OF ETCO INCORPORATED. NO PART OF THIS DESIGN MAY BE USED IN ANY WAY WITHOUT WRITTEN CONSENT FROM ETCO INCORPORATED.

UNCONTROLLED COPY

<p>THIRD ANGLE PROJECTION TOLERANCES UNLESS OTHERWISE SPECIFIED INCHES: .XX - ±.030 .XXX - ±.015 ANGLES: ±5°</p>	TOOL NO. 0842	Title: BATTERY TERMINAL	
		DO NOT SCALE DWG. Drawn By: SMK Date: 10-3-23	Chk'd/App'd By: Scale: 5:2 Size B
		Dwg. No.: BT204E	
		ETCO Incorporated Engineered Products 25 Bellows Street Warwick, RI 02888 Phone: (401) 467-2400 Fax: (401) 467-9230 www.ETCO.com	