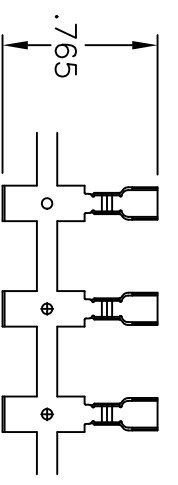
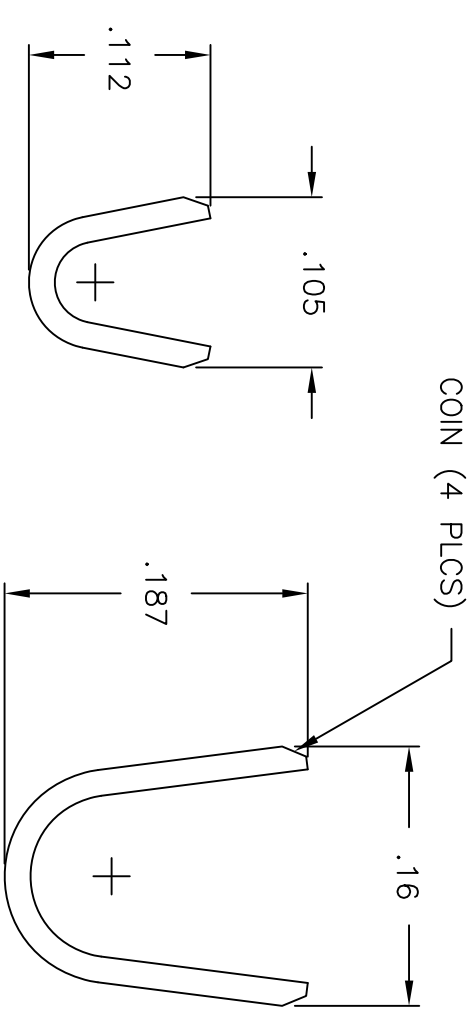
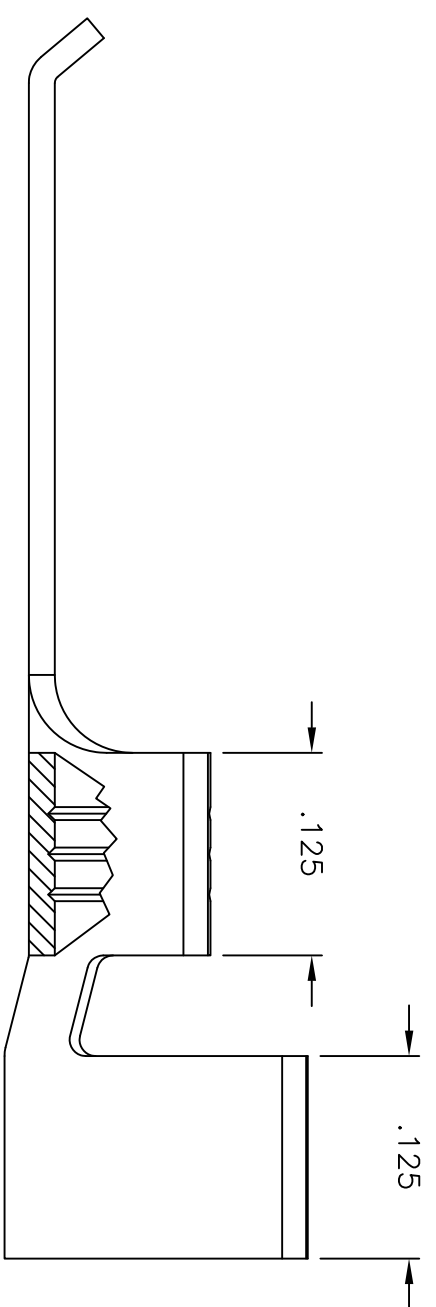
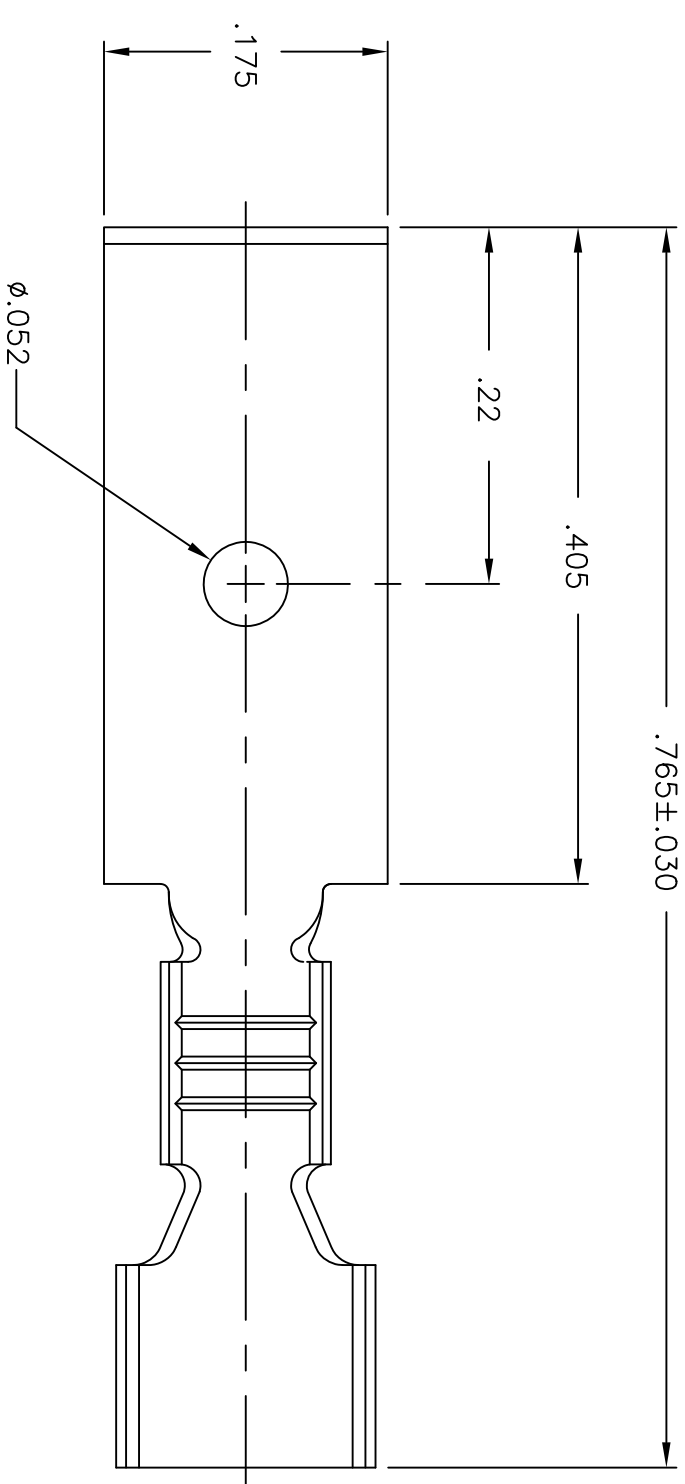
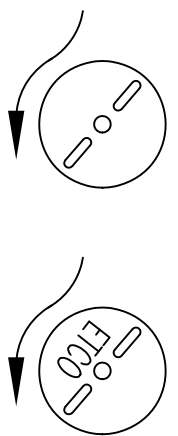


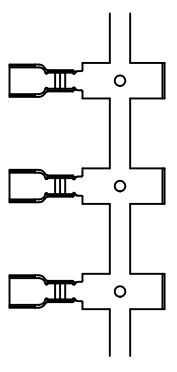
- NOTE:
- 1.) MAT'L: .016 THK, BRASS, #2 TEMPER
(HALF HARD), PER ETCO METAL CODE
NO. 00141.
 - 2.) WIRE RANGE: 22-18 AWG.
 - 3.) INSUL RANGE: ϕ .060- ϕ .110.



DIRECTION EXITING TOOL,
EARS UP, TO THE BACK



FULL VIEW
REFERENCE ONLY



DIRECTION TOWARD APPLICATOR,
EARS UP, TO THE FRONT

P/C	DESCRIPTION
09701	C551L-HB

Rev.	Description of Change/ SCN#	Date
-	INITIAL RELEASE SCJ	3/22/12

CONTACT		Title:	
THIRD ANGLE PROJECTION		TOOL NO. 0311	
TOLERANCES UNLESS OTHERWISE SPECIFIED		DO NOT SCALE DWG.	
.XX - ±.030 .XXX - ±.015 Angles - ±5°		ETCO Incorporated Engineered Products Division 25 Bellows Street Warwick, R.I. 02888 Phone: (401)467-2400 FAX: (401)467-9230	
Drawn By: S. JOHNSON		Date: 3/22/12	
Chk'd/App'd By:		Scale: 8:1	
Dwg. No.:		Size B	
		C551L	

THIS PRINT IS THE PROPERTY OF ETCO INCORPORATED. NO PART OF THIS DESIGN MAY BE USED IN ANY WAY WITHOUT WRITTEN CONSENT FROM ETCO INCORPORATED.