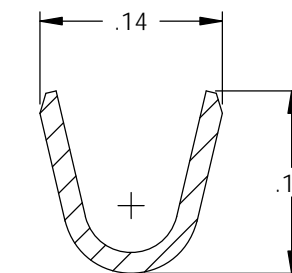
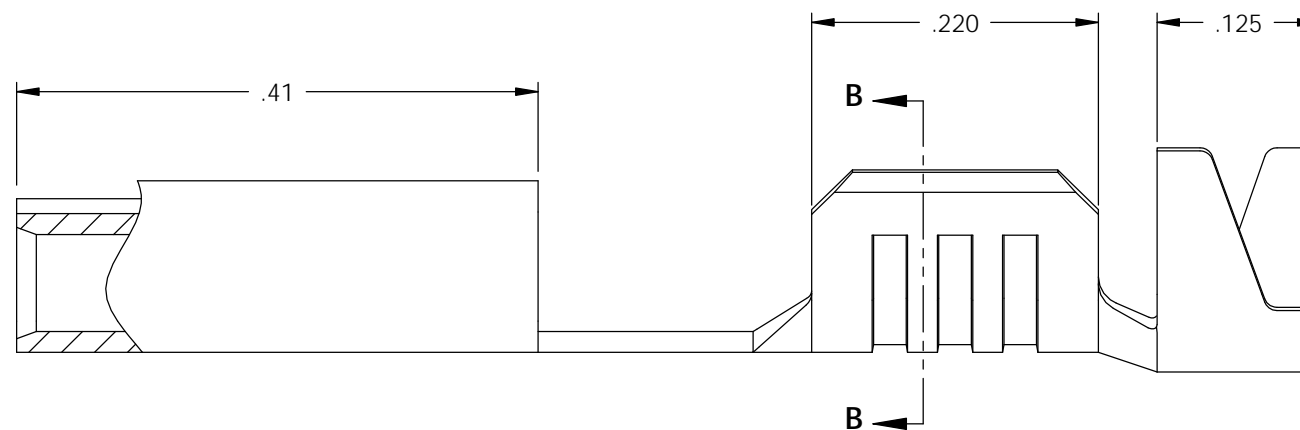
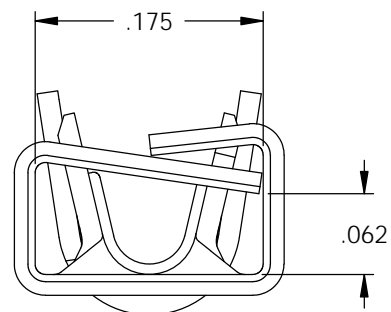
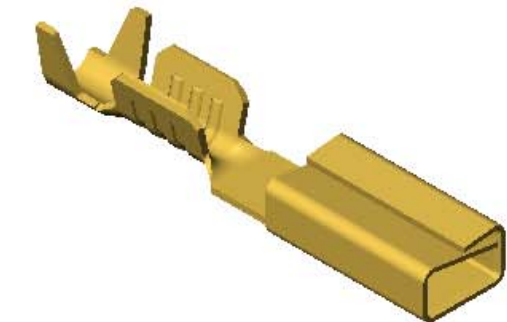
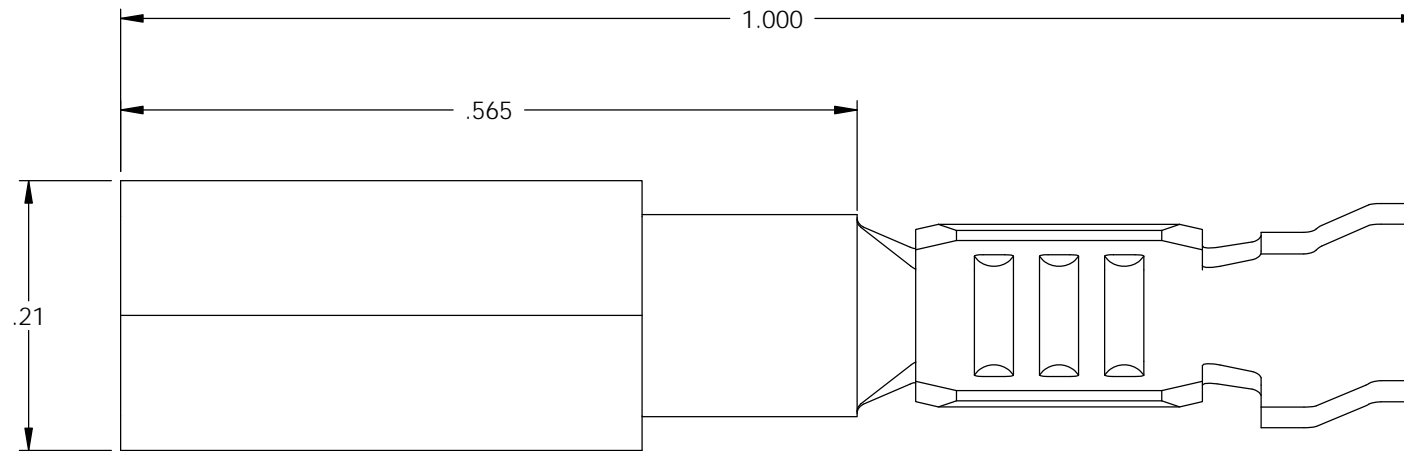


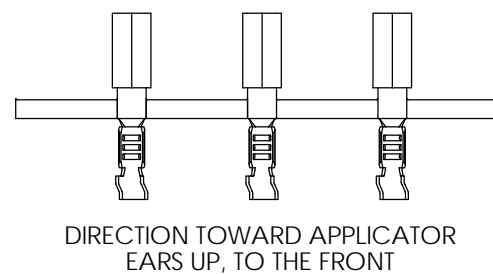
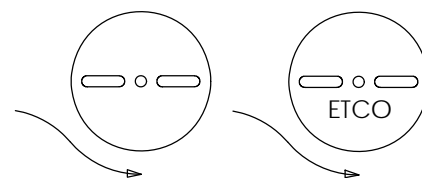
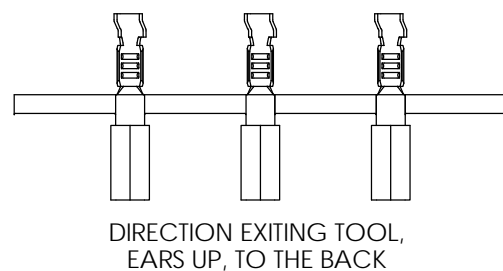
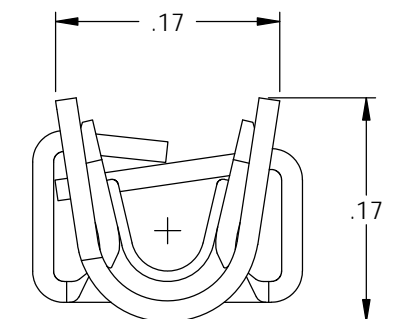
- NOTE:
 1.) MAT'L: .016 THK., BRASS,
 #2 TEMPER (HALF HARD), ANNEALED TO TEMPER,
 PER ETCO METAL CODE NO. 00187.
 2.) TO MATE WITH A IEC-C14 PIN.
 3.) RECEPTACLE RETENTION FORCES ARE INDICATED
 ON THE QUALITY INSPECTION PLAN.
 4.) WIRE RANGE: 14-18 AWG.
 5.) INSUL RANGE: \varnothing .080-.120

| P/C | DESCRIPTION (2) | MAT'L |
|-------|-----------------|--------|
| 14380 | CF065-2-C-HB | NOTE 1 |

| Rev. | Description of Change/ SCN# | Date |
|------|-----------------------------|---------|
| 1 | TRANSFERED FROM CP SCJ | 8-5-08 |
| 2 | ECR# 816 SCJ | 11-7-11 |



SECTION B-B
SCALE 7 : 1



THIS PRINT IS THE PROPERTY OF ETCO INCORPORATED. NO PART OF THIS DESIGN MAY BE USED IN ANY WAY WITHOUT WRITTEN CONSENT FROM ETCO INCORPORATED.

UNCONTROLLED COPY

| | | | | |
|---|---------------------------------|--------------------------------------|----------------------------|---------------------|
| <p>THIRD ANGLE PROJECTION TOLERANCES UNLESS OTHERWISE SPECIFIED INCHES: .XX - \pm.030 .XXX - \pm.015 ANGLES: \pm5°</p> | <p>TOOL NO. 0809</p> | <p>Title: RECEPTACLE</p> | | |
| | | <p>DO NOT SCALE DWG.</p> | <p>Drawn By: S.JOHNSON</p> | <p>Date: 8-5-08</p> |
| <p>ETCO Incorporated Engineered Products 25 Bellows Street Warwick, RI 02888 Phone: (401) 467-2400 Fax: (401) 467-9230 www.ETCO.com</p> | | <p>Chk'd/App'd By:</p> | <p>Scale: 7X</p> | <p>Size B</p> |
| | | <p>Dwg. No.: CF065-2 cust</p> | | |