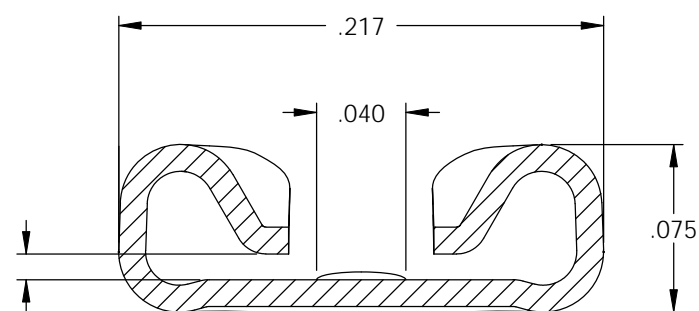
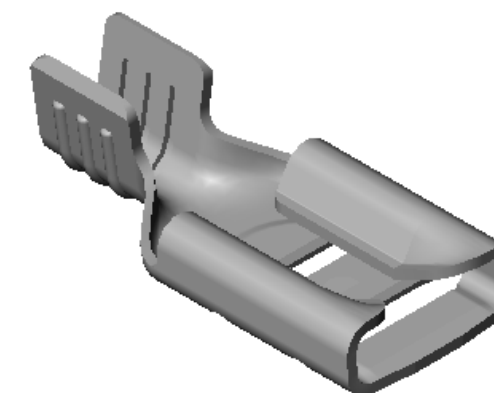
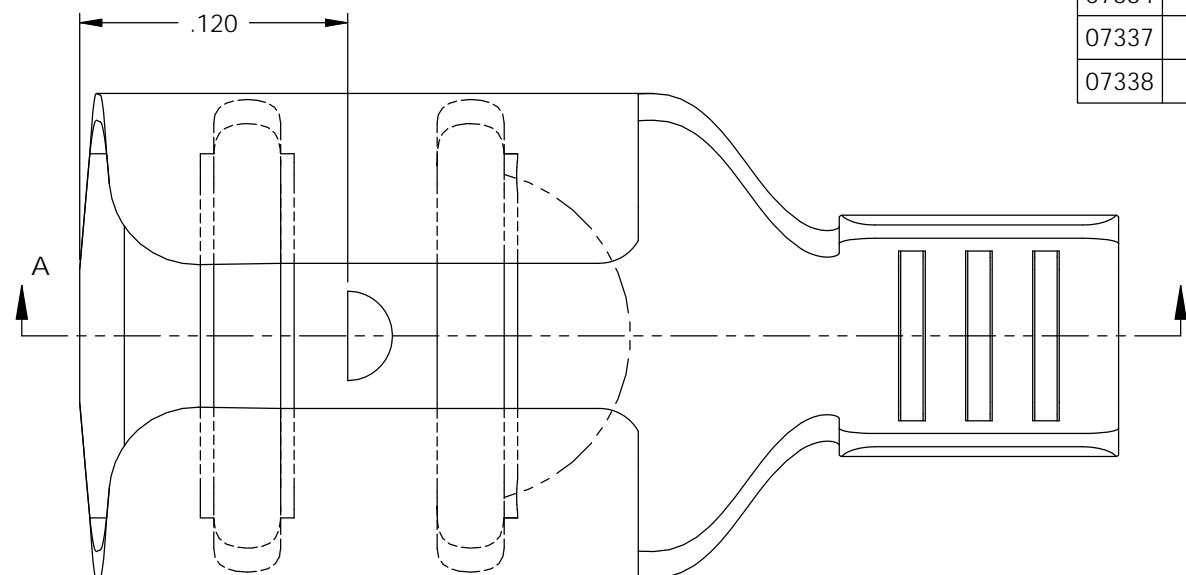


NOTES:

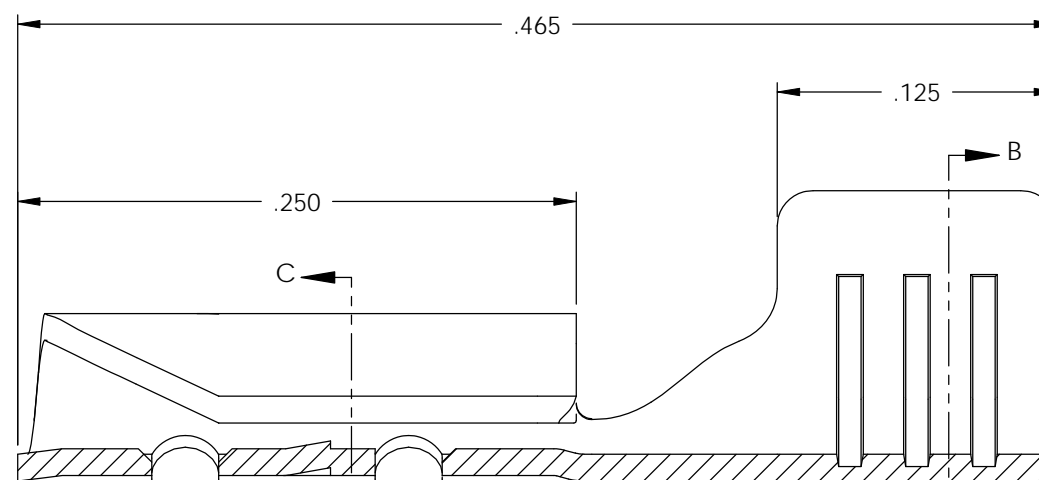
- MATERIAL: .012 THICK, BRASS, #4 TEMPER (FULL HARD), PER ETCO METAL CODE 00051.
- MATERIAL: .012 THICK, PRE-TINNED BRASS, #4 TEMPER (FULL HARD), PER ETCO METAL CODE 01033.
- MATERIAL: .012 THICK, NICKEL PLATED STEEL, #2 TEMPER (1/2 HARD), PER ETCO METAL CODE 03073.
- PARTS MAY BE COATED WITH A LIGHT FILM OF LUBRICATION USED IN THE MANUFACTURING PROCESS.
- INSERTION/WITHDRAWAL FORCES ARE INDICATED ON THE QUALITY INSPECTION PLAN.
- ACCEPTS .020 X .187 NEMA STANDARD MALE.
- WIRE RANGE: 20-16 AWG.

P/C	DESCRIPTION	MAT'L
07334	D150E-NPS	NOTE 3
07337	D150E-THB	NOTE 2
07338	D150E-HB	NOTE 1

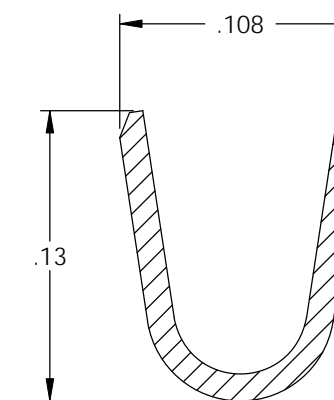
Rev.	Description of Change/ SCN#	Date
2	REDRAWN ON SOLIDWORKS UPDATED SCJ ORG.ENG.DWG.DATE: 11-17-89	1-23-08



SECTION C-C  
SCALE 12 : 1

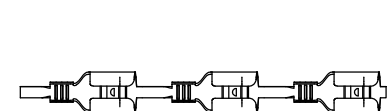


SECTION A-A  
SCALE 12 : 1

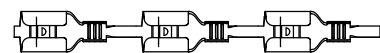
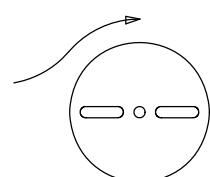


SECTION B-B  
SCALE 12 : 1

# UNCONTROLLED COPY



DIRECTION EXITING TOOL,  
EARS UP, TO THE LEFT



DIRECTION TOWARD APPLICATOR,  
EARS UP, TO THE RIGHT

THIS PRINT IS THE PROPERTY OF ETCO INCORPORATED. NO PART OF THIS DESIGN MAY BE USED IN ANY WAY WITHOUT WRITTEN CONSENT FROM ETCO INCORPORATED.

THIRD ANGLE PROJECTION  
TOLERANCES UNLESS OTHERWISE SPECIFIED

INCHES: .XX - ±.030  
.XXX - ±.015  
ANGLES: ±5°

TOOL NO.  
**0103**



Title: .020 X .187 FEMALE DISCONNECT

DO NOT SCALE DWG.

Drawn By: S.JOHNSON

Date: 1-23-08

Chk'd/App'd By:

Scale:  
12X

Size  
B

Dwg. No.:

D150E cust

ETCO Incorporated  
Engineered Products  
25 Bellows Street  
Warwick, RI 02888  
Phone: (401) 467-2400  
Fax: (401) 467-9230  
www.ETCO.com