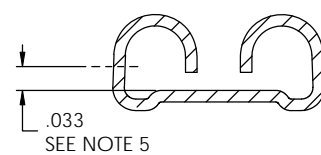
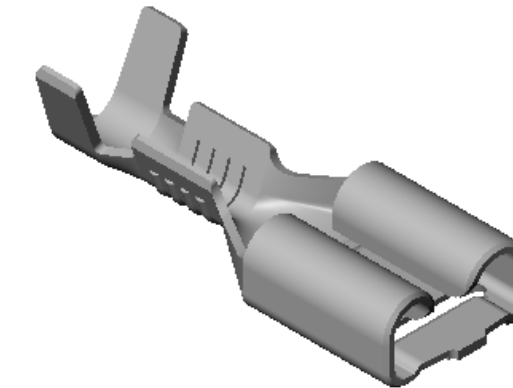
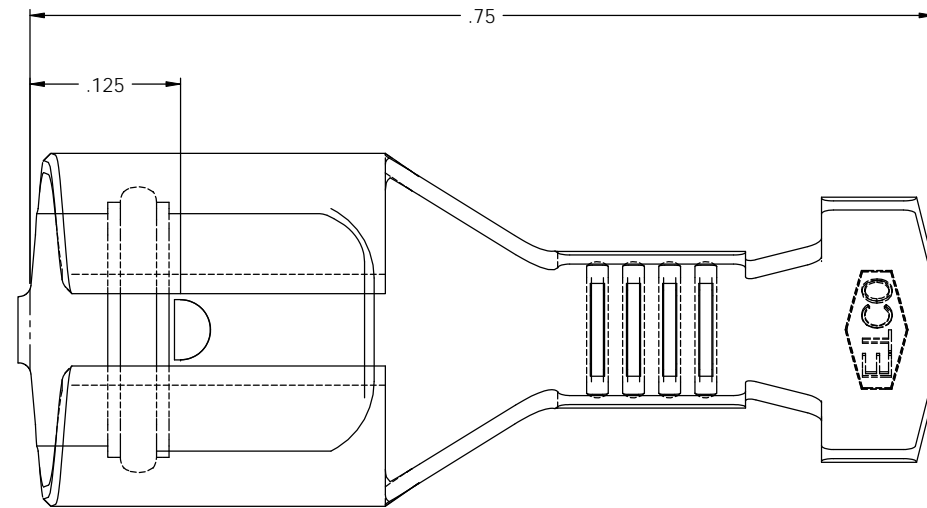


NOTE:

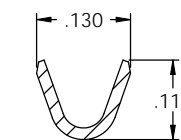
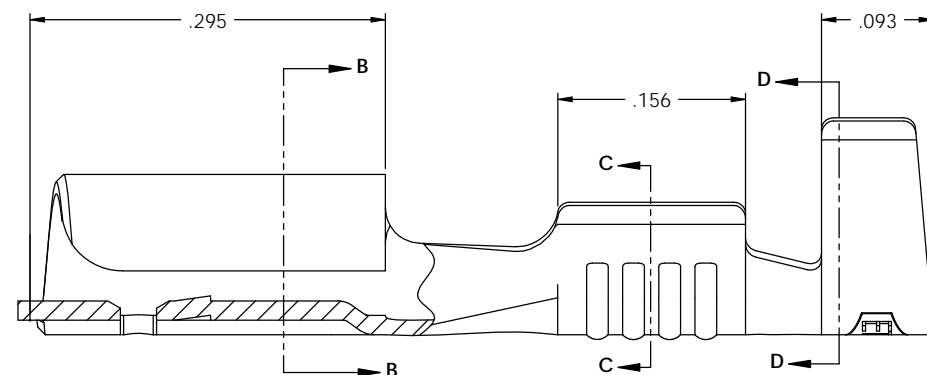
- 1.) MAT'L: .016 THK., BRASS,
#4 TEMPER (FULL HARD),
PER ETCO METAL CODE NO. 05055.
- 2.) MAT'L: .016 THK., PRE-TINNED BRASS,
#4 TEMPER (FULL HARD),
PER ETCO METAL CODE NO. 05255.
- 3.) PARTS MAY BE COATED WITH A LIGHT FILM OF
LUBRICATION USED IN THE MANUFACTURING PROCESS.
- 4.) INSERTION/WITHDRAWAL FORCES ARE INDICATED
ON THE QUALITY INSPECTION RECORD.
- 5.) ACCEPTS .032 X .250 STANDARD NEMA MALE.
- 6.) WIRE RANGE: 22-18 AWG.
- 7.) INSUL RANGE: Ø .090-.130

P/C	DESCRIPTION	MAT'L	UL	SP
07581	D265E-N-THB	NOTE 2	X	X
07615	D265E-N-HB	NOTE 1	X	X

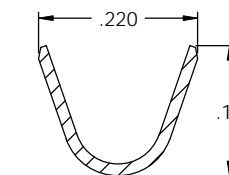
Rev.	Description of Change/ SCN#	Date
1	REDRAWN ON SOLIDWORKS NO CHANGES SCJ ORG.ENG.DWG.DATE: 6-26-91	11-9-04
2	SCN# 102890 SCJ	3-14-05



SECTION B-B
SCALE 10 : 1



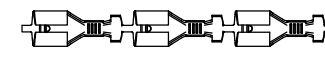
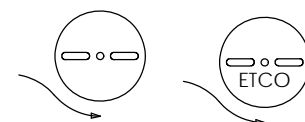
SECTION C-C
SCALE 10 : 1



SECTION D-D
SCALE 10 : 1



DIRECTION EXITING TOOL,
EARS UP, TO THE LEFT



DIRECTION TOWARD APPLICATOR,
EARS UP, TO THE RIGHT

UNCONTROLLED COPY

 THIRD ANGLE PROJECTION	TOOL NO.	Title: .032 X .250 FEMALE DISCONNECT	
	0628	DO NOT SCALE DWG.	Date: 11-9-04
TOLERANCES UNLESS OTHERWISE SPECIFIED INCHES: XX - ±.030 XXX - ±.015 ANGLES: ±5°	 ETCO	ETCO Incorporated Engineered Products 25 Bellows Street Warwick, RI 02888 Phone: (401) 467-2400 Fax: (401) 467-9230 www.ETCO.com	Drawn By: S. Johnson Chk'd/App'd By: Scale: 10X Size: C
		Dwg. No.: D265E-N cust	