
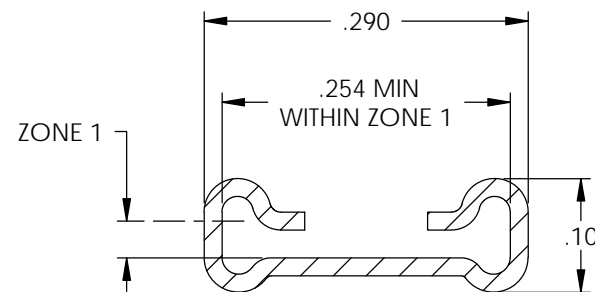
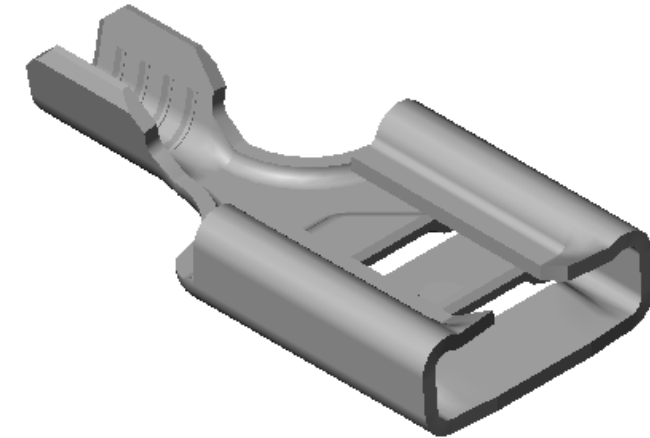
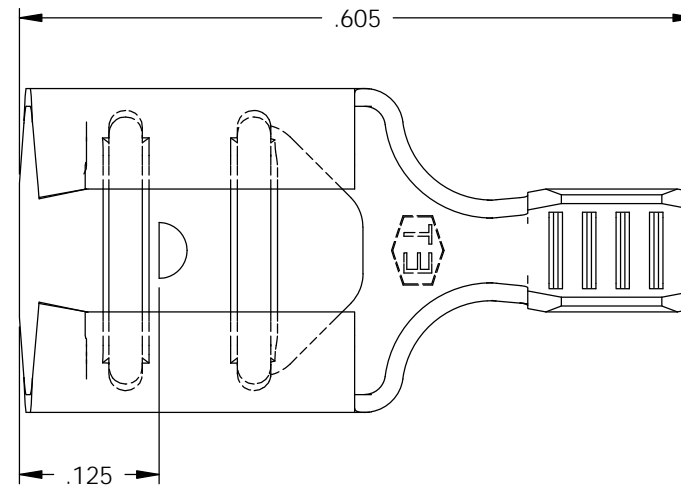


NOTE:

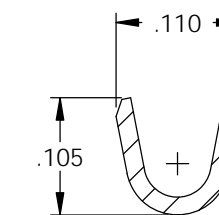
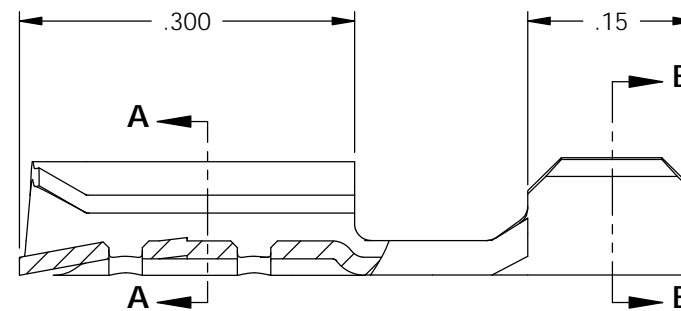
- 1.) MAT'L: .016 THK., BRASS, #4 TEMPER (FULL HARD), PER ETCO METAL CODE NO. 05036.
- 2.) MAT'L: .016 THK., PRE-TINNED BRASS, #4 TEMPER (FULL HARD), PER ETCO METAL CODE NO. 05236.
- 3.) MAT'L: .016 THK., PRE-NICKEL PLATED STEEL, #2 TEMPER (HALF HARD), PER ETCO METAL CODE NO. 03130.
- 4.) PARTS MAY BE COATED WITH A LIGHT FILM OF LUBRICATION USED IN THE MANUFACTURING PROCESS.
- 5.) INSERTION/WITHDRAWAL FORCES ARE INDICATED ON THE QUALITY INSPECTION RECORD.
- 6.) MATING PART: .032 X .250 NEMA STANDARD MALE.
- 7.) WIRE RANGE: 18-22 AWG.

P/C	DESCRIPTION	MAT'L	
07665	D275-HB	NOTE 1	X
07666	D275-THB	NOTE 2	X
07667	D275-NPS	NOTE 3	

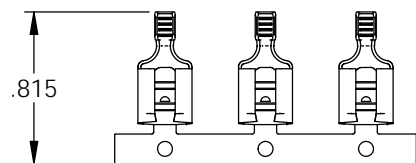
Rev.	Description of Change/ SCN#	Date
1	REDRAWN ON SOLIDWORKS NO CHANGES SCJ ORG.ENG.DWG.DATE: 10-1-91	2-3-06
2	COMPLETED P/C LIST SCJ	7-24-08
3	ECR# 1293 SCJ	6/13/12



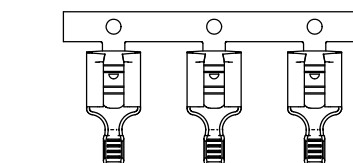
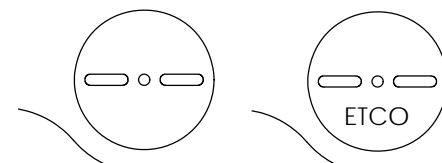
SECTION A-A
SCALE 6 : 1



SECTION B-B
SCALE 6 : 1





DIRECTION EXITING TOOL,
EARS UP, TO THE BACK



DIRECTION TOWARD APPLICATOR,
EARS UP, TO THE FRONT

THIS PRINT IS THE PROPERTY OF ETCO INCORPORATED. NO PART OF THIS DESIGN MAY BE USED IN ANY WAY WITHOUT WRITTEN CONSENT FROM ETCO INCORPORATED.

UNCONTROLLED COPY

 THIRD ANGLE PROJECTION TOLERANCES UNLESS OTHERWISE SPECIFIED INCHES: .XX - ±.030 .XXX - ±.015 ANGLES: ±5°	TOOL NO. 0579	Title: .032 X .250 FEMALE DISCONNECT	
		DO NOT SCALE DWG. Drawn By: S.JOHNSON Date: 2-3-06	Chk'd/App'd By: Scale: 6X Size: B
		Dwg. No.: D275 cust	

ETCO Incorporated
 Engineered Products
 25 Bellows Street
 Warwick, RI 02888
 Phone: (401) 467-2400
 Fax: (401) 467-9230
 www.ETCO.com