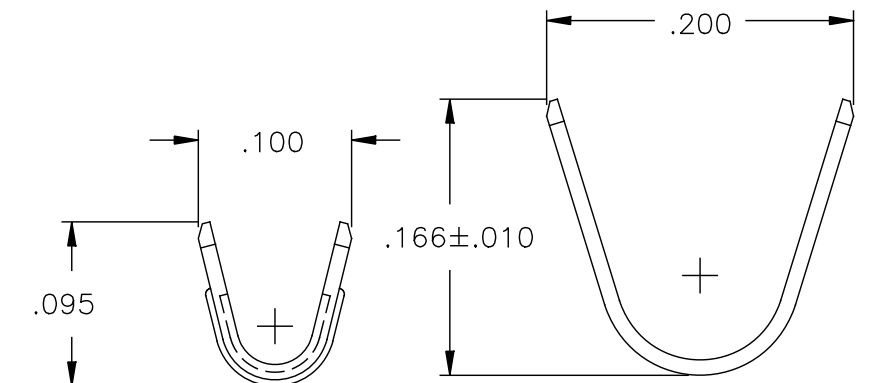
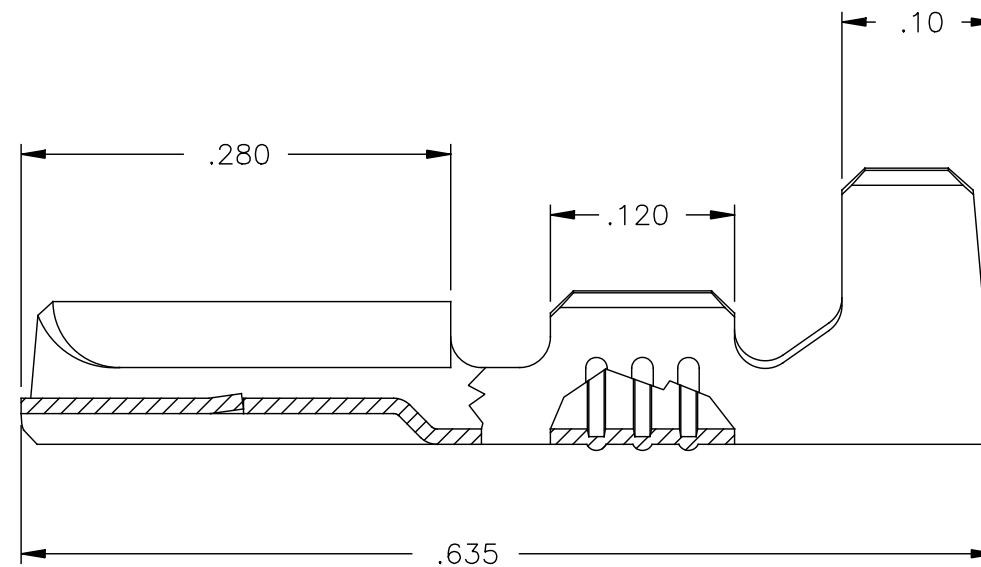
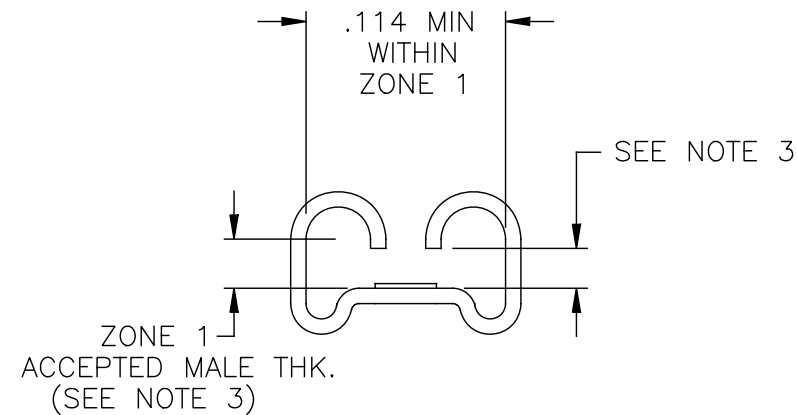
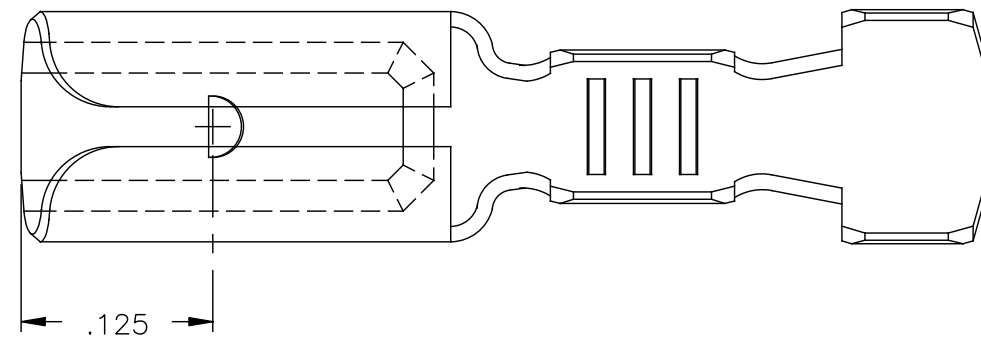


NOTE:

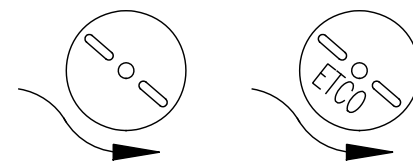
- 1.) MAT'L: .010 THK, BRASS,
#4 TEMPER (FULL HARD),
PER ETCO METAL CODE NO. 00074.
- 2.) PARTS MAY BE COATED WITH A LIGHT
FILM OF LUBRICATION USED IN THE
MANUFACTURING PROCESS.
- 3.) TO ACCEPT .032 X .110 NEMA STANDARD MALE.
- 4.) USING ACCEPTED MALE, MAXIMUM 1ST ON
INSERTION FORCE IS 13 LBS., MINIMUM
1ST OFF WITHDRAWAL FORCE IS 13 LBS.
PART IS DESIGNED FOR ONE ASSEMBLY.
- 5.) WIRE RANGE: 22-18 AWG.
- 6.) INSUL RANGE: ϕ .060-.115

| P/C | DESCRIPTION |
|-------|-------------|
| 07269 | D60EL-HB |

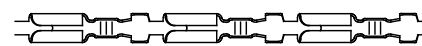
| Rev. | Description of Change/ | SCN# | Date |
|------|------------------------|------|---------|
| 1 | ECR# 2422 | SCJ | 8/06/13 |
| 1 | ECR# 5146 | SCJ | 6/21/18 |



DIRECTION EXITING TOOL,
EAR UP, TO THE LEFT



FULL VIEW
REFERENCE ONLY



DIRECTION TOWARD APPLICATOR,
EARS UP, TO THE RIGHT

UNCONTROLLED COPY

| | | | | |
|--|--------------------------|---------------------------------|-----------------------------------|---------------------------|
| <p>THIRD ANGLE PROJECTION</p> <p>TOLERANCES UNLESS OTHERWISE SPECIFIED</p> <p>.XX - ±.030 .XXX - ±.015 Angles - ±5°</p> | <p>TOOL NO. 0013</p> | <p>Title: FEMALE DISCONNECT</p> | | |
| | | <p>DO NOT SCALE DWG.</p> | <p>Drawn By: P. McCormick</p> | <p>Date: 11-19-96</p> |
| <p>ETCO Incorporated Engineered Products 25 Bellows Street Warwick, R.I. 02888 Phone: (401)467-2400 FAX: (401)467-9230</p> | | <p>Checked:</p> | <p>Scale: 8:1</p> | <p>Size B</p> |
| <p>Dwg. No.: C- D60EL</p> | | | | |

THIS PRINT IS THE PROPERTY OF ETCO INCORPORATED. NO PART OF THIS DESIGN MAY BE USED IN ANY WAY WITHOUT WRITTEN CONSENT FROM ETCO INCORPORATED.

CUSTOMER DRAWING